

Product Datasheet

ILF1 Antibody NB100-88148

Unit Size: 0.1 ml

Store at 4C. Do not freeze.

www.novusbio.com



technical@novusbio.com

Protocols, Publications, Related Products, Reviews, Research Tools and Images at:
www.novusbio.com/NB100-88148

Updated 9/9/2025 v.20.1

Earn rewards for product
reviews and publications.

Submit a publication at www.novusbio.com/publications

Submit a review at www.novusbio.com/reviews/destination/NB100-88148



NB100-88148

ILF1 Antibody

Product Information	
Unit Size	0.1 ml
Concentration	0.2 mg/ml
Storage	Store at 4C. Do not freeze.
Clonality	Polyclonal
Preservative	0.09% Sodium Azide
Isotype	IgG
Purity	Immunogen affinity purified
Buffer	TBS and 0.1% BSA

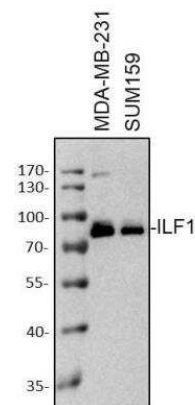
Product Description	
Description	Novus Biologicals Rabbit ILF1 Antibody (NB100-88148) is a polyclonal antibody validated for use in IHC, WB and IP. All Novus Biologicals antibodies are covered by our 100% guarantee.
Host	Rabbit
Gene ID	3607
Gene Symbol	FOXK2
Species	Human
Immunogen	The immunogen recognized by this antibody maps to a region between residue 635 and 660 of human forkhead box K2 using the numbering given in entry NP_004505.2 (GeneID 3607).

Product Application Details	
Applications	Western Blot, Immunohistochemistry-Paraffin, Immunohistochemistry, Immunoprecipitation
Recommended Dilutions	Western Blot 1:100-1:2000, Immunohistochemistry 1:200 - 1:1000, Immunoprecipitation 2 - 5 ug/mg lysate, Immunohistochemistry-Paraffin 1:200 - 1:1000
Application Notes	Epitope retrieval with citrate buffer pH6.0 is recommended for FFPE tissue sections.

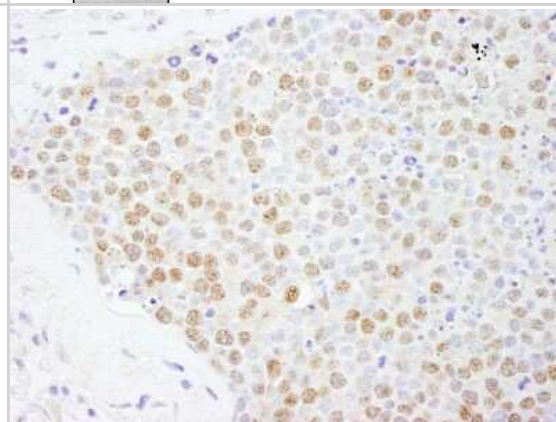


Images

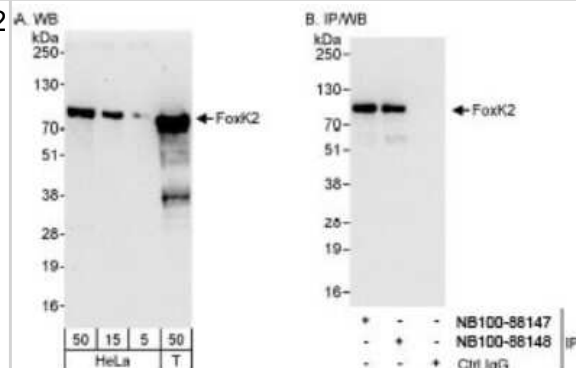
Western Blot: ILF1 Antibody [NB100-88148] - Western Blot: whole cell lysates from MDA-MB-231 and SUM159 cells were loaded with 50 ug/lane. 10% SDS-PAGE. ILF1 antibody (NB100-88148) was used for primary antibody: 1:2000, 4C, overnight. Image from verified customer review.



Immunohistochemistry-Paraffin: ILF1 Antibody [NB100-88148] - Human small cell lung cancer. Antibody used at a dilution of 1:200 (1ug/ml).



Western Blot: ILF1 Antibody [NB100-88148] - Detection of Human FoxK2 on HeLa whole cell lysate using NB100-88148. FoxK2 was also immunoprecipitated by rabbit anti-FoxK2 antibody NB100-88147.





Novus Biologicals USA

10730 E. Briarwood Avenue
Centennial, CO 80112
USA
Phone: 303.730.1950
Toll Free: 1.888.506.6887
Fax: 303.730.1966
nb-customerservice@bio-techne.com

Bio-Techne Canada

21 Canmotor Ave
Toronto, ON M8Z 4E6
Canada
Phone: 905.827.6400
Toll Free: 855.668.8722
Fax: 905.827.6402
canada.inquires@bio-techne.com

Bio-Techne Ltd

19 Barton Lane
Abingdon Science Park
Abingdon, OX14 3NB, United Kingdom
Phone: (44) (0) 1235 529449
Free Phone: 0800 37 34 15
Fax: (44) (0) 1235 533420
info.EMEA@bio-techne.com

General Contact Information

www.novusbio.com
Technical Support: nb-technical@bio-techne.com
Orders: nb-customerservice@bio-techne.com
General: novus@novusbio.com

Products Related to NB100-88148

NBP2-33376H	Blue Marker Antibody (6F4-F6) [HRP]
HAF008	Goat anti-Rabbit IgG Secondary Antibody [HRP]
NB7160	Goat anti-Rabbit IgG (H+L) Secondary Antibody [HRP]
NBP2-24891	Rabbit IgG Isotype Control

Limitations

This product is for research use only and is not approved for use in humans or in clinical diagnosis. Primary Antibodies are guaranteed for 1 year from date of receipt.

For more information on our 100% guarantee, please visit www.novusbio.com/guarantee

Earn gift cards/discounts by submitting a review: www.novusbio.com/reviews/submit/NB100-88148

Earn gift cards/discounts by submitting a publication using this product:
www.novusbio.com/publications

