

Product Datasheet

ERF Antibody - BSA Free NB100-88120

Unit Size: 100 ul

Store at 4C. Do not freeze.

www.novusbio.com



technical@novusbio.com

Protocols, Publications, Related Products, Reviews, Research Tools and Images at:
www.novusbio.com/NB100-88120

Updated 9/9/2025 v.20.1

Earn rewards for product
reviews and publications.

Submit a publication at www.novusbio.com/publications

Submit a review at www.novusbio.com/reviews/destination/NB100-88120



NB100-88120

ERF Antibody - BSA Free

Product Information	
Unit Size	100 ul
Concentration	1.0 mg/ml
Storage	Store at 4C. Do not freeze.
Clonality	Polyclonal
Preservative	0.09% Sodium Azide
Isotype	IgG
Purity	Immunogen affinity purified
Buffer	Tris-Citrate/Phosphate (pH 7.0 - 8.0)

Product Description	
Description	Novus Biologicals Rabbit ERF Antibody - BSA Free (NB100-88120) is a polyclonal antibody validated for use in IHC and IP. All Novus Biologicals antibodies are covered by our 100% guarantee.
Host	Rabbit
Gene ID	2077
Gene Symbol	ERF
Species	Human, Mouse
Immunogen	The immunogen recognized by this antibody maps to a region between residue 498 and 548 of human Ets2 repressor factor using the numbering given in entry NP_006485.2 (GeneID 2077).

Product Application Details	
Applications	Immunohistochemistry-Paraffin, Immunohistochemistry, Immunoprecipitation, Western Blot (Negative)
Recommended Dilutions	Immunohistochemistry 1:1000 - 1:5000, Immunoprecipitation 2 - 5 ug/mg lysate, Immunohistochemistry-Paraffin 1:1000 - 1:5000, Western Blot (Negative)
Application Notes	<p>Immunohistochemistry-Paraffin: Epitope retrieval with citrate buffer pH 6.0 is recommended for FFPE tissue sections.</p> <p>Western Blot: This antibody has not performed satisfactorily when used for western blot of ERF in crude preparations (e.g. whole cell lysate). This antibody can be used for western blot of enriched (e.g. immunoprecipitated) sources of ERF.</p>

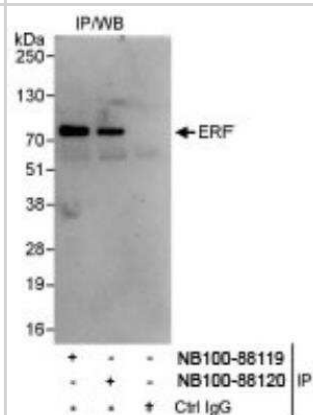


Images

Immunohistochemistry-Paraffin: ERF Antibody [NB100-88120] - FFPE section of human ovarian carcinoma (left) and mouse renal cell carcinoma (right). Antibody: Affinity purified rabbit anti-ERF (NB100-88120). Detection: DAB



Immunoprecipitation: ERF Antibody [NB100-88120] - Whole cell lysate (1 mg for IP, 20% of IP loaded) from HeLa cells. NB100-88120 used for IP at 3 mcg/mg lysate. ERF was also immunoprecipitated by NB100-88119, which recognizes an upstream epitope.





Novus Biologicals USA

10730 E. Briarwood Avenue
Centennial, CO 80112
USA
Phone: 303.730.1950
Toll Free: 1.888.506.6887
Fax: 303.730.1966
nb-customerservice@bio-techne.com

Bio-Techne Canada

21 Canmotor Ave
Toronto, ON M8Z 4E6
Canada
Phone: 905.827.6400
Toll Free: 855.668.8722
Fax: 905.827.6402
canada.inquires@bio-techne.com

Bio-Techne Ltd

19 Barton Lane
Abingdon Science Park
Abingdon, OX14 3NB, United Kingdom
Phone: (44) (0) 1235 529449
Free Phone: 0800 37 34 15
Fax: (44) (0) 1235 533420
info.EMEA@bio-techne.com

General Contact Information

www.novusbio.com
Technical Support: nb-technical@bio-techne.com
Orders: nb-customerservice@bio-techne.com
General: novus@novusbio.com

Products Related to NB100-88120

NBL1-10326	ERF Overexpression Lysate
NBP2-33376H	Blue Marker Antibody (6F4-F6) [HRP]
HAF008	Goat anti-Rabbit IgG Secondary Antibody [HRP]
NB7160	Goat anti-Rabbit IgG (H+L) Secondary Antibody [HRP]
NBP2-24891	Rabbit IgG Isotype Control

Limitations

This product is for research use only and is not approved for use in humans or in clinical diagnosis. Primary Antibodies are guaranteed for 1 year from date of receipt.

For more information on our 100% guarantee, please visit www.novusbio.com/guarantee

Earn gift cards/discounts by submitting a review: www.novusbio.com/reviews/submit/NB100-88120

Earn gift cards/discounts by submitting a publication using this product:
www.novusbio.com/publications

