

Product Datasheet

Cyclin L2 Antibody NB100-87009

Unit Size: 0.1 ml

Store at 4C. Do not freeze.

www.novusbio.com



technical@novusbio.com

Publications: 3

Protocols, Publications, Related Products, Reviews, Research Tools and Images at:
www.novusbio.com/NB100-87009

Updated 9/9/2025 v.20.1

Earn rewards for product
reviews and publications.

Submit a publication at www.novusbio.com/publications

Submit a review at www.novusbio.com/reviews/destination/NB100-87009



NB100-87009

Cyclin L2 Antibody

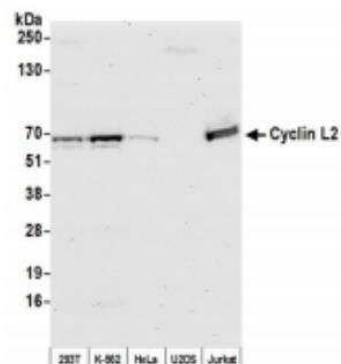
Product Information	
Unit Size	0.1 ml
Concentration	0.2 mg/ml
Storage	Store at 4C. Do not freeze.
Clonality	Polyclonal
Preservative	0.09% Sodium Azide
Isotype	IgG
Purity	Immunogen affinity purified
Buffer	TBS and 0.1% BSA

Product Description	
Description	Novus Biologicals Rabbit Cyclin L2 Antibody (NB100-87009) is a polyclonal antibody validated for use in WB and IP. Anti-Cyclin L2 Antibody: Cited in 3 publications. All Novus Biologicals antibodies are covered by our 100% guarantee.
Host	Rabbit
Gene ID	81669
Gene Symbol	CCNL2
Species	Human
Immunogen	The immunogen recognized by this antibody maps to a region between residue 470 and 520 of human cyclin L2 using the numbering given in entry NP_112199.2 (GeneID 81669).

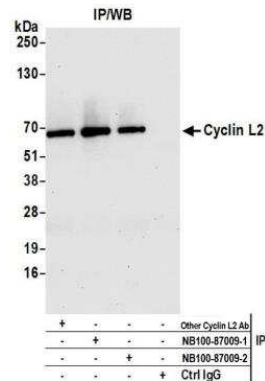
Product Application Details	
Applications	Western Blot, Immunoblotting, Immunoprecipitation, Knockdown Validated
Recommended Dilutions	Western Blot 1:2000-1:10000, Immunoprecipitation 2-10 ug/mg lysate, Immunoblotting, Knockdown Validated
Application Notes	Knockdown validation (PMID: 31852782). Use in immunoblotting reported in scientific literature (PMID:31852782).

Images

Western Blot: Cyclin L2 Antibody [NB100-87009] - Whole cell lysate (50 ug) from HEK293T, K-562, HeLa, U2OS, and Jurkat cells prepared using NETN lysis buffer. Antibody: Affinity purified Rabbit anti-Cyclin L2 antibody used for WB at 0.04 ug/ml. Detection: Chemiluminescence with an exposure time of 30 seconds.



Immunoprecipitation: Cyclin L2 Antibody [NB100-87009] - Detection of human Cyclin L2 by western blot of immunoprecipitates. Samples: Whole cell lysate (1.0 mg per IP reaction; 20% of IP loaded) from Hela cells prepared using NETN lysis buffer. Antibodies: Affinity purified Rabbit anti-Cyclin L2 antibody NB100-87009 (lot 2) used for IP at 6 ug per reaction. Cyclin L2 was also immunoprecipitated by a previous lot of this antibody (lot 1) and rabbit anti-Cyclin L2 antibody from Company B. For blotting immunoprecipitated Cyclin L2, NB100-87009 was used at 0.04 ug/ml. Detection: Chemiluminescence with an exposure time of 10 seconds.



Publications

Parrish PCR, Thomas JD, Gabel AM Et al. Discovery of synthetic lethal and tumor suppressor paralog pairs in the human genome *Cell reports* 2021-08-31 [PMID: 34469736] (WB, Human)

Kisaka JK, Ratner L, Kyei GB The dual specificity kinase DYRK1A modulates the levels of cyclin L2 to control HIV replication in macrophages *J. Virol.* 2019-12-18 [PMID: 31852782] (IP, IB, KD, Human)

Kyei GB, Cheng X, Ramani R, Ratner L. Cyclin L2 Is a Critical HIV Dependency Factor in Macrophages that Controls SAMHD1 Abundance. *Cell Host Microbe.* 2014-12-17 [PMID: 25532805] (WB, Human)



Novus Biologicals USA

10730 E. Briarwood Avenue
Centennial, CO 80112
USA
Phone: 303.730.1950
Toll Free: 1.888.506.6887
Fax: 303.730.1966
nb-customerservice@bio-techne.com

Bio-Techne Canada

21 Canmotor Ave
Toronto, ON M8Z 4E6
Canada
Phone: 905.827.6400
Toll Free: 855.668.8722
Fax: 905.827.6402
canada.inquires@bio-techne.com

Bio-Techne Ltd

19 Barton Lane
Abingdon Science Park
Abingdon, OX14 3NB, United Kingdom
Phone: (44) (0) 1235 529449
Free Phone: 0800 37 34 15
Fax: (44) (0) 1235 533420
info.EMEA@bio-techne.com

General Contact Information

www.novusbio.com
Technical Support: nb-technical@bio-techne.com
Orders: nb-customerservice@bio-techne.com
General: novus@novusbio.com

Products Related to NB100-87009

NBP2-33376H	Blue Marker Antibody (6F4-F6) [HRP]
HAF008	Goat anti-Rabbit IgG Secondary Antibody [HRP]
NB7160	Goat anti-Rabbit IgG (H+L) Secondary Antibody [HRP]
NBP2-24891	Rabbit IgG Isotype Control

Limitations

This product is for research use only and is not approved for use in humans or in clinical diagnosis. Primary Antibodies are guaranteed for 1 year from date of receipt.

For more information on our 100% guarantee, please visit www.novusbio.com/guarantee

Earn gift cards/discounts by submitting a review: www.novusbio.com/reviews/submit/NB100-87009

Earn gift cards/discounts by submitting a publication using this product:
www.novusbio.com/publications

