

Product Datasheet

Tau [p Ser262] Antibody NB100-82242

Unit Size: 0.05 ml

Store at 4C short term. Aliquot and store at -20C long term. Avoid freeze-thaw cycles.

www.novusbio.com



technical@novusbio.com

Reviews: 1

Protocols, Publications, Related Products, Reviews, Research Tools and Images at:
www.novusbio.com/NB100-82242

Updated 9/9/2025 v.20.1

**Earn rewards for product
reviews and publications.**

Submit a publication at www.novusbio.com/publications

Submit a review at www.novusbio.com/reviews/destination/NB100-82242



NB100-82242

Tau [p Ser262] Antibody

Product Information	
Unit Size	0.05 ml
Concentration	1.0 mg/ml
Storage	Store at 4C short term. Aliquot and store at -20C long term. Avoid freeze-thaw cycles.
Clonality	Polyclonal
Preservative	0.02% Sodium Azide
Isotype	IgG
Purity	Immunogen affinity purified
Buffer	PBS, 50% glycerol, 0.5% BSA

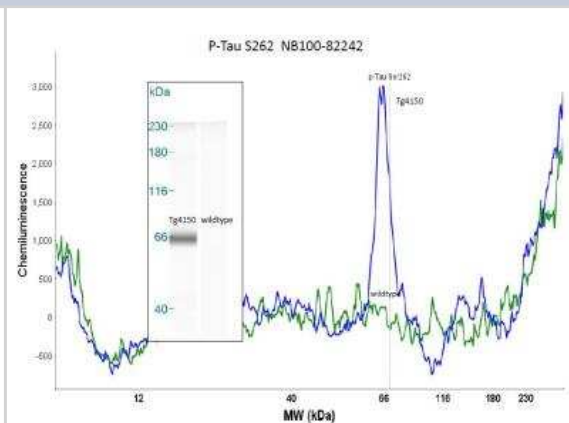
Product Description	
Description	Novus Biologicals Rabbit Tau [p Ser262] Antibody (NB100-82242) is a polyclonal antibody validated for use in WB and Simple Western. All Novus Biologicals antibodies are covered by our 100% guarantee.
Host	Rabbit
Gene ID	4137
Gene Symbol	MAPT
Species	Human, Mouse, Rat
Marker	pan-Neuronal Marker
Specificity/Sensitivity	Detects endogenous levels of Tau only when phosphorylated at serine 262.
Immunogen	The antiserum was produced against synthesized phosphopeptide derived from human Tau around the phosphorylation site of serine 262 (I-G-SP-T-E).

Product Application Details	
Applications	Western Blot, Simple Western
Recommended Dilutions	Western Blot 1:500-1:2000, Simple Western
Application Notes	See Simple Western Antibody Database for Simple Western validation: Tested in Mouse brain tissue (striatum) from 4 month old Tg4150 and wild-type mice, separated by Size

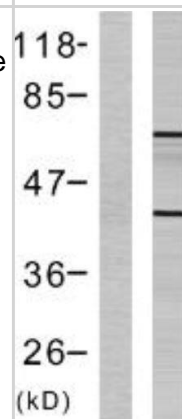


Images

Simple Western: Tau [p Ser262] Antibody [NB100-82242] - Simple western analysis of mouse brain tissue (striatum) from 4 month old Tg4150 and wildtype mice. Image courtesy of Dr. Brandi Wasek-Patterson at Baylor Research Institute, Institute of Metabolic Disease.



Western Blot: Tau [p Ser262] Antibody [NB100-82242] - Western blot analysis of lysates from HeLa cells, using NB100-82242. The lane on the left is blocked with the phospho peptide.





Novus Biologicals USA

10730 E. Briarwood Avenue
Centennial, CO 80112
USA
Phone: 303.730.1950
Toll Free: 1.888.506.6887
Fax: 303.730.1966
nb-customerservice@bio-techne.com

Bio-Techne Canada

21 Canmotor Ave
Toronto, ON M8Z 4E6
Canada
Phone: 905.827.6400
Toll Free: 855.668.8722
Fax: 905.827.6402
canada.inquires@bio-techne.com

Bio-Techne Ltd

19 Barton Lane
Abingdon Science Park
Abingdon, OX14 3NB, United Kingdom
Phone: (44) (0) 1235 529449
Free Phone: 0800 37 34 15
Fax: (44) (0) 1235 533420
info.EMEA@bio-techne.com

General Contact Information

www.novusbio.com
Technical Support: nb-technical@bio-techne.com
Orders: nb-customerservice@bio-techne.com
General: novus@novusbio.com

Products Related to NB100-82242

NBL1-12894	Tau Overexpression Lysate
NBP2-33376H	Blue Marker Antibody (6F4-F6) [HRP]
HAF008	Goat anti-Rabbit IgG Secondary Antibody [HRP]
NB7160	Goat anti-Rabbit IgG (H+L) Secondary Antibody [HRP]
NBP2-24891	Rabbit IgG Isotype Control

Limitations

This product is for research use only and is not approved for use in humans or in clinical diagnosis. Primary Antibodies are guaranteed for 1 year from date of receipt.

For more information on our 100% guarantee, please visit www.novusbio.com/guarantee

Earn gift cards/discounts by submitting a review: www.novusbio.com/reviews/submit/NB100-82242

Earn gift cards/discounts by submitting a publication using this product:
www.novusbio.com/publications

