

Product Datasheet

DOK1 [p Tyr362] Antibody - BSA Free NB100-82112

Unit Size: 0.05 ml

Store at 4C short term. Aliquot and store at -20C long term. Avoid freeze-thaw cycles.

www.novusbio.com



technical@novusbio.com

Protocols, Publications, Related Products, Reviews, Research Tools and Images at:
www.novusbio.com/NB100-82112

Updated 9/9/2025 v.20.1

Earn rewards for product
reviews and publications.

Submit a publication at www.novusbio.com/publications

Submit a review at www.novusbio.com/reviews/destination/NB100-82112



NB100-82112

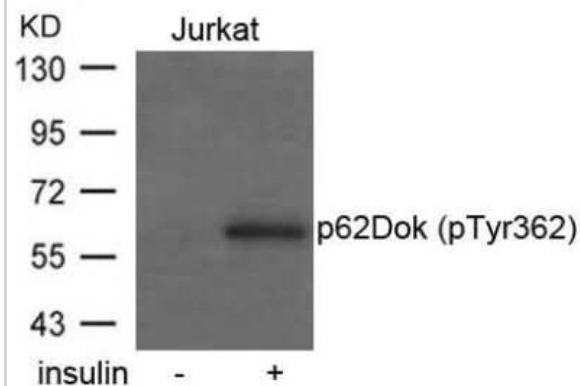
DOK1 [p Tyr362] Antibody - BSA Free

Product Information	
Unit Size	0.05 ml
Concentration	1.0 mg/ml
Storage	Store at 4C short term. Aliquot and store at -20C long term. Avoid freeze-thaw cycles.
Clonality	Polyclonal
Preservative	0.02% Sodium Azide
Isotype	IgG
Purity	Immunogen affinity purified
Buffer	PBS (without Mg ²⁺ and Ca ²⁺), pH 7.4, 150 mM NaCl, 50% glycerol
Target Molecular Weight	55 kDa
Product Description	
Description	Novus Biologicals Rabbit DOK1 [p Tyr362] Antibody - BSA Free (NB100-82112) is a polyclonal antibody validated for use in IHC and WB. All Novus Biologicals antibodies are covered by our 100% guarantee.
Host	Rabbit
Gene ID	1796
Gene Symbol	DOK1
Species	Human, Mouse, Rat
Specificity/Sensitivity	Detects endogenous levels of DOK1 only when phosphorylated at tyrosine 362.
Immunogen	The antiserum was produced against synthesized phosphopeptide derived from human DOK1 around the phosphorylation site of tyrosine 362 (P-I-YP-D-E).
Product Application Details	
Applications	Western Blot, Immunohistochemistry-Paraffin, Immunohistochemistry
Recommended Dilutions	Western Blot 1:500-1:1000, Immunohistochemistry 1:50-1:100, Immunohistochemistry-Paraffin 1:50-1:100

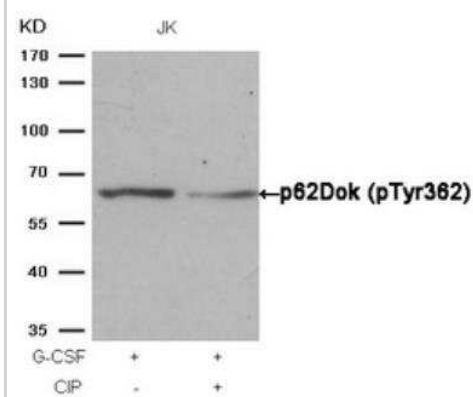


Images

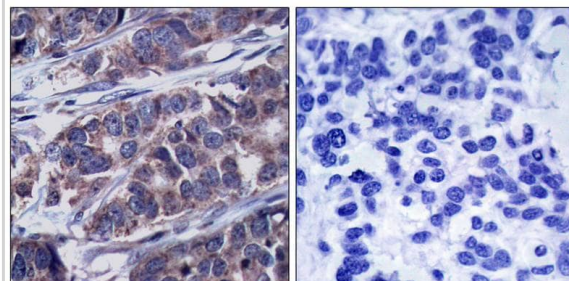
Western Blot: DOK1 [p Tyr362] Antibody [NB100-82112] - Analysis of extracts from Jurkat cells untreated or treated with insulin using NB100-82112



Western Blot: DOK1 [p Tyr362] Antibody [NB100-82112] - Western blot analysis of extracts from JK cells, treated with G-CSF or calf intestinal phosphatase (CIP)



Immunohistochemistry-Paraffin: DOK1 [p Tyr362] Antibody [NB100-82112] - Immunohistochemical analysis of paraffin-embedded human breast carcinoma tissue, using NB100-82112(left) or the same antibody preincubated with blocking peptide (right).





Novus Biologicals USA

10730 E. Briarwood Avenue
Centennial, CO 80112
USA
Phone: 303.730.1950
Toll Free: 1.888.506.6887
Fax: 303.730.1966
nb-customerservice@bio-techne.com

Bio-Techne Canada

21 Canmotor Ave
Toronto, ON M8Z 4E6
Canada
Phone: 905.827.6400
Toll Free: 855.668.8722
Fax: 905.827.6402
canada.inquires@bio-techne.com

Bio-Techne Ltd

19 Barton Lane
Abingdon Science Park
Abingdon, OX14 3NB, United Kingdom
Phone: (44) (0) 1235 529449
Free Phone: 0800 37 34 15
Fax: (44) (0) 1235 533420
info.EMEA@bio-techne.com

General Contact Information

www.novusbio.com
Technical Support: nb-technical@bio-techne.com
Orders: nb-customerservice@bio-techne.com
General: novus@novusbio.com

Products Related to NB100-82112

NBL1-09977	DOK1 Overexpression Lysate
NBP2-33376H	Blue Marker Antibody (6F4-F6) [HRP]
HAF008	Goat anti-Rabbit IgG Secondary Antibody [HRP]
NB7160	Goat anti-Rabbit IgG (H+L) Secondary Antibody [HRP]
NBP2-24891	Rabbit IgG Isotype Control

Limitations

This product is for research use only and is not approved for use in humans or in clinical diagnosis. Primary Antibodies are guaranteed for 1 year from date of receipt.

For more information on our 100% guarantee, please visit www.novusbio.com/guarantee

Earn gift cards/discounts by submitting a review: www.novusbio.com/reviews/submit/NB100-82112

Earn gift cards/discounts by submitting a publication using this product:
www.novusbio.com/publications

