

Product Datasheet

MKK6/MEK6 [p Ser207] Antibody NB100-82050

Unit Size: 0.05 ml

Store at 4C short term. Aliquot and store at -20C long term. Avoid freeze-thaw cycles.

www.novusbio.com



technical@novusbio.com

Protocols, Publications, Related Products, Reviews, Research Tools and Images at:
www.novusbio.com/NB100-82050

Updated 9/9/2025 v.20.1

Earn rewards for product
reviews and publications.

Submit a publication at www.novusbio.com/publications

Submit a review at www.novusbio.com/reviews/destination/NB100-82050

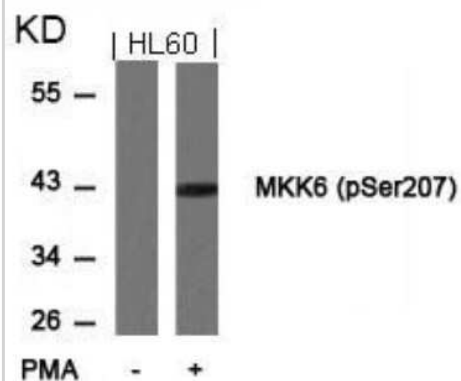


NB100-82050**MKK6/MEK6 [p Ser207] Antibody**

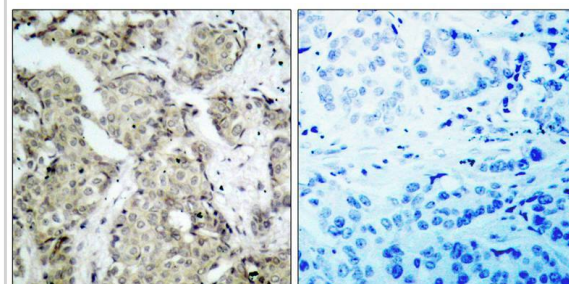
Product Information	
Unit Size	0.05 ml
Concentration	1.0 mg/ml
Storage	Store at 4C short term. Aliquot and store at -20C long term. Avoid freeze-thaw cycles.
Clonality	Polyclonal
Preservative	0.02% Sodium Azide
Isotype	IgG
Purity	Immunogen affinity purified
Buffer	PBS, 50% glycerol, 0.5% BSA
Target Molecular Weight	37 kDa
Product Description	
Description	Novus Biologicals Rabbit MKK6/MEK6 [p Ser207] Antibody (NB100-82050) is a polyclonal antibody validated for use in IHC, WB and ICC/IF. All Novus Biologicals antibodies are covered by our 100% guarantee.
Host	Rabbit
Gene ID	5608
Gene Symbol	MAP2K6
Species	Human, Mouse, Rat
Specificity/Sensitivity	Detects endogenous levels of MKK6/MEK6 only when phosphorylated at serine207.
Immunogen	The antiserum was produced against synthesized phosphopeptide derived from human MKK6/MEK6 around the phosphorylation site of serine 207 (V-D-SP-V-A).
Product Application Details	
Applications	Western Blot, Immunohistochemistry-Paraffin, Immunocytochemistry/Immunofluorescence, Immunohistochemistry
Recommended Dilutions	Western Blot 1:500-1:2000, Immunohistochemistry 1:100-1:300, Immunocytochemistry/ Immunofluorescence 1:50-200, Immunohistochemistry-Paraffin 1:50-1:100

Images

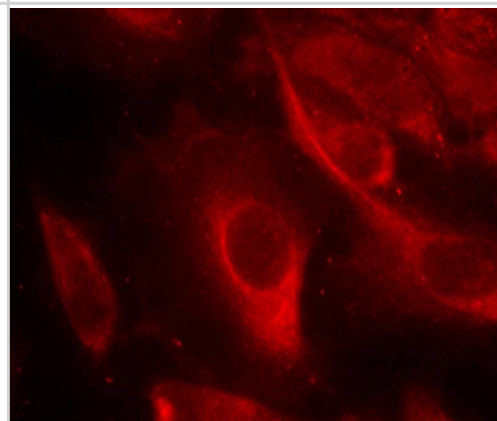
Western Blot: MKK6/MEK6 [p Ser207] Antibody [NB100-82050] - Analysis of extracts from HL60 cells untreated or treated with PMA using MKK6(Phospho-Ser207) antibody



Immunohistochemistry-Paraffin: MKK6/MEK6 [p Ser207] Antibody [NB100-82050] - Immunohistochemical analysis of paraffin- embedded human breast carcinoma tissue, using NB100-82050(left) or the same antibody preincubated with blocking peptide (right).



Immunocytochemistry/Immunofluorescence: MKK6/MEK6 [p Ser207] Antibody [NB100-82050] - Staining of methanol-fixed Hela cells showing cytoplasmic staining using NB100-82050





Novus Biologicals USA

10730 E. Briarwood Avenue
Centennial, CO 80112
USA
Phone: 303.730.1950
Toll Free: 1.888.506.6887
Fax: 303.730.1966
nb-customerservice@bio-techne.com

Bio-Techne Canada

21 Canmotor Ave
Toronto, ON M8Z 4E6
Canada
Phone: 905.827.6400
Toll Free: 855.668.8722
Fax: 905.827.6402
canada.inquires@bio-techne.com

Bio-Techne Ltd

19 Barton Lane
Abingdon Science Park
Abingdon, OX14 3NB, United Kingdom
Phone: (44) (0) 1235 529449
Free Phone: 0800 37 34 15
Fax: (44) (0) 1235 533420
info.EMEA@bio-techne.com

General Contact Information

www.novusbio.com
Technical Support: nb-technical@bio-techne.com
Orders: nb-customerservice@bio-techne.com
General: novus@novusbio.com

Products Related to NB100-82050

NBL1-12851	MKK6/MEK6 Overexpression Lysate
NBP2-33376H	Blue Marker Antibody (6F4-F6) [HRP]
HAF008	Goat anti-Rabbit IgG Secondary Antibody [HRP]
NB7160	Goat anti-Rabbit IgG (H+L) Secondary Antibody [HRP]
NBP2-24891	Rabbit IgG Isotype Control

Limitations

This product is for research use only and is not approved for use in humans or in clinical diagnosis. Primary Antibodies are guaranteed for 1 year from date of receipt.

For more information on our 100% guarantee, please visit www.novusbio.com/guarantee

Earn gift cards/discounts by submitting a review: www.novusbio.com/reviews/submit/NB100-82050

Earn gift cards/discounts by submitting a publication using this product:
www.novusbio.com/publications

