

Product Datasheet

LIM kinase 2 [p Thr505] Antibody NB100-82023

Unit Size: 0.05 ml

Store at 4C short term. Aliquot and store at -20C long term. Avoid freeze-thaw cycles.

www.novusbio.com



technical@novusbio.com

Protocols, Publications, Related Products, Reviews, Research Tools and Images at:
www.novusbio.com/NB100-82023

Updated 9/9/2025 v.20.1

Earn rewards for product
reviews and publications.

Submit a publication at www.novusbio.com/publications

Submit a review at www.novusbio.com/reviews/destination/NB100-82023



NB100-82023

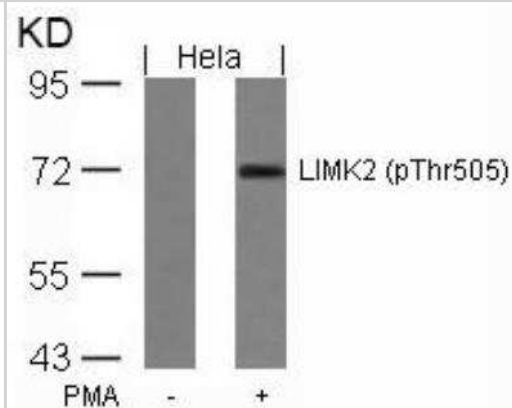
LIM kinase 2 [p Thr505] Antibody

Product Information	
Unit Size	0.05 ml
Concentration	1.0 mg/ml
Storage	Store at 4C short term. Aliquot and store at -20C long term. Avoid freeze-thaw cycles.
Clonality	Polyclonal
Preservative	0.02% Sodium Azide
Isotype	IgG
Purity	Immunogen affinity purified
Buffer	PBS, 50% glycerol, 0.5% BSA
Target Molecular Weight	72 kDa
Product Description	
Description	Novus Biologicals Rabbit LIM kinase 2 [p Thr505] Antibody (NB100-82023) is a polyclonal antibody validated for use in IHC, WB and ICC/IF. All Novus Biologicals antibodies are covered by our 100% guarantee.
Host	Rabbit
Gene ID	3985
Gene Symbol	LIMK2
Species	Human, Mouse, Rat
Specificity/Sensitivity	Detects endogenous levels of LIM kinase 2 only when phosphorylated at threonine 505.
Immunogen	The antiserum was produced against synthesized phosphopeptide derived from human LIM Kinase 2 around the phosphorylation site of threonine 505 (R-Y-TP-V-V).
Product Application Details	
Applications	Western Blot, Immunohistochemistry-Paraffin, Immunocytochemistry/Immunofluorescence, Immunohistochemistry
Recommended Dilutions	Western Blot 1:500-1:1000, Immunohistochemistry 1:50-1:100, Immunocytochemistry/ Immunofluorescence 1:100-1:200, Immunohistochemistry-Paraffin 1:50-1:100

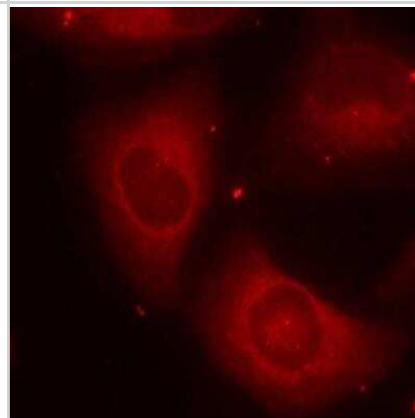


Images

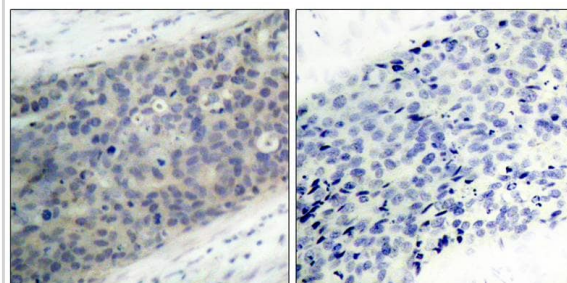
Western Blot: LIM kinase 2 [p Thr505] Antibody [NB100-82023] - Analysis of extracts from Hela cells untreated or treated with PMA using LIM kinase 2 [p Thr505] Antibody.



Immunocytochemistry/Immunofluorescence: LIM kinase 2 [p Thr505] Antibody [NB100-82023] - Staining of methanol-fixed Hela cells using LIM kinase 2 [p Thr505] Antibody.



Immunohistochemistry-Paraffin: LIM kinase 2 [p Thr505] Antibody [NB100-82023] - Analysis of paraffin- embedded human breast carcinoma tissue using NB100-82023(left) or the same antibody preincubated with blocking peptide(right).





Novus Biologicals USA

10730 E. Briarwood Avenue
Centennial, CO 80112
USA
Phone: 303.730.1950
Toll Free: 1.888.506.6887
Fax: 303.730.1966
nb-customerservice@bio-techne.com

Bio-Techne Canada

21 Canmotor Ave
Toronto, ON M8Z 4E6
Canada
Phone: 905.827.6400
Toll Free: 855.668.8722
Fax: 905.827.6402
canada.inquires@bio-techne.com

Bio-Techne Ltd

19 Barton Lane
Abingdon Science Park
Abingdon, OX14 3NB, United Kingdom
Phone: (44) (0) 1235 529449
Free Phone: 0800 37 34 15
Fax: (44) (0) 1235 533420
info.EMEA@bio-techne.com

General Contact Information

www.novusbio.com
Technical Support: nb-technical@bio-techne.com
Orders: nb-customerservice@bio-techne.com
General: novus@novusbio.com

Products Related to NB100-82023

NBP2-33376H	Blue Marker Antibody (6F4-F6) [HRP]
HAF008	Goat anti-Rabbit IgG Secondary Antibody [HRP]
NB7160	Goat anti-Rabbit IgG (H+L) Secondary Antibody [HRP]
NBP2-24891	Rabbit IgG Isotype Control

Limitations

This product is for research use only and is not approved for use in humans or in clinical diagnosis. Primary Antibodies are guaranteed for 1 year from date of receipt.

For more information on our 100% guarantee, please visit www.novusbio.com/guarantee

Earn gift cards/discounts by submitting a review: www.novusbio.com/reviews/submit/NB100-82023

Earn gift cards/discounts by submitting a publication using this product:
www.novusbio.com/publications

