

Product Datasheet

ErbB2/Her2 [p Tyr1248] Antibody NB100-81960

Unit Size: 0.05 ml

Store at 4C short term. Aliquot and store at -20C long term. Avoid freeze-thaw cycles.

www.novusbio.com



technical@novusbio.com

Publications: 3

Protocols, Publications, Related Products, Reviews, Research Tools and Images at:
www.novusbio.com/NB100-81960

Updated 9/9/2025 v.20.1

Earn rewards for product
reviews and publications.

Submit a publication at www.novusbio.com/publications

Submit a review at www.novusbio.com/reviews/destination/NB100-81960



NB100-81960

ErbB2/Her2 [p Tyr1248] Antibody

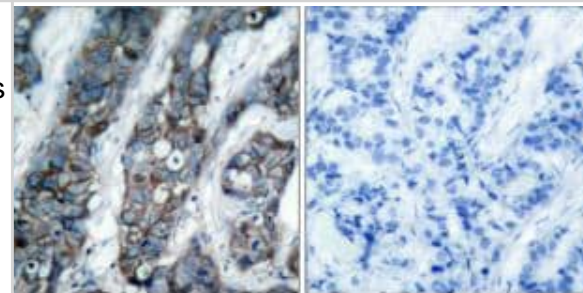
Product Information	
Unit Size	0.05 ml
Concentration	1.0 mg/ml
Storage	Store at 4C short term. Aliquot and store at -20C long term. Avoid freeze-thaw cycles.
Clonality	Polyclonal
Preservative	0.02% Sodium Azide
Isotype	IgG
Purity	Immunogen affinity purified
Buffer	PBS, 50% glycerol, 0.5% BSA
Target Molecular Weight	180 kDa

Product Description	
Description	Novus Biologicals Rabbit ErbB2/Her2 [p Tyr1248] Antibody (NB100-81960) is a polyclonal antibody validated for use in IHC, WB and ICC/IF. Anti-ErbB2/Her2 Antibody: Cited in 3 publications. All Novus Biologicals antibodies are covered by our 100% guarantee.
Host	Rabbit
Gene ID	2064
Gene Symbol	ERBB2
Species	Human, Mouse, Rat
Specificity/Sensitivity	Detects endogenous levels of ErbB2/Her2 only when phosphorylated at tyrosine1248.
Immunogen	The antiserum was produced against synthesized phosphopeptide derived from human ErbB2/Her2 around the phosphorylation site of tyrosine1248 (P-E-YP-L-G).

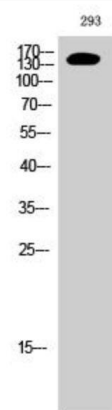
Product Application Details	
Applications	Western Blot, Immunohistochemistry-Paraffin, Immunocytochemistry/ Immunofluorescence, Immunohistochemistry
Recommended Dilutions	Western Blot 1:500-1:2000, Immunohistochemistry 1:100-1:300, Immunocytochemistry/ Immunofluorescence 1:50-200, Immunohistochemistry-Paraffin 1:50-1:100

Images

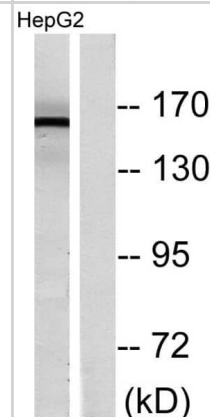
Immunohistochemistry-Paraffin: ErbB2/Her2 [p Tyr1248] Antibody [NB100-81960] - Immunohistochemical analysis of paraffin-embedded human breast carcinoma, using NB100-81960. The picture on the right is blocked with the phospho peptide.



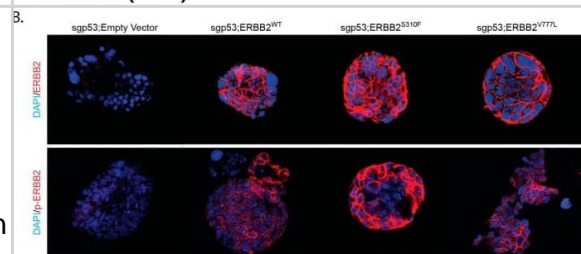
Western Blot: ErbB2/Her2 [p Tyr1248] Antibody [NB100-81960] -
Western Blot analysis of 293 cells using NB100-81960 diluted at 1: 1000



Western Blot: ErbB2/Her2 [p Tyr1248] Antibody [NB100-81960] -
Western blot analysis of lysates from HepG2 cells treated with PMA 125ng/ml 30', using NB100-81960. The lane on the right is blocked with the phospho peptide.



Immunocytochemistry/ Immunofluorescence: ErbB2/Her2 [p Tyr1248] Antibody [NB100-81960] - Mutant ERBB2 cooperates with loss of p53 & leads to papillary GBC in recipient mice. (A) Top: Schematic of human ERBB2, indicating the location of two point mutants (S310F & V777L). Bottom: retroviral vector used to transduce organoids, that had been treated with an sgp53-containing plasmid (px459) to induce loss of p53. (B) Immunofluorescence for ERBB2 (top) & phospho-ERBB2 (bottom) on organoids harboring the indicated genetic alterations. (C) Tumor volumes 36 days after s.c. implantation of the respective organoids into recipient mice. All mice transplanted with sgp53;ERBB2S310F- & sgp53;ERBB2V777L organoids exhibited tumor development, whereas sgp53;empty vector- & sgp53;ERBB2wildtype organoids did not give rise to tumors over a four-month observation period. There was no significant difference in the tumor burden of mice transplanted with sgp53;ERBB2S310F- & sgp53;ERBB2V777L organoids ($p = 0.999$). (D) Mice transplanted with sgp53;ERBB2S310F- & sgp53;ERBB2V777L organoids reached endpoint criteria with a median survival of 79.5 days & 58.5 days, respectively. (E) H&E & IHC for CK19 & EGFP on tumors generated with sgp53;ERBB2S310- & sgp53;ERBB2V777L organoids. Image collected & cropped by CiteAb from the following publication (<https://pubmed.ncbi.nlm.nih.gov/31795490>), licensed under a CC-BY license. Not internally tested by Novus Biologicals.



Publications

Erlangga Z, Wolff K, Poth T et al. Potent Antitumor Activity of Liposomal Irinotecan in an Organoid- and CRISPR-Cas9-Based Murine Model of Gallbladder Cancer Cancers 2019-11-29 [PMID: 31795490]

Scrima M, Marino FZ, Oliveira DM et al. Aberrant Signaling through the HER2-ERK1/2 Pathway is Predictive of Reduced Disease-Free and Overall Survival in Early Stage Non-Small Cell Lung Cancer (NSCLC) Patients. Journal of Cancer. 2017-01-15 [PMID: 28243327]

Eden CJ, Ju B, Murugesan M et al. Orthotopic models of pediatric brain tumors in zebrafish. Oncogene 2014-04-21 [PMID: 24747973] (IHC-P, Mouse)



Novus Biologicals USA

10730 E. Briarwood Avenue
Centennial, CO 80112
USA
Phone: 303.730.1950
Toll Free: 1.888.506.6887
Fax: 303.730.1966
nb-customerservice@bio-techne.com

Bio-Techne Canada

21 Canmotor Ave
Toronto, ON M8Z 4E6
Canada
Phone: 905.827.6400
Toll Free: 855.668.8722
Fax: 905.827.6402
canada.inquires@bio-techne.com

Bio-Techne Ltd

19 Barton Lane
Abingdon Science Park
Abingdon, OX14 3NB, United Kingdom
Phone: (44) (0) 1235 529449
Free Phone: 0800 37 34 15
Fax: (44) (0) 1235 533420
info.EMEA@bio-techne.com

General Contact Information

www.novusbio.com
Technical Support: nb-technical@bio-techne.com
Orders: nb-customerservice@bio-techne.com
General: novus@novusbio.com

Products Related to NB100-81960

NBL1-10314	ErbB2/Her2 Overexpression Lysate
NBP2-33376H	Blue Marker Antibody (6F4-F6) [HRP]
HAF008	Goat anti-Rabbit IgG Secondary Antibody [HRP]
NB7160	Goat anti-Rabbit IgG (H+L) Secondary Antibody [HRP]
NBP2-24891	Rabbit IgG Isotype Control

Limitations

This product is for research use only and is not approved for use in humans or in clinical diagnosis. Primary Antibodies are guaranteed for 1 year from date of receipt.

For more information on our 100% guarantee, please visit www.novusbio.com/guarantee

Earn gift cards/discounts by submitting a review: www.novusbio.com/reviews/submit/NB100-81960

Earn gift cards/discounts by submitting a publication using this product:

www.novusbio.com/publications



