

# Product Datasheet

## SHP-2/PTPN11 Antibody NB100-806

Unit Size: 0.1 mg

Store at -20C. Avoid freeze-thaw cycles.

[www.novusbio.com](http://www.novusbio.com)



[technical@novusbio.com](mailto:technical@novusbio.com)

### Publications: 1

Protocols, Publications, Related Products, Reviews, Research Tools and Images at:  
[www.novusbio.com/NB100-806](http://www.novusbio.com/NB100-806)

Updated 9/9/2025 v.20.1

Earn rewards for product  
reviews and publications.

Submit a publication at [www.novusbio.com/publications](http://www.novusbio.com/publications)

Submit a review at [www.novusbio.com/reviews/destination/NB100-806](http://www.novusbio.com/reviews/destination/NB100-806)



**NB100-806****SHP-2/PTPN11 Antibody**

<b>Product Information</b>	
<b>Unit Size</b>	0.1 mg
<b>Concentration</b>	0.5 mg/ml
<b>Storage</b>	Store at -20C. Avoid freeze-thaw cycles.
<b>Clonality</b>	Polyclonal
<b>Preservative</b>	0.02% Sodium Azide
<b>Isotype</b>	IgG
<b>Purity</b>	Immunogen affinity purified
<b>Buffer</b>	Tris saline (20 mM Tris pH 7.3, 150 mM NaCl), 0.5% BSA

<b>Product Description</b>	
<b>Description</b>	Novus Biologicals Goat SHP-2/PTPN11 Antibody (NB100-806) is a polyclonal antibody validated for use in WB, ELISA, Flow and ICC/IF. Anti-SHP-2/PTPN11 Antibody: Cited in 1 publication. All Novus Biologicals antibodies are covered by our 100% guarantee.
<b>Host</b>	Goat
<b>Gene ID</b>	5781
<b>Gene Symbol</b>	PTPN11
<b>Species</b>	Human
<b>Immunogen</b>	Peptide with sequence C-YENVGLMQQQKSFR corresponding to C-Terminus according to NP_002825.3.

<b>Product Application Details</b>	
<b>Applications</b>	Western Blot, Flow Cytometry, Immunocytochemistry/ Immunofluorescence, Peptide ELISA
<b>Recommended Dilutions</b>	Western Blot 1 - 3 ug/mL, Flow Cytometry 10 ug/mL, Immunocytochemistry/ Immunofluorescence 10 ug/mL, Peptide ELISA Detection limit 1:28000
<b>Application Notes</b>	WB: Approx. 70 kDa band observed in human skeletal muscle lysate (calculated MW of 68.0 kDa band according to NP_002825.3).

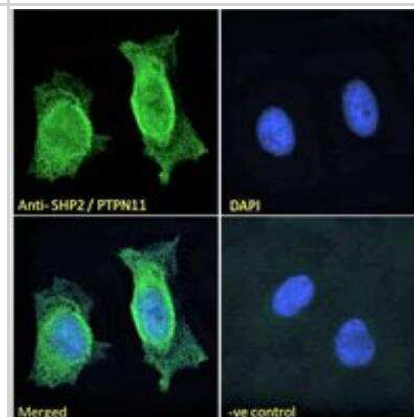


## Images

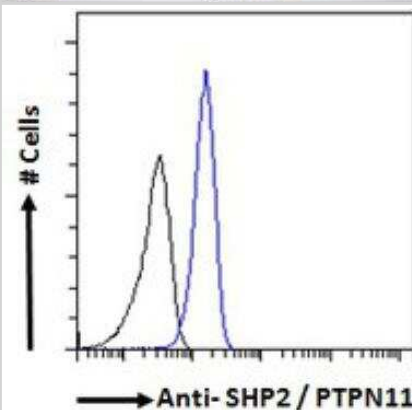
Western Blot: SHP-2/PTPN11 Antibody [NB100-806] - Human Muscle lysate (RIPA buffer, 35 ug total protein per lane). Antibody at 2 ug/mL. Detected by chemiluminescence.

250kDa  
150kDa  
100kDa  
75kDa  
50kDa  
37kDa  
25kDa  
20kDa  
15kDa  
10kDa

Immunocytochemistry/Immunofluorescence: SHP-2/PTPN11 Antibody [NB100-806] - Analysis of paraformaldehyde fixed HeLa cells, permeabilized with 0.15% Triton. Primary incubation 1hr (10 ug/mL) followed by Alexa Fluor 488 secondary antibody (2 ug/mL), showing nuclear and cytoplasmic staining. The nuclear stain is DAPI (blue). Negative control: Unimmunized goat IgG (10 ug/mL) followed by Alexa Fluor 488 secondary antibody (2 ug/mL).



Flow Cytometry: SHP-2/PTPN11 Antibody [NB100-806] - Analysis of paraformaldehyde fixed A431 cells (blue line), permeabilized with 0.5% Triton. Primary incubation 1hr (10 ug/mL) followed by Alexa Fluor 488 secondary antibody (1 ug/mL). IgG control: Unimmunized goat IgG (black line) followed by Alexa Fluor 488 secondary antibody.



## Publications

Saxton TM, Ciruna BG, Holmyard D et al. The SH2 tyrosine phosphatase shp2 is required for mammalian limb development. *Nat Genet* 2000-04-01 [PMID: 10742110]



### Novus Biologicals USA

10730 E. Briarwood Avenue  
Centennial, CO 80112  
USA  
Phone: 303.730.1950  
Toll Free: 1.888.506.6887  
Fax: 303.730.1966  
nb-customerservice@bio-techne.com

### Bio-Techne Canada

21 Canmotor Ave  
Toronto, ON M8Z 4E6  
Canada  
Phone: 905.827.6400  
Toll Free: 855.668.8722  
Fax: 905.827.6402  
canada.inquires@bio-techne.com

### Bio-Techne Ltd

19 Barton Lane  
Abingdon Science Park  
Abingdon, OX14 3NB, United Kingdom  
Phone: (44) (0) 1235 529449  
Free Phone: 0800 37 34 15  
Fax: (44) (0) 1235 533420  
info.EMEA@bio-techne.com

### General Contact Information

www.novusbio.com  
Technical Support: nb-technical@bio-techne.com  
Orders: nb-customerservice@bio-techne.com  
General: novus@novusbio.com

### Products Related to NB100-806

---

NB800-PC6	293 Whole Cell Lysate
NBP2-33376H	Blue Marker Antibody (6F4-F6) [HRP]
HAF017	Rabbit anti-Goat IgG Secondary Antibody [HRP (Horseradish Peroxidase)]
HAF109	Donkey anti-Goat IgG Secondary Antibody [HRP (Horseradish Peroxidase)]
NB410-28088-1mg	Goat IgG Isotype Control

---

### Limitations

This product is for research use only and is not approved for use in humans or in clinical diagnosis. Primary Antibodies are guaranteed for 1 year from date of receipt.

For more information on our 100% guarantee, please visit [www.novusbio.com/guarantee](http://www.novusbio.com/guarantee)

Earn gift cards/discounts by submitting a review: [www.novusbio.com/reviews/submit/NB100-806](http://www.novusbio.com/reviews/submit/NB100-806)

Earn gift cards/discounts by submitting a publication using this product:  
[www.novusbio.com/publications](http://www.novusbio.com/publications)



