

Product Datasheet

Methyltransferase like 3 Antibody - BSA Free NB100-77311

Unit Size: 100 ul

Store at 4C. Do not freeze.

www.novusbio.com



technical@novusbio.com

Protocols, Publications, Related Products, Reviews, Research Tools and Images at:
www.novusbio.com/NB100-77311

Updated 9/9/2025 v.20.1

Earn rewards for product
reviews and publications.

Submit a publication at www.novusbio.com/publications

Submit a review at www.novusbio.com/reviews/destination/NB100-77311



NB100-77311**Methyltransferase like 3 Antibody - BSA Free**

Product Information	
Unit Size	100 ul
Concentration	1.0 mg/ml
Storage	Store at 4C. Do not freeze.
Clonality	Polyclonal
Preservative	0.09% Sodium Azide
Isotype	IgG
Purity	Immunogen affinity purified
Buffer	Tris-Citrate/Phosphate (pH 7.0 - 8.0)

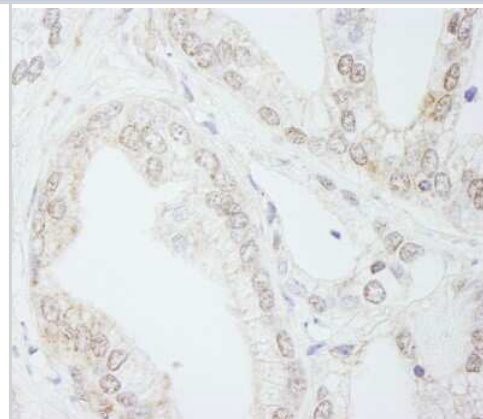
Product Description	
Description	Novus Biologicals Rabbit Methyltransferase like 3 Antibody - BSA Free (NB100-77311) is a polyclonal antibody validated for use in IHC and IP. All Novus Biologicals antibodies are covered by our 100% guarantee.
Host	Rabbit
Gene ID	56339
Gene Symbol	METTL3
Species	Human
Immunogen	The immunogen recognized by this antibody maps to a region between residue 530 and 580 of human methyltransferase like 3 (N6-adenosine-methyltransferase 70 kDa subunit) using the numbering given in entry NP_062826.2 (GeneID 56339).

Product Application Details	
Applications	Immunohistochemistry-Paraffin, Immunohistochemistry, Immunoprecipitation, Western Blot (Negative)
Recommended Dilutions	Immunohistochemistry, Immunoprecipitation 2 - 5 ug/mg lysate, Immunohistochemistry-Paraffin 1:500- 1:2000, Western Blot (Negative)
Application Notes	Epitope retrieval with citrate buffer pH6.0 is recommended for FFPE tissue sections.

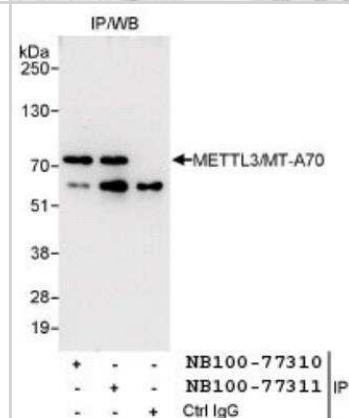


Images

Immunohistochemistry-Paraffin: Methyltransferase like 3 Antibody [NB100-77311] - Sample: FFPE section of human prostate carcinoma. Antibody: Affinity purified rabbit anti- METTL3/MT-A70 used at a dilution of 1:1,000 (1 ug/ml). Detection: DAB



Immunoprecipitation: Methyltransferase like 3 Antibody [NB100-77311] - Detection of Human METTL3 by Western Blot of immunoprecipitants. Sample: Whole cell lysate (1 mg for IP, 20% of IP loaded) from HeLa cells. Antibodies: Affinity purified rabbit anti-METTL3/MT-A70 antibody (NB100-77311) used for IP at 3 mcg/mg lysate. METTL3/MT-A70 was also immunoprecipitated by rabbit anti-METTL3/MT-A70 antibody (NB100-77310), which recognizes an upstream epitope. For blotting immunoprecipitated METTL3/MT-A70, NB100-77310 was used at 0.1 mcg/ml Detection: Chemiluminescence with exposure times of 30 seconds (A and B). anti-METTL3/MT-A70 antibody NB100-77310, which recognizes an upstream epitope.





Novus Biologicals USA

10730 E. Briarwood Avenue
Centennial, CO 80112
USA
Phone: 303.730.1950
Toll Free: 1.888.506.6887
Fax: 303.730.1966
nb-customerservice@bio-techne.com

Bio-Techne Canada

21 Canmotor Ave
Toronto, ON M8Z 4E6
Canada
Phone: 905.827.6400
Toll Free: 855.668.8722
Fax: 905.827.6402
canada.inquires@bio-techne.com

Bio-Techne Ltd

19 Barton Lane
Abingdon Science Park
Abingdon, OX14 3NB, United Kingdom
Phone: (44) (0) 1235 529449
Free Phone: 0800 37 34 15
Fax: (44) (0) 1235 533420
info.EMEA@bio-techne.com

General Contact Information

www.novusbio.com
Technical Support: nb-technical@bio-techne.com
Orders: nb-customerservice@bio-techne.com
General: novus@novusbio.com

Products Related to NB100-77311

NBP2-33376H	Blue Marker Antibody (6F4-F6) [HRP]
HAF008	Goat anti-Rabbit IgG Secondary Antibody [HRP]
NB7160	Goat anti-Rabbit IgG (H+L) Secondary Antibody [HRP]
NBP2-24891	Rabbit IgG Isotype Control

Limitations

This product is for research use only and is not approved for use in humans or in clinical diagnosis. Primary Antibodies are guaranteed for 1 year from date of receipt.

For more information on our 100% guarantee, please visit www.novusbio.com/guarantee

Earn gift cards/discounts by submitting a review: www.novusbio.com/reviews/submit/NB100-77311

Earn gift cards/discounts by submitting a publication using this product:
www.novusbio.com/publications

