

Product Datasheet

Lysine (K)-specific Demethylase 3A/KDM3A/JMJD1A Antibody - BSA Free NB100-77282

Unit Size: 100 ul

Store at 4C. Do not freeze.

www.novusbio.com



technical@novusbio.com

Reviews: 1 **Publications: 14**

Protocols, Publications, Related Products, Reviews, Research Tools and Images at:
www.novusbio.com/NB100-77282

Updated 9/9/2025 v.20.1

Earn rewards for product
reviews and publications.

Submit a publication at www.novusbio.com/publications

Submit a review at www.novusbio.com/reviews/destination/NB100-77282

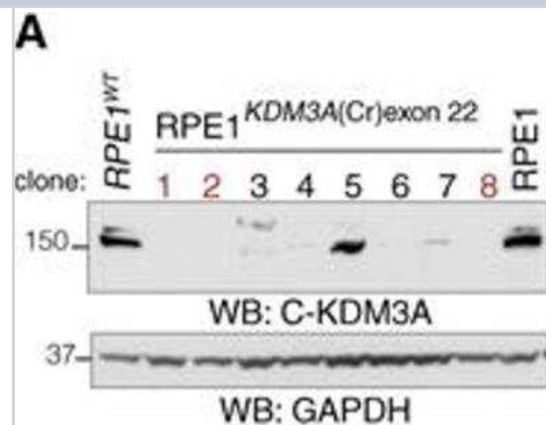


NB100-77282**Lysine (K)-specific Demethylase 3A/KDM3A/JMJD1A Antibody - BSA Free**

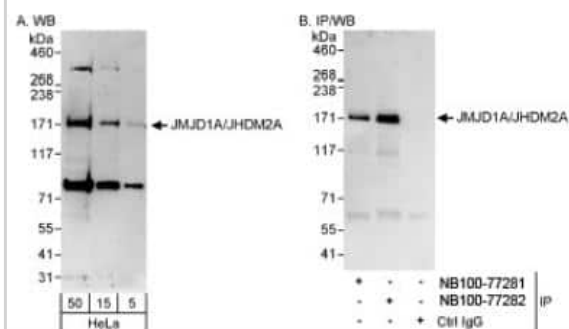
Product Information	
Unit Size	100 ul
Concentration	1.0 mg/ml
Storage	Store at 4C. Do not freeze.
Clonality	Polyclonal
Preservative	0.09% Sodium Azide
Isotype	IgG
Purity	Immunogen affinity purified
Buffer	Tris-Citrate/Phosphate (pH 7.0 - 8.0)
Product Description	
Description	Novus Biologicals Knockout (KO) Validated Rabbit Lysine (K)-specific Demethylase 3A/KDM3A/JMJD1A Antibody - BSA Free (NB100-77282) is a polyclonal antibody validated for use in IHC, WB, Flow, ICC/IF, IP and ChIP. Anti-Lysine (K)-specific Demethylase 3A/KDM3A/JMJD1A Antibody: Cited in 13 publications. All Novus Biologicals antibodies are covered by our 100% guarantee.
Host	Rabbit
Gene ID	55818
Gene Symbol	KDM3A
Species	Human, Mouse
Reactivity Notes	Mouse reactivity reported in scientific literature (PMID: 24554764).
Immunogen	The immunogen recognized by this antibody maps to a region between residue 1271 and 1321 of human jumonji domain containing 1A (JmJc domain-containing histone demethylation protein 2A) using the numbering given in entry NP_060903.2 (GeneID 55818).
Product Application Details	
Applications	Western Blot, Immunocytochemistry/ Immunofluorescence, Immunohistochemistry, Immunoprecipitation, Chromatin Immunoprecipitation (ChIP), Knockout Validated
Recommended Dilutions	Western Blot 1:2000 - 1:10000, Immunohistochemistry, Immunocytochemistry/ Immunofluorescence, Immunoprecipitation 2 - 5 ug/mg lysate, Chromatin Immunoprecipitation (ChIP), Knockout Validated
Application Notes	Use in chromatin immunoprecipitation reported in scientific literature (PMID: 19624751). Use in Immunohistochemistry reported in scientific literature (PMID: 30405805). This Lysine (K)-specific Demethylase 3A/KDM3A/JMJD1A Antibody is validated for ICC/IF from a verified customer review.

Images

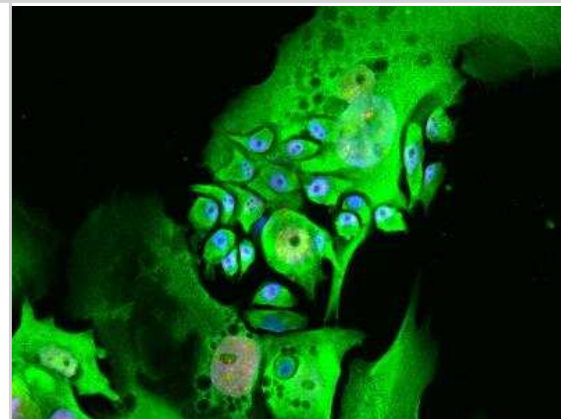
Western Blot: Lysine (K)-specific Demethylase 3A/KDM3A/JMJD1A Antibody [NB100-77282] - Total cell extracts of wild-type (RPE1WT) and KDM3A gene-edited RPE1 mutants (KDM3ACr22, named herein KDM3Anull) immunoblotted with KDM3A, revealing KDM3A-null clones (1, 2, and 8). Image collected and cropped by CiteAb from the following publication (<https://rupress.org/jcb/article/216/4/999/52171/KDM3A-coordinates-actin-dynamics-with>) licensed under a CC-BY license.



Western Blot: Lysine (K)-specific Demethylase 3A/KDM3A/JMJD1A Antibody [NB100-77282] - Detection of Human JMJD1A/JHDM2A on HeLa whole cell lysate using NB100-77282. Lysine (K)-specific Demethylase 3A/KDM3A/JMJD1A was also immunoprecipitated by rabbit anti-Lysine (K)-specific Demethylase 3A/KDM3A/JMJD1A antibody NB100-77281.



Immunocytochemistry/Immunofluorescence: Lysine (K)-specific Demethylase 3A/KDM3A/JMJD1A Antibody [NB100-77282] - Human cancer cells stained with NB100-77282 and Alexa Fluor 488 conjugated goat-anti-rabbit secondary antibody. DNA stained with Hoechst 33342. Staining shows KDM3A protein in mixed nuclear and cytoplasmic location. ICC/IF image submitted by a verified customer review.



Publications

H Kim, D Kim, SA Choi, CR Kim, SK Oh, KE Pyo, J Kim, SH Lee, JB Yoon, Y Zhang, SH Baek KDM3A histone demethylase functions as an essential factor for activation of JAK2-STAT3 signaling pathway Proc. Natl. Acad. Sci. U.S.A., 2018-10-30;0(0):. 2018-10-30 [PMID: 30377265]

Li J, Yuan S, Norgard RJ et al. Epigenetic and Transcriptional Control of the Epidermal Growth Factor Receptor Regulates the Tumor Immune Microenvironment in Pancreatic Cancer Cancer Discovery 2021-03-01 [PMID: 33158848]

Yuan Sui, Xiaomeng Li, Sangphil Oh, Bin Zhang, Willard M. Freeman, Sook Shin, Ralf Janknecht Opposite Roles of the JMJD1A Interaction Partners MDFI and MDFIC in Colorectal Cancer Scientific Reports 2020-05-26 [PMID: 32457453]

Sui Y, Jiang H, Kellogg CM et al. Promotion of colorectal cancer by transcription factor BHLHE40 involves upregulation of ADAM19 and KLF7 Frontiers in oncology 2023-02-20 [PMID: 36890812] (WB, Human)

Oh, S, Song, H Et al. Cooperation between ETS transcription factor ETV1 and histone demethylase JMJD1A in colorectal cancer. Int J Oncol 2020-12-01 [PMID: 33174020] (FLOW, Rat)

Yuan SGS Epigenetic Reprogramming in Tumor Plasticity Thesis 2020-01-01 (IP)

Kim J, Choi Sa, Kim J et Al. Lysine-specific demethylase 3A is important for autophagic occurrence Biochem. Biophys. Res. Commun. 2020-03-19 [PMID: 32201075] (Human)

Li X, Oh S, Song H et al. A potential common role of the Jumonji C domain containing 1A histone demethylase and chromatin remodeler ATRX in promoting colon cancer. Oncol Lett 2018-09-24 [PMID: 30405805] (IF/IHC, WB, Human)

Yeyati PL, Schiller R, Mali G et al. KDM3A coordinates actin dynamics with intraflagellar transport to regulate cilia stability. J. Cell Biol. 2017-02-28 [PMID: 28246120] (WB, IP, Human)

Ueda J, Ho JC, Lee KL et al. The Hypoxia-Inducible Epigenetic Regulators Jmjd1a and G9a Provide a Mechanistic Link between Angiogenesis and Tumor Growth. Mol. Cell. Biol. 2014-07-28 [PMID: 25071150] (WB, Mouse)

Details:

JMJD1A antibody used in WB on wild-type (WT) and Jmjd1a knockout (KO1 and KO2) embryonic stem cells (Fig 2B), 1% hypoxia exposed WT ES cells (Fig 4A), WT or Jmjd1a KO ES allograft tumors (8D) and Jmjd1a KO ES cells stably transfected with G9a shRNA (Fig 10A).

Kasioulis I, Syred HM, Tate P et al. Kdm3a lysine demethylase is an Hsp90 client required for cytoskeletal rearrangements during spermatogenesis. Mol. Biol. Cell. 2014-02-19 [PMID: 24554764] (WB, Mouse)

Inagaki T, Tachibana M, Magoori K et al. Obesity and metabolic syndrome in histone demethylase JHDM2a-deficient mice. Genes Cells. 2009-08-01 [PMID: 19624751] (Chemotaxis, WB, Mouse)

More publications at <http://www.novusbio.com/NB100-77282>



Novus Biologicals USA

10730 E. Briarwood Avenue
Centennial, CO 80112
USA
Phone: 303.730.1950
Toll Free: 1.888.506.6887
Fax: 303.730.1966
nb-customerservice@bio-techne.com

Bio-Techne Canada

21 Canmotor Ave
Toronto, ON M8Z 4E6
Canada
Phone: 905.827.6400
Toll Free: 855.668.8722
Fax: 905.827.6402
canada.inquires@bio-techne.com

Bio-Techne Ltd

19 Barton Lane
Abingdon Science Park
Abingdon, OX14 3NB, United Kingdom
Phone: (44) (0) 1235 529449
Free Phone: 0800 37 34 15
Fax: (44) (0) 1235 533420
info.EMEA@bio-techne.com

General Contact Information

www.novusbio.com
Technical Support: nb-technical@bio-techne.com
Orders: nb-customerservice@bio-techne.com
General: novus@novusbio.com

Products Related to NB100-77282

NBL1-12102	Lysine (K)-specific Demethylase 3A/KDM3A/JMJD1A Overexpression Lysate
NBP2-33376H	Blue Marker Antibody (6F4-F6) [HRP]
HAF008	Goat anti-Rabbit IgG Secondary Antibody [HRP]
NB7160	Goat anti-Rabbit IgG (H+L) Secondary Antibody [HRP]
NBP2-24891	Rabbit IgG Isotype Control

Limitations

This product is for research use only and is not approved for use in humans or in clinical diagnosis. Primary Antibodies are guaranteed for 1 year from date of receipt.

For more information on our 100% guarantee, please visit www.novusbio.com/guarantee

Earn gift cards/discounts by submitting a review: www.novusbio.com/reviews/submit/NB100-77282

Earn gift cards/discounts by submitting a publication using this product:

www.novusbio.com/publications



