

Product Datasheet

CIP2A Antibody NB100-74663

Unit Size: 0.1 ml

Store at 4C. Do not freeze.

www.novusbio.com



technical@novusbio.com

Publications: 12

Protocols, Publications, Related Products, Reviews, Research Tools and Images at:
www.novusbio.com/NB100-74663

Updated 9/9/2025 v.20.1

**Earn rewards for product
reviews and publications.**

Submit a publication at www.novusbio.com/publications

Submit a review at www.novusbio.com/reviews/destination/NB100-74663



NB100-74663

CIP2A Antibody

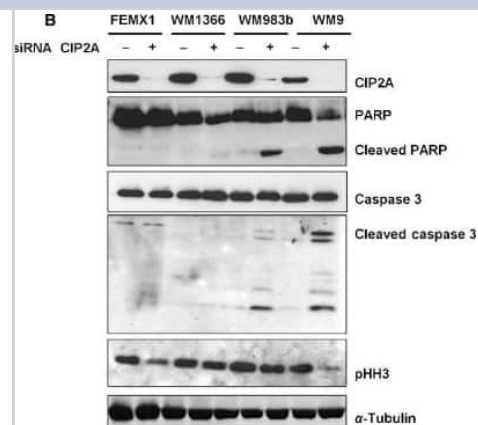
Product Information	
Unit Size	0.1 ml
Concentration	0.25 mg/ml
Storage	Store at 4C. Do not freeze.
Clonality	Polyclonal
Preservative	0.09% Sodium Azide
Isotype	IgG
Purity	Immunogen affinity purified
Buffer	TBS and 0.1% BSA

Product Description	
Description	Novus Biologicals Rabbit CIP2A Antibody (NB100-74663) is a polyclonal antibody validated for use in IHC, WB, Flow and ICC/IF. Anti-CIP2A Antibody: Cited in 11 publications. All Novus Biologicals antibodies are covered by our 100% guarantee.
Host	Rabbit
Gene ID	57650
Gene Symbol	CIP2A
Species	Human, Mouse, Rat
Reactivity Notes	Mouse reactivity reported in scientific literature (PMID: 20447748). Rat reactivity reported in scientific literature (PMID: 29464081).
Immunogen	The immunogen recognized by this antibody maps to a region between residue 550 and 600 of human cancerous inhibitor of PP2A using the numbering given in entry NP_065941.1 (GeneID 57650).

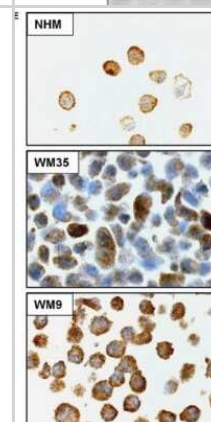
Product Application Details	
Applications	Western Blot, Immunohistochemistry-Paraffin, Electron Microscopy, Flow Cytometry, Immunocytochemistry/ Immunofluorescence, Immunohistochemistry
Recommended Dilutions	Western Blot 1:100-1:2000, Flow Cytometry 1:10-1:1000, Immunohistochemistry 1:100-1:500, Immunocytochemistry/ Immunofluorescence 1:50 - 1:500, Immunohistochemistry-Paraffin 1:100-1:500, Electron Microscopy
Application Notes	Epitope exposure with citrate buffer exposure is recommended to enhance staining. Although not tested this antibody may be useful in frozen sections. WB was reported in (PMID: 22328001). Use in Flow Cytometry reported in (PMID: 20447748). Use in Electron Microscopy reported in scientific literature (PMID: 20447748).

Images

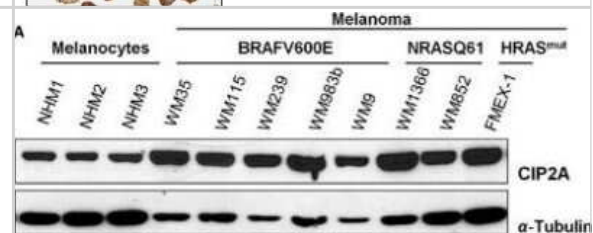
Western Blot: CIP2A Antibody [NB100-74663] - CIP2A downregulation reduces proliferation and induces apoptosis in melanoma cells. Immunoblot analysis showing reduction in cancerous inhibitor of protein phosphatase 2A protein levels 48 h post siRNA transfection and effects on proliferation and apoptosis markers. The figure is representative of at least three independent biological experiments. Image collected and cropped by CiteAb from the following publication (<https://doi.wiley.com/10.1002/cam4.425>), licensed under a CC-BY license.



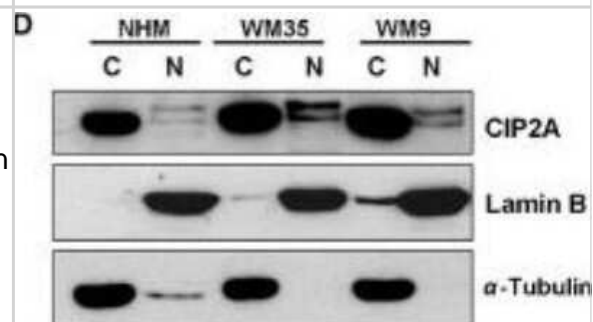
Immunohistochemistry: CIP2A Antibody [NB100-74663] - Characterization of CIP2A expression in a panel of normal human melanocytes (NHM) and melanoma cell lines. Cytoplasmic and nuclear expression of CIP2A in normal melanocytes, primary and metastatic melanoma cell lines assessed by immunohistochemical staining. CIP2A = cancerous inhibitor of protein phosphatase 2A. Image collected and cropped by CiteAb from the following publication (<https://doi.wiley.com/10.1002/cam4.425>), licensed under a CC-BY license.



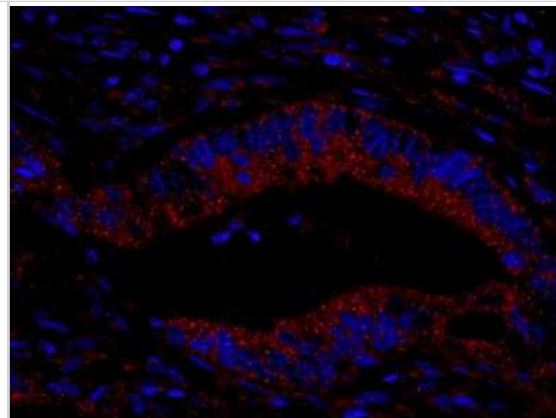
Western Blot: CIP2A Antibody [NB100-74663] - Characterization of CIP2A expression in a panel of normal human melanocytes (NHM) and melanoma cell lines. Immunoblot analysis of protein expression levels of CIP2A. Image collected and cropped by CiteAb from the following publication (<https://doi.wiley.com/10.1002/cam4.425>), licensed under a CC-BY license.



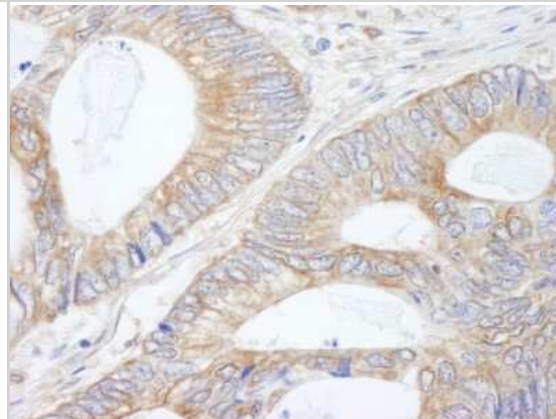
Western Blot: CIP2A Antibody [NB100-74663] - Characterization of CIP2A expression in a panel of normal human melanocytes (NHM) and melanoma cell lines. Cytoplasmic and nuclear expression of CIP2A in normal melanocytes, primary and metastatic melanoma cell lines assessed by immunoblot analysis. CIP2A = cancerous inhibitor of protein phosphatase 2A. Image collected and cropped by CiteAb from the following publication (<https://doi.wiley.com/10.1002/cam4.425>), licensed under a CC-BY license.



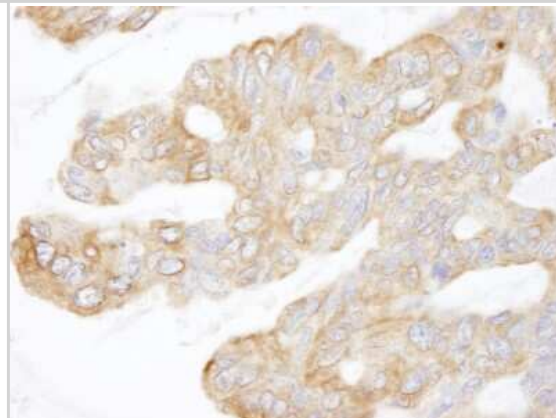
Immunohistochemistry: CIP2A Antibody [NB100-74663] - Section of human colon carcinoma. Antibody: Affinity purified rabbit anti-CIP2A used at a dilution of 1:100. Detection: Red-fluorescent goat anti-rabbit IgG highly cross-adsorbed Antibody used at a dilution of 1:100.



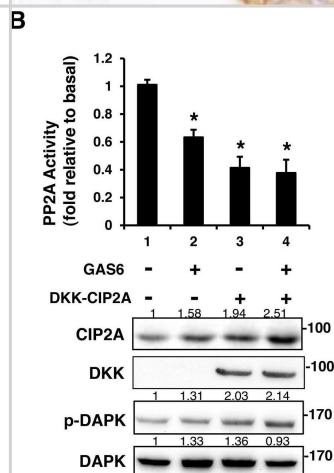
Immunohistochemistry-Paraffin: CIP2A Antibody [NB100-74663] - Section of human colon carcinoma. Antibody: Affinity purified rabbit anti-CIP2A used at a dilution of 1:250. Detection: DAB



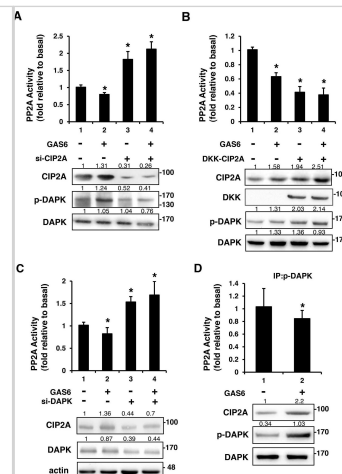
Immunohistochemistry-Paraffin: CIP2A Antibody [NB100-74663] - Section of human ovarian carcinoma. Antibody: Affinity purified rabbit anti-CIP2A used at a dilution of 1:250. Detection: DAB



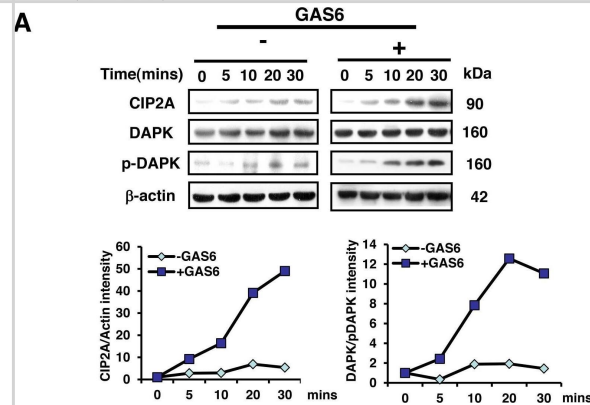
Western Blot: CIP2A Antibody [NB100-74663] - CIP2A is an inhibitor of PP2A-mediated DAPK dephosphorylation. RSC96 cells were transfected with control, CIP2A siRNA (A), DKK-CIP2A (B), or DAPK siRNA (C) for 48 h & then exposed to GAS6 (100 ng/ml) for 30 min. PP2A activity & immunoblotting evaluations of DKK, CIP2A, pDAPK, & DAPK were performed. (D) RSC96 cells were incubated with GAS6 (100 ng/ml) for 30 min & co-immunoprecipitation between CIP2A, pDAPK & PP2A was evaluated. Immunoprecipitated PP2A activity was measured. Data are the mean \pm SD, & n = 3 for each time point. * p < 0.05, ** p < 0.01, vs. control. Image collected & cropped by CiteAb from the following publication (<https://www.oncotarget.com/lookup/doi/10.18632/oncotarget.23978>), licensed under a CC-BY license. Not internally tested by Novus Biologicals.



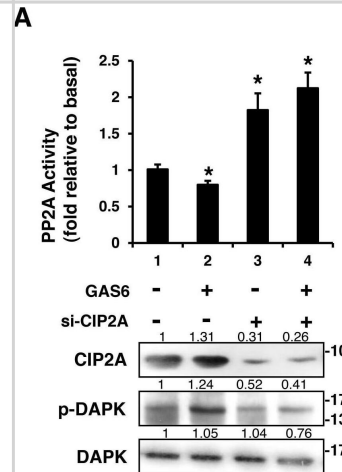
Western Blot: CIP2A Antibody [NB100-74663] - CIP2A is an inhibitor of PP2A-mediated DAPK dephosphorylation. RSC96 cells were transfected with control, CIP2A siRNA (A), DKK-CIP2A (B), or DAPK siRNA (C) for 48 h & then exposed to GAS6 (100 ng/ml) for 30 min. PP2A activity & immunoblotting evaluations of DKK, CIP2A, pDAPK, & DAPK were performed. (D) RSC96 cells were incubated with GAS6 (100 ng/ml) for 30 min & co-immunoprecipitation between CIP2A, pDAPK & PP2A was evaluated. Immunoprecipitated PP2A activity was measured. Data are the mean \pm SD, & n = 3 for each time point. * p < 0.05, ** p < 0.01, vs. control. Image collected & cropped by CiteAb from the following publication (<https://www.oncotarget.com/lookup/doi/10.18632/oncotarget.23978>), licensed under a CC-BY license. Not internally tested by Novus Biologicals.



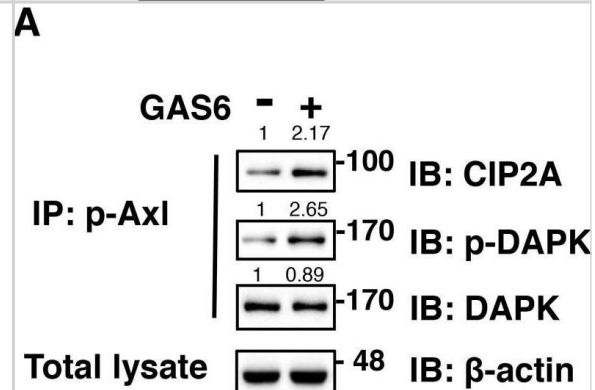
Western Blot: CIP2A Antibody [NB100-74663] - GAS6 increases the amount of both CIP2A & p-DAPK in RSC96 cells. (A) RSC96 cells were incubated with GAS6 (100 ng/ml), & immunoblotting evaluations of CIP2A & p-DAPK expression were performed. The lower panel shows the intensity during basal conditions from the scanned imaged (upper panel). (B) RSC96 cells incubated with & without GAS6 (100 ng/ml) for 30 min & analysed by immunofluorescence. (C) Immunohistochemistry images demonstrated that CIP2A expression levels were higher than sham levels at 14 days & 28 days in the cavernous nerve after BCNI. Image collected & cropped by CiteAb from the following publication (<https://www.oncotarget.com/lookup/doi/10.18632/oncotarget.23978>), licensed under a CC-BY license. Not internally tested by Novus Biologicals.



Western Blot: CIP2A Antibody [NB100-74663] - CIP2A is an inhibitor of PP2A-mediated DAPK dephosphorylation. RSC96 cells were transfected with control, CIP2A siRNA (A), DKK-CIP2A (B), or DAPK siRNA (C) for 48 h & then exposed to GAS6 (100 ng/ml) for 30 min. PP2A activity & immunoblotting evaluations of DKK, CIP2A, pDAPK, & DAPK were performed. (D) RSC96 cells were incubated with GAS6 (100 ng/ml) for 30 min & co-immunoprecipitation between CIP2A, pDAPK & PP2A was evaluated. Immunoprecipitated PP2A activity was measured. Data are the mean \pm SD, & n = 3 for each time point. * p < 0.05, ** p < 0.01, vs. control. Image collected & cropped by CiteAb from the following publication (<https://www.oncotarget.com/lookup/doi/10.18632/oncotarget.23978>), licensed under a CC-BY license. Not internally tested by Novus Biologicals.

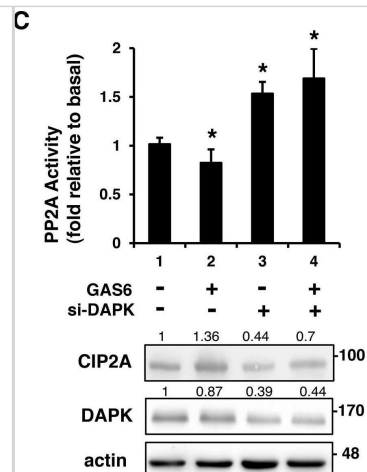


Western Blot: CIP2A Antibody [NB100-74663] - GAS6 triggers p-Axl, p-DAPK & CIP2A to form a protein complex in RSC96 cells. (A-B) Co-immunoprecipitation between p-Axl, p-DAPK & CIP2A with GAS6 stimulation for 30 min in RSC96 cells. Total lysate indicates 1/10 input in each experiment. The relative quantification of protein expression was normalized with respect to β -actin expression. (C) Immunofluorescence image demonstrating co-localized CIP2A & p-Axl & co-localized p-Axl & p-DAPK (D) after GAS6 stimulation for 30 min in RSC96 cells. Image collected & cropped by CiteAb from the following publication (<https://www.oncotarget.com/lookup/doi/10.18632/oncotarget.23978>), licensed under a CC-BY license. Not internally tested by Novus Biologicals.



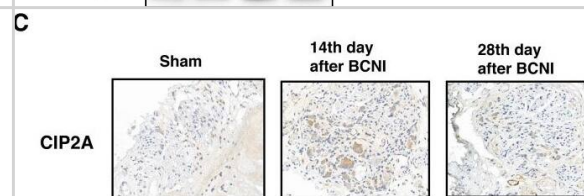
Western Blot: CIP2A Antibody [NB100-74663] - CIP2A is an inhibitor of PP2A-mediated DAPK dephosphorylation. RSC96 cells were transfected with control, CIP2A siRNA (A), DKK-CIP2A (B), or DAPK siRNA (C) for 48 h & then exposed to GAS6 (100 ng/ml) for 30 min. PP2A activity & immunoblotting evaluations of DKK, CIP2A, pDAPK, & DAPK were performed. (D) RSC96 cells were incubated with GAS6 (100 ng/ml) for 30 min & co-immunoprecipitation between CIP2A, pDAPK & PP2A was evaluated. Immunoprecipitated PP2A activity was measured. Data are the mean \pm SD, & n = 3 for each time point. * p < 0.05, ** p < 0.01, vs. control. Image collected & cropped by CiteAb from the following publication

(<https://www.oncotarget.com/lookup/doi/10.18632/oncotarget.23978>), licensed under a CC-BY license. Not internally tested by Novus Biologicals.



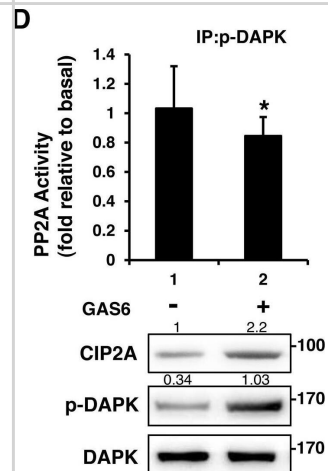
Immunohistochemistry-Paraffin: CIP2A Antibody [NB100-74663] - GAS6 increases the amount of both CIP2A & p-DAPK in RSC96 cells (A). RSC96 cells were incubated with GAS6 (100 ng/ml), & immunoblotting evaluations of CIP2A & p-DAPK expression were performed. The lower panel shows the intensity during basal conditions from the scanned imaged (upper panel). (B) RSC96 cells incubated with & without GAS6 (100 ng/ml) for 30 min & analysed by immunofluorescence. (C) Immunohistochemistry images demonstrated that CIP2A expression levels were higher than sham levels at 14 days & 28 days in the cavernous nerve after BCNI. Image collected & cropped by CiteAb from the following publication

(<https://www.oncotarget.com/lookup/doi/10.18632/oncotarget.23978>), licensed under a CC-BY license. Not internally tested by Novus Biologicals.



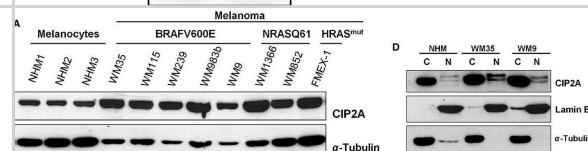
Western Blot: CIP2A Antibody [NB100-74663] - CIP2A is an inhibitor of PP2A-mediated DAPK dephosphorylation. RSC96 cells were transfected with control, CIP2A siRNA (A), DKK-CIP2A (B), or DAPK siRNA (C) for 48 h & then exposed to GAS6 (100 ng/ml) for 30 min. PP2A activity & immunoblotting evaluations of DKK, CIP2A, pDAPK, & DAPK were performed. (D) RSC96 cells were incubated with GAS6 (100 ng/ml) for 30 min & co-immunoprecipitation between CIP2A, pDAPK & PP2A was evaluated. Immunoprecipitated PP2A activity was measured. Data are the mean \pm SD, & n = 3 for each time point. * p < 0.05, ** p < 0.01, vs. control. Image collected & cropped by CiteAb from the following publication

(<https://www.oncotarget.com/lookup/doi/10.18632/oncotarget.23978>), licensed under a CC-BY license. Not internally tested by Novus Biologicals.

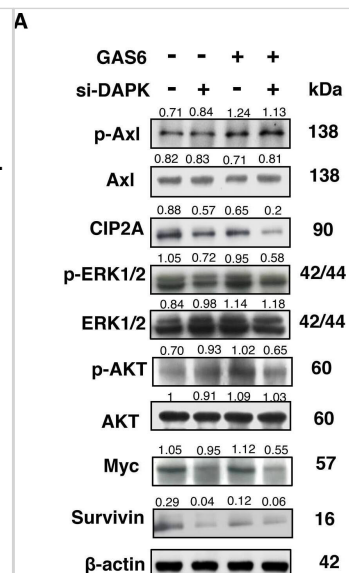


Western Blot: CIP2A Antibody [NB100-74663] - Characterization of CIP2A expression in a panel of normal human melanocytes (NHM) & melanoma cell lines. (A) Immunoblot analysis & (B) quantification of protein expression levels of CIP2A (C) CIP2A mRNA expression measured by qRT-PCR. NHM1 line was used as calibrator. (D) Cytoplasmic & nuclear expression of CIP2A in normal melanocytes, primary & metastatic melanoma cell lines assessed by immunoblot analysis & (E) by immunohistochemical staining. CIP2A, cancerous inhibitor of protein phosphatase 2A. Image collected & cropped by CiteAb from the following publication

(<https://pubmed.ncbi.nlm.nih.gov/25663244>), licensed under a CC-BY license. Not internally tested by Novus Biologicals.



Western Blot: CIP2A Antibody [NB100-74663] - GAS6 triggered Schwann cell proliferation primarily through CIP2A & DAPK(A) RSC96 cells were transfected with either control or DAPK siRNA for 48 h & then exposed to GAS6 (100 ng/ml) for 30 min. Immunoblotting evaluations of pAxl, Axl, CIP2A, DAPK, pERK1/2, ERK1/2, pAKT, AKT, Myc & Survivin. (B) RSC96 cells were transfected with either control or CIP2A siRNA for 48 h & then exposed to GAS6 (100 ng/ml) for 30 min. Immunoblotting evaluations of pAxl, Axl, DAPK, pDAPK, pERK1/2, ERK1/2, pAKT, AKT, Myc & Survivin. (C) DAPK or CIP2A was knocked down for 48 h then RSC96 cells were incubated with GAS6 (100 ng/ml) at the indicated hours. Cell viability was analysed via the WST-1 assay. Data are the mean \pm SD, & n = 3 for each time point. * p < 0.05, ** p < 0.01 vs. scramble. Image collected & cropped by CiteAb from the following publication (<https://www.oncotarget.com/lookup/doi/10.18632/oncotarget.23978>), licensed under a CC-BY license. Not internally tested by Novus Biologicals.



Publications

- Chuang H, Pan J, Cai Y et al. Reciprocal regulation of CIP2A and AR expression in prostate cancer cells Research Square 2022-07-25 [PMID: 36098827] (Flow Cytometry, Immunohistochemistry-Paraffin, Mouse)
- Chen YL, Tsai YT, Chao TT, Wu YN. DAPK and CIP2A are involved in GAS6/AXL-mediated Schwann cell proliferation in a rat model of bilateral cavernous nerve injury. *Oncotarget*. 2018-01-19 [PMID: 29464081] (IHC-P, Rat)
- Li Y, Cai X, Chen B et al. Overexpression of epithelial cell transforming 2 protein in colorectal carcinoma predicts a poor prognosis *Experimental and Therapeutic Medicine* 2017-09-19 [PMID: 29109759] (Human)
- Chen KF, Yen CC, Lin JK et al. Cancerous inhibitor of protein phosphatase 2A (CIP2A) is an independent prognostic marker in wild-type KRAS metastatic colorectal cancer after colorectal liver metastasectomy *BMC Cancer* 2015-04-21 [PMID: 25896895] (IHC-P, WB, Human)
- Wang Hsei-Wei, Yang Shung-Haur, Huang Guan-Da et al. Temsirolimus enhances the efficacy of cetuximab in colon cancer through a CIP2A-dependent mechanism. *J Cancer Res Clin Oncol*. 2014-02-04 [PMID: 24493623]
- Florenes VA, Emilsen E, Dong HP et al. Cellular localization of CIP2A determines its prognostic impact in superficial spreading and nodular melanoma *Cancer Med*. 2015-02-07 [PMID: 25663244] (IHC-P, Human)
- Kerosuo L, Fox H, Perala N et al. CIP2A increases self-renewal and is linked to Myc in neural progenitor cells. *Differentiation*. 2010-07-01 [PMID: 20447748] (FLOW, IHC-P, Mouse)
- He H, Wu G, Li W et al. CIP2A is highly expressed in hepatocellular carcinoma and predicts poor prognosis. *Diagn Mol Pathol*. 2012-09-01 [PMID: 22847158] (IHC-P, Human)
- Bockelman C. Role of CIP2A in carcinogenesis Thesis University of Helsinki, Haartman Institute, Patologia URN:ISBN:978-952-10-7579-7 . 2012-02-10 (IHC-P, Human, Mouse)
- Vaarala MH, Vaisanen MR, Ristimaki A. CIP2A expression is increased in prostate cancer *J Exp Clin Cancer Res* 2010-10-21 [PMID: 20964854] (IF/IHC, Human)
- Teng HW, Yang SH, Lin JK, Chen WS, Lin TC, Jiang JK, Yen CC, Li AF, Chen PC, Lan YT, Lin CC, Hsu YN, Wang HW, Chen KF. CIP2A Is a Predictor of Poor Prognosis in Colon Cancer. *J Gastrointest Surg*;16(5):1037-47. 2012-05-01 [PMID: 22328001] (IF/IHC, WB, Human)
- Bockelman C, Lassus H, Hemmes A et al. Prognostic role of CIP2A expression in serous ovarian cancer. *British Journal of Cancer*. 2011-09-06 [PMID: 21897396]



Novus Biologicals USA

10730 E. Briarwood Avenue
Centennial, CO 80112
USA
Phone: 303.730.1950
Toll Free: 1.888.506.6887
Fax: 303.730.1966
nb-customerservice@bio-techne.com

Bio-Techne Canada

21 Canmotor Ave
Toronto, ON M8Z 4E6
Canada
Phone: 905.827.6400
Toll Free: 855.668.8722
Fax: 905.827.6402
canada.inquires@bio-techne.com

Bio-Techne Ltd

19 Barton Lane
Abingdon Science Park
Abingdon, OX14 3NB, United Kingdom
Phone: (44) (0) 1235 529449
Free Phone: 0800 37 34 15
Fax: (44) (0) 1235 533420
info.EMEA@bio-techne.com

General Contact Information

www.novusbio.com
Technical Support: nb-technical@bio-techne.com
Orders: nb-customerservice@bio-techne.com
General: novus@novusbio.com

Products Related to NB100-74663

NBL1-12266	CIP2A Overexpression Lysate
NBP2-33376H	Blue Marker Antibody (6F4-F6) [HRP]
HAF008	Goat anti-Rabbit IgG Secondary Antibody [HRP]
NB7160	Goat anti-Rabbit IgG (H+L) Secondary Antibody [HRP]
NBP2-24891	Rabbit IgG Isotype Control

Limitations

This product is for research use only and is not approved for use in humans or in clinical diagnosis. Primary Antibodies are guaranteed for 1 year from date of receipt.

For more information on our 100% guarantee, please visit www.novusbio.com/guarantee

Earn gift cards/discounts by submitting a review: www.novusbio.com/reviews/submit/NB100-74663

Earn gift cards/discounts by submitting a publication using this product:
www.novusbio.com/publications

