

# Product Datasheet

## Astrin Antibody - BSA Free

### NB100-74638

Unit Size: 100 ul

Store at 4C. Do not freeze.

[www.novusbio.com](http://www.novusbio.com)



[technical@novusbio.com](mailto:technical@novusbio.com)

#### Publications: 10

Protocols, Publications, Related Products, Reviews, Research Tools and Images at:  
[www.novusbio.com/NB100-74638](http://www.novusbio.com/NB100-74638)

Updated 9/9/2025 v.20.1

Earn rewards for product  
reviews and publications.

Submit a publication at [www.novusbio.com/publications](http://www.novusbio.com/publications)

Submit a review at [www.novusbio.com/reviews/destination/NB100-74638](http://www.novusbio.com/reviews/destination/NB100-74638)



**NB100-74638**

Astrin Antibody - BSA Free

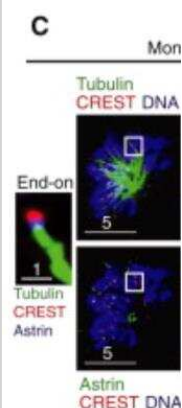
Product Information	
Unit Size	100 ul
Concentration	1.0 mg/ml
Storage	Store at 4C. Do not freeze.
Clonality	Polyclonal
Preservative	0.09% Sodium Azide
Isotype	IgG
Purity	Immunogen affinity purified
Buffer	Tris-Citrate/Phosphate (pH 7.0 - 8.0)

Product Description	
Description	Novus Biologicals Rabbit Astrin Antibody - BSA Free (NB100-74638) is a polyclonal antibody validated for use in ICC/IF and IP. Anti-Astrin Antibody: Cited in 9 publications. All Novus Biologicals antibodies are covered by our 100% guarantee.
Host	Rabbit
Gene ID	10615
Gene Symbol	SPAG5
Species	Human
Immunogen	The immunogen recognized by this antibody maps to a region between residue 1 and 50 of human astrin (mitotic spindle associated protein p126) using the numbering given in entry NP_006452.3 (GeneID 10615).

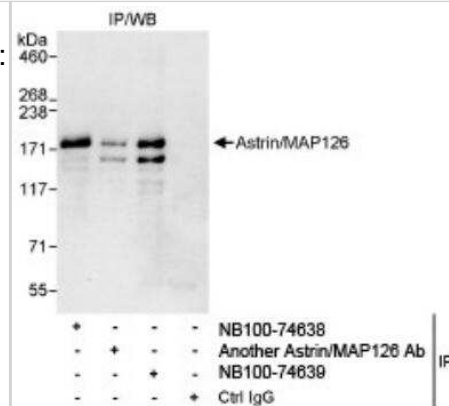
Product Application Details	
Applications	Immunocytochemistry/ Immunofluorescence, Immunoprecipitation, Western Blot (Negative)
Recommended Dilutions	Immunocytochemistry/ Immunofluorescence 1:10-1:2000, Immunoprecipitation 2-5 ug/mg lysate, Western Blot (Negative)
Application Notes	Not recommended for western blot. Use in ICC/IF reported in scientific literature (PMID: 23891108).

**Images**

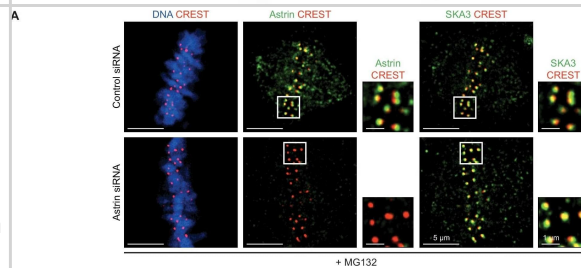
Immunocytochemistry/Immunofluorescence: Astrin Antibody [NB100-74638] - Immunofluorescence images of control or CENP-E siRNA-transfected cells treated with monastrol for 1 hr prior to fixation and immunostained with antibodies against Astrin and tubulin and CREST antisera and stained with DAPI for DNA. Cropped images are 3x magnified showing lateral kinetochores. Scale bars represent 5 um (insets, 2 um). Image collected and cropped by CiteAb from the following publication (<https://linkinghub.elsevier.com/retrieve/pii/S0960982213007653>), licensed under a CC-BY license.



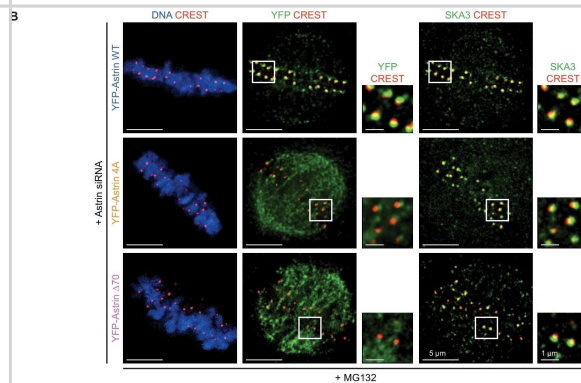
Immunoprecipitation: Astrin Antibody [NB100-74638] - Detection of Human Astrin/MAP126 by Western Blot of Immunoprecipitants. Samples: Whole cell lysate (1 mg for IP, 20% of IP loaded) from HeLa cells. Antibodies: Affinity purified rabbit anti-Astrin/MAP126 antibody NB100-74638 used for IP at 3 mcg/mg lysate. Astrin/MAP126 was also immunoprecipitated by another rabbit anti-Astrin/MAP126 antibody and NB100-74639, which recognize downstream epitopes. Detection: Chemiluminescence with an exposure time of 30 seconds.



Immunohistochemistry: Astrin Antibody [NB100-74638] - SKA3 localisation is not abrogated due to the lack of Astrin. (A) Representative deconvolved images show SKA3 enrichment at kinetochores of HeLa cells treated with Control or Astrin siRNA. Cells were arrested in metaphase using MG132 for 1 hr prior to fixation & were immunostained with antibodies against Astrin & SKA3 & CREST antiserum (to mark centromeres) & stained with DAPI for DNA. Cropped images show Astrin or SKA3 enrichment at kinetochores. (B) Representative images show SKA3 enrichment at kinetochores of HeLa cells treated with Astrin siRNA before transfection with eukaryotic protein expression vectors encoding YFP-Astrin (WT, 4A or  $\Delta 70$ , as indicated). Cells were arrested in metaphase using MG132 for 1 hr prior to fixation & were immunostained with antibodies against GFP (for detecting YFP-Astrin) & SKA3 & CREST antiserum & co-stained with DAPI for DNA. Cropped images show YFP-Astrin or SKA3 enrichment at kinetochores. Scale as indicated. Image collected & cropped by CiteAb from the following publication (<https://pubmed.ncbi.nlm.nih.gov/31808746>), licensed under a CC-BY license. Not internally tested by Novus Biologicals.



SKA3 localisation is not abrogated due to the lack of Astrin. (A) Representative deconvolved images show SKA3 enrichment at kinetochores of HeLa cells treated with Control or Astrin siRNA. Cells were arrested in metaphase using MG132 for 1 hr prior to fixation and were immunostained with antibodies against Astrin and SKA3 and CREST antiserum (to mark centromeres) and stained with DAPI for DNA. Cropped images show Astrin or SKA3 enrichment at kinetochores. (B) Representative images show SKA3 enrichment at kinetochores of HeLa cells treated with Astrin siRNA before transfection with eukaryotic protein expression vectors encoding YFP-Astrin (WT, 4A or  $\Delta 70$ , as indicated). Cells were arrested in metaphase using MG132 for 1 hr prior to fixation and were immunostained with antibodies against GFP (for detecting YFP-Astrin) and SKA3 and CREST antiserum and co-stained with DAPI for DNA. Cropped images show YFP-Astrin or SKA3 enrichment at kinetochores. Scale as indicated. Image collected and cropped by CiteAb from the following open publication (<https://pubmed.ncbi.nlm.nih.gov/31808746>), licensed under a CC-BY license. Not internally tested by Novus Biologicals.



## Publications

Schatton D, Di Pietro G, Szczepanowska K et al. CLUH controls astrin-1 expression to couple mitochondrial metabolism to cell cycle progression eLife 2022-05-13 [PMID: 35559794] (Immunocytochemistry/Immunofluorescence, Human)

Lau EO, Damiani D, Chehade G, Ruiz-Reig N et Al. DIAPH3 deficiency links microtubules to mitotic errors, defective neurogenesis, and brain dysfunction Elife 2021-04-26 [PMID: 33899739]

Scott SJ, Li X, Jammula S et al. Evidence that polyploidy in esophageal adenocarcinoma originates from mitotic slippage caused by defective chromosome attachments Cell Death Differ 2021-03-02 [PMID: 33649470]

Song X, Conti D, Shrestha RL Et al. Counteraction between Astrin-PP1 and Cyclin-B-CDK1 pathways protects chromosome-microtubule attachments independent of biorientation Nature communications 2021-12-01 [PMID: 34853300] (ICC/IF, Human)

Conti D, Gul P, Islam A, et al. Kinetochores attached to microtubule-ends are stabilised by Astrin bound PP1 to ensure proper chromosome segregation Elife 2019-12-06 [PMID: 31808746] (ICC/IF, Human)

Shrestha RL, Rossi A, Wangsa D et al. CENP-A overexpression promotes aneuploidy with karyotypic heterogeneity The Journal of cell biology 2021-04-05 [PMID: 33620383]

Gama Braga L, Cisneros AF, Mathieu MM et al. BUBR1 Pseudokinase Domain Promotes Kinetochore PP2A-B56 Recruitment, Spindle Checkpoint Silencing, and Chromosome Alignment Cell Rep 2020-11-17 [PMID: 33207204] (ICC/IF, Human)

### Details:

HeLa T-Rex and HeLa S3 cell lines

Gama Braga L The function of the pseudokinase domain of BUBR1 in mitosis. Thesis 2020-01-01

Shrestha RL, Conti D, Tamura N et al. Aurora-B kinase pathway controls the lateral to end-on conversion of kinetochore-microtubule attachments in human cells Nat Commun 2017-07-28 [PMID: 28751710] (ICC/IF, Human)

Shrestha RL, Draviam VM. Lateral to End-on Conversion of Chromosome-Microtubule Attachment Requires Kinesins CENP-E and MCAK. Curr Biol 2013-08-19 [PMID: 23891108] (ICC/IF, Human)





### **Novus Biologicals USA**

10730 E. Briarwood Avenue  
Centennial, CO 80112  
USA  
Phone: 303.730.1950  
Toll Free: 1.888.506.6887  
Fax: 303.730.1966  
nb-customerservice@bio-techne.com

### **Bio-Techne Canada**

21 Canmotor Ave  
Toronto, ON M8Z 4E6  
Canada  
Phone: 905.827.6400  
Toll Free: 855.668.8722  
Fax: 905.827.6402  
canada.inquires@bio-techne.com

### **Bio-Techne Ltd**

19 Barton Lane  
Abingdon Science Park  
Abingdon, OX14 3NB, United Kingdom  
Phone: (44) (0) 1235 529449  
Free Phone: 0800 37 34 15  
Fax: (44) (0) 1235 533420  
info.EMEA@bio-techne.com

### **General Contact Information**

www.novusbio.com  
Technical Support: nb-technical@bio-techne.com  
Orders: nb-customerservice@bio-techne.com  
General: novus@novusbio.com

### **Products Related to NB100-74638**

---

NBL1-16365	Astrin Overexpression Lysate
NBP2-33376H	Blue Marker Antibody (6F4-F6) [HRP]
HAF008	Goat anti-Rabbit IgG Secondary Antibody [HRP]
NB7160	Goat anti-Rabbit IgG (H+L) Secondary Antibody [HRP]
NBP2-24891	Rabbit IgG Isotype Control

---

### **Limitations**

This product is for research use only and is not approved for use in humans or in clinical diagnosis. Primary Antibodies are guaranteed for 1 year from date of receipt.

For more information on our 100% guarantee, please visit [www.novusbio.com/guarantee](http://www.novusbio.com/guarantee)

Earn gift cards/discounts by submitting a review: [www.novusbio.com/reviews/submit/NB100-74638](http://www.novusbio.com/reviews/submit/NB100-74638)

Earn gift cards/discounts by submitting a publication using this product:  
[www.novusbio.com/publications](http://www.novusbio.com/publications)

