

# Product Datasheet

## SREBP1 Antibody NB100-74542

Unit Size: 100ug

Store at -20C. Avoid freeze-thaw cycles.

[www.novusbio.com](http://www.novusbio.com)



[technical@novusbio.com](mailto:technical@novusbio.com)

### Publications: 1

Protocols, Publications, Related Products, Reviews, Research Tools and Images at:  
[www.novusbio.com/NB100-74542](http://www.novusbio.com/NB100-74542)

Updated 9/9/2025 v.20.1

Earn rewards for product  
reviews and publications.

Submit a publication at [www.novusbio.com/publications](http://www.novusbio.com/publications)

Submit a review at [www.novusbio.com/reviews/destination/NB100-74542](http://www.novusbio.com/reviews/destination/NB100-74542)



**NB100-74542****SREBP1 Antibody**

<b>Product Information</b>	
<b>Unit Size</b>	100ug
<b>Concentration</b>	1 mg/ml
<b>Storage</b>	Store at -20C. Avoid freeze-thaw cycles.
<b>Clonality</b>	Polyclonal
<b>Preservative</b>	0.05% Sodium Azide
<b>Isotype</b>	IgG
<b>Purity</b>	Immunogen affinity purified
<b>Buffer</b>	PBS with 1 mg/ml BSA

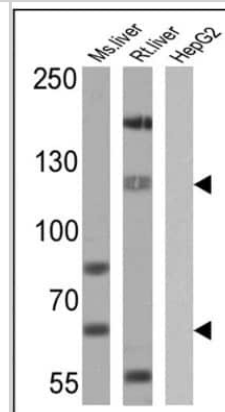
<b>Product Description</b>	
<b>Description</b>	Novus Biologicals Rabbit SREBP1 Antibody (NB100-74542) is a polyclonal antibody validated for use in IHC, WB and ICC/IF. Anti-SREBP1 Antibody: Cited in 1 publication. All Novus Biologicals antibodies are covered by our 100% guarantee.
<b>Host</b>	Rabbit
<b>Gene ID</b>	6720
<b>Gene Symbol</b>	SREBF1
<b>Species</b>	Human, Mouse, Rat
<b>Immunogen</b>	Synthetic peptide corresponding to residues M(32) L Q L I N N Q D S D F P G L F(47) of mouse SREBP 1.

<b>Product Application Details</b>	
<b>Applications</b>	Western Blot, Immunohistochemistry-Paraffin, Immunocytochemistry/Immunofluorescence, Immunohistochemistry
<b>Recommended Dilutions</b>	Western Blot 1:500 - 1:5000, Immunohistochemistry, Immunocytochemistry/Immunofluorescence 1:50 - 1:500, Immunohistochemistry-Paraffin 1:10-1:500
<b>Application Notes</b>	WB: Detects an approx. 68 and 120 kDa protein representing SREBP 1 in mouse and rat liver samples as well as rat kidney samples. A predominant band at ~68 kDa (active cleaved site) is seen and a band at ~120 kDa (inactive precursor) may not be seen or it may be diminished.

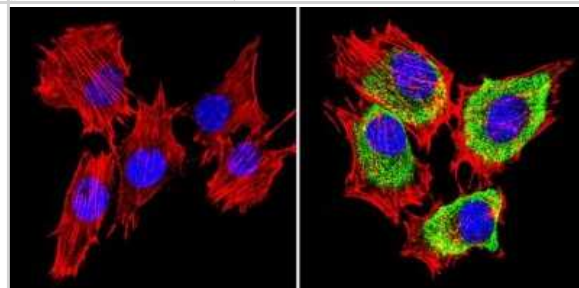


## Images

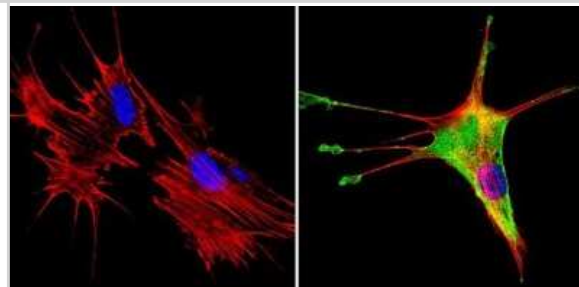
Western Blot: SREBP1 Antibody [NB100-74542] - Analysis of 25 ug of mouse liver (lane 1), rat liver (lane 2) and HepG2 (lane 3) cell lysates onto an SDS polyacrylamide gel.



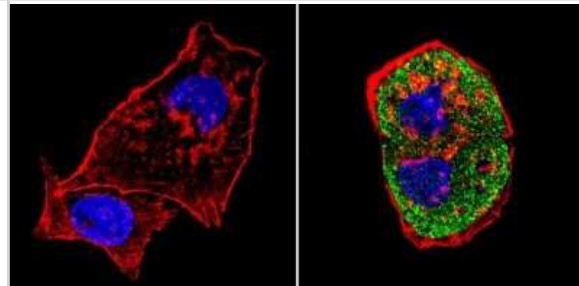
Immunocytochemistry/Immunofluorescence: SREBP1 Antibody [NB100-74542] - Analysis of SREBP1 (green) showing staining in the cytoplasm of C2C12 cells (right) compared to a negative control without primary antibody (left).



Immunocytochemistry/Immunofluorescence: SREBP1 Antibody [NB100-74542] - Analysis of SREBP1 (green) showing staining in the cytoplasm of NIH-3T3 cells (right) compared to a negative control without primary antibody (left).



Immunocytochemistry/Immunofluorescence: SREBP1 Antibody [NB100-74542] - Analysis of SREBP1 (green) showing staining in the cytoplasm of HepG2 cells (right) compared to a negative control without primary antibody (left).



## Publications

Dahlhoff C, Worsch S, Sailer M et al. Methyl-donor supplementation in obese mice prevents the progression of NAFLD, activates AMPK and decreases acyl-carnitine levels Mol Metab. 2014-08-01 [PMID: 25061561] (WB, Mouse)

### Details:

BHMT antibody used for WB on liver tissue lysates of eight week-old male C57BL/6NCrI mice subjected to the following dietary regimns - control, high-fat, , control/methyl-donor supplemented group/CMS and high fat methyl-donor supplemented/HFMS animals (Figure 4).





### **Novus Biologicals USA**

10730 E. Briarwood Avenue  
Centennial, CO 80112  
USA  
Phone: 303.730.1950  
Toll Free: 1.888.506.6887  
Fax: 303.730.1966  
nb-customerservice@bio-techne.com

### **Bio-Techne Canada**

21 Canmotor Ave  
Toronto, ON M8Z 4E6  
Canada  
Phone: 905.827.6400  
Toll Free: 855.668.8722  
Fax: 905.827.6402  
canada.inquires@bio-techne.com

### **Bio-Techne Ltd**

19 Barton Lane  
Abingdon Science Park  
Abingdon, OX14 3NB, United Kingdom  
Phone: (44) (0) 1235 529449  
Free Phone: 0800 37 34 15  
Fax: (44) (0) 1235 533420  
info.EMEA@bio-techne.com

### **General Contact Information**

www.novusbio.com  
Technical Support: nb-technical@bio-techne.com  
Orders: nb-customerservice@bio-techne.com  
General: novus@novusbio.com

### **Products Related to NB100-74542**

---

NBP2-33376H	Blue Marker Antibody (6F4-F6) [HRP]
HAF008	Goat anti-Rabbit IgG Secondary Antibody [HRP]
NB7160	Goat anti-Rabbit IgG (H+L) Secondary Antibody [HRP]
NBP2-24891	Rabbit IgG Isotype Control

---

### **Limitations**

This product is for research use only and is not approved for use in humans or in clinical diagnosis. Primary Antibodies are guaranteed for 1 year from date of receipt.

For more information on our 100% guarantee, please visit [www.novusbio.com/guarantee](http://www.novusbio.com/guarantee)

Earn gift cards/discounts by submitting a review: [www.novusbio.com/reviews/submit/NB100-74542](http://www.novusbio.com/reviews/submit/NB100-74542)

Earn gift cards/discounts by submitting a publication using this product:  
[www.novusbio.com/publications](http://www.novusbio.com/publications)

