

# Product Datasheet

## Lamin A + C Antibody (mab636) NB100-74451

Unit Size: 200uL

Store at -20C. Avoid freeze-thaw cycles.

[www.novusbio.com](http://www.novusbio.com)



[technical@novusbio.com](mailto:technical@novusbio.com)

### Publications: 7

Protocols, Publications, Related Products, Reviews, Research Tools and Images at:  
[www.novusbio.com/NB100-74451](http://www.novusbio.com/NB100-74451)

Updated 9/9/2025 v.20.1

Earn rewards for product  
reviews and publications.

Submit a publication at [www.novusbio.com/publications](http://www.novusbio.com/publications)

Submit a review at [www.novusbio.com/reviews/destination/NB100-74451](http://www.novusbio.com/reviews/destination/NB100-74451)



**NB100-74451**

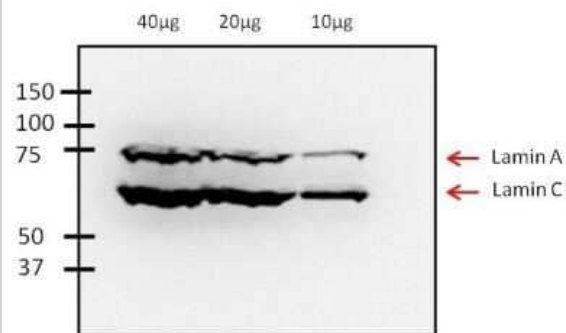
Lamin A + C Antibody (mab636)

<b>Product Information</b>	
<b>Unit Size</b>	200uL
<b>Concentration</b>	This product is unpurified. The exact concentration of antibody is not quantifiable.
<b>Storage</b>	Store at -20C. Avoid freeze-thaw cycles.
<b>Clonality</b>	Monoclonal
<b>Clone</b>	mab636
<b>Preservative</b>	0.05% Sodium Azide
<b>Isotype</b>	IgG2b
<b>Purity</b>	Unpurified
<b>Buffer</b>	Tissue culture supernatant
<b>Product Description</b>	
<b>Description</b>	Novus Biologicals Mouse Lamin A + C Antibody (mab636) (NB100-74451) is a monoclonal antibody validated for use in IHC, WB and ICC/IF. Anti-Lamin A + C Antibody: Cited in 7 publications. All Novus Biologicals antibodies are covered by our 100% guarantee.
<b>Host</b>	Mouse
<b>Gene ID</b>	4000
<b>Gene Symbol</b>	LMNA
<b>Species</b>	Human, Mouse, Rat, Porcine, Bovine
<b>Reactivity Notes</b>	Rat reactivity reported in scientific literature (PMID: 2209722). Mouse reactivity reported in scientific literature (PMID: 11373684).
<b>Marker</b>	Nuclear Envelope Marker
<b>Specificity/Sensitivity</b>	Detects lamin A/C from human, bovine and porcine samples.
<b>Immunogen</b>	Porcine lamin preparation.
<b>Product Application Details</b>	
<b>Applications</b>	Western Blot, Immunocytochemistry/ Immunofluorescence, Immunohistochemistry, Immunohistochemistry-Frozen
<b>Recommended Dilutions</b>	Western Blot 1:100 - 1:2000, Immunohistochemistry 1:100, Immunocytochemistry/ Immunofluorescence 1:100, Immunohistochemistry-Frozen 1:100
<b>Application Notes</b>	WB: Detects an approx. 70 and 65 kDa proteins corresponding to lamin A and C, respectively, from HeLa cell extract.

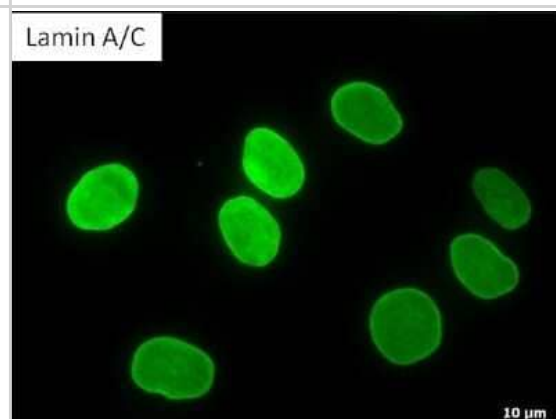


## Images

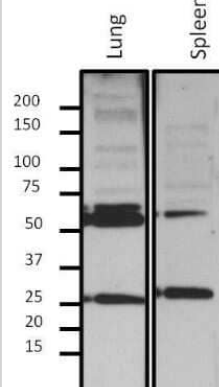
Western Blot: Lamin A + C Antibody (mab636) [NB100-74451] - Analysis of various amounts of Human fibroblast whole cell lysate.



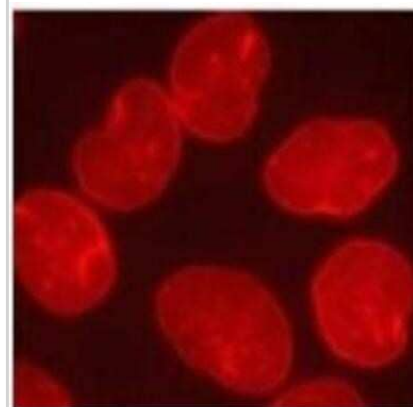
Immunocytochemistry/Immunofluorescence: Lamin A + C Antibody (mab636) [NB100-74451] - Analysis of Lamin A/C (green) in Human fibroblast cells. Methanol fixed cells were permeabilized with 0.1% Triton X-100 in TBS for 10 minutes at room temperature. Cells were then blocked with 5% normal goat serum for 15 minutes at room temperature. Cells were then probed with a mouse monoclonal antibody recognizing Lamin A/C, at a dilution of 1:200 for at least 1 hour at room temperature. Cells were then washed with PBS and incubated with DyLight 488 goat-anti-mouse secondary antibody at a dilution of 1:400 for 30 minutes at room temperature.



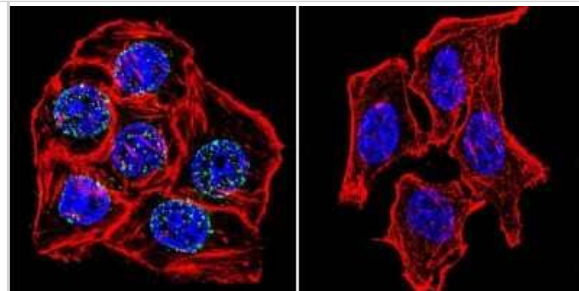
Western Blot: Lamin A + C Antibody (mab636) [NB100-74451] - Analysis of 10ug nuclear extract from fractionated mouse tissue lysate.



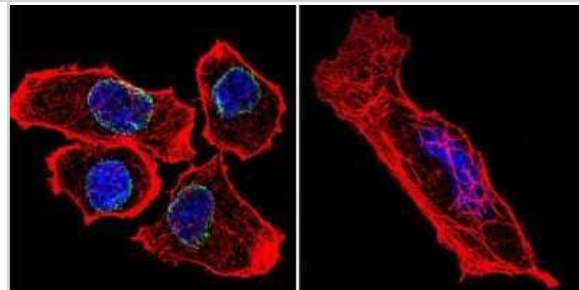
Immunocytochemistry/Immunofluorescence: Lamin A + C Antibody (mab636) [NB100-74451] - Analysis of Lamin A/C (red) in HeLa cells at high magnification.



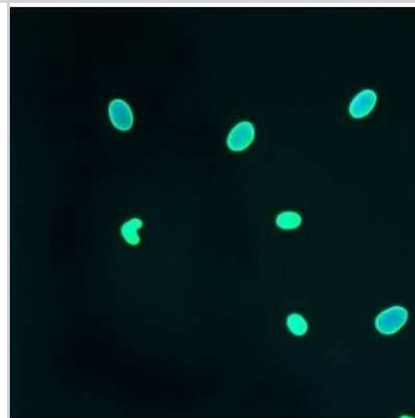
Immunocytochemistry/Immunofluorescence: Lamin A + C Antibody (mab636) [NB100-74451] - Analysis of Lamin A/C using Lamin A/C Monoclonal Antibody (mab636) shows staining in HeLa Cells. Lamin A/C (green), F-Actin staining with Phalloidin (red) and nuclei with DAPI (blue) is shown. Cells were grown on chamber slides and fixed with formaldehyde prior to staining. Cells were probed without (control) or with an antibody recognizing Lamin A/C at a dilution of 1:20 over night at 4C, washed with PBS and incubated with a DyLight-488 conjugated.



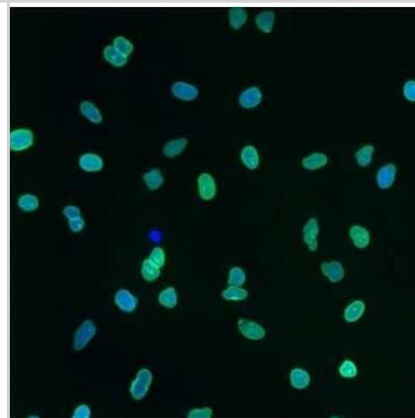
Immunocytochemistry/Immunofluorescence: Lamin A + C Antibody (mab636) [NB100-74451] - Analysis of Lamin A/C using Lamin A/C Monoclonal Antibody (mab636) shows staining in U251 Cells. Lamin A/C (green), F-Actin staining with Phalloidin (red) and nuclei with DAPI (blue) is shown. Cells were grown on chamber slides and fixed with formaldehyde prior to staining. Cells were probed without (control) or with an antibody recognizing Lamin A/C at a dilution of 1:200 over night at 4C, washed with PBS and incubated with a DyLight-488 conjugated.



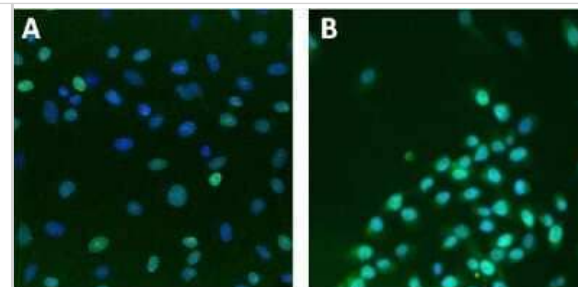
Immunocytochemistry/Immunofluorescence: Lamin A + C Antibody (mab636) [NB100-74451] - Analysis of Lamin A/C in HMVEC Cells.



Immunocytochemistry/Immunofluorescence: Lamin A + C Antibody (mab636) [NB100-74451] - Analysis of Lamin A/C in A549 Cells.



Immunocytochemistry/Immunofluorescence: Lamin A + C Antibody (mab636) [NB100-74451] - Analysis of Lamin A/C (green) in untreated U2-OS cells (A) or HeLa cells (B). Formalin fixed cells were permeabilized with 0.1% Triton X-100 in TBS for 10 minutes at room temperature. Cells were then blocked with 0.3% BSA for 15 minutes at room temperature. Cells were then probed with a mouse monoclonal antibody recognizing Lamin A/C, at a dilution of 1:100 for at least 1 hour at room temperature. Cells were then washed with PBS and incubated with DyLight 488 goat-anti-mouse secondary antibody at a dilution of 1:400 for 30 minutes at room temperature. Nuclei (blue) were stained with Hoechst 33342 dye.



## Publications

Geng J, Kang Z, Sun Q et al. Microtubule Assists Actomyosin to Regulate Cell Nuclear Mechanics and Chromatin Accessibility Research (Wash D C) 2023-02-21 [PMID: 37040508] (Immunocytochemistry/ Immunofluorescence)

Yang J, Wang P, Zhang Y, Zhang M et Al. Photo-tunable hydrogels reveal cellular sensing of rapid rigidity changes through the accumulation of mechanical signaling molecules Cell Stem Cell 2024-10-22 [PMID: 39437791]

Chen G, Gao X, Chen J et al. Actomyosin Activity and Piezo1 Activity Synergistically Drive Urinary System Fibroblast Activation Advanced science (Weinheim, Baden-Wurttemberg, Germany) 2023-10-22 [PMID: 37867255] (WB, ICC/IF, Human)

Su S, Qiu Y, Shi X et al. Phase Separation Microparticles as a Three-Dimensional Cell Culture System To Promote Stem Cell Expansion Biomacromolecules 2023-04-19 [PMID: 37073825]

Sun Q, Pei F, Zhang M et al. Curved Nanofiber Network Induces Cellular Bridge Formation to Promote Stem Cell Mechanotransduction Advanced science (Weinheim, Baden-Wurttemberg, Germany) 2022-11-16 [PMID: 36382560] (ICC/IF, Human)

Details:

Dilution used in ICC 1:200

Zhang M, Sun Q, Liu Y et al. Controllable ligand spacing stimulates cellular mechanotransduction and promotes stem cell osteogenic differentiation on soft hydrogels Biomaterials 2020-11-23 [PMID: 33260094] (ICC/IF, Human)

Details:

Human mesenchymal stem cells underwent immunofluorescence analysis after seeding into soft hydrogel.

Hadden WJ, Young JL, Holle AW et al. Stem cell migration and mechanotransduction on linear stiffness gradient hydrogels. Proc. Natl. Acad. Sci. U.S.A. 2017-05-15 [PMID: 28507138] (ICC/IF)



### **Novus Biologicals USA**

10730 E. Briarwood Avenue  
Centennial, CO 80112  
USA  
Phone: 303.730.1950  
Toll Free: 1.888.506.6887  
Fax: 303.730.1966  
nb-customerservice@bio-techne.com

### **Bio-Techne Canada**

21 Canmotor Ave  
Toronto, ON M8Z 4E6  
Canada  
Phone: 905.827.6400  
Toll Free: 855.668.8722  
Fax: 905.827.6402  
canada.inquires@bio-techne.com

### **Bio-Techne Ltd**

19 Barton Lane  
Abingdon Science Park  
Abingdon, OX14 3NB, United Kingdom  
Phone: (44) (0) 1235 529449  
Free Phone: 0800 37 34 15  
Fax: (44) (0) 1235 533420  
info.EMEA@bio-techne.com

### **General Contact Information**

www.novusbio.com  
Technical Support: nb-technical@bio-techne.com  
Orders: nb-customerservice@bio-techne.com  
General: novus@novusbio.com

### **Products Related to NB100-74451**

---

NBP2-33376H	Blue Marker Antibody (6F4-F6) [HRP]
HAF007	Goat anti-Mouse IgG Secondary Antibody [HRP]
NB7539	Goat anti-Mouse IgG (H+L) Secondary Antibody [HRP]
NBP2-27231	Mouse IgG2b Isotype Control (MPC-11)

---

### **Limitations**

This product is for research use only and is not approved for use in humans or in clinical diagnosis. Primary Antibodies are guaranteed for 1 year from date of receipt.

For more information on our 100% guarantee, please visit [www.novusbio.com/guarantee](http://www.novusbio.com/guarantee)

Earn gift cards/discounts by submitting a review: [www.novusbio.com/reviews/submit/NB100-74451](http://www.novusbio.com/reviews/submit/NB100-74451)

Earn gift cards/discounts by submitting a publication using this product:  
[www.novusbio.com/publications](http://www.novusbio.com/publications)

