

Product Datasheet

gamma Tubulin Antibody (4D11) NB100-74421

Unit Size: 100ug

Store at -20C. Avoid freeze-thaw cycles.

www.novusbio.com



technical@novusbio.com

Publications: 1

Protocols, Publications, Related Products, Reviews, Research Tools and Images at:
www.novusbio.com/NB100-74421

Updated 9/9/2025 v.20.1

Earn rewards for product
reviews and publications.

Submit a publication at www.novusbio.com/publications

Submit a review at www.novusbio.com/reviews/destination/NB100-74421



NB100-74421

gamma Tubulin Antibody (4D11)

| Product Information | |
|---------------------|--|
| Unit Size | 100ug |
| Concentration | 1 mg/ml |
| Storage | Store at -20C. Avoid freeze-thaw cycles. |
| Clonality | Monoclonal |
| Clone | 4D11 |
| Preservative | 0.05% Sodium Azide |
| Isotype | IgG2b |
| Purity | Protein G purified |
| Buffer | PBS with 1 mg/ml BSA |

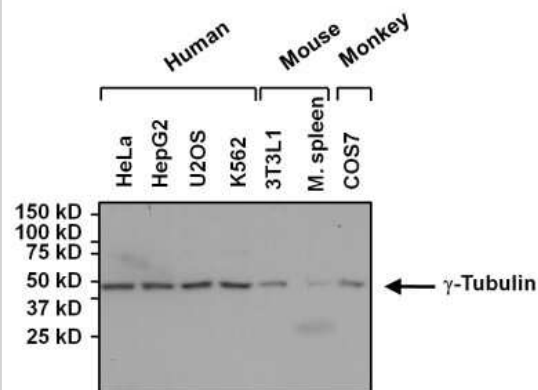
| Product Description | |
|-------------------------|--|
| Description | Novus Biologicals Mouse gamma Tubulin Antibody (4D11) (NB100-74421) is a monoclonal antibody validated for use in IHC, WB, ICC/IF and IP. Anti-gamma Tubulin Antibody: Cited in 1 publication. All Novus Biologicals antibodies are covered by our 100% guarantee. |
| Host | Mouse |
| Gene ID | 7283 |
| Gene Symbol | TUBG1 |
| Species | Human, Mouse, Rat, Primate |
| Reactivity Notes | Please note that this antibody is reactive to Mouse and derived from the same host, Mouse. Additional Mouse on Mouse blocking steps may be required for IHC and ICC experiments. Please contact Technical Support for more information. |
| Marker | Centrosome Marker |
| Specificity/Sensitivity | gamma Tubulin (4D11) |
| Immunogen | Recombinant protein containing residues A A T R P D Y I S W G T Q E Q of human gamma Tubulin. |

| Product Application Details | |
|-----------------------------|---|
| Applications | Western Blot, Immunohistochemistry-Paraffin, Immunocytochemistry/Immunofluorescence, Immunohistochemistry, Immunoprecipitation |
| Recommended Dilutions | Western Blot 1:1000, Immunohistochemistry 1:200, Immunocytochemistry/Immunofluorescence 1:50, Immunoprecipitation 1:10 - 1:500, Immunohistochemistry-Paraffin 1:200 |

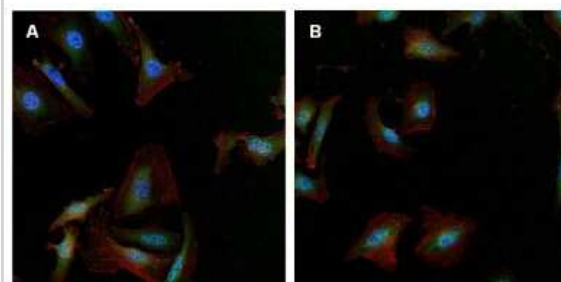


Images

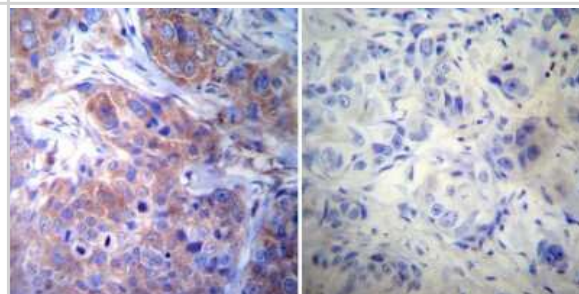
Western Blot: gamma Tubulin Antibody (4D11) [NB100-74421] - Proteins were transferred to a PVDF membrane and blocked with 5% Milk/TBST for at least 1 hour. Membranes were probed with a mouse monoclonal antibody recognizing g-Tubulin at a dilution of 1:1000 overnight at 4C on a rocking platform. Membranes were washed in TBS-0.1%Tween 20 and probed with a goat anti-mouse-HRP secondary antibody at a dilution of 1:20,000 for at least one hour. Membranes were washed and chemiluminescent detection performed.



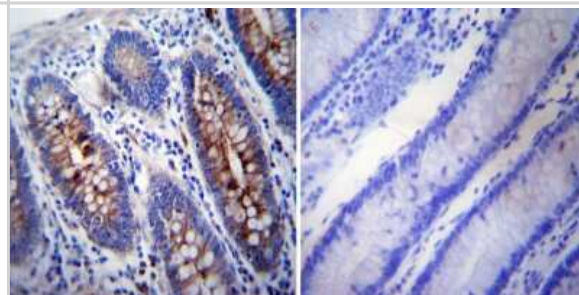
Immunocytochemistry/Immunofluorescence: gamma Tubulin Antibody (4D11) [NB100-74421] - Analysis of g-Tubulin using anti-g-Tubulin monoclonal antibody (shown in green) in HeLa (A) and U2-OS cells (B).



Immunohistochemistry-Paraffin: gamma Tubulin Antibody (4D11) [NB100-74421] - Both normal and cancer biopsies of deparaffinized human Breast carcinoma tissue.



Immunohistochemistry-Paraffin: gamma Tubulin Antibody (4D11) [NB100-74421] - Both normal and cancer biopsies of deparaffinized human Colon tissue.



Publications

Perdreau-Dahl H, Progida C et al. Sjogren syndrome/scleroderma autoantigen 1 is a direct Tankyrase binding partner in cancer cells. *Commun Biol* 2020-03-13 [PMID: 32170109] (WB, Human)



Novus Biologicals USA

10730 E. Briarwood Avenue
Centennial, CO 80112
USA
Phone: 303.730.1950
Toll Free: 1.888.506.6887
Fax: 303.730.1966
nb-customerservice@bio-techne.com

Bio-Techne Canada

21 Canmotor Ave
Toronto, ON M8Z 4E6
Canada
Phone: 905.827.6400
Toll Free: 855.668.8722
Fax: 905.827.6402
canada.inquires@bio-techne.com

Bio-Techne Ltd

19 Barton Lane
Abingdon Science Park
Abingdon, OX14 3NB, United Kingdom
Phone: (44) (0) 1235 529449
Free Phone: 0800 37 34 15
Fax: (44) (0) 1235 533420
info.EMEA@bio-techne.com

General Contact Information

www.novusbio.com
Technical Support: nb-technical@bio-techne.com
Orders: nb-customerservice@bio-techne.com
General: novus@novusbio.com

Products Related to NB100-74421

| | |
|-------------|--|
| NBP2-33376H | Blue Marker Antibody (6F4-F6) [HRP] |
| HAF007 | Goat anti-Mouse IgG Secondary Antibody [HRP] |
| NB7539 | Goat anti-Mouse IgG (H+L) Secondary Antibody [HRP] |
| NBP2-27231 | Mouse IgG2b Isotype Control (MPC-11) |

Limitations

This product is for research use only and is not approved for use in humans or in clinical diagnosis. Primary Antibodies are guaranteed for 1 year from date of receipt.

For more information on our 100% guarantee, please visit www.novusbio.com/guarantee

Earn gift cards/discounts by submitting a review: www.novusbio.com/reviews/submit/NB100-74421

Earn gift cards/discounts by submitting a publication using this product:
www.novusbio.com/publications

