

Product Datasheet

CRALBP Antibody (B2) NB100-74392

Unit Size: 100ug

Store at -20C. Avoid freeze-thaw cycles.

www.novusbio.com



technical@novusbio.com

Publications: 14

Protocols, Publications, Related Products, Reviews, Research Tools and Images at:
www.novusbio.com/NB100-74392

Updated 9/9/2025 v.20.1

Earn rewards for product reviews and publications.

Submit a publication at www.novusbio.com/publications

Submit a review at www.novusbio.com/reviews/destination/NB100-74392



NB100-74392

CRALBP Antibody (B2)

Product Information	
Unit Size	100ug
Concentration	1 mg/ml
Storage	Store at -20C. Avoid freeze-thaw cycles.
Clonality	Monoclonal
Clone	B2
Preservative	0.05% Sodium Azide
Isotype	IgG1
Purity	Protein A purified
Buffer	PBS with 1 mg/ml BSA
Product Description	
Description	Novus Biologicals Mouse CRALBP Antibody (B2) (NB100-74392) is a monoclonal antibody validated for use in IHC, WB, ELISA, Flow, ICC/IF, Simple Western and IP. Anti-CRALBP Antibody: Cited in 13 publications. All Novus Biologicals antibodies are covered by our 100% guarantee.
Host	Mouse
Gene ID	6017
Gene Symbol	RLBP1
Species	Human, Mouse, Rat, Porcine, Bovine, Primate
Reactivity Notes	Use in Porcine reported in scientific literature (PMID:35327471). Please note that this antibody is reactive to Mouse and derived from the same host, Mouse. Additional Mouse on Mouse blocking steps may be required for IHC and ICC experiments. Please contact Technical Support for more information.
Immunogen	Human recombinant CRALBP.
Product Application Details	
Applications	Western Blot, Simple Western, Immunohistochemistry-Paraffin, ELISA, Flow Cytometry, Immunocytochemistry/ Immunofluorescence, Immunohistochemistry, Immunohistochemistry-Frozen, Immunoprecipitation
Recommended Dilutions	Western Blot 0.02 ug/ml, Simple Western, Flow Cytometry 1:10-1:1000, ELISA 1:100 - 1:2000, Immunohistochemistry 1:10 - 1:500, Immunocytochemistry/ Immunofluorescence 1 ug/ml, Immunoprecipitation 1:10 - 1:500, Immunohistochemistry-Paraffin 1:10 - 1:500, Immunohistochemistry-Frozen 1 ug/ml
Application Notes	ELISA, IP, WB reported in the literature (PMID: 1715867) ICC reported in the literature (PMID:11909957) See Simple Western Antibody Database for Simple Western validation: Tested in iPSC-RPE, separated by Size



Images

Western Blot: CRALBP Antibody (B2) [NB100-74392] - Analysis of CRALBP antibody on human cell.

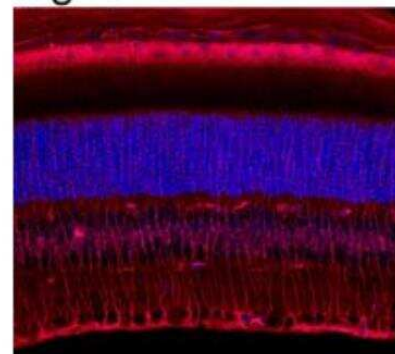
Fig. 2

CRALBP

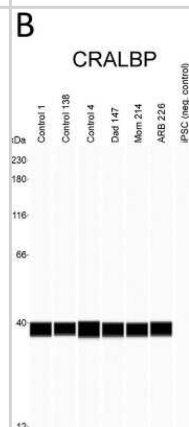


Immunocytochemistry/Immunofluorescence: CRALBP Antibody (B2) [NB100-74392] - Immunostaining of CRALBP in frozen mouse retina sections.

Fig. 1



Simple Western: CRALBP Antibody (B2) [NB100-74392] - iPSC-RPE from all donors express RPE marker proteins. Unlike iPSCs, all iPSC-RPE lines showed robust expression of CRALBP. Image collected and cropped by CiteAb from the following publication (<https://pubmed.ncbi.nlm.nih.gov/29540715/>) licensed under a CC-BY license.



Publications

Farkas MH, Skelton LA, Ramachandra-Rao S et al. Morphological, biochemical, and transcriptomic characterization of iPSC-derived human RPE cells from normal and Smith-Lemli-Opitz syndrome patients *Molecular Vision* 2022-01-01 [PMID: 36540063] (IHC-P, Human)

Details:

1:100 dilution IHC-P

Lytvynchuk L, Ebbert A, Studenovska H et al. Subretinal Implantation of Human Primary RPE Cells Cultured on Nanofibrous Membranes in Minipigs *Biomedicines* 2022-03-14 [PMID: 35327471] (IF/IHC, Porcine)

AD Marmorstei, AA Johnson, LA Bachman, C Andrews-Pf, T Knudsen, BJ Gilles, M Hill, JK Gandhi, LY Marmorstei, JS Pulido Mutant Best1 Expression and Impaired Phagocytosis in an iPSC Model of Autosomal Recessive Bestrophinopathy *Sci Rep*, 2018-03-14;8(1):4487. 2018-03-14 [PMID: 29540715] (Simple Western, Human)

Heller J, Heintz T, Kwok J et al. Immunochemical analysis of the integrin expression in retinal pigment epithelial cells *bioRxiv* 2020-06-28 (ICC/IF, Rat)

Navneet S, Cui X, Zhao J et al. Excess homocysteine upregulates the NRF2-antioxidant pathway in retinal Muller glial cells. *Exp Eye Res*. [PMID: 29608906] (ICC/IF, Mouse)

Golestaneh Nady, Chu Yi, Xiao Yang-Yu et al. Dysfunctional autophagy in RPE, a contributing factor in age-related macular degeneration. *Cell Death & Disease* 2017-01-05 [PMID: 28055007] (ICC/IF, Human)

Navneet, S;Zhao, J;Wang, J;Mysona, B;Barwick, S;Ammal Kaidery, N;Saul, A;Kaddour-Djebbar, I;Bollag, WB;Thomas, B;Bollinger, KE;Smith, SB; Hyperhomocysteinemia-induced death of retinal ganglion cells: The role of Muller glial cells and NRF2 *Redox Biol* 2019-04-11 [PMID: 31026769] (IF/IHC, Mouse)

Biesecker Kr, Srienc Ai, Shimoda Am et al. Glial Cell Calcium Signaling Mediates Capillary Regulation of Blood Flow in the Retina. *J. Neurosci*. 2016-09-07 [PMID: 27605617] (IHC-P)

Heller JP, Kwok JC, Vecino E et al. A Method for the Isolation and Culture of Adult Rat Retinal Pigment Epithelial (RPE) Cells to Study Retinal Diseases. *Front Cell Neurosci* 2015-01-01 [PMID: 26635529] (Rat)

Lu B, Malcuit C, Wang S et al. Long-term safety and function of RPE from human embryonic stem cells in preclinical models of macular degeneration. *Stem Cells* 2009-09-01 [PMID: 19521979] (WB, Human)

Budhu AS, Noy N. Direct channeling of retinoic acid between cellular retinoic acid-binding protein II and retinoic acid receptor sensitizes mammary carcinoma cells to retinoic acid-induced growth arrest. *Mol Cell Biol*. 2002-04-01 [PMID: 11909957]

Crabb JW, Gaur VP, Garwin GG et al. Topological and epitope mapping of the cellular retinaldehyde-binding protein from retina. *J Biol Chem*. 1991-09-01 [PMID: 1715867]

More publications at <http://www.novusbio.com/NB100-74392>





Novus Biologicals USA

10730 E. Briarwood Avenue
Centennial, CO 80112
USA
Phone: 303.730.1950
Toll Free: 1.888.506.6887
Fax: 303.730.1966
nb-customerservice@bio-techne.com

Bio-Techne Canada

21 Canmotor Ave
Toronto, ON M8Z 4E6
Canada
Phone: 905.827.6400
Toll Free: 855.668.8722
Fax: 905.827.6402
canada.inquires@bio-techne.com

Bio-Techne Ltd

19 Barton Lane
Abingdon Science Park
Abingdon, OX14 3NB, United Kingdom
Phone: (44) (0) 1235 529449
Free Phone: 0800 37 34 15
Fax: (44) (0) 1235 533420
info.EMEA@bio-techne.com

General Contact Information

www.novusbio.com
Technical Support: nb-technical@bio-techne.com
Orders: nb-customerservice@bio-techne.com
General: novus@novusbio.com

Products Related to NB100-74392

NBL1-15383	CRALBP Overexpression Lysate
NBP2-33376H	Blue Marker Antibody (6F4-F6) [HRP]
HAF007	Goat anti-Mouse IgG Secondary Antibody [HRP]
NB7539	Goat anti-Mouse IgG (H+L) Secondary Antibody [HRP]
NBP1-97005-0.5mg	Mouse IgG1 Isotype Control (MG1)

Limitations

This product is for research use only and is not approved for use in humans or in clinical diagnosis. Primary Antibodies are guaranteed for 1 year from date of receipt.

For more information on our 100% guarantee, please visit www.novusbio.com/guarantee

Earn gift cards/discounts by submitting a review: www.novusbio.com/reviews/submit/NB100-74392

Earn gift cards/discounts by submitting a publication using this product:
www.novusbio.com/publications

