

# Product Datasheet

## AP2 alpha Antibody (3B5) NB100-74359

Unit Size: 100uL

Store at -20C. Avoid freeze-thaw cycles.

[www.novusbio.com](http://www.novusbio.com)



[technical@novusbio.com](mailto:technical@novusbio.com)

### Publications: 5

Protocols, Publications, Related Products, Reviews, Research Tools and Images at:  
[www.novusbio.com/NB100-74359](http://www.novusbio.com/NB100-74359)

Updated 9/9/2025 v.20.1

### Earn rewards for product reviews and publications.

Submit a publication at [www.novusbio.com/publications](http://www.novusbio.com/publications)

Submit a review at [www.novusbio.com/reviews/destination/NB100-74359](http://www.novusbio.com/reviews/destination/NB100-74359)



**NB100-74359****AP2 alpha Antibody (3B5)**

<b>Product Information</b>	
<b>Unit Size</b>	100uL
<b>Concentration</b>	Concentrations vary lot to lot. See vial label for concentration. If unlisted please contact technical services.
<b>Storage</b>	Store at -20C. Avoid freeze-thaw cycles.
<b>Clonality</b>	Monoclonal
<b>Clone</b>	3B5
<b>Preservative</b>	0.05% Sodium Azide
<b>Isotype</b>	IgG2b
<b>Purity</b>	Protein G purified
<b>Buffer</b>	PBS with 1 mg/ml BSA
<b>Target Molecular Weight</b>	48 kDa

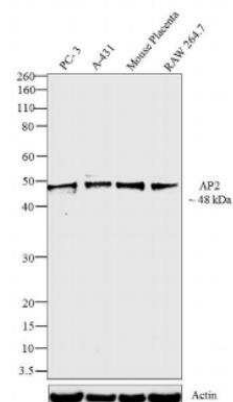
<b>Product Description</b>	
<b>Description</b>	Novus Biologicals Mouse AP2 alpha Antibody (3B5) (NB100-74359) is a monoclonal antibody validated for use in IHC, WB, ICC/IF and IP. Anti-AP2 alpha Antibody: Cited in 4 publications. All Novus Biologicals antibodies are covered by our 100% guarantee.
<b>Host</b>	Mouse
<b>Gene ID</b>	7020
<b>Gene Symbol</b>	TFAP2A
<b>Species</b>	Human, Mouse, Chicken
<b>Reactivity Notes</b>	Please note that this antibody is reactive to Mouse and derived from the same host, Mouse. Additional Mouse on Mouse blocking steps may be required for IHC and ICC experiments. Please contact Technical Support for more information.
<b>Specificity/Sensitivity</b>	AP-2 (3B5)
<b>Immunogen</b>	N-terminus of human AP2a.

<b>Product Application Details</b>	
<b>Applications</b>	Western Blot, Immunohistochemistry-Paraffin, Immunocytochemistry/Immunofluorescence, Immunohistochemistry, Immunohistochemistry-Frozen, Immunoprecipitation
<b>Recommended Dilutions</b>	Western Blot 1:50 - 1:200, Immunohistochemistry 1:50, Immunocytochemistry/Immunofluorescence 1:50 - 1:500, Immunoprecipitation 1:100 - 1:250, Immunohistochemistry-Paraffin 1:50, Immunohistochemistry-Frozen 1:50
<b>Application Notes</b>	In WB: Detects a 45 - 50 kDa protein representing AP-2. Block with BSA only (not milk). IHC-Fr usage was reported in scientific literature (PMID: 24996922).

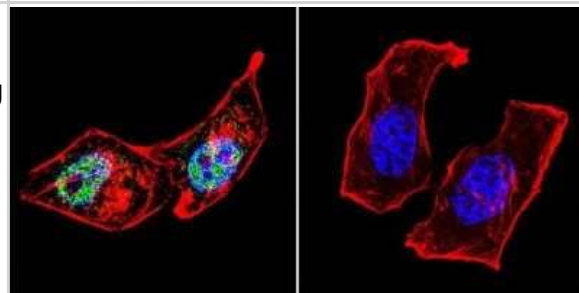


## Images

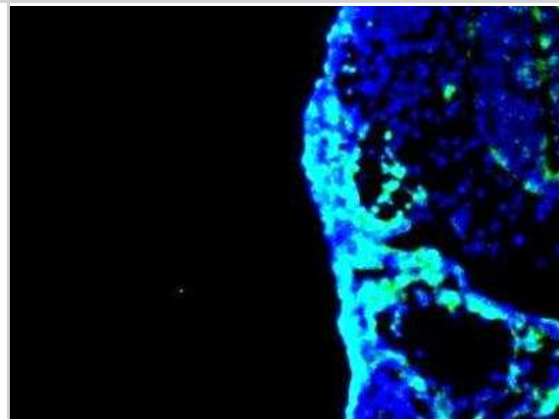
Western Blot: AP2 alpha Antibody (3B5) [NB100-74359] - Analysis was performed on whole cell extracts (30 ug lysate) of PC-3 (Lane1), A-431 (Lane2), Mouse Placenta (Lane3) and RAW 264.7 (Lane5).



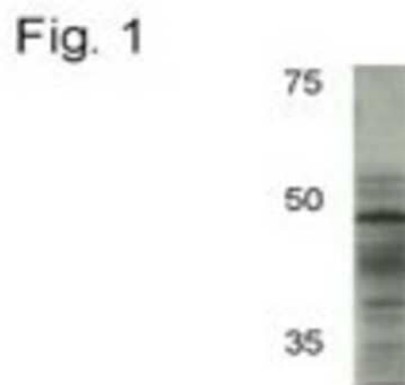
Immunocytochemistry/Immunofluorescence: AP2 alpha Antibody (3B5) [NB100-74359] - Analysis of AP2 using Anti-AP2 Monoclonal Antibody (3B5) shows staining in Hela Cells. AP2 staining (green), F-Actin staining with Phalloidin (red) and nuclei with DAPI (blue) is shown. Cells were grown on chamber slides and fixed with formaldehyde prior to staining. Cells were probed without (control) or with or an antibody recognizing AP2 at a dilution of 1:100 over night at 4C, washed with PBS and incubated with a DyLight-488 conjugated secondary antibody. Images were taken at 60X magnification.



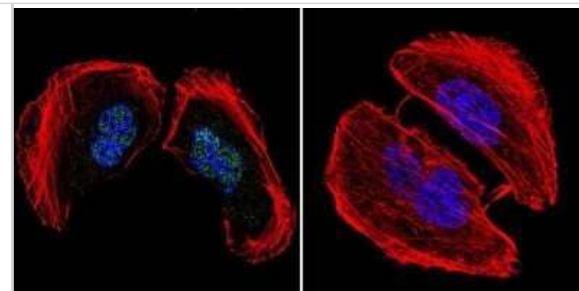
Immunohistochemistry-Frozen: AP2 alpha Antibody (3B5) [NB100-74359] - AP2alpha staining on an E9.5 mouse pharyngeal mesoderm region. IHC-Fr image submitted by a verified customer review.



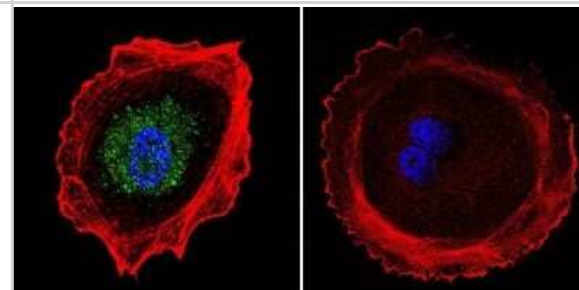
Western Blot: AP2 alpha Antibody (3B5) [NB100-74359] - Figure 1 illustrates Western blot detection of AP-2 from MCF7 cell lysate.



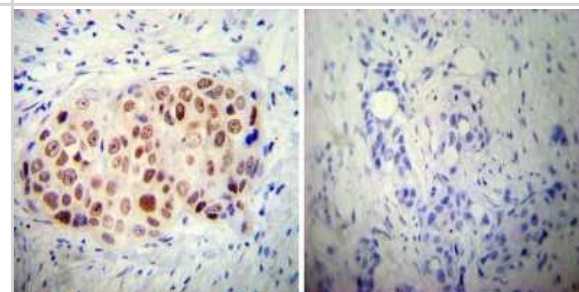
Immunocytochemistry/Immunofluorescence: AP2 alpha Antibody (3B5) [NB100-74359] - Analysis of AP2 using Anti-AP2 Monoclonal Antibody (3B5) shows staining in U251 Cells. AP2 staining (green), F-Actin staining with Phalloidin (red) and nuclei with DAPI (blue) is shown.



Immunocytochemistry/Immunofluorescence: AP2 alpha Antibody (3B5) [NB100-74359] - Analysis of AP2 using Anti-AP2 Monoclonal Antibody (3B5) shows staining in MCF-7 Cells. AP2 staining (green), F-Actin staining with Phalloidin (red) and nuclei with DAPI (blue) is shown.



Immunohistochemistry-Paraffin: AP2 alpha Antibody (3B5) [NB100-74359] - Immunohistochemistry was performed on cancer biopsies of deparaffinized Human breast carcinoma tissue.



## Publications

Gharibi B, Inge O, Rodriguez-Hernandez I et al. Post-gastrulation amnioids as a stem cell-derived model of human extra-embryonic development. *Cell* 2025-05-09 [PMID: 40378847]

Kim S, Morgunova E, Naqvi S et al. DNA-guided transcription factor cooperativity shapes face and limb mesenchyme *bioRxiv* 2023-06-02 [PMID: 37398193] (Immunohistochemistry-Frozen, Avian - Chicken)

Kim S, Morgunova E, Naqvi S et al. DNA-guided transcription factor cooperativity shapes face and limb mesenchyme *Cell* 2024-01-17 [PMID: 38262408]

Wilson NR, Olm-Shipman AJ, Acevedo DS et al. SPECC1L deficiency results in increased adherens junction stability and reduced cranial neural crest cell delamination. *Sci Rep.* 2016-01-20 [PMID: 26787558] (ICC/IF, Mouse)

Milgrom-Hoffman M, Michailovici I, Ferrara N et al. Endothelial cells regulate neural crest and second heart field morphogenesis. *Biol Open* 2014-07-04 [PMID: 24996922] (IHC-Fr, Chicken)

### Details:

Antibody used as cranial neural crest marker in IHC-Fr application on cryo-sections of controls and Flk1 cKO mutants chick embryos (Fig. 2M/R). Staining also performed on Mesp1Cre Flk1 control and mutant embryos/explants (Fig 3C/G).



### **Novus Biologicals USA**

10730 E. Briarwood Avenue  
Centennial, CO 80112  
USA

Phone: 303.730.1950

Toll Free: 1.888.506.6887

Fax: 303.730.1966

[nb-customerservice@bio-techne.com](mailto:nb-customerservice@bio-techne.com)

### **Bio-Techne Canada**

21 Canmotor Ave  
Toronto, ON M8Z 4E6  
Canada

Phone: 905.827.6400

Toll Free: 855.668.8722

Fax: 905.827.6402

[canada.inquires@bio-techne.com](mailto:canada.inquires@bio-techne.com)

### **Bio-Techne Ltd**

19 Barton Lane  
Abingdon Science Park  
Abingdon, OX14 3NB, United Kingdom

Phone: (44) (0) 1235 529449

Free Phone: 0800 37 34 15

Fax: (44) (0) 1235 533420

[info.EMEA@bio-techne.com](mailto:info.EMEA@bio-techne.com)

### **General Contact Information**

[www.novusbio.com](http://www.novusbio.com)

Technical Support: [nb-technical@bio-techne.com](mailto:nb-technical@bio-techne.com)

Orders: [nb-customerservice@bio-techne.com](mailto:nb-customerservice@bio-techne.com)

General: [novus@novusbio.com](mailto:novus@novusbio.com)

### **Products Related to NB100-74359**

---

NBP2-33376H	Blue Marker Antibody (6F4-F6) [HRP]
HAF007	Goat anti-Mouse IgG Secondary Antibody [HRP]
NB7539	Goat anti-Mouse IgG (H+L) Secondary Antibody [HRP]
NBP2-27231	Mouse IgG2b Isotype Control (MPC-11)

---

### **Limitations**

This product is for research use only and is not approved for use in humans or in clinical diagnosis. Primary Antibodies are guaranteed for 1 year from date of receipt.

For more information on our 100% guarantee, please visit [www.novusbio.com/guarantee](http://www.novusbio.com/guarantee)

Earn gift cards/discounts by submitting a review: [www.novusbio.com/reviews/submit/NB100-74359](http://www.novusbio.com/reviews/submit/NB100-74359)

Earn gift cards/discounts by submitting a publication using this product:  
[www.novusbio.com/publications](http://www.novusbio.com/publications)

