

Product Datasheet

LYVE-1 Antibody - BSA Free NB100-726

Unit Size: 0.1 ml

Store at 4C short term. Aliquot and store at -20C long term. Avoid freeze-thaw cycles.

www.novusbio.com



technical@novusbio.com

Protocols, Publications, Related Products, Reviews, Research Tools and Images at:
www.novusbio.com/NB100-726

Updated 9/9/2025 v.20.1

Earn rewards for product
reviews and publications.

Submit a publication at www.novusbio.com/publications

Submit a review at www.novusbio.com/reviews/destination/NB100-726



NB100-726

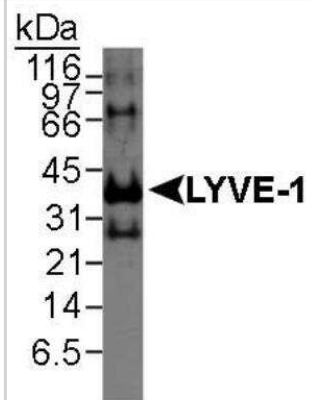
LYVE-1 Antibody - BSA Free

Product Information	
Unit Size	0.1 ml
Concentration	1.0 mg/ml
Storage	Store at 4C short term. Aliquot and store at -20C long term. Avoid freeze-thaw cycles.
Clonality	Polyclonal
Preservative	0.05% Sodium Azide
Isotype	IgG
Purity	Immunogen affinity purified
Buffer	Tris-Glycine, 0.15M NaCl
Target Molecular Weight	35 kDa
Product Description	
Description	Novus Biologicals Rabbit LYVE-1 Antibody - BSA Free (NB100-726) is a polyclonal antibody validated for use in WB. All Novus Biologicals antibodies are covered by our 100% guarantee.
Host	Rabbit
Gene ID	10894
Gene Symbol	LYVE1
Species	Human, Mouse
Marker	Lymphatic Vessel Marker
Immunogen	This LYVE-1 Antibody was developed against a synthetic peptide made to a C-terminal portion of the human LYVE1 protein sequence (between residues 250-322). [UniProt# Q9Y5Y7]
Product Application Details	
Applications	Western Blot
Recommended Dilutions	Western Blot 2 ug/mL
Application Notes	In Western blot a band is observed at ~45 kDa. This antibody has been tested on human recombinant LYVE-1 and mouse spleen lysate. For Immunohistochemistry we recommend NB100-725. The observed molecular weight of the protein may vary from the listed predicted molecular weight due to post translational modifications, post translation cleavages, relative charges, and other experimental factors.

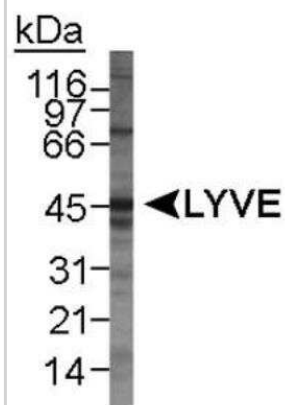


Images

Western Blot: LYVE-1 Antibody [NB100-726] - Detection of LYVE-1 in recombinant human protein using NB 100-726. ECL detection overnight.



Western Blot: LYVE-1 Antibody [NB100-726] - Detection of LYVE-1 in mouse spleen lysate using NB 100-726. ECL detection overnight.



Procedures

Western Blot Protocol for LYVE1 Antibody (NB100-726)

LYVE-1 Antibody:

Western Blot Protocol

1. Perform SDS-PAGE (4-12%) on samples to be analyzed, loading 50 ug of total protein per lane.
2. Transfer proteins to Nitrocellulose according to the instructions provided by the manufacturer of the transfer apparatus.
3. Stain the blot using ponceau S for 1-2 minutes to access the transfer of proteins onto the nitrocellulose membrane. Rinse the blot in water to remove excess stain and mark the lane locations and locations of molecular weight markers using a pencil.
4. Rinse the blot in TBS for approximately 5 minutes.
5. Block the membrane using 5% non-fat dry milk + 0.5% BSA in TBS for 1 hour.
6. Dilute the rabbit anti-LYVE-1 primary antibody (NB 100-726) in blocking buffer and incubate 2 hours at room temperature.
7. Wash the membrane in water for 5 minutes and apply the diluted rabbit-IgG HRP-conjugated secondary antibody in blocking buffer (as per manufacturer's instructions) and incubate 1 hour at room temperature.
8. Wash the blot in TBS containing 0.05-0.1% Tween-20 for 10-20 minutes.
9. Wash the blot in type I water for an additional 10-20 minutes (this step can be repeated as required to reduce background).
10. Apply the detection reagent of choice in accordance with the manufacturer's instructions (Amersham's ECL is the standard reagent used at Novus Biologicals).

Note: Tween-20 can be added to the blocking buffer at a final concentration of 0.05-0.2%, provided it does not interfere with antibody-antigen binding.





Novus Biologicals USA

10730 E. Briarwood Avenue
Centennial, CO 80112
USA
Phone: 303.730.1950
Toll Free: 1.888.506.6887
Fax: 303.730.1966
nb-customerservice@bio-techne.com

Bio-Techne Canada

21 Canmotor Ave
Toronto, ON M8Z 4E6
Canada
Phone: 905.827.6400
Toll Free: 855.668.8722
Fax: 905.827.6402
canada.inquires@bio-techne.com

Bio-Techne Ltd

19 Barton Lane
Abingdon Science Park
Abingdon, OX14 3NB, United Kingdom
Phone: (44) (0) 1235 529449
Free Phone: 0800 37 34 15
Fax: (44) (0) 1235 533420
info.EMEA@bio-techne.com

General Contact Information

www.novusbio.com
Technical Support: nb-technical@bio-techne.com
Orders: nb-customerservice@bio-techne.com
General: novus@novusbio.com

Products Related to NB100-726

NB820-59670	Mouse Spleen Whole Tissue Lysate (Adult Whole Normal)
NB100-726PEP	LYVE-1 Antibody Blocking Peptide
NBP2-33376H	Blue Marker Antibody (6F4-F6) [HRP]
HAF008	Goat anti-Rabbit IgG Secondary Antibody [HRP]
NB7160	Goat anti-Rabbit IgG (H+L) Secondary Antibody [HRP]
NBP2-24891	Rabbit IgG Isotype Control

Limitations

This product is for research use only and is not approved for use in humans or in clinical diagnosis. Primary Antibodies are guaranteed for 1 year from date of receipt.

For more information on our 100% guarantee, please visit www.novusbio.com/guarantee

Earn gift cards/discounts by submitting a review: www.novusbio.com/reviews/submit/NB100-726

Earn gift cards/discounts by submitting a publication using this product:
www.novusbio.com/publications



