

# Product Datasheet

## Chymase/CMA1/Mast Cell Chymase Antibody (CC1) NB100-693

Unit Size: 0.5 ml

Store at 4C. Do not freeze.

[www.novusbio.com](http://www.novusbio.com)



[technical@novusbio.com](mailto:technical@novusbio.com)

### Publications: 2

Protocols, Publications, Related Products, Reviews, Research Tools and Images at:  
[www.novusbio.com/NB100-693](http://www.novusbio.com/NB100-693)

Updated 9/9/2025 v.20.1

Earn rewards for product  
reviews and publications.

Submit a publication at [www.novusbio.com/publications](http://www.novusbio.com/publications)

Submit a review at [www.novusbio.com/reviews/destination/NB100-693](http://www.novusbio.com/reviews/destination/NB100-693)



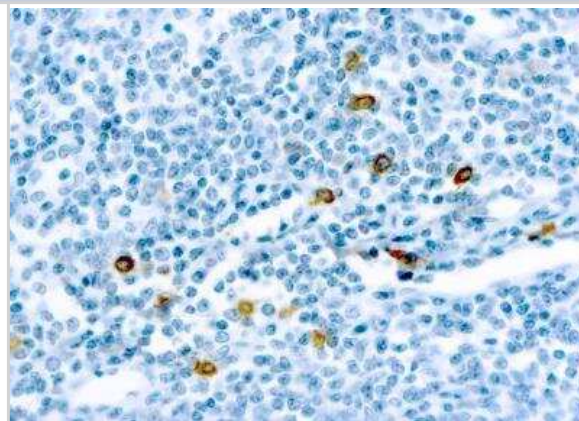
**NB100-693****Chymase/CMA1/Mast Cell Chymase Antibody (CC1)**

<b>Product Information</b>	
<b>Unit Size</b>	0.5 ml
<b>Concentration</b>	Please see the vial label for concentration. If unlisted please contact technical services.
<b>Storage</b>	Store at 4C. Do not freeze.
<b>Clonality</b>	Monoclonal
<b>Clone</b>	CC1
<b>Preservative</b>	0.05% Sodium Azide
<b>Isotype</b>	IgG1
<b>Purity</b>	Protein A or G purified
<b>Buffer</b>	PBS (pH 7.4), 0.2% BSA, Tween-20
<b>Product Description</b>	
<b>Description</b>	Novus Biologicals Mouse Chymase/CMA1/Mast Cell Chymase Antibody (CC1) (NB100-693) is a monoclonal antibody validated for use in IHC. Anti-Chymase/CMA1/Mast Cell Chymase Antibody: Cited in 2 publications. All Novus Biologicals antibodies are covered by our 100% guarantee.
<b>Host</b>	Mouse
<b>Gene ID</b>	1215
<b>Gene Symbol</b>	CMA1
<b>Species</b>	Human
<b>Specificity/Sensitivity</b>	This reacts with mast cells distributed in skin, synovium, lung and heart.
<b>Immunogen</b>	BALB/C mice were injected with a purified human skin chymase.
<b>Product Application Details</b>	
<b>Applications</b>	Immunohistochemistry-Paraffin, Immunohistochemistry
<b>Recommended Dilutions</b>	Immunohistochemistry 1:50-1:100, Immunohistochemistry-Paraffin 1:50-1:100
<b>Application Notes</b>	IHC-P: recommended pretreatment of citrate buffer, pH 6.0. Recommended incubation time of 30 min at RT.

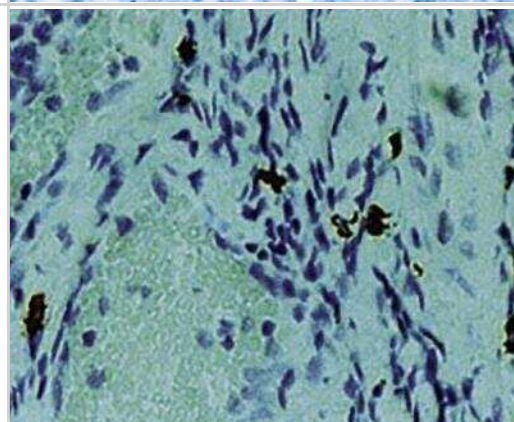


## Images

Immunohistochemistry: Chymase/CMA1/Mast Cell Chymase Antibody (CC1) [NB100-693] - Staining of a human tonsil cross section



Immunohistochemistry-Paraffin: Chymase/CMA1/Mast Cell Chymase Antibody (CC1) [NB100-693] - Formalin fixed paraffin embedded human tonsil stained with Mast Cell Chymase antibody.



## Publications

Kallionpaa Ra, Ahramo K, Martikkala E Et Al. Mast Cells in Human Cutaneous Neurofibromas: Density, Subtypes, and Association with Clinical Features in Neurofibromatosis 1 *Dermatology* (Basel, Switzerland) 2021-07-08 [PMID: 34237737] (IF/IHC)

Hsieh, FH et al. Human airway epithelial cell determinants of survival functional phenotype for primary human mast cells. *PNAS*. 102:14380-14385. 2005-01-01 [PMID: 16186496]



### **Novus Biologicals USA**

10730 E. Briarwood Avenue  
Centennial, CO 80112  
USA  
Phone: 303.730.1950  
Toll Free: 1.888.506.6887  
Fax: 303.730.1966  
nb-customerservice@bio-techne.com

### **Bio-Techne Canada**

21 Canmotor Ave  
Toronto, ON M8Z 4E6  
Canada  
Phone: 905.827.6400  
Toll Free: 855.668.8722  
Fax: 905.827.6402  
canada.inquires@bio-techne.com

### **Bio-Techne Ltd**

19 Barton Lane  
Abingdon Science Park  
Abingdon, OX14 3NB, United Kingdom  
Phone: (44) (0) 1235 529449  
Free Phone: 0800 37 34 15  
Fax: (44) (0) 1235 533420  
info.EMEA@bio-techne.com

### **General Contact Information**

www.novusbio.com  
Technical Support: nb-technical@bio-techne.com  
Orders: nb-customerservice@bio-techne.com  
General: novus@novusbio.com

### **Products Related to NB100-693**

---

NBL1-09293	Chymase/CMA1/Mast Cell Chymase Overexpression Lysate
HAF007	Goat anti-Mouse IgG Secondary Antibody [HRP]
NB7539	Goat anti-Mouse IgG (H+L) Secondary Antibody [HRP]
NBP1-97005-0.5mg	Mouse IgG1 Isotype Control (MG1)

---

### **Limitations**

This product is for research use only and is not approved for use in humans or in clinical diagnosis. Primary Antibodies are guaranteed for 1 year from date of receipt.

For more information on our 100% guarantee, please visit [www.novusbio.com/guarantee](http://www.novusbio.com/guarantee)

Earn gift cards/discounts by submitting a review: [www.novusbio.com/reviews/submit/NB100-693](http://www.novusbio.com/reviews/submit/NB100-693)

Earn gift cards/discounts by submitting a publication using this product:  
[www.novusbio.com/publications](http://www.novusbio.com/publications)

