

# Product Datasheet

## alpha Tubulin Antibody (DM1A) [Alexa Fluor® 647] NB100-690AF647

Unit Size: 0.1 ml

Store at 4C in the dark.

[www.novusbio.com](http://www.novusbio.com)



[technical@novusbio.com](mailto:technical@novusbio.com)

### Publications: 1

Protocols, Publications, Related Products, Reviews, Research Tools and Images at:  
[www.novusbio.com/NB100-690AF647](http://www.novusbio.com/NB100-690AF647)

Updated 11/11/2025 v.20.1

Earn rewards for product  
reviews and publications.

Submit a publication at [www.novusbio.com/publications](http://www.novusbio.com/publications)

Submit a review at [www.novusbio.com/reviews/destination/NB100-690AF647](http://www.novusbio.com/reviews/destination/NB100-690AF647)



**NB100-690AF647**

alpha Tubulin Antibody (DM1A) [Alexa Fluor® 647]

Product Information	
Unit Size	0.1 ml
Concentration	Please see the vial label for concentration. If unlisted please contact technical services.
Storage	Store at 4C in the dark.
Clonality	Monoclonal
Clone	DM1A
Preservative	0.05% Sodium Azide
Isotype	IgG1 Kappa
Conjugate	Alexa Fluor 647
Purity	Protein G purified
Buffer	50mM Sodium Borate

Product Description	
Host	Mouse
Gene ID	7846
Gene Symbol	TUBA1A
Species	Human, Mouse, Rat, Porcine, Avian, Bovine, Canine, Chicken, Chinese Hamster, Drosophila, Fungi, Guinea Pig, Goat, Hamster, Parasite, Monkey, Primate, Rabbit, Xenopus, Yeast
Reactivity Notes	Use in Mouse reported in scientific literature (PMID:34871568) Use in Mouse reported in scientific literature (PMID:34533563). Yeast reactivity reported in scientific literature (PMID: 25126732). Goat reactivity reported in scientific literature (PMID:31805146). Will likely react with all mammals.
Marker	Microtubule Marker
Specificity/Sensitivity	This alpha Tubulin Antibody (DM1A) does not cross-react with beta Tubulin.
Immunogen	This alpha Tubulin Antibody (DM1A) was developed against native chicken brain microtubules.
Notes	Alexa Fluor (R) products are provided under an intellectual property license from Life Technologies Corporation. The purchase of this product conveys to the buyer the non-transferable right to use the purchased product and components of the product only in research conducted by the buyer (whether the buyer is an academic or for-profit entity). The sale of this product is expressly conditioned on the buyer not using the product or its components, or any materials made using the product or its components, in any activity to generate revenue, which may include, but is not limited to use of the product or its components: (i) in manufacturing; (ii) to provide a service, information, or data in return for payment; (iii) for therapeutic, diagnostic or prophylactic purposes; or (iv) for resale, regardless of whether they are resold for use in research. For information on purchasing a license to this product for purposes other than as described above, contact Life Technologies Corporation, 5791 Van Allen Way, Carlsbad, CA 92008 USA or <a href="mailto:outlicensing@lifetech.com">outlicensing@lifetech.com</a> . This conjugate is made on demand. Actual recovery may vary from the stated volume of this product. The volume will be greater than or equal to the unit size stated on the datasheet.

**Product Application Details**

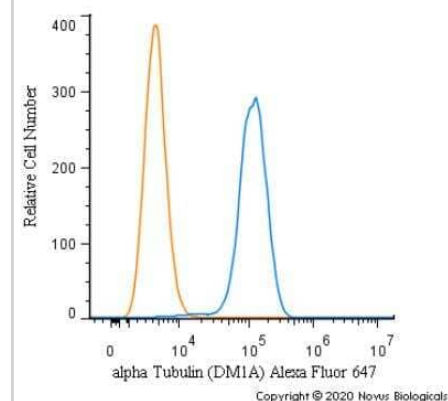
<b>Applications</b>	Western Blot, Immunohistochemistry-Paraffin, Flow Cytometry, Flow (Intracellular), Immunocytochemistry/ Immunofluorescence, Immunohistochemistry, Immunohistochemistry-Frozen, Immunomicroscopy, Immunoprecipitation, CyTOF-ready
<b>Recommended Dilutions</b>	Western Blot, Flow Cytometry, Immunohistochemistry, Immunocytochemistry/ Immunofluorescence, Immunoprecipitation, Immunohistochemistry-Paraffin, Immunohistochemistry-Frozen, Immunomicroscopy, Flow (Intracellular), CyTOF-ready
<b>Application Notes</b>	Optimal dilution of this antibody should be experimentally determined.

## Images

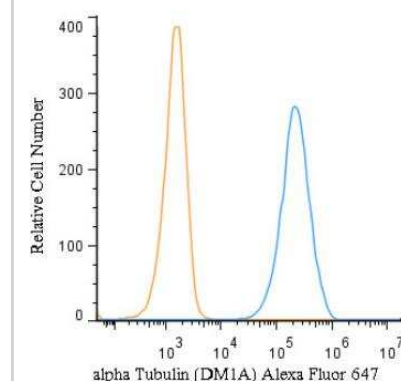
**Immunocytochemistry/Immunofluorescence:** alpha Tubulin Antibody (DM1A) [Alexa Fluor® 647] [NB100-690AF647] - Mouse MS1 cells were fixed in 4% paraformaldehyde for 10 minutes and permeabilized in 0.05% Triton X-100 in PBS for 5 minutes. The cells were incubated with alpha Tubulin Antibody [DM1A] conjugated to Alexa Fluor 647 (NB100-690AF647) at 2 ug/ml for 1 hour at room temperature. Nuclei were counterstained with DAPI (Blue). Cells were imaged using a 100X objective and digitally deconvolved.



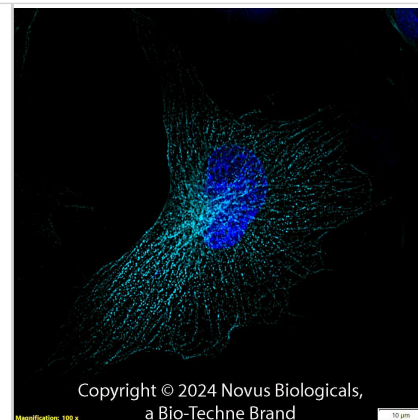
**Flow Cytometry:** alpha Tubulin Antibody (DM1A) [Alexa Fluor® 647] [NB100-690AF647] - An intracellular stain was performed on HeLa cells with alpha Tubulin [DM1A] Antibody NB100-690AF647 (blue) and a matched isotype control (orange). Cells were fixed with 4% PFA and then permeabilized with 0.1% saponin. Cells were incubated in an antibody dilution of 2.5 ug/mL for 30 minutes at room temperature. Both antibodies were conjugated to Alexa Fluor 647.



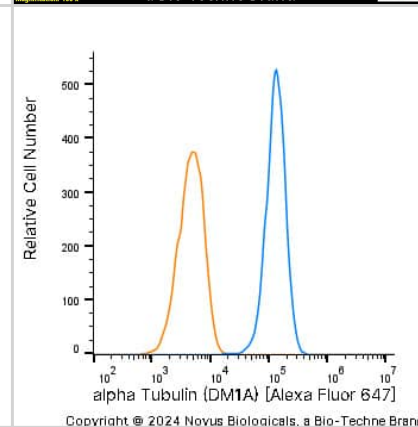
**Flow (Intracellular):** alpha Tubulin Antibody (DM1A) [Alexa Fluor 647] [NB100-690AF647] - An intracellular stain was performed on U-937 cells with alpha Tubulin Antibody (DM1A) NB100-690AF647 (blue) and a matched isotype control (orange). Cells were fixed with 4% PFA and then permeabilized with 0.1% saponin. Cells were incubated in an antibody dilution of 2.5 ug/mL for 30 minutes at room temperature. Both antibodies were conjugated to Alexa Fluor 647



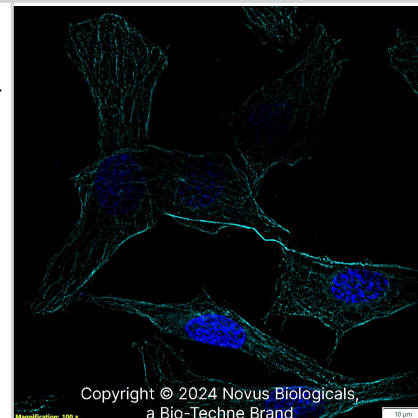
Alpha Tubulin (DM1A) was detected in immersion fixed U-251 MG human glioblastoma cell line using Mouse anti-alpha Tubulin (DM1A) Protein-G purified Monoclonal Antibody conjugated to Alexa Fluor® 647 (Catalog # NB100-690AF647) (light blue) at 2 µg/mL overnight at 4C. Cells were counterstained with DAPI (dark blue). Cells were imaged using 100X objective and digitally deconvolved.



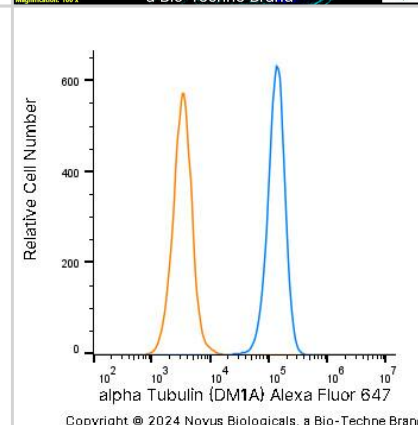
U-251 MG human glioblastoma cell line was stained with Mouse anti-alpha Tubulin (DM1A) Protein-G purified Monoclonal Antibody conjugated to Alexa Fluor® 647 (Catalog # NB100-690AF647, blue histogram) or matched control antibody (orange histogram).



Alpha Tubulin (DM1A) was detected in immersion FR rat skin fibroblast cell line using Mouse anti- Alpha Tubulin (DM1A) Protein G Purified Monoclonal Antibody conjugated to Alexa Fluor® 647 (Catalog # NB100-690AF647) (light blue) at 2 µg/mL overnight at 4C. Cells were counterstained with DAPI (dark blue). Cells were imaged using a 100X objective and digitally deconvolved.



An intracellular stain was performed on A431 human skin carcinoma cell line using Mouse anti-alpha Tubulin (DM1A) Protein-G purified Monoclonal Antibody conjugated to Alexa Fluor® 647 (Catalog # NB100-690AF647, blue histogram) or matched control antibody (orange histogram) at 2.5 µg/mL for 30 minutes at RT.



## Publications

Fazel M, Wester MJ, Schodt DJ et al. High-precision estimation of emitter positions using Bayesian grouping of localizations Nature communications 2022-11-22 [PMID: 36418347]



### **Novus Biologicals USA**

10730 E. Briarwood Avenue  
Centennial, CO 80112  
USA  
Phone: 303.730.1950  
Toll Free: 1.888.506.6887  
Fax: 303.730.1966  
nb-customerservice@bio-techne.com

### **Bio-Techne Canada**

21 Canmotor Ave  
Toronto, ON M8Z 4E6  
Canada  
Phone: 905.827.6400  
Toll Free: 855.668.8722  
Fax: 905.827.6402  
canada.inquires@bio-techne.com

### **Bio-Techne Ltd**

19 Barton Lane  
Abingdon Science Park  
Abingdon, OX14 3NB, United Kingdom  
Phone: (44) (0) 1235 529449  
Free Phone: 0800 37 34 15  
Fax: (44) (0) 1235 533420  
info.EMEA@bio-techne.com

### **General Contact Information**

www.novusbio.com  
Technical Support: nb-technical@bio-techne.com  
Orders: nb-customerservice@bio-techne.com  
General: novus@novusbio.com

### **Products Related to NB100-690AF647**

---

NBP1-43319AF647	Mouse IgG1 Kappa Isotype Control (P3.6.2.8.1) [Alexa Fluor® 647]
NB100-690AF700	alpha Tubulin Antibody (DM1A) [Alexa Fluor® 700]
H00007846-Q01-10ug	Recombinant Human alpha Tubulin GST (N-Term) Protein
DPLG70	PLA2G7/PAF-AH/Lp-PLA2 [HRP]

---

### **Limitations**

This product is for research use only and is not approved for use in humans or in clinical diagnosis. Primary Antibodies are guaranteed for 1 year from date of receipt.

For more information on our 100% guarantee, please visit [www.novusbio.com/guarantee](http://www.novusbio.com/guarantee)

Earn gift cards/discounts by submitting a review: [www.novusbio.com/reviews/submit/NB100-690AF647](http://www.novusbio.com/reviews/submit/NB100-690AF647)

Earn gift cards/discounts by submitting a publication using this product:  
[www.novusbio.com/publications](http://www.novusbio.com/publications)

