

Product Datasheet

alpha Tubulin Antibody (DM1A) NB100-690

Unit Size: 0.1 ml

Store at 4C short term. Aliquot and store at -20C long term. Avoid freeze-thaw cycles.

www.novusbio.com



technical@novusbio.com

Reviews: 14 Publications: 161

Protocols, Publications, Related Products, Reviews, Research Tools and Images at:
www.novusbio.com/NB100-690

Updated 11/11/2025 v.20.1

**Earn rewards for product
reviews and publications.**

Submit a publication at www.novusbio.com/publications

Submit a review at www.novusbio.com/reviews/destination/NB100-690



NB100-690

alpha Tubulin Antibody (DM1A)

Product Information	
Unit Size	0.1 ml
Concentration	1.0 mg/ml
Storage	Store at 4C short term. Aliquot and store at -20C long term. Avoid freeze-thaw cycles.
Clonality	Monoclonal
Clone	DM1A
Preservative	0.05% Sodium Azide
Isotype	IgG1 Kappa
Purity	Protein G purified
Buffer	PBS
Target Molecular Weight	50 kDa
Product Description	
Description	As the TUBA1A gene is conserved evolutionarily and is ubiquitously expressed in most eukaryotic cell lines, the Alpha tubulin antibody has been shown to be an attractive and effective choice for a loading control, detecting at approximately 50 -55 kDa. Quantitative western blotting requires a loading control in order to account and adjust for the differences in the loading of samples across wells.
Host	Mouse
Gene ID	7846
Gene Symbol	TUBA1A
Species	Human, Mouse, Rat, Porcine, Avian, Bovine, Canine, Chicken, Chinese Hamster, Drosophila, Fungi, Guinea Pig, Goat, Hamster, Parasite, Monkey, Primate, Rabbit, Xenopus, Yeast
Reactivity Notes	Use in Mouse reported in scientific literature (PMID:34871568) Use in Mouse reported in scientific literature (PMID:34533563). Yeast reactivity reported in scientific literature (PMID: 25126732). Goat reactivity reported in scientific literature (PMID:31805146). Will likely react with all mammals.
Marker	Microtubule Marker
Specificity/Sensitivity	This alpha Tubulin Antibody (DM1A) does not cross-react with beta Tubulin.
Immunogen	This alpha Tubulin Antibody (DM1A) was developed against native chicken brain microtubules.
Product Application Details	
Applications	Western Blot, Simple Western, Immunohistochemistry-Paraffin, Flow Cytometry, Flow (Intracellular), Immunocytochemistry/ Immunofluorescence, Immunohistochemistry, Immunohistochemistry-Frozen, Immunomicroscopy, Immunoprecipitation, CyTOF-ready
Recommended Dilutions	Western Blot 1:5000, Simple Western 1:50, Flow Cytometry 1 ug per million cells, Immunohistochemistry 1:100-1:500, Immunocytochemistry/ Immunofluorescence 1:50000-1:100000, Immunoprecipitation 1:50-1:100, Immunohistochemistry-Paraffin 1:100-1:500, Immunohistochemistry-Frozen 1:100-1:500, Immunomicroscopy, Flow (Intracellular), CyTOF-ready



Application Notes

This alpha Tubulin Antibody (DM1A) is useful as a loading control for Western blot as well as Immunoprecipitation, Immunohistochemistry on paraffin-embedded and frozen sections, Immunocytochemistry/Immunofluorescence and Flow Cytometry.

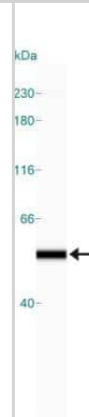
The DM1A alpha tubulin antibody is ideal for use as a Western blot loading control, where a band can be seen around 50-55 kDa and as a cytoskeletal marker in ICC. For IHC-Paraffin, antigen retrieval is not essential, but may optimize staining.

See [Simple Western Antibody Database](#) for Simple Western validation: tested in HeLa lysate (1.0 mg/ml), titrated to saturation using various models; separated by Size-Jess/Wes, Sally Sue/Peggy Sue; separated by size; antibody dilution at 1:50, 6 ug/ml; detects a band at 55 kDa; matrix was 12-230 kDa. Only 10 - 15 ul of the recommended dilution is used per data point.

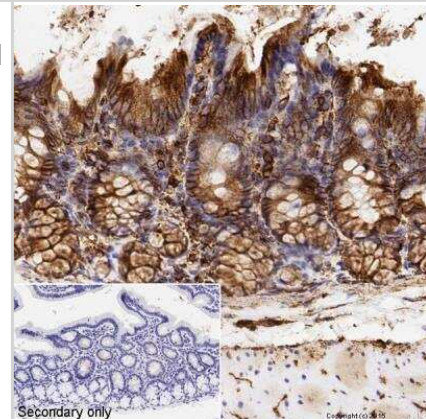
This antibody is CyTOF ready.

Images

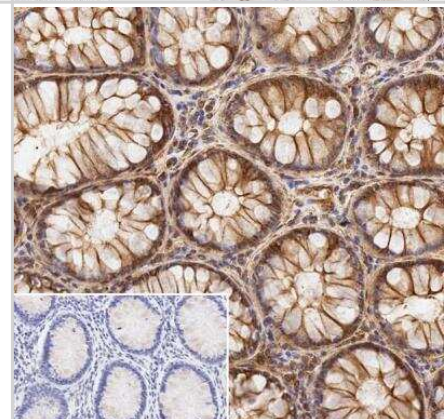
Simple Western: alpha Tubulin Antibody (DM1A) [NB100-690] - Simple Western lane view shows a specific band for alpha Tubulin in 1.0 mg/ml of HeLa lysate. This experiment was performed under reducing conditions using the 12-230 kDa separation system. Alpha tubulin molecular weight: 50 kDa.



Immunohistochemistry: alpha Tubulin Antibody (DM1A) [NB100-690] - Analysis of formalin fixed colon sections. Heat mediated antigen retrieval was performed using sodium citrate buffer for 20 min before incubating with primary antibody at a 0.5ug/ml dilution for 15 min at RT.



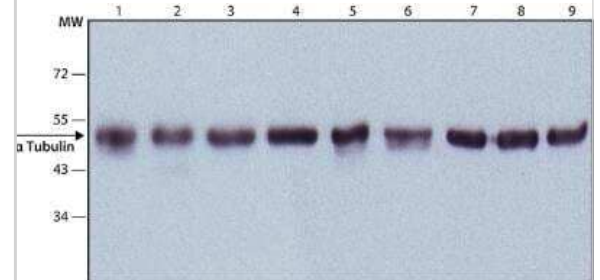
Immunohistochemistry: alpha Tubulin Antibody (DM1A) [NB100-690] - Analysis of colon tissue. Sections were formalin fixed and embedded with paraffin. Sodium citrate heat mediated antigen retrieval for 20 min. Incubated with primary antibody for 15 min at a 5 ug/ml concentration. Corner image is staining with secondary only.



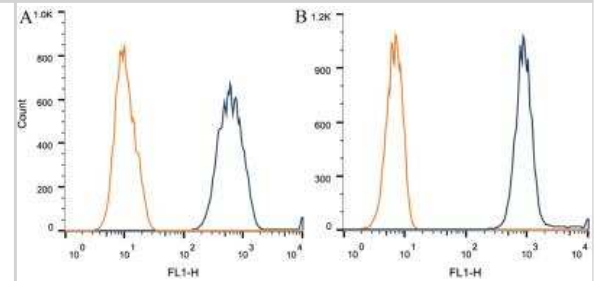
Immunohistochemistry: alpha Tubulin Antibody (DM1A) [NB100-690] - Analysis of formalin fixed paraffin embedded heart sections. Used at a dilution of 1:500.



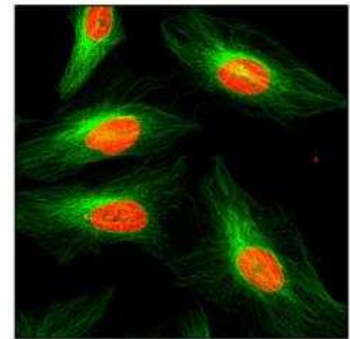
Western Blot: alpha Tubulin Antibody (DM1A) [NB100-690] - Analysis of alpha tubulin in 9 cell lysates. Lane 1. HeLa; Lane 2. JURKAT; Lane 3. COS7; Lane 4. NIH-3T3; Lane 5. PC-12; Lane 6. RAT2; Lane 7. CHO; Lane 8. MDBK; Lane 9. MDCK



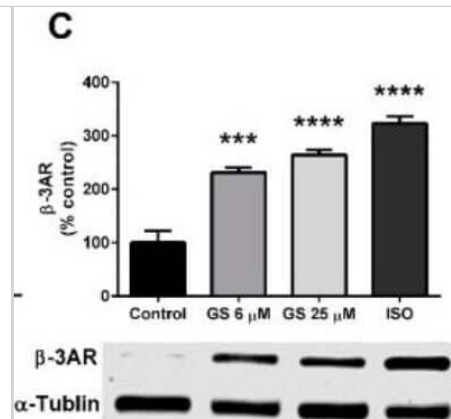
Flow Cytometry: alpha Tubulin Antibody (DM1A) [NB100-690] - Intracellular flow cytometric staining of 1×10^6 CHO (A) and HEK-293 (B) cells using alpha Tubulin antibody (dark blue). Isotype control shown in orange. An antibody concentration of $1 \mu\text{g}/1 \times 10^6$ cells was used.



Immunomicroscopy: alpha Tubulin Antibody (DM1A) [NB100-690] - Analysis of HeLa cells, green staining is alpha tubulin whereas red is DNA stained with propidium iodide.



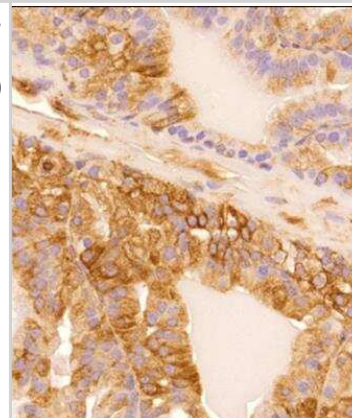
Western Blot: alpha Tubulin Antibody (DM1A) [NB100-690] - GS treatment increases markers of beiging in 3T3-L1 adipocytes. GS treatment upregulates markers of beiging, including beta-3AR (C) proteins. Data presented as mean +/- SEM from n = 4 replicates per group. * p < 0.05, *** p < 0.001 vs. control. Abbreviations: beta-3 adrenergic receptor (beta-3AR). Image collected and cropped by CiteAb from the following publication (<https://www.mdpi.com/2305-6320/6/1/22>), licensed under a CC-BY license.



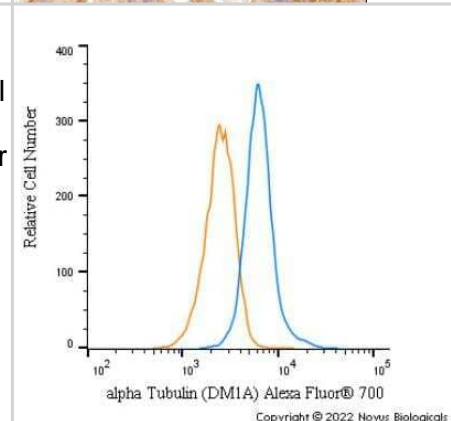
Immunocytochemistry/Immunofluorescence: alpha Tubulin Antibody (DM1A) - BSA Free [NB100-690] - Mouse MS1 cells were fixed in 4% paraformaldehyde for 10 minutes and permeabilized in 0.05% Triton X-100 in PBS for 5 minutes. The cells were incubated with alpha Tubulin Antibody [DM1A] conjugated to Alexa Fluor 647 (NB100-690AF647) at 2 μ g/ml for 1 hour at room temperature. Nuclei were counterstained with DAPI (Blue). Cells were imaged using a 100X objective and digitally deconvolved.



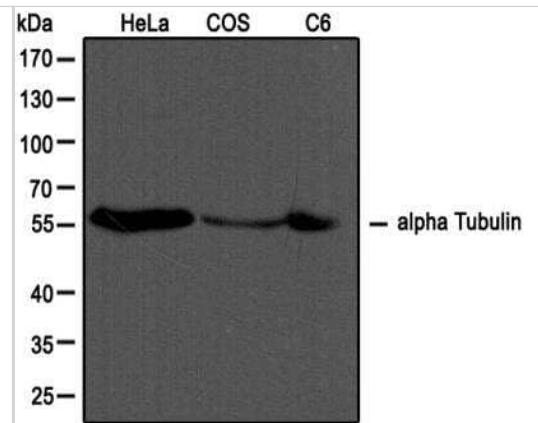
Immunohistochemistry-Paraffin: alpha Tubulin Antibody (DM1A) [NB100-690] - IHC analysis of a formalin fixed and paraffin embedded tissue section of mouse prostate using alpha Tubulin Antibody (DM1A) at 1:200 dilution. The signal was developed using HRP labelled secondary and DAB reagent which followed counterstaining with hematoxylin. The antibody generated a specific cytoplasmic/cytoskeletal staining in the prostate epithelial cells.



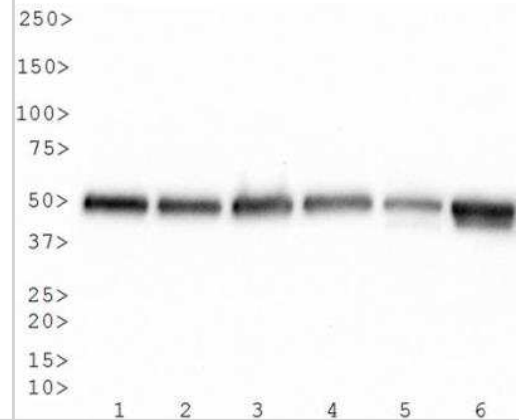
Flow Cytometry: alpha Tubulin Antibody (DM1A) [NB100-690] - An intracellular stain was performed on HeLa cells with alpha Tubulin [DM1A] Antibody NB100-690AF700 (blue) and a matched isotype control (orange). Cells were fixed with 4% PFA and then permeabilized with 0.1% saponin. Cells were incubated in an antibody dilution of 5 μ g/mL for 30 minutes at room temperature. Both antibodies were conjugated to Alexa Fluor 700.



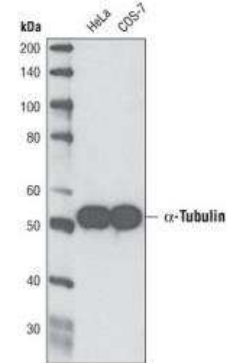
Western Blot: alpha Tubulin Antibody (DM1A) [NB100-690] - Western blot analysis of extracts from HeLa, COS and C6 cells using alpha Tubulin antibody (NB100-690, 1:1000, Alpha tubulin molecular weight: 50 kDa)



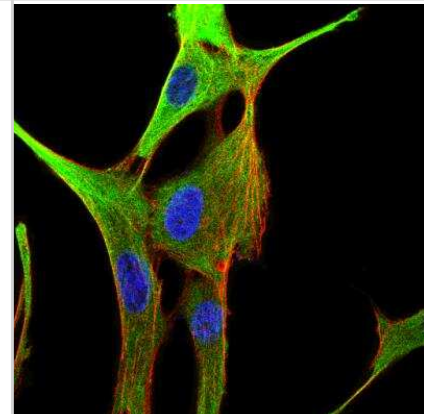
Western Blot: alpha Tubulin Antibody (DM1A) [NB100-690] - Analysis of alpha tubulin (molecular weight of 50 kDa) in 9 cell lysates. Lane 1. HeLa; Lane 2. JURKAT; Lane 3. COS7; Lane 4. NIH-3T3; Lane 5. PC-12; Lane 6. RAT2; Lane 7. CHO; Lane 8. MDBK; Lane 9. MDCK



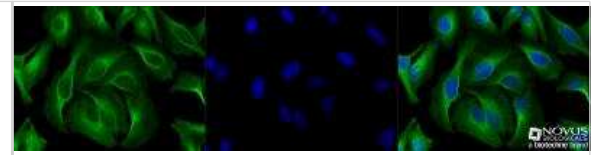
Western Blot: alpha Tubulin Antibody (DM1A) [NB100-690] - Analysis of HeLa and COS-7 lysates. Alpha tubulin molecular weight: 50 kDa.



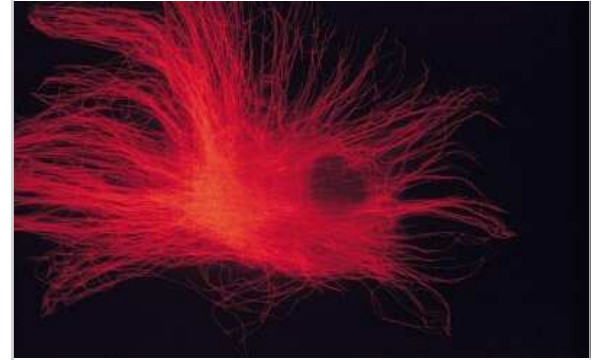
Immunocytochemistry/Immunofluorescence: alpha Tubulin Antibody (DM1A) [NB100-690] - IF Confocal analysis of C6 cells using alpha Tubulin antibody (NB100-690, 1:50). An Alexa Fluor 488-conjugated Goat to mouse IgG was used as secondary antibody (green, A). Actin filaments were labeled with Alexa Fluor 568 phalloidin (red, B). DAPI was used to stain the cell nuclei (blue, C).



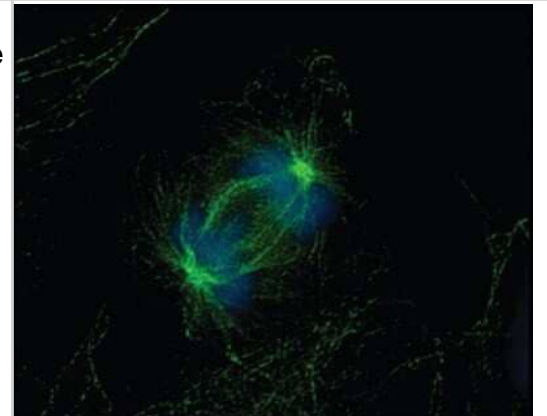
Immunocytochemistry/Immunofluorescence: alpha Tubulin Antibody (DM1A) [NB100-690] - HeLa cells were fixed for 10 minutes using 10% formalin and then permeabilized for 5 minutes using 1X TBS + 0.5% Triton-X100. The cells were incubated with anti-alpha Tubulin (DM1A) (NB100-690) at a 1:200 dilution overnight at 4C and detected with an anti-mouse Dylight 488 (Green) at a 1:500 dilution. Nuclei were counterstained with DAPI (Blue). Cells were imaged using a 40X objective.



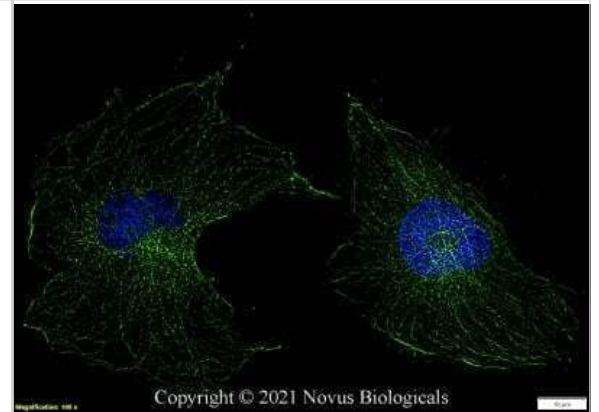
Immunocytochemistry/Immunofluorescence: alpha Tubulin Antibody (DM1A) [NB100-690] - Staining of skin fibroblasts.



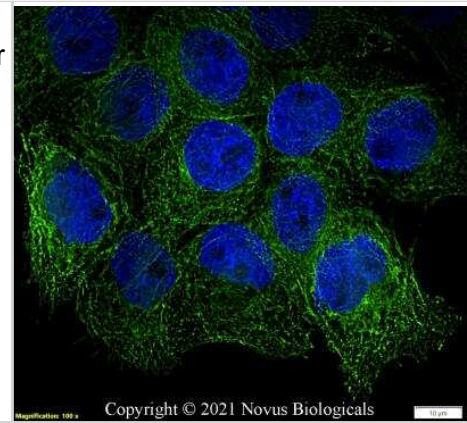
Immunocytochemistry/Immunofluorescence: alpha Tubulin Antibody (DM1A) [NB100-690] - Analysis of embryonic fibroblasts in the anaphase portion of mitosis.



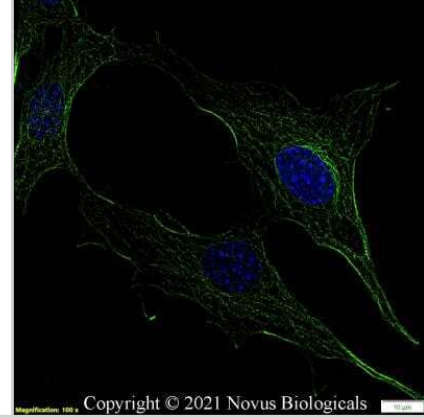
Immunocytochemistry/Immunofluorescence: alpha Tubulin Antibody (DM1A) [NB100-690] - U-251 MG cells were fixed in 4% paraformaldehyde for 10 minutes and permeabilized in 0.05% Triton X-100 in PBS for 5 minutes. The cells were incubated with anti-alpha Tubulin Antibody [DM1A] conjugated to Alexa Fluor 488 (NB100-690AF488) at 5 ug/ml for 1 hour at room temperature. Nuclei were counterstained with DAPI (Blue). Cells were imaged using a 100X objective and digitally deconvolved.



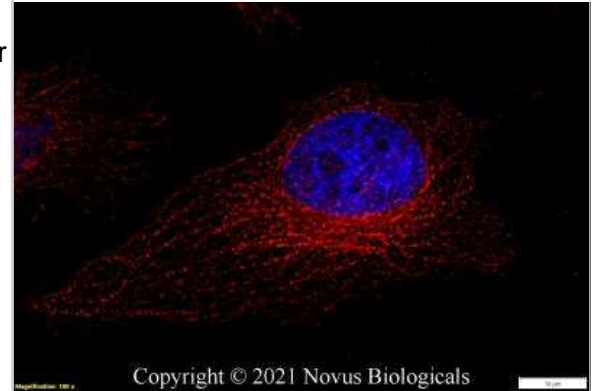
Immunocytochemistry/Immunofluorescence: alpha Tubulin Antibody (DM1A) [NB100-690] - A431 cells were fixed in 4% paraformaldehyde for 10 minutes and permeabilized in 0.05% Triton X-100 in PBS for 5 minutes. The cells were incubated with anti-alpha Tubulin Antibody [DM1A] conjugated to Alexa Fluor 488 (NB100-690AF488) at 5 ug/ml for 1 hour at room temperature. Nuclei were counterstained with DAPI (Blue). Cells were imaged using a 100X objective and digitally deconvolved.



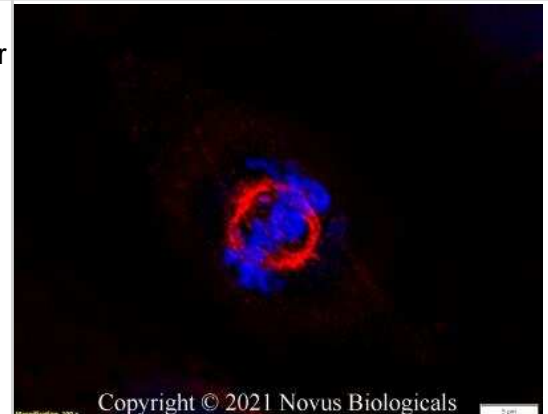
Immunocytochemistry/Immunofluorescence: alpha Tubulin Antibody (DM1A) [NB100-690] - NIH3T3 cells were fixed in 4% paraformaldehyde for 10 minutes and permeabilized in 0.05% Triton X-100 in PBS for 5 minutes. The cells were incubated with anti-alpha Tubulin Antibody [DM1A] conjugated to Alexa Fluor 488 (NB100-690AF488) at 5 ug/ml for 1 hour at room temperature. Nuclei were counterstained with DAPI (Blue). Cells were imaged using a 100X objective and digitally deconvolved.



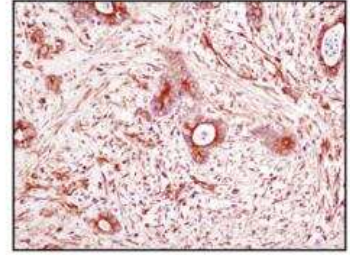
Immunocytochemistry/Immunofluorescence: alpha Tubulin Antibody (DM1A) [NB100-690] - HeLa cells were fixed in 4% paraformaldehyde for 10 minutes and permeabilized in 0.05% Triton X-100 in PBS for 5 minutes. The cells were incubated with alpha Tubulin Antibody [DM1A] conjugated to Janelia Fluor 549 (NB100-690JF549) at 5 ug/ml for 1 hour at room temperature. Nuclei were counterstained with DAPI (Blue). Cells were imaged using a 100X objective and digitally deconvolved.



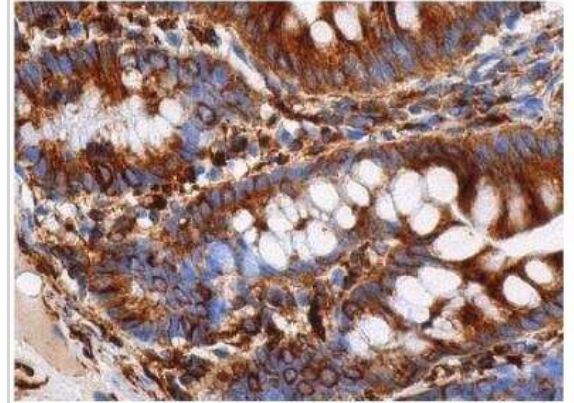
Immunocytochemistry/Immunofluorescence: alpha Tubulin Antibody (DM1A) [NB100-690] - HeLa cells were fixed in 4% paraformaldehyde for 10 minutes and permeabilized in 0.05% Triton X-100 in PBS for 5 minutes. The cells were incubated with alpha Tubulin Antibody [DM1A] conjugated to Janelia Fluor 549 (NB100-690JF549) at 5 ug/ml for 1 hour at room temperature. Nuclei were counterstained with DAPI (Blue). Cells were imaged using a 100X objective and digitally deconvolved.



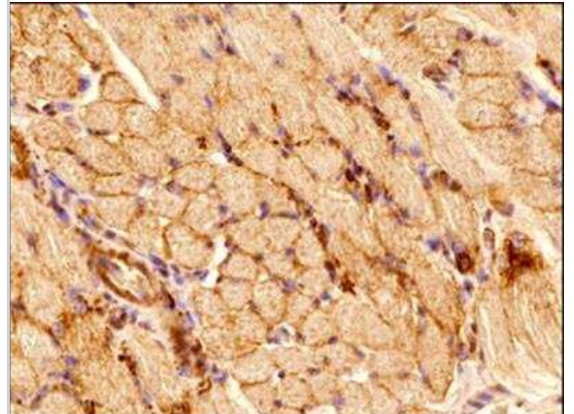
Immunohistochemistry: alpha Tubulin Antibody (DM1A) [NB100-690] - Analysis of paraffin embedded colon sections.



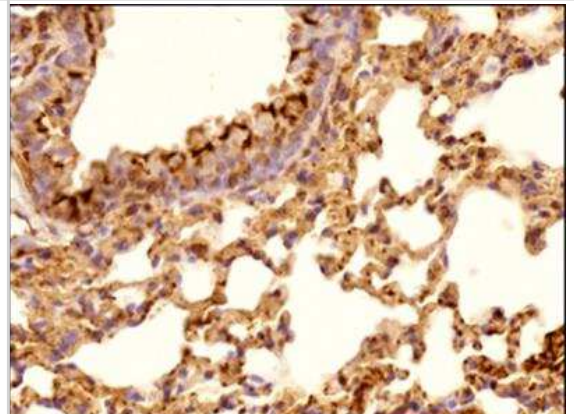
Immunohistochemistry: alpha Tubulin Antibody (DM1A) [NB100-690] - Analysis of small intestine tissue fixed with formalin and paraffin embedded showing cytoplasmic and cytoskeletal staining of glandular cells.



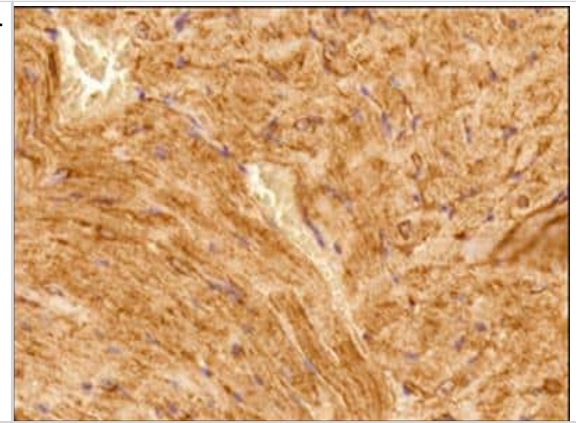
Immunohistochemistry-Paraffin: alpha Tubulin Antibody (DM1A) [NB100-690] - IHC analysis of a formalin fixed paraffin embedded tissue section of mouse skeletal muscle using alpha Tubulin Antibody (DM1A) at 1:100 dilution with HRP-DAB detection and hematoxylin counterstaining. The antibody generated a strong cytoplasmic signal in the muscle cells with cytoplasmic-nuclear signal in the endothelial cells.



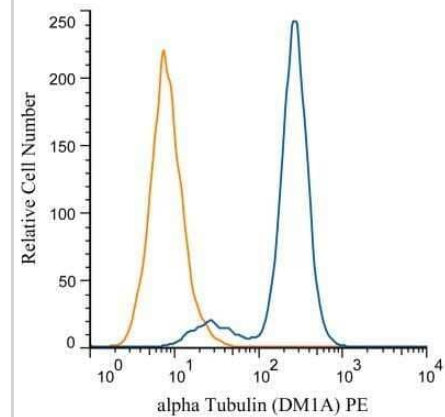
Immunohistochemistry-Paraffin: alpha Tubulin Antibody (DM1A) [NB100-690] - IHC analysis of a formalin fixed paraffin embedded tissue section of mouse lung using alpha Tubulin Antibody (DM1A) at 1:100 dilution with HRP-DAB detection and hematoxylin counterstaining. The antibody generated chunks of cytoplasmic signal in the alveolar and bronchiolar epithelial cells.



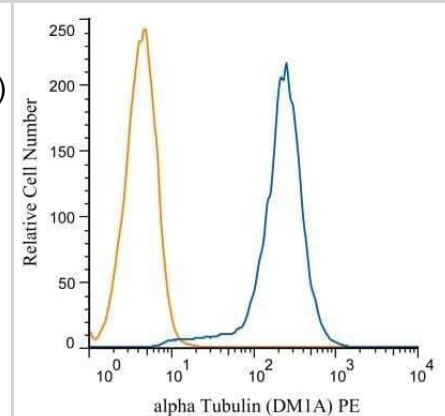
Immunohistochemistry-Paraffin: alpha Tubulin Antibody (DM1A) [NB100-690] - IHC analysis of a formalin fixed paraffin embedded tissue section of mouse heart using alpha Tubulin Antibody (DM1A) at 1:100 dilution with HRP-DAB detection and hematoxylin counterstaining. The antibody generated a strong and specific cytoplasmic signal in the muscle cells.



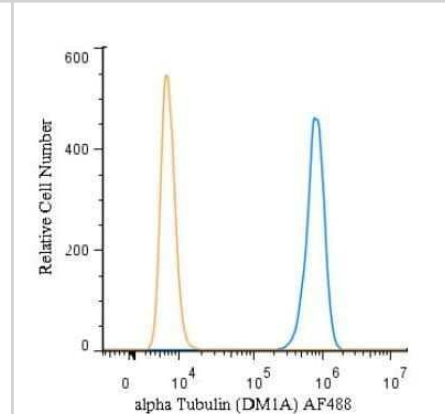
Flow Cytometry: alpha Tubulin Antibody (DM1A) [NB100-690] - Analysis of PE conjugate of NB100-690. An intracellular stain was performed on RAW 246.7 cells with Alpha Tubulin antibody (DM1A) NB100-690PE (blue) and a matched isotype control NBP2-27287PE (orange). Cells were fixed with 4% PFA and then permeablized wi



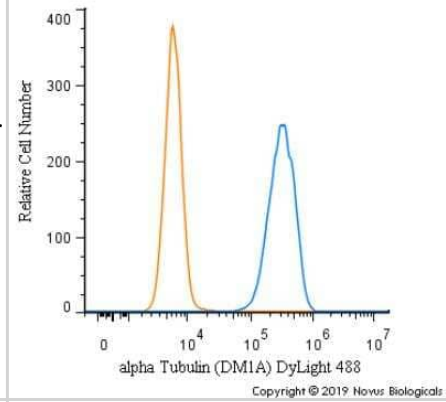
Flow Cytometry: alpha Tubulin Antibody (DM1A) [NB100-690] - Analysis of PE conjugate of NB100-690. An intracellular stain was performed on SH-SY5Y cells with Alpha Tubulin antibody (DM1A) NB100-690PE (blue) and a matched isotype control NBP2-27287PE (orange). Cells were fixed with 4% PFA and then permeablized with



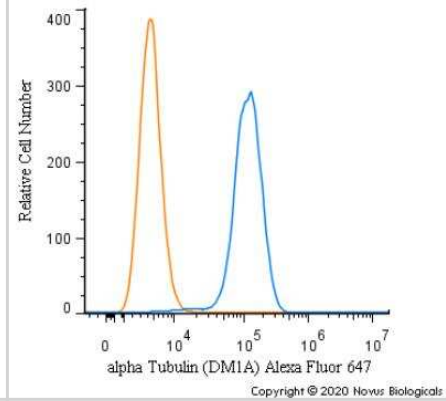
Flow (Intracellular): alpha Tubulin Antibody (DM1A) [NB100-690] - An intracellular stain was performed on HeLa cells with alpha Tubulin Antibody (DM1A) NB100-690AF488 (blue) and a matched isotype control (orange). Cells were fixed with 4% PFA and then permeablized with 0.1% saponin. Cells were incubated in an antibody dilution of 5 ug/mL for 30 minutes at room temperature. Both antibodies were conjugated to Alexa Fluor 488. Image from the Alexa Fluor 488 version of this antibody.



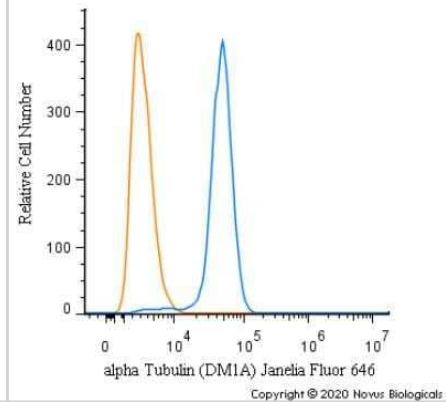
Flow Cytometry: alpha Tubulin Antibody (DM1A) [NB100-690] - An intracellular stain was performed on HeLa cells with alpha Tubulin (DM1A) Antibody NB100-690G (blue) and a matched isotype control (orange). Cells were fixed with 4% PFA and then permeabilized with 0.1% saponin. Cells were incubated in an antibody dilution of 5 ug/mL for 30 minutes at room temperature. Both antibodies were conjugated to DyLight 488.



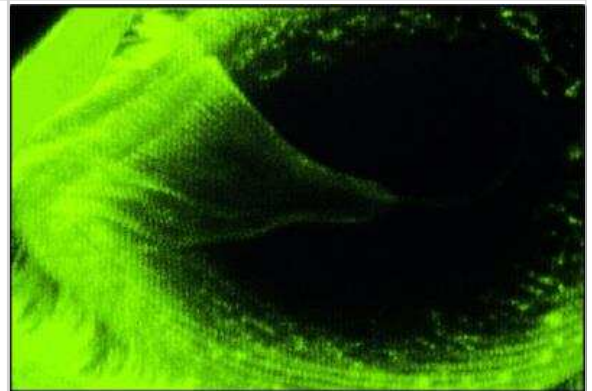
Flow Cytometry: alpha Tubulin Antibody (DM1A) [NB100-690] - An intracellular stain was performed on HeLa cells with alpha Tubulin [DM1A] Antibody NB100-690AF647 (blue) and a matched isotype control (orange). Cells were fixed with 4% PFA and then permeabilized with 0.1% saponin. Cells were incubated in an antibody dilution of 2.5 ug/mL for 30 minutes at room temperature. Both antibodies were conjugated to Alexa Fluor 647.



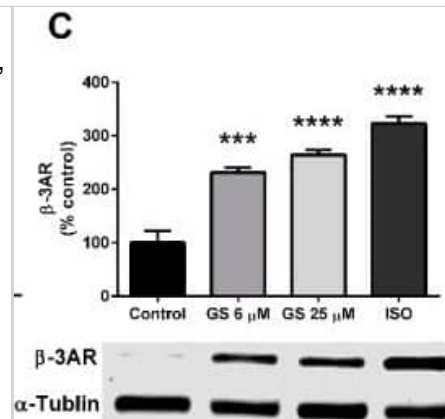
Flow Cytometry: alpha Tubulin Antibody (DM1A) [NB100-690] - An intracellular stain was performed on HeLa cells with alpha Tubulin (DM1A) Antibody NB100-690JF646 (blue) and a matched isotype control (orange). Cells were fixed with 4% PFA and then permeabilized with 0.1% saponin. Cells were incubated in an antibody dilution of 2.5 ug/mL for 30 minutes at room temperature. Both antibodies were conjugated to Janelia Fluor 646.



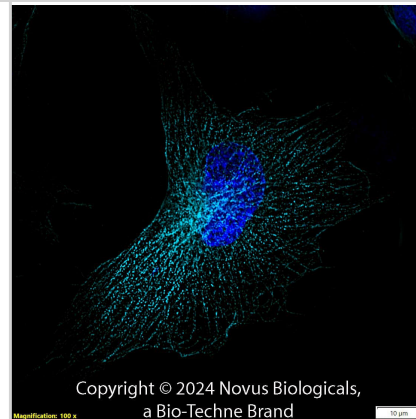
Immunomicroscopy: alpha Tubulin Antibody (DM1A) [NB100-690] - Staining of the marine parasite *Cryptocaryon irritans* mouth. Large bundles of microtubules form a cytophyrgeal basket.



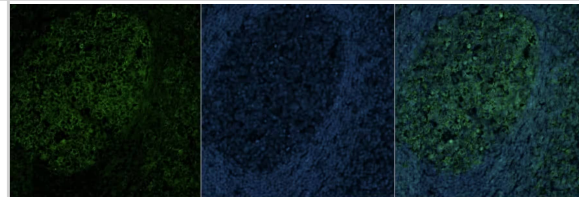
GS treatment increases markers of beiging in 3T3-L1 adipocytes. GS treatment upregulates markers of beiging, including UCP1 (A), TBX1 (B), and β -3AR (C) proteins. Data presented as mean \pm SEM from n = 4 replicates per group. * p < 0.05, *** p < 0.001 vs. control. Abbreviations: isoproterenol (ISO), uncoupling protein 1 (UCP1), glyceraldehyde 3-phosphate dehydrogenase (GAPDH), T-box protein 1 (TBX1), β -3 adrenergic receptor (β -3AR).



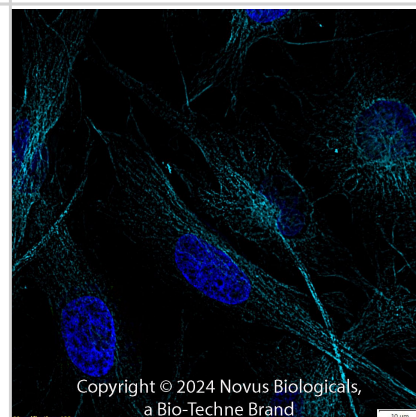
Alpha Tubulin (DM1A) was detected in immersion fixed U-251 MG human glioblastoma cell line using Mouse anti-alpha Tubulin (DM1A) Protein-G purified Monoclonal Antibody conjugated to Alexa Fluor® 647 (Catalog # NB100-690AF647) (light blue) at 2 μ g/mL overnight at 4C. Cells were counterstained with DAPI (dark blue). Cells were imaged using 100X objective and digitally deconvolved.



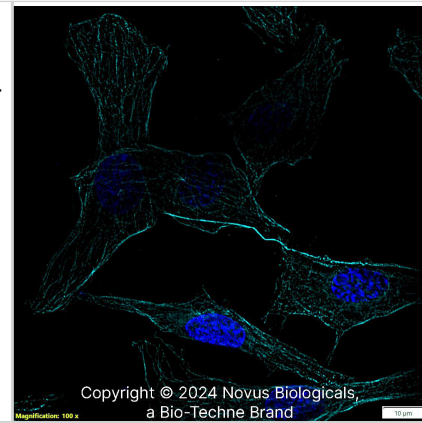
Immunohistochemistry-Paraffin: Mouse Monoclonal alpha Tubulin Antibody (DM1A) [IMG-80196] [NB100-690] - Immunofluorescence staining of human tonsil FFPE tissue in a dilution of 1:50 (Catalog # NB100-690AF488) in 3% BSA with overnight incubation at 4°C. Heat mediated antigen retrieval at pH 9. Image from a verified customer review.



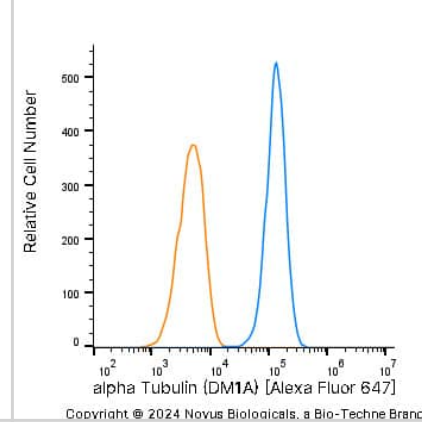
Alpha Tubulin (DM1A) was detected in immersion fixed U-251 MG human glioblastoma cell line using Mouse anti-alpha Tubulin (DM1A) Protein-G purified Monoclonal Antibody conjugated to Alexa Fluor® 647 (Catalog # NB100-690AF647) (light blue) at 2 μ g/mL overnight at 4C. Cells were counterstained with DAPI (dark blue). Cells were imaged using 100X objective and digitally deconvolved.



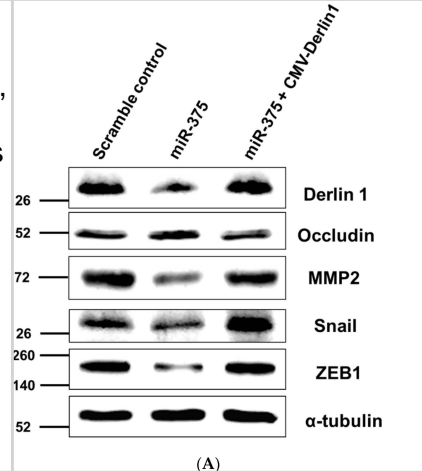
alpha Tubulin (DM1A) was detected in immersion FR rat skin fibroblast cell line using Mouse anti-alpha Tubulin (DM1A) Protein G Purified Monoclonal Antibody conjugated to Alexa Fluor® 647 (Catalog # NB100-690AF647) (light blue) at 2 µg/mL overnight at 4C. Cells were counterstained with DAPI (dark blue). Cells were imaged using a 100X objective and digitally deconvolved.



U-251 MG human glioblastoma cell line was stained with Mouse anti-alpha Tubulin (DM1A) Protein-G purified Monoclonal Antibody conjugated to Alexa Fluor® 647 (Catalog # NB100-690AF647, blue histogram) or matched control antibody (orange histogram).



Western Blot: alpha Tubulin Antibody (DM1A) - BSA Free [NB100-690] - MiR-375-3p negatively regulates Derlin-1 & blocks EMT in BFTC909 cells. (A) Western blot revealed the restoration of Derlin-1, MMP-2, Snail, & ZEB1 after co-transfection of miR-375-3p mimics & CMV-Derlin-1 compared with cells transfected with miR-375-3p alone in BFTC909 cells with α -tubulin as a reference (B) Quantification of the protein levels of Derlin-1, occludin, MMP-2, Snail, & ZEB1 from (A) (N = 3). (C) miR-375-3p suppressed BFTC909 cell migration ability but restored by Derlin-1 overexpression (N = 3). (D) miR-375-3p repressed invasion of BFTC909 cells but restored by Derlin-1 overexpression (N = 3). Data were represented as mean \pm SD; * $p < 0.05$, ** $p < 0.01$. Image collected & cropped by CiteAb from the following publication (<https://pubmed.ncbi.nlm.nih.gov/35205628>), licensed under a CC-BY license. Not internally tested by Novus Biologicals.

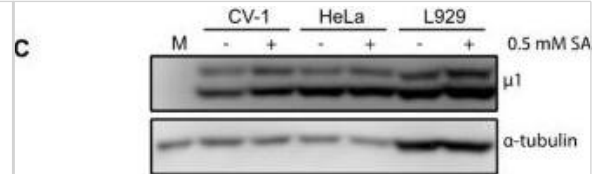


Western Blot: alpha Tubulin Antibody (DM1A) - BSA Free [NB100-690] - Nifedipine stimulated tremendous production of reactive oxygen species (ROS), & KIM-1 in 24 & 48 h. (a) Nifedipine 30 µM-treated group had induced a higher ROS (3.3-fold vs. control, $p < 0.01$) compared to H₂O₂ 500 µM. (2.7-fold vs. control, $p < 0.01$). (b,c) Nifedipine 7.5, 15, & 30 µM-treated groups for 24 h (tubulin as internal control) had upregulated KIM-1 in dose dependent fashion (101%, 102%, $p < 0.05$, & 122%, $p < 0.01$ respectively) & reduced to 86%, 91%, & 80% in 48 h (actin as internal control), respectively. p -values ≤ 0.05 (marked as *) were considered statistically significant. In addition, p -values ≤ 0.01 are marked as **. Image collected & cropped by CiteAb from the following publication (<https://pubmed.ncbi.nlm.nih.gov/30934807>), licensed under a CC-BY license. Not internally tested by Novus Biologicals.



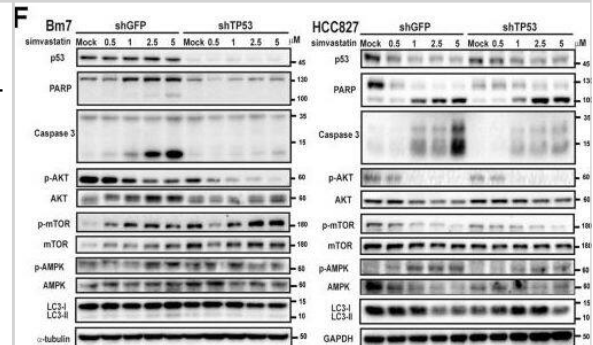
Western Blot: alpha Tubulin Antibody (DM1A) - BSA Free [NB100-690] - Pre-treatment with 0.5 mM sodium arsenite (SA) enhances permissivity in a cell-type-specific manner across reovirus strains. (A) CV-1, HeLa, L929, or HPDE cells were left untreated (no SA) or were treated with 0.5 mM SA for 30 min prior to infection (Pre-SA). Following this, cells were infected with T3D such that ~20% to 50% of cells were infected & at 18 h p.i. cells were fixed & immunostained for μ NS & DAPI to visualize viral factories (VFs). The percent of cells containing VFs was quantified ($(\#$ of cells containing VFs/total $\#$ of cells) \times 100) from three independent experiments. The expression level of μ NS (B) & μ 1 (C) was determined in CV-1, L929, or HeLa cells either left untreated (no SA) or treated with 0.5 mM SA for 30 min (Pre-SA) before infection with T3D at MOI = 1. At 18 h p.i., cells were harvested & the expression level of the indicated proteins was determined by immunoblot. M = mock. Densitometry analysis of the band intensity for μ NS & μ 1 was adjusted to the matched α -tubulin loading control for two independent experiments. Columns represent mean \pm SEM. (D) CV-1; (E) L929; or (F) HeLa cells were left untreated (no SA) or were treated with 0.5 mM SA prior to infection (Pre-SA). Cells were then infected with the reovirus strains, T3D, T1L, or T3A, as described in (A). At 18 h p.i., cells were fixed & immunostained for μ NS & DAPI to detect VFs. The percent of cells containing VFs was quantified ($(\#$ of cells containing VFs/total $\#$ of cells) \times 100) from at least two independent experiments. * $p < 0.05$; ** $p < 0.01$; two-tailed unpaired t test. The error bars indicate S.D. Image collected & cropped by CiteAb from the following publication

(<https://pubmed.ncbi.nlm.nih.gov/31216693>), licensed under a CC-BY license. Not internally tested by Novus Biologicals.



Western Blot: alpha Tubulin Antibody (DM1A) - BSA Free [NB100-690] - Simvastatin increases cytotoxicity in lung cancer cells. (A) Relative survival (%) in lung cancer cells treated with simvastatin for 48 h using 3-[4,5-dimethylthiazol-2-yl]-2,5 diphenyl tetrazolium bromide (MTT) assays is shown. (B) The half-maximal inhibitory concentration (IC₅₀) of simvastatin is summarized, & western blots of p53 in low-invasive CL1-0 & high-invasive Bm7 cells are shown with elongation factor 1 alpha (EF1 α) used as a loading control. (C) Z score of statins as well as simvastatin in lung cancer cell lines from NCI-DTP database, z score > 0 for sensitive & < 0 resistant. (D) Apoptotic H1299 (null p53), A549 (wild type p53), Bm7-shGFP (mutant p53), & Bm7-shTP53 (knock-down p53) cells treated with simvastatin were detected using flow cytometry, * $P < 0.05$ & ** $P < 0.01$. (E) Apoptotic HCC827-shGFP (mutant p53) & HCC827-shTP53 (knock-down p53) cells treated with simvastatin & cisplatin were detected using flow cytometry, * $P < 0.05$ & ** $P < 0.01$. (F) Western blots of indicated proteins involved in apoptosis & autophagy in both Bm7 & HCC827 cells with control (shGFP) & p53 knockdown (shTP53) treated with simvastatin is shown. MDM2, murine double minute 2; AKT, serine-threonine kinase; PARP, poly (ADP-ribose) polymerase; mTOR, mammalian target of rapamycin; WT, wild type. Full-length blots/gels are presented in Supplementary Fig. 1. Image collected & cropped by CiteAb from the following publication

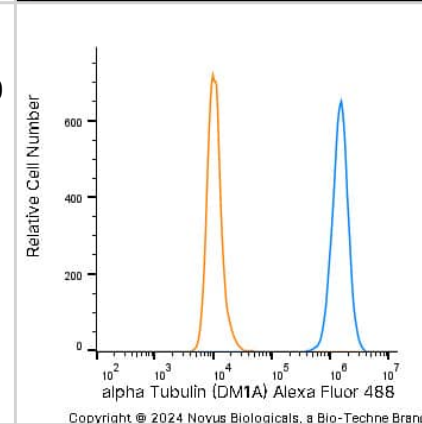
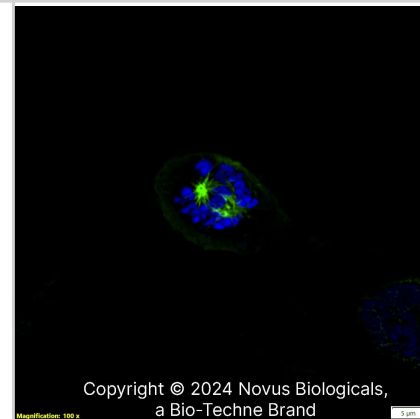
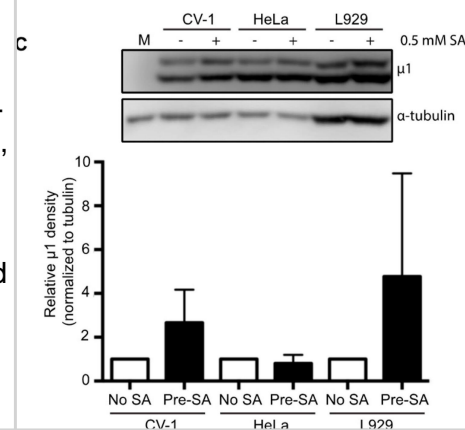
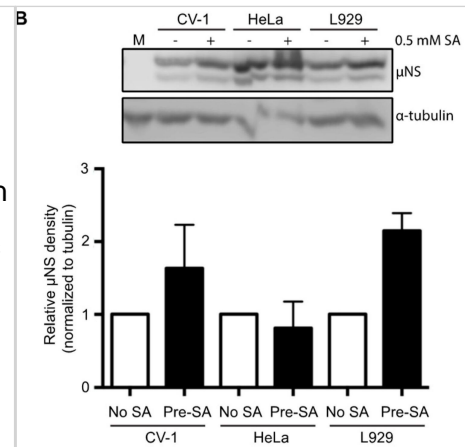
(<https://pubmed.ncbi.nlm.nih.gov/31892709>), licensed under a CC-BY license. Not internally tested by Novus Biologicals.



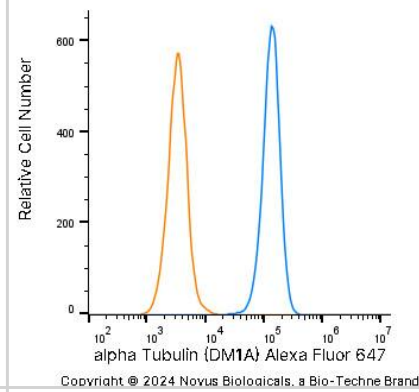
Western Blot: alpha Tubulin Antibody (DM1A) - BSA Free [NB100-690] - Pre-treatment with 0.5 mM sodium arsenite (SA) enhances permissivity in a cell-type-specific manner across reovirus strains. (A) CV-1, HeLa, L929, or HPDE cells were left untreated (no SA) or were treated with 0.5 mM SA for 30 min prior to infection (Pre-SA). Following this, cells were infected with T3D such that ~20% to 50% of cells were infected & at 18 h p.i. cells were fixed & immunostained for μ NS & DAPI to visualize viral factories (VFs). The percent of cells containing VFs was quantified ($(\# \text{ of cells containing VFs} / \text{total } \# \text{ of cells}) \times 100$) from three independent experiments. The expression level of μ NS (B) & μ 1 (C) was determined in CV-1, L929, or HeLa cells either left untreated (no SA) or treated with 0.5 mM SA for 30 min (Pre-SA) before infection with T3D at MOI = 1. At 18 h p.i., cells were harvested & the expression level of the indicated proteins was determined by immunoblot. M = mock. Densitometry analysis of the band intensity for μ NS & μ 1 was adjusted to the matched α -tubulin loading control for two independent experiments. Columns represent mean \pm SEM. (D) CV-1; (E) L929; or (F) HeLa cells were left untreated (no SA) or were treated with 0.5 mM SA prior to infection (Pre-SA). Cells were then infected with the reovirus strains, T3D, T1L, or T3A, as described in (A). At 18 h p.i., cells were fixed & immunostained for μ NS & DAPI to detect VFs. The percent of cells containing VFs was quantified ($(\# \text{ of cells containing VFs} / \text{total } \# \text{ of cells}) \times 100$) from at least two independent experiments. * $p < 0.05$; ** $p < 0.01$; two-tailed unpaired t test. The error bars indicate S.D. Image collected & cropped by CiteAb from the following publication (<https://pubmed.ncbi.nlm.nih.gov/31216693>), licensed under a CC-BY license. Not internally tested by Novus Biologicals.

Alpha Tubulin (DM1A) was detected in immersion fixed U-2 OS human osteosarcoma cell line using Mouse anti-Alpha Tubulin (DM1A) Protein G Purified Monoclonal Antibody conjugated to Alexa Fluor® 488 (Catalog # NB100-690AF488) (green) at 2 μ g/mL overnight at 4C. Cells were counterstained with DAPI (dark blue). Cells were imaged using a 100X objective and digitally deconvolved.

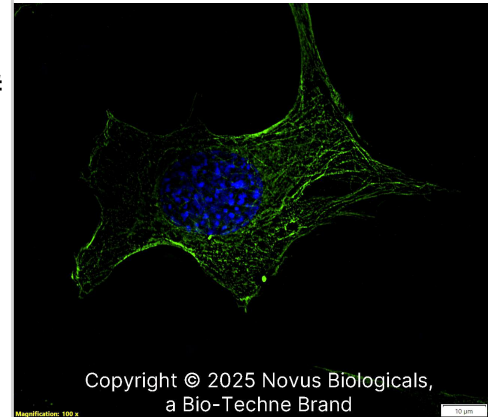
An intracellular stain was performed on U-2 OS human osteosarcoma cell line with Mouse anti-alpha Tubulin (DM1A) Protein-G purified Monoclonal Antibody conjugated to Alexa Fluor® 488 (Catalog # NB100-690AF488, blue histogram) or matched control antibody (orange histogram) at 5 μ g/mL for 30 minutes at RT.



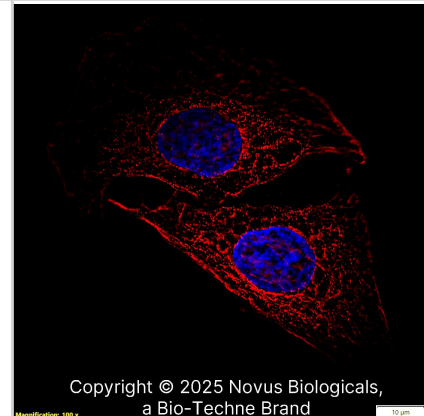
An intracellular stain was performed on A431 human skin carcinoma cell line using Mouse anti-alpha Tubulin (DM1A) Protein-G purified Monoclonal Antibody conjugated to Alexa Fluor® 647 (Catalog # NB100-690AF647, blue histogram) or matched control antibody (orange histogram) at 2.5 µg/mL for 30 minutes at RT.



Alpha Tubulin (DM1A) was detected in immersion fixed NIH-3T3 Mouse fibroblast cell line using Mouse anti-Alpha Tubulin (DM1A) Protein G Purified Monoclonal Antibody conjugated to Alexa Fluor® 488 (Catalog # NB100-690AF488) (green) at 2 µg/mL overnight at 4C. Cells were counterstained with DAPI (dark blue). Cells were imaged using a 100X objective and digitally deconvolved.



Alpha Tubulin (DM1A) was detected in immersion fixed U-2 OS human osteosarcoma cell line using Mouse anti-Alpha Tubulin (DM1A) Protein G Purified Monoclonal Antibody conjugated to Biotin (Catalog # NB100-690B) at 2 µg/mL overnight at 4C. Cells were stained using Streptavidin conjugated to DyLight 550 (red) and counterstained with DAPI (blue). Cells were imaged using a 100X objective and digitally deconvolved.



Publications

Jang JE, Ko MS, Yun JY et al. Nitric Oxide Produced by Macrophages Inhibits Adipocyte Differentiation and Promotes Profibrogenic Responses in Preadipocytes to Induce Adipose Tissue Fibrosis. *Diabetes* 2016-09-01 [PMID: 27246913]

Detlefsen AJ, Mesaros CA, Duan L, Penning TM. AKR1C3 Converts Castrate and Post-Abiraterone DHEA-S into Testosterone to Stimulate Growth of Prostate Cancer Cells via 5-Androstene-3 β ,17 β -Diol *Cancer Research Communications* 2023-09-19 [PMID: 37772993]

Erdem C, Mutsuddy A, Bensman EM et al. A scalable, open-source implementation of a large-scale mechanistic model for single cell proliferation and death signaling *Nature Communications* 2022-06-21 [PMID: 35729113]

YC Lin, JC Wang, MS Wu, YF Lin, CR Chen, CY Chen, KC Chen, CC Peng Nifedipine Exacerbates Lipogenesis in the Kidney via KIM-1, CD36, and SREBP Upregulation: Implications from an Animal Model for Human Study *Int J Mol Sci*, 2020-06-19;21(12):. 2020-06-19 [PMID: 32575412]

J Gartrell, M Mellado-La, MR Clay, A Bahrami, NA Sahr, A Sykes, K Blankenshi, L Hoffmann, J Xie, HP Cho, N Twarog, M Connelly, KK Yan, J Yu, SN Porter, SM Pruett-Mil, G Neale, CL Tinkle, SM Federico, EA Stewart, AA Shelat SLFN11 is Widely Expressed in Pediatric Sarcoma and Induces Variable Sensitization to Replicative Stress Caused By DNA-Damaging Agents *Molecular Cancer Therapeutics*, 2021-08-19;20(11):2151-2165. 2021-08-19 [PMID: 34413129]

Shyam R, Ogando DG, Bonanno JA. Mitochondrial ROS in Slc4a11 KO Corneal Endothelial Cells Lead to ER Stress *Frontiers in Cell and Developmental Biology* 2022-04-26 [PMID: 35557943]

Lin, YC;Wu, MS;Lin, YF;Chen, CR;Chen, CY;Chen, CJ;Shen, CC;Chen, KC;Peng, CC; Nifedipine Modulates Renal Lipogenesis via the AMPK-SREBP Transcriptional Pathway *Int J Mol Sci* 2019-03-29 [PMID: 30934807]

F Wei, CJ Neal, TS Sakthivel, Y Fu, M Omer, A Adhikary, S Ward, KM Ta, S Moxon, M Molinari, J Asiatico, M Kinzel, SN Yarmolenko, V San Cheong, N Orlovskaya, R Ghosh, S Seal, M Coathup A novel approach for the prevention of ionizing radiation-induced bone loss using a designer multifunctional cerium oxide nanozyme *Bioactive materials*, 2022-09-21;21(0):547-565. 2022-09-21 [PMID: 36185749]

Liu N, Lin MM, Huang SS et al. NADPH and Mito-Apocynin Treatment Protects Against KA-Induced Excitotoxic Injury Through Autophagy Pathway *Frontiers in Cell and Developmental Biology* 2021-02-11 [PMID: 33644049]

Molinas A, Heil S, Koch S. The Candidate IBD Risk Gene CCNY Is Dispensable for Intestinal Epithelial Homeostasis *Cells* 2021-09-06 [PMID: 34571979]

Wu MT, Ye WT, Wang YC et al. MTHFR Knockdown Assists Cell Defense against Folate Depletion Induced Chromosome Segregation and Uracil Misincorporation in DNA *International Journal of Molecular Sciences* 2021-08-30 [PMID: 34502300]

Shyam R, Ogando DG, Kim ET et al. Rescue of the Congenital Hereditary Endothelial Dystrophy Mouse Model by Adeno-Associated Viruse-Mediated Slc4a11 Replacement *Ophthalmology Science* 2022-09-02 [PMID: 36051248]

More publications at <http://www.novusbio.com/NB100-690>





Novus Biologicals USA

10730 E. Briarwood Avenue
Centennial, CO 80112
USA
Phone: 303.730.1950
Toll Free: 1.888.506.6887
Fax: 303.730.1966
nb-customerservice@bio-techne.com

Bio-Techne Canada

21 Canmotor Ave
Toronto, ON M8Z 4E6
Canada
Phone: 905.827.6400
Toll Free: 855.668.8722
Fax: 905.827.6402
canada.inquires@bio-techne.com

Bio-Techne Ltd

19 Barton Lane
Abingdon Science Park
Abingdon, OX14 3NB, United Kingdom
Phone: (44) (0) 1235 529449
Free Phone: 0800 37 34 15
Fax: (44) (0) 1235 533420
info.EMEA@bio-techne.com

General Contact Information

www.novusbio.com
Technical Support: nb-technical@bio-techne.com
Orders: nb-customerservice@bio-techne.com
General: novus@novusbio.com

Products Related to NB100-690

NBL1-17428	Tubulin alpha-1B Overexpression Lysate
HAF007	Goat anti-Mouse IgG Secondary Antibody [HRP]
NB720-B	Rabbit anti-Mouse IgG (H+L) Secondary Antibody [Biotin]
NBP1-43319-0.5mg	Mouse IgG1 Kappa Isotype Control (P3.6.2.8.1)

Limitations

This product is for research use only and is not approved for use in humans or in clinical diagnosis. Primary Antibodies are guaranteed for 1 year from date of receipt.

For more information on our 100% guarantee, please visit www.novusbio.com/guarantee

Earn gift cards/discounts by submitting a review: www.novusbio.com/reviews/submit/NB100-690

Earn gift cards/discounts by submitting a publication using this product:
www.novusbio.com/publications

