

# Product Datasheet

## Host Cell Factor 1/HCFC1 Antibody NB100-68210

Unit Size: 0.1 ml

Store at 4C. Do not freeze.

[www.novusbio.com](http://www.novusbio.com)



[technical@novusbio.com](mailto:technical@novusbio.com)

**Reviews: 1 Publications: 2**

Protocols, Publications, Related Products, Reviews, Research Tools and Images at:  
[www.novusbio.com/NB100-68210](http://www.novusbio.com/NB100-68210)

Updated 9/9/2025 v.20.1

**Earn rewards for product  
reviews and publications.**

Submit a publication at [www.novusbio.com/publications](http://www.novusbio.com/publications)

Submit a review at [www.novusbio.com/reviews/destination/NB100-68210](http://www.novusbio.com/reviews/destination/NB100-68210)



**NB100-68210**

## Host Cell Factor 1/HCFC1 Antibody

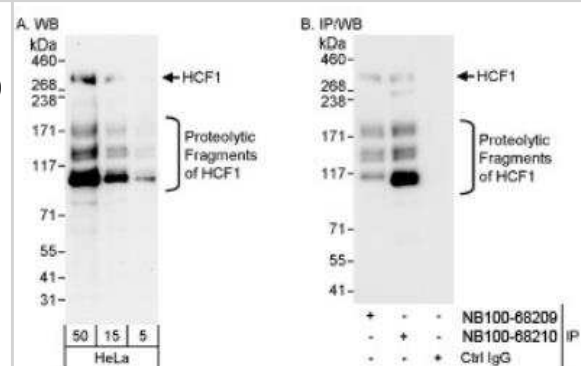
Product Information	
Unit Size	0.1 ml
Concentration	0.2 mg/ml
Storage	Store at 4C. Do not freeze.
Clonality	Polyclonal
Preservative	0.09% Sodium Azide
Isotype	IgG
Purity	Immunogen affinity purified
Buffer	TBS and 0.1% BSA

Product Description	
Description	Novus Biologicals Rabbit Host Cell Factor 1/HCFC1 Antibody (NB100-68210) is a polyclonal antibody validated for use in WB, Simple Western and IP. Anti-Host Cell Factor 1/HCFC1 Antibody: Cited in 2 publications. All Novus Biologicals antibodies are covered by our 100% guarantee.
Host	Rabbit
Gene ID	3054
Gene Symbol	HCFC1
Species	Human, Mouse
Immunogen	The immunogen recognized by this antibody maps to a region between residue 1985 and 2035 of human host cell factor C1 (VP16-accessory protein) using the numbering given in entry NP_005325.2 (GeneID 3054).

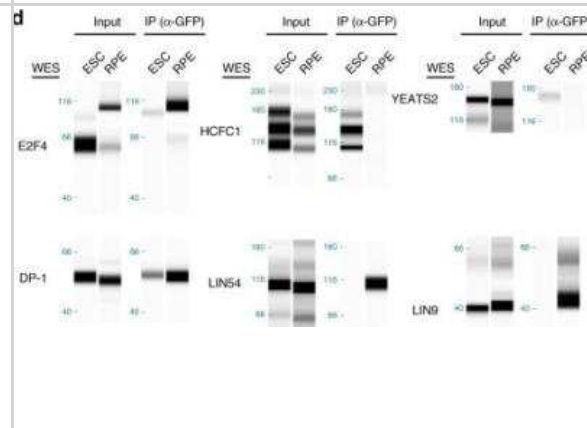
Product Application Details	
Applications	Western Blot, Simple Western, Immunoprecipitation
Recommended Dilutions	Western Blot 1:2000-1:10000, Simple Western, Immunoprecipitation 2-5 ug/mg lysate
Application Notes	See <a href="#">Simple Western Antibody Database</a> for Simple Western validation: Tested in Mouse ES cells and Human RPE cells, separated by Size

## Images

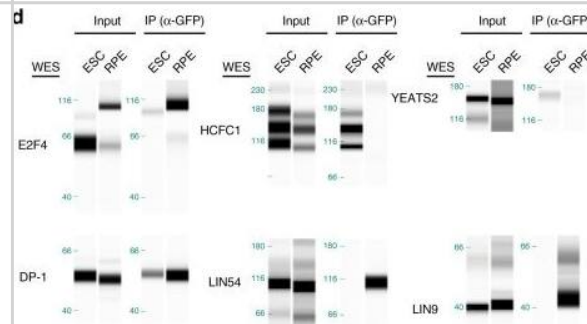
Western Blot: Host Cell Factor 1/HCF1 Antibody [NB100-68210] - Detection of Human HCF1 on HeLa whole cell lysate using 100-68210. HCF1 was also immunoprecipitated by rabbit anti-HCF1 antibody NB100-68209.



Simple Western: Host Cell Factor 1/HCF1 Antibody [NB100-68210] - Transcriptional activation by E2F4 in mouse ES cells is mediated by chromatin modifiers. Validation of interactions between GFP-E2F4 and DP-1, Host Cell Factor 1/HCF1, YEATS2, LIN54, and LIN9, by co-immunoprecipitation followed by immunoassay, in mouse ES cells and human RPE cells. Transcriptional activators (Host Cell Factor 1/HCF1 and YEATS2) preferentially bind to E2F4 in mouse ES cells while members of the DREAM repressor complex (LIN54 and LIN9) bind preferentially to E2F4 in RPE cells. Molecular weights (kDa) are indicated on the left side (one experiment shown of at least two experiments) Image collected and cropped by CiteAb from the following publication (<https://www.nature.com/articles/s41467-019-10901-x>), licensed under a CC-BY license.



Western Blot: Host Cell Factor 1/HCF1 Antibody [NB100-68210] - Transcriptional activation by E2F4 in mouse ES cells is mediated by chromatin modifiers. a Schematic representation of the affinity purification-mass spectrometry approach to identify the E2F4 interactome. b Silver stain of eluted fractions from RPE cells and mouse ES cells. Slices of gel were subjected to mass spectrometry, & the indicated protein bands were identified by analyzing the proteins enriched in each slice. c GO terms for cellular components enriched in the list of mouse ES cell-specific candidate interactors. d Validation of interactions between GFP-E2F4 & DP-1, HCF1, YEATS2, LIN54, & LIN9, by co-immunoprecipitation followed by immunoassay, in mouse ES cells & human RPE cells. Transcriptional activators (HCF1 & YEATS2) preferentially bind to E2F4 in mouse ES cells while members of the DREAM repressor complex (LIN54 & LIN9) bind preferentially to E2F4 in RPE cells. Molecular weights (kDa) are indicated on the left side (one experiment shown of at least two experiments) Image collected & cropped by CiteAb from the following publication (<https://pubmed.ncbi.nlm.nih.gov/31270324>), licensed under a CC-BY license. Not internally tested by Novus Biologicals.



## Publications

Hsu J, Arand J, Chaikovsky A et al. E2F4 regulates transcriptional activation in mouse embryonic stem cells independently of the RB family Nat Commun 2019-07-03 [PMID: 31270324] (WB, Mouse)

Yu H, Mashtalir N, Daou S et al. The ubiquitin carboxyl hydrolase BAP1 forms a ternary complex with YY1 and HCF-1 and is a critical regulator of gene expression. Mol Cell Biol 2010-11-01 [PMID: 20805357]



### **Novus Biologicals USA**

10730 E. Briarwood Avenue  
Centennial, CO 80112  
USA  
Phone: 303.730.1950  
Toll Free: 1.888.506.6887  
Fax: 303.730.1966  
nb-customerservice@bio-techne.com

### **Bio-Techne Canada**

21 Canmotor Ave  
Toronto, ON M8Z 4E6  
Canada  
Phone: 905.827.6400  
Toll Free: 855.668.8722  
Fax: 905.827.6402  
canada.inquires@bio-techne.com

### **Bio-Techne Ltd**

19 Barton Lane  
Abingdon Science Park  
Abingdon, OX14 3NB, United Kingdom  
Phone: (44) (0) 1235 529449  
Free Phone: 0800 37 34 15  
Fax: (44) (0) 1235 533420  
info.EMEA@bio-techne.com

### **General Contact Information**

www.novusbio.com  
Technical Support: nb-technical@bio-techne.com  
Orders: nb-customerservice@bio-techne.com  
General: novus@novusbio.com

### **Products Related to NB100-68210**

---

NBP2-33376H	Blue Marker Antibody (6F4-F6) [HRP]
HAF008	Goat anti-Rabbit IgG Secondary Antibody [HRP]
NB7160	Goat anti-Rabbit IgG (H+L) Secondary Antibody [HRP]
NBP2-24891	Rabbit IgG Isotype Control

---

### **Limitations**

This product is for research use only and is not approved for use in humans or in clinical diagnosis. Primary Antibodies are guaranteed for 1 year from date of receipt.

For more information on our 100% guarantee, please visit [www.novusbio.com/guarantee](http://www.novusbio.com/guarantee)

Earn gift cards/discounts by submitting a review: [www.novusbio.com/reviews/submit/NB100-68210](http://www.novusbio.com/reviews/submit/NB100-68210)

Earn gift cards/discounts by submitting a publication using this product:  
[www.novusbio.com/publications](http://www.novusbio.com/publications)

