

# Product Datasheet

## Lactate Dehydrogenase C Antibody NB100-68160

Unit Size: 0.1 mg

Store at -20C. Avoid freeze-thaw cycles.

[www.novusbio.com](http://www.novusbio.com)



[technical@novusbio.com](mailto:technical@novusbio.com)

### Publications: 1

Protocols, Publications, Related Products, Reviews, Research Tools and Images at:  
[www.novusbio.com/NB100-68160](http://www.novusbio.com/NB100-68160)

Updated 9/9/2025 v.20.1

Earn rewards for product  
reviews and publications.

Submit a publication at [www.novusbio.com/publications](http://www.novusbio.com/publications)

Submit a review at [www.novusbio.com/reviews/destination/NB100-68160](http://www.novusbio.com/reviews/destination/NB100-68160)



**NB100-68160****Lactate Dehydrogenase C Antibody**

<b>Product Information</b>	
<b>Unit Size</b>	0.1 mg
<b>Concentration</b>	0.5 mg/ml
<b>Storage</b>	Store at -20C. Avoid freeze-thaw cycles.
<b>Clonality</b>	Polyclonal
<b>Preservative</b>	0.02% Sodium Azide
<b>Isotype</b>	IgG
<b>Purity</b>	Immunogen affinity purified
<b>Buffer</b>	Tris saline (20 mM Tris pH 7.3, 150 mM NaCl), 0.5% BSA

<b>Product Description</b>	
<b>Description</b>	Novus Biologicals Goat Lactate Dehydrogenase C Antibody (NB100-68160) is a polyclonal antibody validated for use in IHC, WB and ELISA. Anti-Lactate Dehydrogenase C Antibody: Cited in 1 publication. All Novus Biologicals antibodies are covered by our 100% guarantee.
<b>Host</b>	Goat
<b>Gene ID</b>	3948
<b>Gene Symbol</b>	LDHC
<b>Species</b>	Human, Mouse
<b>Specificity/Sensitivity</b>	Both variants represent identical product (NP_002292.1 and NP_059144.1).
<b>Immunogen</b>	Peptide with sequence C-DSDKEHWKKNVHKQ corresponding to internal region according to NP_002292.1, NP_059144.1.

<b>Product Application Details</b>	
<b>Applications</b>	Western Blot, Immunohistochemistry-Paraffin, Immunohistochemistry, Peptide ELISA
<b>Recommended Dilutions</b>	Western Blot 0.3-1 ug/ml, Immunohistochemistry 5-6 ug/ml, Immunohistochemistry-Paraffin 5-6 ug/ml, Peptide ELISA Detection limit 1:1000
<b>Application Notes</b>	Western blot: Approx 35kDa band observed in Mouse Testis lysates (calculated MW of 35.9kDa according to Mouse NP_038608.1). Primary incubation was 1 hour.

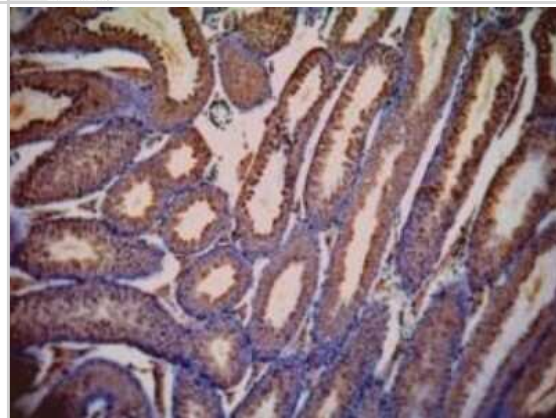


## Images

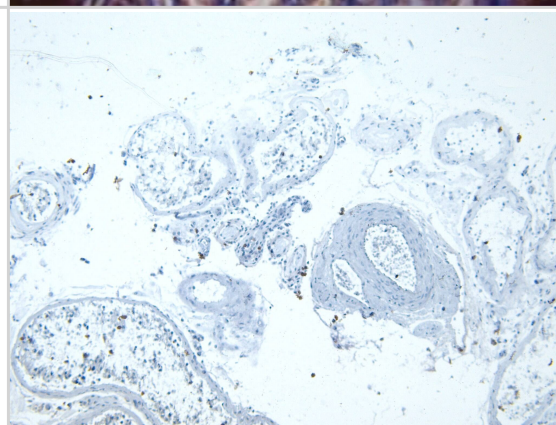
Western Blot: Lactate Dehydrogenase C Antibody [NB100-68160] - (1ug/ml) staining of Mouse Testes lysate (35ug protein in RIPA buffer). Primary incubation was 1 hour. Detected by chemiluminescence.

250kDa  
150kDa  
100kDa  
75kDa  
50kDa  
37kDa  
25kDa  
20kDa  
15kDa

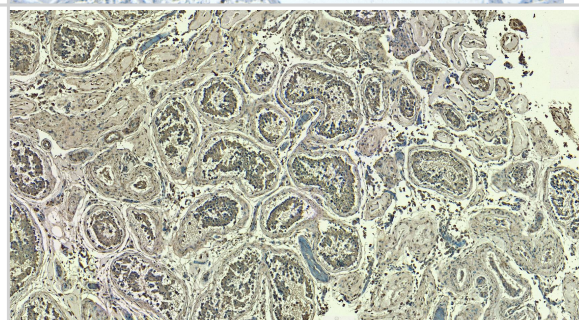
Immunohistochemistry-Paraffin: Lactate Dehydrogenase C Antibody [NB100-68160] - Staining of Mouse Testis. (1ug/ml). Data kindly provided by Dr. Erwin Goldberg, Northwestern University, Evanston, IL USA.



Immunohistochemistry-Paraffin: Lactate Dehydrogenase C Antibody [NB100-68160] - Negative Control showing staining of paraffin embedded Human Testis, with no primary antibody.



Immunohistochemistry-Paraffin: Lactate Dehydrogenase C Antibody [NB100-68160] - (5ug/ml) staining of paraffin embedded Human Testis. Heat induced antigen retrieval with citrate buffer pH 6, HRP-staining.



## Publications

Mazzotta S, Guerranti R, Gozzetti A et al. Increased serum lactate dehydrogenase isoenzymes in Ph-negative chronic myeloproliferative diseases: a metabolic adaptation? Hematology 2006-08-01 [PMID: 17178662]



### Novus Biologicals USA

10730 E. Briarwood Avenue  
Centennial, CO 80112  
USA  
Phone: 303.730.1950  
Toll Free: 1.888.506.6887  
Fax: 303.730.1966  
nb-customerservice@bio-techne.com

### Bio-Techne Canada

21 Canmotor Ave  
Toronto, ON M8Z 4E6  
Canada  
Phone: 905.827.6400  
Toll Free: 855.668.8722  
Fax: 905.827.6402  
canada.inquires@bio-techne.com

### Bio-Techne Ltd

19 Barton Lane  
Abingdon Science Park  
Abingdon, OX14 3NB, United Kingdom  
Phone: (44) (0) 1235 529449  
Free Phone: 0800 37 34 15  
Fax: (44) (0) 1235 533420  
info.EMEA@bio-techne.com

### General Contact Information

www.novusbio.com  
Technical Support: nb-technical@bio-techne.com  
Orders: nb-customerservice@bio-techne.com  
General: novus@novusbio.com

### Products Related to NB100-68160

---

NBL1-12473	Lactate Dehydrogenase C Overexpression Lysate
NBP2-33376H	Blue Marker Antibody (6F4-F6) [HRP]
HAF017	Rabbit anti-Goat IgG Secondary Antibody [HRP (Horseradish Peroxidase)]
HAF109	Donkey anti-Goat IgG Secondary Antibody [HRP (Horseradish Peroxidase)]
NB410-28088-1mg	Goat IgG Isotype Control

---

### Limitations

This product is for research use only and is not approved for use in humans or in clinical diagnosis. Primary Antibodies are guaranteed for 1 year from date of receipt.

For more information on our 100% guarantee, please visit [www.novusbio.com/guarantee](http://www.novusbio.com/guarantee)

Earn gift cards/discounts by submitting a review: [www.novusbio.com/reviews/submit/NB100-68160](http://www.novusbio.com/reviews/submit/NB100-68160)

Earn gift cards/discounts by submitting a publication using this product:  
[www.novusbio.com/publications](http://www.novusbio.com/publications)



