

Product Datasheet

Complement Component C5aR1 Antibody (P12/1) - BSA Free NB100-66539

Unit Size: 0.1 mg

Store at 4C short term. Aliquot and store at -20C long term. Avoid freeze-thaw cycles.

www.novusbio.com



technical@novusbio.com

Protocols, Publications, Related Products, Reviews, Research Tools and Images at:
www.novusbio.com/NB100-66539

Updated 9/9/2025 v.20.1

Earn rewards for product reviews and publications.

Submit a publication at www.novusbio.com/publications

Submit a review at www.novusbio.com/reviews/destination/NB100-66539



NB100-66539

Complement Component C5aR1 Antibody (P12/1) - BSA Free

Product Information	
Unit Size	0.1 mg
Concentration	1 mg/ml
Storage	Store at 4C short term. Aliquot and store at -20C long term. Avoid freeze-thaw cycles.
Clonality	Monoclonal
Clone	P12/1
Preservative	0.09% Sodium Azide
Isotype	IgG2a
Purity	Protein A purified
Buffer	PBS

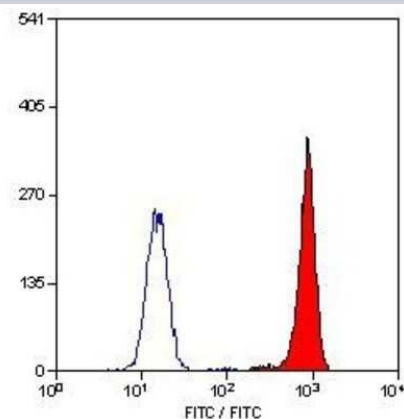
Product Description	
Description	Novus Biologicals Mouse Complement Component C5aR1 Antibody (P12/1) - BSA Free (NB100-66539) is a monoclonal antibody validated for use in IHC, WB and Flow. All Novus Biologicals antibodies are covered by our 100% guarantee.
Host	Mouse
Gene ID	728
Gene Symbol	C5AR1
Species	Human
Reactivity Notes	Predicted cross-reactivities: Rhesus Monkey
Specificity/Sensitivity	Recognizes the C5a receptor (C5aR) CD88, which is predominantly expressed on cells of the myeloid lineage. Clone P12/1 was raised against a synthetic peptide comprising the N-terminal extracellular domain of the C5aR (met1-Asn31). Clone P12/1 does not inhibit the binding of C5a to its receptor.
Immunogen	C5aR - peptide: Met1 - Asn31

Product Application Details	
Applications	Western Blot, Immunohistochemistry-Paraffin, Flow Cytometry, Immunohistochemistry, Immunohistochemistry-Frozen
Recommended Dilutions	Western Blot 1:100-1:2000, Flow Cytometry 1:50-1:100, Immunohistochemistry 1:10-1:500, Immunohistochemistry-Paraffin 1:10-1:500, Immunohistochemistry-Frozen 1:10-1:500

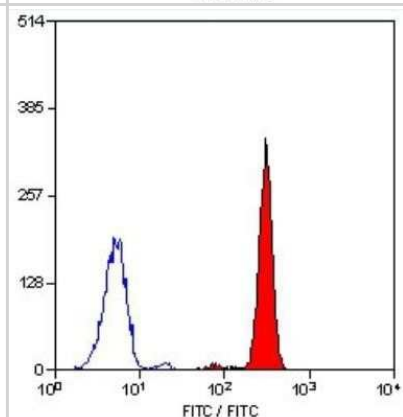


Images

Flow Cytometry: Complement Component C5a R1 Antibody (P12/1) [NB100-66539] - Staining of human peripheral blood granulocytes with MOUSE ANTI HUMAN CD88 (NB100-66539).



Flow Cytometry: Complement Component C5a R1 Antibody (P12/1) [NB100-66539] - Staining of human peripheral blood granulocytes with MOUSE ANTI HUMAN CD88: FITC.





Novus Biologicals USA

10730 E. Briarwood Avenue
Centennial, CO 80112
USA
Phone: 303.730.1950
Toll Free: 1.888.506.6887
Fax: 303.730.1966
nb-customerservice@bio-techne.com

Bio-Techne Canada

21 Canmotor Ave
Toronto, ON M8Z 4E6
Canada
Phone: 905.827.6400
Toll Free: 855.668.8722
Fax: 905.827.6402
canada.inquires@bio-techne.com

Bio-Techne Ltd

19 Barton Lane
Abingdon Science Park
Abingdon, OX14 3NB, United Kingdom
Phone: (44) (0) 1235 529449
Free Phone: 0800 37 34 15
Fax: (44) (0) 1235 533420
info.EMEA@bio-techne.com

General Contact Information

www.novusbio.com
Technical Support: nb-technical@bio-techne.com
Orders: nb-customerservice@bio-techne.com
General: novus@novusbio.com

Products Related to NB100-66539

NBL1-08482	Complement Component C5aR1 Overexpression Lysate
HAF007	Goat anti-Mouse IgG Secondary Antibody [HRP]
NB720-B	Rabbit anti-Mouse IgG (H+L) Secondary Antibody [Biotin]
NBP1-96778	Mouse IgG2a Isotype Control (M2A)

Limitations

This product is for research use only and is not approved for use in humans or in clinical diagnosis. Primary Antibodies are guaranteed for 1 year from date of receipt.

For more information on our 100% guarantee, please visit www.novusbio.com/guarantee

Earn gift cards/discounts by submitting a review: www.novusbio.com/reviews/submit/NB100-66539

Earn gift cards/discounts by submitting a publication using this product:
www.novusbio.com/publications

