

# Product Datasheet

## Endoglin/CD105 Antibody (SN6) - BSA Free NB100-65601

Unit Size: 0.1 mg

Store at 4C short term. Aliquot and store at -20C long term. Avoid freeze-thaw cycles.

[www.novusbio.com](http://www.novusbio.com)



[technical@novusbio.com](mailto:technical@novusbio.com)

### Publications: 1

Protocols, Publications, Related Products, Reviews, Research Tools and Images at:  
[www.novusbio.com/NB100-65601](http://www.novusbio.com/NB100-65601)

Updated 9/9/2025 v.20.1

Earn rewards for product  
reviews and publications.

Submit a publication at [www.novusbio.com/publications](http://www.novusbio.com/publications)

Submit a review at [www.novusbio.com/reviews/destination/NB100-65601](http://www.novusbio.com/reviews/destination/NB100-65601)



**NB100-65601**

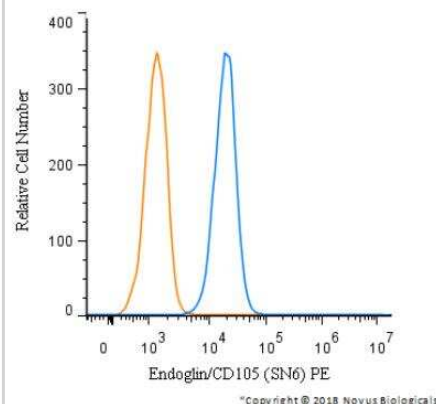
Endoglin/CD105 Antibody (SN6) - BSA Free

<b>Product Information</b>	
<b>Unit Size</b>	0.1 mg
<b>Concentration</b>	1 mg/ml
<b>Storage</b>	Store at 4C short term. Aliquot and store at -20C long term. Avoid freeze-thaw cycles.
<b>Clonality</b>	Monoclonal
<b>Clone</b>	SN6
<b>Preservative</b>	0.09% Sodium Azide
<b>Isotype</b>	IgG1
<b>Purity</b>	Protein G purified
<b>Buffer</b>	PBS
<b>Product Description</b>	
<b>Description</b>	Novus Biologicals Mouse Endoglin/CD105 Antibody (SN6) - BSA Free (NB100-65601) is a monoclonal antibody validated for use in IHC, WB, Flow and IP. All Novus Biologicals antibodies are covered by our 100% guarantee.
<b>Host</b>	Mouse
<b>Gene ID</b>	2022
<b>Gene Symbol</b>	ENG
<b>Species</b>	Human
<b>Reactivity Notes</b>	Predicted cross-reactivities: Cynomolgus monkey, Equine, Primate, Rhesus Monkey
<b>Marker</b>	Neo-endothelial Cells Marker
<b>Specificity/Sensitivity</b>	Recognizes the human CD105 cell surface antigen, a glycoprotein homodimer of 95kD subunits. CD105 is also known as endoglin, and is expressed by endothelial cells, activated monocytes and some leukemia cells.
<b>Immunogen</b>	Partially purified cell membrane antigens from fresh leukemia cells
<b>Product Application Details</b>	
<b>Applications</b>	Western Blot, Flow Cytometry, Immunohistochemistry, Immunohistochemistry-Frozen, Immunoprecipitation
<b>Recommended Dilutions</b>	Western Blot 1:100 - 1:2000, Flow Cytometry 1:50, Immunohistochemistry 1:10 - 1:500, Immunoprecipitation 1:10 - 1:500, Immunohistochemistry-Frozen 1:10 - 1:500
<b>Application Notes</b>	The epitope recognised by this antibody is reported to be sensitive to formaldehyde fixation and tissue processing. The use of acetone fixation for frozen sections is recommended.

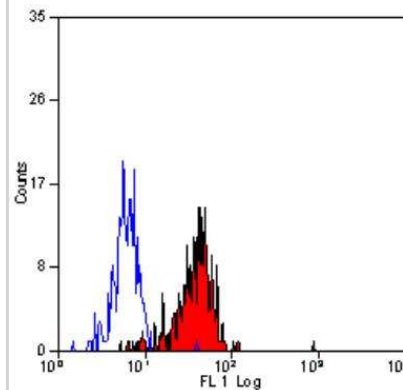


## Images

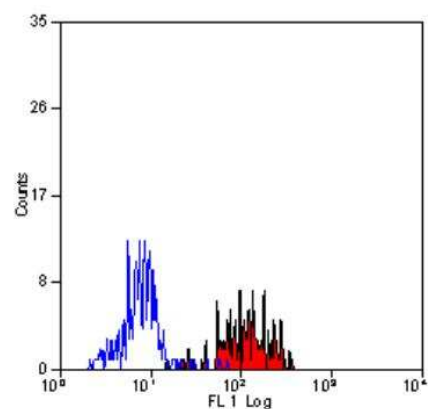
Flow Cytometry: Endoglin/CD105 Antibody (SN6) [NB100-65601] - A surface stain was performed on HeLa cells with Endoglin/CD105 Antibody (SN6) NB100-65601PE and a matched isotype control. Cells were incubated in an antibody dilution of 2.5 ug/mL for 20 minutes at room temperature. Both antibodies were conjugated to Phycoerythrin.



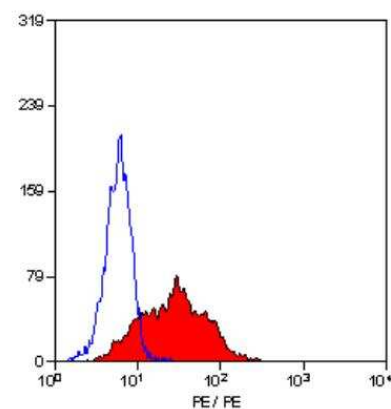
Flow Cytometry: Endoglin/CD105 Antibody (SN6) [NB100-65601] - Staining of human peripheral blood monocytes with Mouse anti Human CD105:Alexa Fluor 488



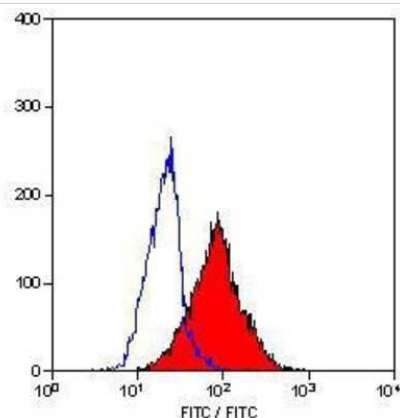
Flow Cytometry: Endoglin/CD105 Antibody (SN6) [NB100-65601] - Staining of human peripheral blood monocytes with Mouse anti Human CD105:Alexa Fluor 647



Flow Cytometry: Endoglin/CD105 Antibody (SN6) [NB100-65601] - Staining of KG1 cells with Mouse anti Human CD105RPE



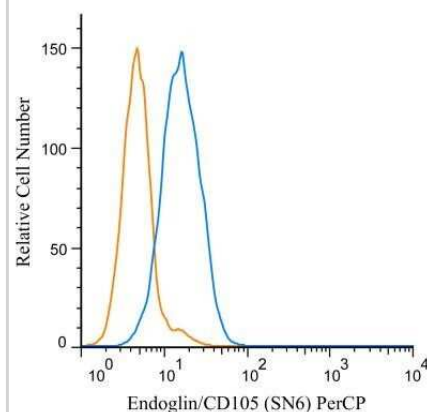
Flow Cytometry: Endoglin/CD105 Antibody (SN6) [NB100-65601] - Staining of KG1 cells with Mouse anti Human CD105



Flow Cytometry: Endoglin/CD105 Antibody (SN6) [NB100-65601] - Analysis using the FITC conjugate of NB100-65601. Staining of KG1 cells.



Flow Cytometry: Endoglin/CD105 Antibody (SN6) [NB100-65601] - A cell surface stain was performed on HeLa cells with Endoglin/CD105 antibody (SN6) NB100-65601PCP (blue) and a matched isotype control NBP2-27287AF647 (orange). Cells were incubated in an antibody dilution of 5 ug/mL for 20 minutes at room temperature. Both antibodies were conjugated to Peridinin-Chlorophyll-Protein complex.



## Publications

Cavalcanti BN. Pulp biology: aggression repair. Thesis. 2014-01-01 (WB, Human)

### Details:

Endoglin/CD105 antibody used for WB on lysates of unselected pulp cell populations (uDPC) and selected dental pulp stem cells (sDPC) isolated from a single extracted third molar of human patient (Figure 2B)



### **Novus Biologicals USA**

10730 E. Briarwood Avenue  
Centennial, CO 80112  
USA  
Phone: 303.730.1950  
Toll Free: 1.888.506.6887  
Fax: 303.730.1966  
nb-customerservice@bio-techne.com

### **Bio-Techne Canada**

21 Canmotor Ave  
Toronto, ON M8Z 4E6  
Canada  
Phone: 905.827.6400  
Toll Free: 855.668.8722  
Fax: 905.827.6402  
canada.inquires@bio-techne.com

### **Bio-Techne Ltd**

19 Barton Lane  
Abingdon Science Park  
Abingdon, OX14 3NB, United Kingdom  
Phone: (44) (0) 1235 529449  
Free Phone: 0800 37 34 15  
Fax: (44) (0) 1235 533420  
info.EMEA@bio-techne.com

### **General Contact Information**

www.novusbio.com  
Technical Support: nb-technical@bio-techne.com  
Orders: nb-customerservice@bio-techne.com  
General: novus@novusbio.com

### **Products Related to NB100-65601**

---

NBL1-10266	Endoglin/CD105 Overexpression Lysate
NBP2-33376H	Blue Marker Antibody (6F4-F6) [HRP]
HAF007	Goat anti-Mouse IgG Secondary Antibody [HRP]
NB7539	Goat anti-Mouse IgG (H+L) Secondary Antibody [HRP]
NBP1-97005-0.5mg	Mouse IgG1 Isotype Control (MG1)

---

### **Limitations**

This product is for research use only and is not approved for use in humans or in clinical diagnosis. Primary Antibodies are guaranteed for 1 year from date of receipt.

For more information on our 100% guarantee, please visit [www.novusbio.com/guarantee](http://www.novusbio.com/guarantee)

Earn gift cards/discounts by submitting a review: [www.novusbio.com/reviews/submit/NB100-65601](http://www.novusbio.com/reviews/submit/NB100-65601)

Earn gift cards/discounts by submitting a publication using this product:  
[www.novusbio.com/publications](http://www.novusbio.com/publications)

