

Product Datasheet

CD1b Antibody (CC20) - BSA Free NB100-65315

Unit Size: 0.125 mg

Store at 4C short term. Aliquot and store at -20C long term. Avoid freeze-thaw cycles.

www.novusbio.com



technical@novusbio.com

Protocols, Publications, Related Products, Reviews, Research Tools and Images at:
www.novusbio.com/NB100-65315

Updated 9/9/2025 v.20.1

Earn rewards for product
reviews and publications.

Submit a publication at www.novusbio.com/publications

Submit a review at www.novusbio.com/reviews/destination/NB100-65315



NB100-65315

CD1b Antibody (CC20) - BSA Free

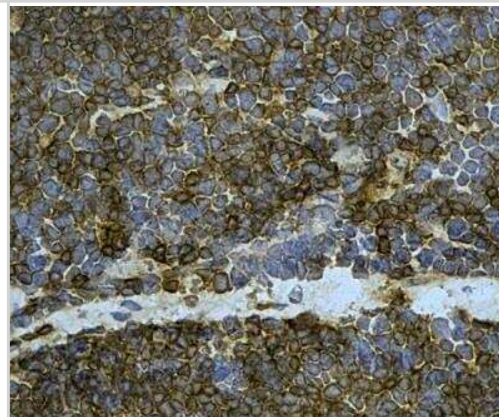
Product Information	
Unit Size	0.125 mg
Concentration	1.0 mg/ml
Storage	Store at 4C short term. Aliquot and store at -20C long term. Avoid freeze-thaw cycles.
Clonality	Monoclonal
Clone	CC20
Preservative	0.09% Sodium Azide
Isotype	IgG2a
Purity	Protein A purified
Buffer	PBS

Product Description	
Description	Novus Biologicals Mouse CD1b Antibody (CC20) - BSA Free (NB100-65315) is a monoclonal antibody validated for use in IHC, Flow and IP. All Novus Biologicals antibodies are covered by our 100% guarantee.
Host	Mouse
Gene ID	910
Gene Symbol	CD1B
Species	Bovine
Reactivity Notes	Predicted cross-reactivities: Sheep, Equine, Goat, Dog, Feline
Specificity/Sensitivity	Recognizes the bovine CD1w2 cell surface antigen, a glycoprotein heterodimer of 12kD and 46kD. CD1w2 is expressed by cortical thymocytes and a minority of medullary thymocytes, with a pattern similar to antibodies of the CD1b cluster in humans.
Immunogen	Made to Bovine CD1w2

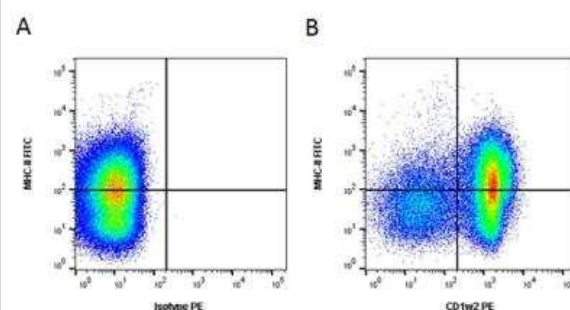
Product Application Details	
Applications	Flow Cytometry, Immunohistochemistry, Immunohistochemistry-Frozen, Immunoprecipitation
Recommended Dilutions	Flow Cytometry 1:25-1:50, Immunohistochemistry 1:10-1:500, Immunoprecipitation 1:10-1:500, Immunohistochemistry-Frozen 1:10-1:500

Images

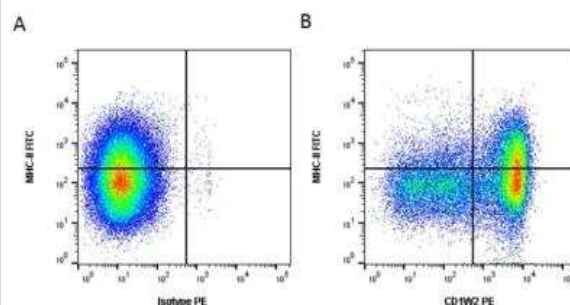
Immunohistochemistry: CD1b Antibody (CC20) [NB100-65315] - Detection of Mouse anti Bovine CD1w2 in an analysis on acetone-fixed frozen bovine thymus using the Histar detection system, original magnification x60.



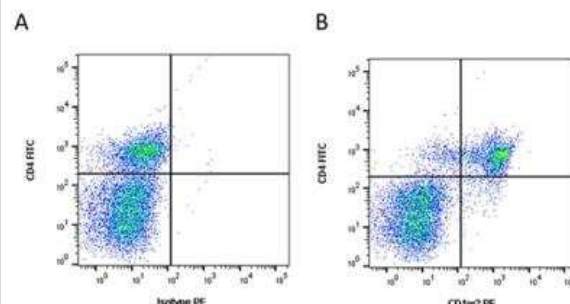
Flow Cytometry: CD1b Antibody (CC20) [NB100-65315] - Figure A. FITC conjugated Mouse anti Bovine MHC Class II Monomorphic Antibody and Mouse IgG2a isotype control conjugated with Rabbit F(ab')₂ anti Mouse IgG:RPE Antibody. Figure B. FITC conjugated Mouse anti Bovine MHC Class II Monomorphic Antibody and Mouse anti Bovine CD1w2 Antibody conjugated with Rabbit F(ab')₂ anti Mouse IgG:RPE Antibody.



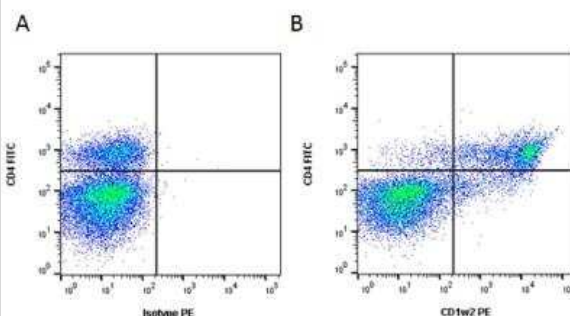
Flow Cytometry: CD1b Antibody (CC20) [NB100-65315] - Figure A. FITC conjugated Mouse anti Bovine MHC Class II Monomorphic Antibody and RPE conjugated Mouse IgG2a isotype control. Figure B. FITC conjugated Mouse anti Bovine MHC Class II Monomorphic Antibody and RPE conjugated Mouse anti Bovine CD1w2 Antibody. All experiments performed on bovine thymocytes in the presence of 10% bovine serum and gated on live, single cell thymocytes.



Flow Cytometry: CD1b Antibody (CC20) [NB100-65315] - Figure A. FITC conjugated Mouse anti Bovine CD4 Antibody and Mouse IgG2a isotype control conjugated with Rabbit F(ab')₂ anti Mouse IgG:RPE Antibody. Figure B. FITC conjugated Mouse anti Bovine CD4 Antibody and Mouse anti Bovine CD1w2 Antibody conjugated with Rabbit F(ab')₂ anti Mouse IgG:RPE Antibody.



Flow Cytometry: CD1b Antibody (CC20) [NB100-65315] - Figure A. FITC conjugated Mouse anti Bovine CD4 Antibody and RPE conjugated Mouse IgG2a isotype control. Figure B. FITC conjugated Mouse anti Bovine CD4 Antibody and RPE conjugated Mouse anti Bovine CD1w2 Antibody.





Novus Biologicals USA

10730 E. Briarwood Avenue
Centennial, CO 80112
USA
Phone: 303.730.1950
Toll Free: 1.888.506.6887
Fax: 303.730.1966
nb-customerservice@bio-techne.com

Bio-Techne Canada

21 Canmotor Ave
Toronto, ON M8Z 4E6
Canada
Phone: 905.827.6400
Toll Free: 855.668.8722
Fax: 905.827.6402
canada.inquires@bio-techne.com

Bio-Techne Ltd

19 Barton Lane
Abingdon Science Park
Abingdon, OX14 3NB, United Kingdom
Phone: (44) (0) 1235 529449
Free Phone: 0800 37 34 15
Fax: (44) (0) 1235 533420
info.EMEA@bio-techne.com

General Contact Information

www.novusbio.com
Technical Support: nb-technical@bio-techne.com
Orders: nb-customerservice@bio-techne.com
General: novus@novusbio.com

Products Related to NB100-65315

HAF007	Goat anti-Mouse IgG Secondary Antibody [HRP]
NB7539	Goat anti-Mouse IgG (H+L) Secondary Antibody [HRP]
NBP1-96778	Mouse IgG2a Isotype Control (M2A)
NB100-65315UV	CD1b Antibody (CC20) [DyLight 350]

Limitations

This product is for research use only and is not approved for use in humans or in clinical diagnosis. Primary Antibodies are guaranteed for 1 year from date of receipt.

For more information on our 100% guarantee, please visit www.novusbio.com/guarantee

Earn gift cards/discounts by submitting a review: www.novusbio.com/reviews/submit/NB100-65315

Earn gift cards/discounts by submitting a publication using this product:
www.novusbio.com/publications

