

Product Datasheet

Syndecan-1/CD138 Antibody (B-A38)

NB100-64980-100ug

Unit Size: 100 ug

Store at 4C short term. Aliquot and store at -20C long term. Avoid freeze-thaw cycles.

www.novusbio.com



technical@novusbio.com

Publications: 17

Protocols, Publications, Related Products, Reviews, Research Tools and Images at:
www.novusbio.com/NB100-64980

Updated 9/9/2025 v.20.1

Earn rewards for product reviews and publications.

Submit a publication at www.novusbio.com/publications

Submit a review at www.novusbio.com/reviews/destination/NB100-64980

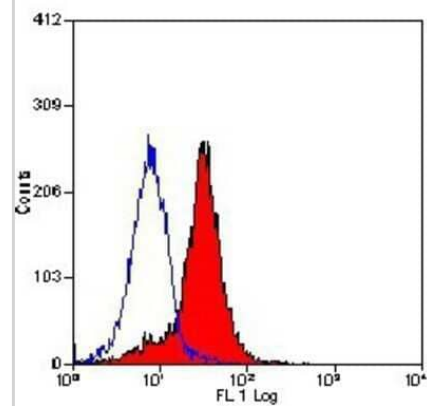


NB100-64980-100ug**Syndecan-1/CD138 Antibody (B-A38)**

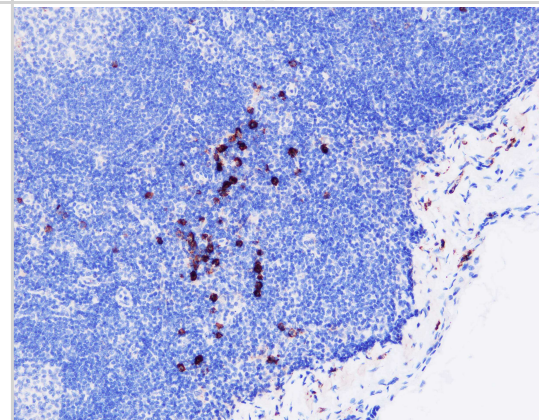
Product Information	
Unit Size	100 ug
Concentration	0.1 mg/ml
Storage	Store at 4C short term. Aliquot and store at -20C long term. Avoid freeze-thaw cycles.
Clonality	Monoclonal
Clone	B-A38
Preservative	0.09% Sodium Azide
Isotype	IgG1
Purity	Ion exchange chromatography
Buffer	PBS, 1% Bovine Serum Albumin
Product Description	
Description	Novus Biologicals Mouse Syndecan-1/CD138 Antibody (B-A38) (NB100-64980) is a monoclonal antibody validated for use in IHC, WB, Flow and ICC/IF. Anti-Syndecan-1/CD138 Antibody: Cited in 16 publications. All Novus Biologicals antibodies are covered by our 100% guarantee.
Host	Mouse
Gene ID	6382
Gene Symbol	SDC1
Species	Human
Specificity/Sensitivity	NB100-64980 recognizes a heparan sulfate rich membrane glycoprotein of 200kD known as Syndecan-1 (CD138). Syndecan functions as a receptor for collagen, fibronectin and thrombospondin. NB100-64980 stains all plasma cells and plasma cell lines. No staining of other leucocytes is seen in peripheral blood or bone marrow, although some ALL cell lines express the antigen weakly. Some staining of epithelial and endothelial cells may be seen in immunohistology.
Immunogen	U266 cell line
Product Application Details	
Applications	Western Blot, Immunohistochemistry-Paraffin, Flow Cytometry, Functional, Immunohistochemistry, Immunohistochemistry-Frozen
Recommended Dilutions	Western Blot 1:100-1:2000, Flow Cytometry Neat, Immunohistochemistry 1:10-1:500, Immunohistochemistry-Paraffin 1:100-1:500, Immunohistochemistry-Frozen 1:100-1:500, Functional
Application Notes	For Flow Cytometry: Use 10 ul of the suggested working dilution to label 10 ⁶ cells in 100 ul. For IHC: This product requires heat pre-treatment. Sodium citrate buffer pH 6.0 is recommended for this purpose.

Images

Flow Cytometry: Syndecan-1/CD138 Antibody (B-A38) [NB100-64980] - Staining of U266 cell line with MOUSE ANTI HUMAN CD138: FITC.



Immunohistochemistry-Paraffin: Mouse Monoclonal Syndecan-1/CD138 Antibody (B-A38) [NB100-64980] - Syndecan-1/CD138 analysis on human lymph node tissue. Heat induced epitope retrieval-basic. Primary antibody x500 (0.2ug/mL). Image from verified customer review.



Publications

Angelioudaki I, Katakaki A, Koniaris E, Tzingounis AG INTERCONNECTION OF EPITHELIAL-MESENCHYMAL TRANSITION AND SENESENCE IN PANCREATIC NEUROENDOCRINE LESIONS Thesis 2022-01-01

Lin SC, Wu CP, Tseng T, Jhang Y et al. Role of syndecan-1 and exogenous heparin in hepatoma sphere formation Biochem. Cell Biol. 2019-05-01 [PMID: 31042409]

Sharpe B, Algezei DA, Cattermole C et al. A subset of high Gleason grade prostate carcinomas contain a large burden of prostate cancer syndecan-1 positive stromal cells Prostate 2017-07-26 [PMID: 28744948] (ICC/IF, Human)

Wang C, Tseng T, Jhang Y et al. Loss of cell invasiveness through PKC-mediated syndecan-1 downregulation in melanoma cells under anchorage-independency. Exp Dermatol. 2014-09-18 [PMID: 25236603]

Li, K et al. Anaplastic lymphoma kinase-positive diffuse large B-cell lymphoma presenting as an isolated nasopharyngeal mass: a case report and review of literature. Int J Clin Exp Pathol 4: 190-6. 2010-01-01 [PMID: 21326807]

Beauvais, DM Rapraeger, AC. Syndecan-1 couples the insulin-like growth factor-1 receptor to inside-out integrin activation. J Cell Sci 123: 3796-807. 2010-01-01 [PMID: 20971705]

Thaunat, O et al. Chronic rejection triggers the development of an aggressive intragraft immune response through recapitulation of lymphoid organogenesis. J Immunol 185: 717-28. 2010-01-01 [PMID: 20525884]

Du, S et al. Systemic mastocytosis in association with chronic lymphocytic leukemia and plasma cell myeloma. Int J Clin Exp Pathol 3: 448-57. 2010-01-01 [PMID: 20490336]

Chang, H et al. CKS1B nuclear expression is inversely correlated with p27Kip1 expression and is predictive of an adverse survival in patients with multiple myeloma. 20421271 Haematologica. 95: 1542-7. 2010-01-01 [PMID: 20421271]

Kim, YC et al. Presence of Porphyromonas gingivalis and plasma cell dominance in gingival tissues with periodontitis. Oral Dis 16: 375-81. 2010-01-01 [PMID: 20233323]

Kylanpaa, L et al. Syndecan-1 and tenascin expression in cystic tumors of the pancreas. JOP 10: 378-82. 2009-01-01 [PMID: 19581738]

Beauvais, DM et al. Syndecan-1 regulates alphavbeta3 and alphavbeta5 integrin activation during angiogenesis and is blocked by synstatin, a novel peptide inhibitor. J Exp Med 206: 691-705. 2009-01-01 [PMID: 19255147]

More publications at <http://www.novusbio.com/NB100-64980>





Novus Biologicals USA

10730 E. Briarwood Avenue
Centennial, CO 80112
USA
Phone: 303.730.1950
Toll Free: 1.888.506.6887
Fax: 303.730.1966
nb-customerservice@bio-techne.com

Bio-Techne Canada

21 Canmotor Ave
Toronto, ON M8Z 4E6
Canada
Phone: 905.827.6400
Toll Free: 855.668.8722
Fax: 905.827.6402
canada.inquires@bio-techne.com

Bio-Techne Ltd

19 Barton Lane
Abingdon Science Park
Abingdon, OX14 3NB, United Kingdom
Phone: (44) (0) 1235 529449
Free Phone: 0800 37 34 15
Fax: (44) (0) 1235 533420
info.EMEA@bio-techne.com

General Contact Information

www.novusbio.com
Technical Support: nb-technical@bio-techne.com
Orders: nb-customerservice@bio-techne.com
General: novus@novusbio.com

Products Related to NB100-64980-100ug

NBP2-33376H	Blue Marker Antibody (6F4-F6) [HRP]
HAF007	Goat anti-Mouse IgG Secondary Antibody [HRP]
NB7539	Goat anti-Mouse IgG (H+L) Secondary Antibody [HRP]
NBP1-97005-0.5mg	Mouse IgG1 Isotype Control (MG1)

Limitations

This product is for research use only and is not approved for use in humans or in clinical diagnosis. Primary Antibodies are guaranteed for 1 year from date of receipt.

For more information on our 100% guarantee, please visit www.novusbio.com/guarantee

Earn gift cards/discounts by submitting a review: www.novusbio.com/reviews/submit/NB100-64980

Earn gift cards/discounts by submitting a publication using this product:
www.novusbio.com/publications

