

Product Datasheet

Complement Component C1qA Antibody (004-43.X (3R9/2)) - BSA Free NB100-64729

Unit Size: 0.05 ml

Store at 4C short term. Aliquot and store at -20C long term. Avoid freeze-thaw cycles.

www.novusbio.com



technical@novusbio.com

Publications: 6

Protocols, Publications, Related Products, Reviews, Research Tools and Images at:
www.novusbio.com/NB100-64729

Updated 9/9/2025 v.20.1

Earn rewards for product
reviews and publications.

Submit a publication at www.novusbio.com/publications

Submit a review at www.novusbio.com/reviews/destination/NB100-64729



NB100-64729

Complement Component C1qA Antibody (004-43.X (3R9/2)) - BSA Free

Product Information	
Unit Size	0.05 ml
Concentration	1.0 mg/ml
Storage	Store at 4C short term. Aliquot and store at -20C long term. Avoid freeze-thaw cycles.
Clonality	Monoclonal
Clone	004-43.X (3R9/2)
Preservative	<0.1% Sodium Azide
Isotype	IgG1
Purity	Protein A purified
Buffer	Borate buffered saline
Product Description	
Description	Novus Biologicals Mouse Complement Component C1qA Antibody (004-43.X (3R9/2)) - BSA Free (NB100-64729) is a monoclonal antibody validated for use in IHC, WB, ELISA and Flow. Anti-Complement Component C1qA Antibody: Cited in 6 publications. All Novus Biologicals antibodies are covered by our 100% guarantee.
Host	Mouse
Gene ID	712
Gene Symbol	C1QA
Species	Human
Specificity/Sensitivity	Recognizes human complement component 1 q (C1q), a 156kDa secreted protein.
Immunogen	Globular head domain of C1q, purified from human plasma
Product Application Details	
Applications	Western Blot, ELISA, Flow Cytometry, Immunohistochemistry, Immunohistochemistry-Frozen
Recommended Dilutions	Western Blot 1:100-1:2000, Flow Cytometry 1:10-1:1000, ELISA 1:100-1:2000, Immunohistochemistry 1:10-1:500, Immunohistochemistry-Frozen 1:500-1:1000

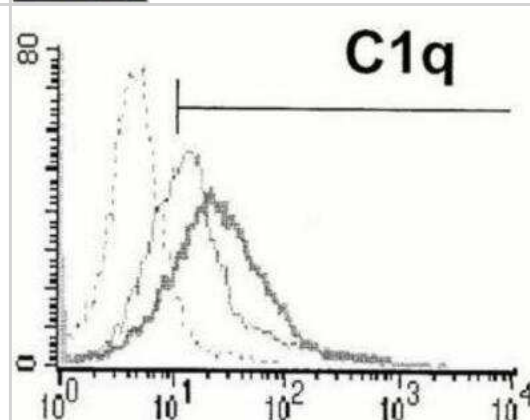


Images

Immunocytochemistry/Immunofluorescence: Complement Component C1qA Antibody (3R9/2) [NB100-64729] - C4d deposition in graft biopsies of patients with DGF. C4d (green, E) co-localized with C1QA (red, G) at peri-tubular capillary sites (merge, I). TO-PRO-3 (blue) was used to stain nuclei. Original magnifications were (E-J) x630.



Flow Cytometry: Complement Component C1qA Antibody (3R9/2) [NB100-64729]



Publications

Brandin AC, Meola SD, Mazzaferro EM. et Al. Respiratory arrest following ingestion of wild mushrooms in 3 dogs (2006-2011) J Vet Emerg Crit Care (San Antonio) 2014-08-21 [PMID: 24102893]

Kerr RL, Miller SA, Shoemaker RK et al. New type of Li ion conductor with 3D interconnected nanopores via polymerization of a liquid organic electrolyte-filled lyotropic liquid-crystal assembly. 2010-01-07 [PMID: 19839612]

Castellano, G et al. Therapeutic targeting of classical and lectin pathways of complement protects from ischemia-reperfusion-induced renal damage. 2010-01-01 [PMID: 20150432]

Gershov, D et al. C-Reactive protein binds to apoptotic cells, protects the cells from assembly of the terminal complement components, and sustains an antiinflammatory innate immune response: implications for systemic autoimmunity. 2000-01-01 [PMID: 11067883]

Petry, F. Molecular basis of hereditary C1q deficiency. 1998-01-01 [PMID: 9777412]

Moreno-Vinasco L, Gomberg-Maitl M, Maitl ML et al. Genomic assessment of a multikinase inhibitor, sorafenib, in a rodent model of pulmonary hypertension. *Physiol Genomics*;33(2):278-91. 2008-04-22 [PMID: 18303084]



Novus Biologicals USA

10730 E. Briarwood Avenue
Centennial, CO 80112
USA
Phone: 303.730.1950
Toll Free: 1.888.506.6887
Fax: 303.730.1966
nb-customerservice@bio-techne.com

Bio-Techne Canada

21 Canmotor Ave
Toronto, ON M8Z 4E6
Canada
Phone: 905.827.6400
Toll Free: 855.668.8722
Fax: 905.827.6402
canada.inquires@bio-techne.com

Bio-Techne Ltd

19 Barton Lane
Abingdon Science Park
Abingdon, OX14 3NB, United Kingdom
Phone: (44) (0) 1235 529449
Free Phone: 0800 37 34 15
Fax: (44) (0) 1235 533420
info.EMEA@bio-techne.com

General Contact Information

www.novusbio.com
Technical Support: nb-technical@bio-techne.com
Orders: nb-customerservice@bio-techne.com
General: novus@novusbio.com

Products Related to NB100-64729

NBL1-08337	C1q Overexpression Lysate
NBP2-33376H	Blue Marker Antibody (6F4-F6) [HRP]
HAF007	Goat anti-Mouse IgG Secondary Antibody [HRP]
NB7539	Goat anti-Mouse IgG (H+L) Secondary Antibody [HRP]
NBP1-97005-0.5mg	Mouse IgG1 Isotype Control (MG1)

Limitations

This product is for research use only and is not approved for use in humans or in clinical diagnosis. Primary Antibodies are guaranteed for 1 year from date of receipt.

For more information on our 100% guarantee, please visit www.novusbio.com/guarantee

Earn gift cards/discounts by submitting a review: www.novusbio.com/reviews/submit/NB100-64729

Earn gift cards/discounts by submitting a publication using this product:
www.novusbio.com/publications

