

# Product Datasheet

## Lipid A LPS Antibody - BSA Free NB100-64484

Unit Size: 0.5 ml

Store at 4C short term. Aliquot and store at -20C long term. Avoid freeze-thaw cycles.

[www.novusbio.com](http://www.novusbio.com)



[technical@novusbio.com](mailto:technical@novusbio.com)

### Publications: 1

Protocols, Publications, Related Products, Reviews, Research Tools and Images at:  
[www.novusbio.com/NB100-64484](http://www.novusbio.com/NB100-64484)

Updated 2/21/2025 v.20.1

Earn rewards for product  
reviews and publications.

Submit a publication at [www.novusbio.com/publications](http://www.novusbio.com/publications)

Submit a review at [www.novusbio.com/reviews/destination/NB100-64484](http://www.novusbio.com/reviews/destination/NB100-64484)



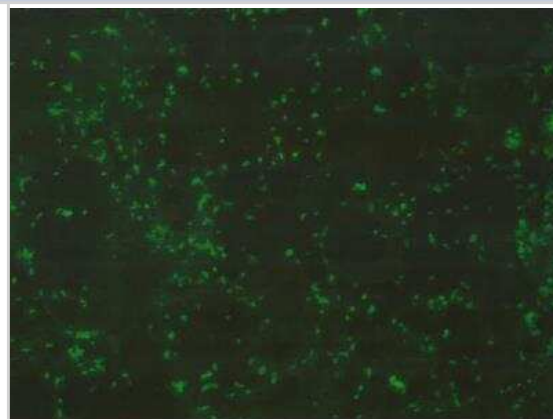
**NB100-64484**

Lipid A LPS Antibody - BSA Free

<b>Product Information</b>	
<b>Unit Size</b>	0.5 ml
<b>Concentration</b>	4 mg/ml
<b>Storage</b>	Store at 4C short term. Aliquot and store at -20C long term. Avoid freeze-thaw cycles.
<b>Clonality</b>	Polyclonal
<b>Preservative</b>	0.1% Sodium Azide
<b>Isotype</b>	IgG
<b>Purity</b>	IgG purified
<b>Buffer</b>	PBS
<b>Product Description</b>	
<b>Host</b>	Goat
<b>Species</b>	Bacteria
<b>Specificity/Sensitivity</b>	NB100-64484 recognizes the Lipid A or endotoxin region of LPS (Lipopolysaccharide) from E. coli. Lipid A is a glucosamine-based phospholipid which forms part of the bacterial outer membrane and anchors LPS to the surface of the bacteria. This antibody cross reacts with P. aeruginosa, K. pneumoniae, S. enteritidis, E. aerogenes, E. hermannii, Y. enterocolitica and S. sonnei.
<b>Immunogen</b>	Whole cell preparation of lipid A from E. coli O157
<b>Product Application Details</b>	
<b>Application Notes</b>	Use in WB reported in scientific literature (PMID:34199851)

## Images

Immunocytochemistry/Immunofluorescence: Lipid A LPS Antibody [NB100-64484] - IF assay using NB100-64484 at a 1:100 dilution to stain *Shigella Sonnei* using above protocol. The magnification is 400X.



Molecular painting. GPI-anchored GFP only (GFP protein), OMVs only (OMV) and a mix of both (OMV + GFP) were incubated and OMV were separated from not associated material by ultracentrifugation. (A) Fluorometric data after molecular painting. Significantly higher fluorescence was observed in the OMV + GFP samples than in control samples containing GFP protein alone (GFP protein) and OMVs alone (OMV). Residual fluorescence is most likely due to residual GFP protein and vesicle autofluorescence. The p-values derived from t-test are indicated. (B) Immunoblotting for GFP and LPS. While a signal for GFP can only be found in the OMV + GFP samples, LPS is detected in all samples containing OMVs. (C) Flow cytometry analysis. Porcine PBMCs were incubated with OMVs to test the immune stimulatory potential of the vesicles. The B-cell proliferation marker Ki67 was used to show activation. The chemical compound R848 serves as an unspecific stimulator. In the absence of OMVs or in the presence of GPI-anchored proteins only, no significant stimulation is observed (no OMV and GPI-AP samples). OMVs show prominent B-cell stimulation, independent of whether molecular painting has been performed (compare samples OMV un and OMV tr). All error bars indicate standard deviations.  $N \geq 2$ . The p-values are derived from t-test analysis. Image collected and cropped by CiteAb from the following open publication (<https://pubmed.ncbi.nlm.nih.gov/34199851>), licensed under a CC-BY license. Not internally tested by Novus Biologicals.



## Publications

Zaruba M, Roschitz L, Sami H et al. Surface Modification of *E. coli* Outer Membrane Vesicles with Glycosylphosphatidylinositol-Anchored Proteins: Generating Pro/Eukaryote Chimera Constructs Membranes 2021-06-04 [PMID: 34199851] (WB)



### **Novus Biologicals USA**

10730 E. Briarwood Avenue  
Centennial, CO 80112  
USA  
Phone: 303.730.1950  
Toll Free: 1.888.506.6887  
Fax: 303.730.1966  
nb-customerservice@bio-techne.com

### **Bio-Techne Canada**

21 Canmotor Ave  
Toronto, ON M8Z 4E6  
Canada  
Phone: 905.827.6400  
Toll Free: 855.668.8722  
Fax: 905.827.6402  
canada.inquires@bio-techne.com

### **Bio-Techne Ltd**

19 Barton Lane  
Abingdon Science Park  
Abingdon, OX14 3NB, United Kingdom  
Phone: (44) (0) 1235 529449  
Free Phone: 0800 37 34 15  
Fax: (44) (0) 1235 533420  
info.EMEA@bio-techne.com

### **General Contact Information**

www.novusbio.com  
Technical Support: nb-technical@bio-techne.com  
Orders: nb-customerservice@bio-techne.com  
General: novus@novusbio.com

### **Limitations**

This product is for research use only and is not approved for use in humans or in clinical diagnosis. Primary Antibodies are guaranteed for 1 year from date of receipt.

For more information on our 100% guarantee, please visit [www.novusbio.com/guarantee](http://www.novusbio.com/guarantee)

Earn gift cards/discounts by submitting a review: [www.novusbio.com/reviews/submit/NB100-64484](http://www.novusbio.com/reviews/submit/NB100-64484)

Earn gift cards/discounts by submitting a publication using this product:  
[www.novusbio.com/publications](http://www.novusbio.com/publications)

