

# Product Datasheet

## Complement C3c Antibody (013E-498.2.3 (10-02A)) - BSA Free NB100-64339

Unit Size: 0.05 mg

Store at 4C short term. Aliquot and store at -20C long term. Avoid freeze-thaw cycles.

[www.novusbio.com](http://www.novusbio.com)



[technical@novusbio.com](mailto:technical@novusbio.com)

Reviews: 1 Publications: 1

Protocols, Publications, Related Products, Reviews, Research Tools and Images at:  
[www.novusbio.com/NB100-64339](http://www.novusbio.com/NB100-64339)

Updated 9/9/2025 v.20.1

Earn rewards for product reviews and publications.

Submit a publication at [www.novusbio.com/publications](http://www.novusbio.com/publications)

Submit a review at [www.novusbio.com/reviews/destination/NB100-64339](http://www.novusbio.com/reviews/destination/NB100-64339)



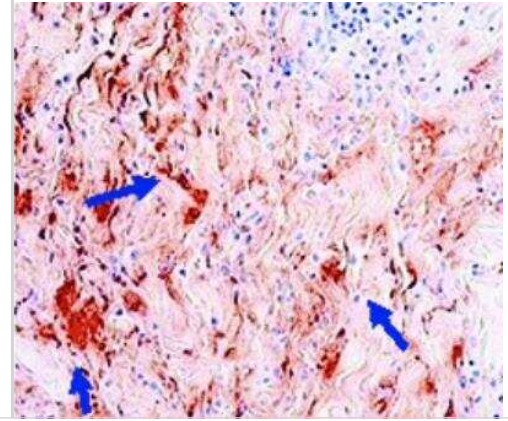
**NB100-64339**

Complement C3c Antibody (013E-498.2.3 (10-02A)) - BSA Free

<b>Product Information</b>	
<b>Unit Size</b>	0.05 mg
<b>Concentration</b>	1.0 mg/ml
<b>Storage</b>	Store at 4C short term. Aliquot and store at -20C long term. Avoid freeze-thaw cycles.
<b>Clonality</b>	Monoclonal
<b>Clone</b>	013E-498.2.3 (10-02A)
<b>Preservative</b>	0.1% Sodium Azide
<b>Isotype</b>	IgG1
<b>Purity</b>	Protein A purified
<b>Buffer</b>	Borate buffered saline (pH 8.4)
<b>Product Description</b>	
<b>Description</b>	Novus Biologicals Mouse Complement C3c Antibody (013E-498.2.3 (10-02A)) - BSA Free (NB100-64339) is a monoclonal antibody validated for use in IHC, WB, ELISA and Flow. Anti-Complement C3c Antibody: Cited in 1 publication. All Novus Biologicals antibodies are covered by our 100% guarantee.
<b>Host</b>	Mouse
<b>Gene ID</b>	718
<b>Gene Symbol</b>	C3
<b>Species</b>	Human
<b>Specificity/Sensitivity</b>	NB100-64339 recognizes 135 kDa complement component 3c (C3c), present in blood serum. C3c is generated over the course of complement activation, where convertase C4b2a (classical pathway) and convertase C3bBb (alternative pathway) cleave C3 to C3b and C3a. C3b is further degraded into iC3b and C3dg/C3d. iC3b is then slowly cleaved (possibly by factor I) to form C3c (beta chain + alpha' chain fragment 1 + alpha' chain fragment 2), C3dg and C3f. C3 is crucial in the induction of tolerance generated when an antigen is introduced into immunoprivileged sites and this is exploited by pathogens and cancer cells to evade the immune system by inhibiting complement activation.
<b>Immunogen</b>	Human C3 from normal serum, highly purified by chromatography
<b>Product Application Details</b>	
<b>Applications</b>	Western Blot, ELISA, Flow Cytometry, Immunohistochemistry, Immunohistochemistry-Frozen
<b>Recommended Dilutions</b>	Western Blot 1:100-1:2000, Flow Cytometry 1:10-1:1000, ELISA 1:100-1:2000, Immunohistochemistry 1:10-1:500, Immunohistochemistry-Frozen 1:10-1:500
<b>Application Notes</b>	In Western Blot binds both C3c and C3 and so is not suitable for all ELISA applications.

## Images

Immunohistochemistry-Frozen: Complement C3c Antibody (10-02A) [NB100-64339] - Human dermis stained with Complement C3c Antibody. IHC-Fr image submitted by a verified customer review.



## Publications

Janssen BJ, Huizinga EG, Raaijmakers HC et al. Structures of complement component C3 provide insights into the function and evolution of immunity. *Nature*. 2005-09-01 [PMID: 16177781]



### **Novus Biologicals USA**

10730 E. Briarwood Avenue  
Centennial, CO 80112  
USA  
Phone: 303.730.1950  
Toll Free: 1.888.506.6887  
Fax: 303.730.1966  
nb-customerservice@bio-techne.com

### **Bio-Techne Canada**

21 Canmotor Ave  
Toronto, ON M8Z 4E6  
Canada  
Phone: 905.827.6400  
Toll Free: 855.668.8722  
Fax: 905.827.6402  
canada.inquires@bio-techne.com

### **Bio-Techne Ltd**

19 Barton Lane  
Abingdon Science Park  
Abingdon, OX14 3NB, United Kingdom  
Phone: (44) (0) 1235 529449  
Free Phone: 0800 37 34 15  
Fax: (44) (0) 1235 533420  
info.EMEA@bio-techne.com

### **General Contact Information**

www.novusbio.com  
Technical Support: nb-technical@bio-techne.com  
Orders: nb-customerservice@bio-techne.com  
General: novus@novusbio.com

### **Products Related to NB100-64339**

---

NBP2-33376H	Blue Marker Antibody (6F4-F6) [HRP]
HAF007	Goat anti-Mouse IgG Secondary Antibody [HRP]
NB7539	Goat anti-Mouse IgG (H+L) Secondary Antibody [HRP]
NBP1-97005-0.5mg	Mouse IgG1 Isotype Control (MG1)

---

### **Limitations**

This product is for research use only and is not approved for use in humans or in clinical diagnosis. Primary Antibodies are guaranteed for 1 year from date of receipt.

For more information on our 100% guarantee, please visit [www.novusbio.com/guarantee](http://www.novusbio.com/guarantee)

Earn gift cards/discounts by submitting a review: [www.novusbio.com/reviews/submit/NB100-64339](http://www.novusbio.com/reviews/submit/NB100-64339)

Earn gift cards/discounts by submitting a publication using this product:  
[www.novusbio.com/publications](http://www.novusbio.com/publications)

