

Product Datasheet

MCM2 [p Ser108] Antibody - BSA Free NB100-639

Unit Size: 100 ul

Store at 4C. Do not freeze.

www.novusbio.com



technical@novusbio.com

Publications: 6

Protocols, Publications, Related Products, Reviews, Research Tools and Images at:
www.novusbio.com/NB100-639

Updated 9/9/2025 v.20.1

Earn rewards for product
reviews and publications.

Submit a publication at www.novusbio.com/publications

Submit a review at www.novusbio.com/reviews/destination/NB100-639



NB100-639

MCM2 [p Ser108] Antibody - BSA Free

Product Information	
Unit Size	100 ul
Concentration	1.0 mg/ml
Storage	Store at 4C. Do not freeze.
Clonality	Polyclonal
Preservative	0.09% Sodium Azide
Isotype	IgG
Purity	Immunogen affinity purified
Buffer	Tris-Citrate/Phosphate (pH 7.0 - 8.0)

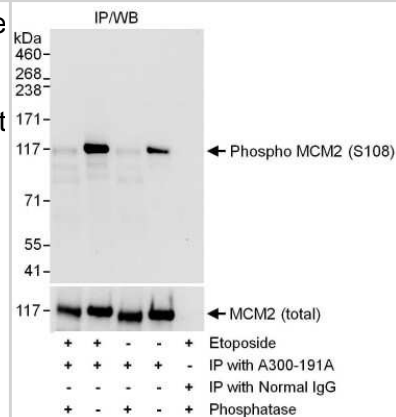
Product Description	
Description	Novus Biologicals Rabbit MCM2 [p Ser108] Antibody - BSA Free (NB100-639) is a polyclonal antibody validated for use in IHC and WB. Anti-MCM2 Antibody: Cited in 6 publications. All Novus Biologicals antibodies are covered by our 100% guarantee.
Host	Rabbit
Gene ID	4171
Gene Symbol	MCM2
Species	Human, Mouse
Immunogen	Immunogen was a synthetic phosphorylated peptide, which represented a portion of human Minichromosomal Maintenance Deficient 2 surrounding Serine 108 according to the numbering given in entry NP_0045117.2 (GeneID 4171).

Product Application Details	
Applications	Western Blot, Immunohistochemistry-Paraffin, Immunohistochemistry
Recommended Dilutions	Western Blot 1:5000-1:10000, Immunohistochemistry 1:1000- 1:5000, Immunohistochemistry-Paraffin 1:1000- 1:5000
Application Notes	Epitope retrieval with citrate buffer pH6.0 is recommended for FFPE tissue sections.

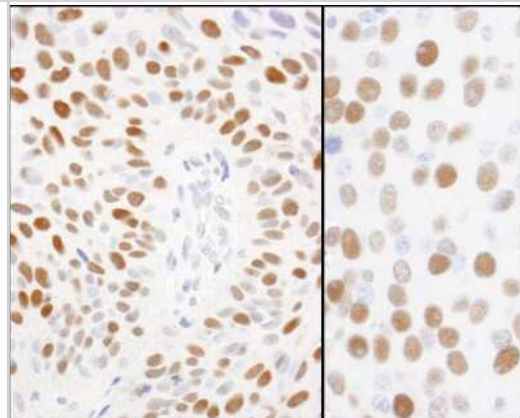


Images

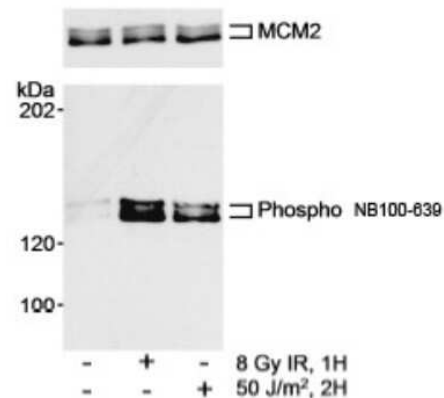
Western Blot: MCM2 [p Ser108] Antibody [NB100-639] - Samples: Whole cell lysate (1 mg for IP; 20% of IP loaded) from 293T cells either mock treated (-) or treated (+) with EPE (100 μ M, 2h). Antibodies: MCM2 was immunoprecipitated using rabbit anti-MCM2 antibody was used for WB at 1 mcg/ml. To examine total MCM2, the blot was stripped and then blotted with rabbit anti-MCM2 antibody . Detection: Chemiluminescence with exposure times of 10 seconds (upper and lower panels).



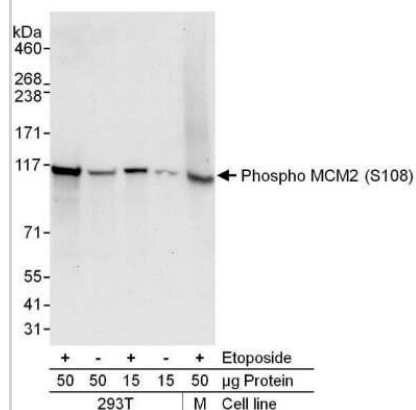
Immunohistochemistry-Paraffin: MCM2 [p Ser108] Antibody [NB100-639] - Human breast carcinoma (left) and mouse renal cell carcinoma (right). Antibody: Affinity purified rabbit anti-phospho MCM2 (S108) used at a dilution of 1:5,000 (0.2 μ g/ml). Detection: DAB



Western Blot: MCM2 [p Ser108] Antibody [NB100-639] - Detection of Human phospho MCM2 (Ser108) by Western Blot. Samples: Whole cell lysate from HeLa cells that were untreated or exposed to 8 Gy IR for 1 h or 50 J/m² for 2 hours. Antibody: Affinity purified rabbit anti-phospho MCM2 (Ser108) antibody (Cat. No. NB100-639) used at 0.2 mcg/ml. Subsequently, total MCM2 was detected to verify loading. Detection: Chemiluminescence with an exposure time of 5 seconds.



Western Blot: MCM2 [p Ser108] Antibody [NB100-639] - Whole cell lysate (15 or 50 μ g) from 293T cells or mouse NIH3T3 (M) cells. Cells were either mock treated (-) or treated (+) with EPE (100 μ M, 2h). Antibody used at 0.1 mcg/ml.



Publications

Izawa N, Wu W, Sato K et al. HERC2 Interacts with Claspin and regulates DNA origin firing and replication fork progression. *Cancer Res* 2011-09-01 [PMID: 21775519]

Kemp MG, Akan Z, Yilmaz S et al. Tipin-replication protein A interaction mediates Chk1 phosphorylation by ATR in response to genotoxic stress. *J Biol Chem* 2010-05-01 [PMID: 20233725]

Krasinska L, Fisher D. Replication initiation complex formation in the absence of nuclear function in *Xenopus*. *Nucleic Acids Res* 2009-04-01 [PMID: 19237397]

Trenz K, Errico A, Costanzo V et al. Plx1 is required for chromosomal DNA replication under stressful conditions. *EMBO J* 2008-03-01 [PMID: 18309293]

Liu E, Lee AY, Chiba T et al. The ATR-mediated S phase checkpoint prevents rereplication in mammalian cells when licensing control is disrupted. *J Cell Biol* 2007-11-01 [PMID: 18025301]

Cortez D, Glick G, Elledge SJ et al. Minichromosome maintenance proteins are direct targets of the ATM and ATR checkpoint kinases. *Proc Natl Acad Sci U S A* 2004-07-01 [PMID: 15210935]





Novus Biologicals USA

10730 E. Briarwood Avenue
Centennial, CO 80112
USA
Phone: 303.730.1950
Toll Free: 1.888.506.6887
Fax: 303.730.1966
nb-customerservice@bio-techne.com

Bio-Techne Canada

21 Canmotor Ave
Toronto, ON M8Z 4E6
Canada
Phone: 905.827.6400
Toll Free: 855.668.8722
Fax: 905.827.6402
canada.inquires@bio-techne.com

Bio-Techne Ltd

19 Barton Lane
Abingdon Science Park
Abingdon, OX14 3NB, United Kingdom
Phone: (44) (0) 1235 529449
Free Phone: 0800 37 34 15
Fax: (44) (0) 1235 533420
info.EMEA@bio-techne.com

General Contact Information

www.novusbio.com
Technical Support: nb-technical@bio-techne.com
Orders: nb-customerservice@bio-techne.com
General: novus@novusbio.com

Products Related to NB100-639

NBL1-12950	MCM2 Overexpression Lysate
NBP2-33376H	Blue Marker Antibody (6F4-F6) [HRP]
HAF008	Goat anti-Rabbit IgG Secondary Antibody [HRP]
NB7160	Goat anti-Rabbit IgG (H+L) Secondary Antibody [HRP]
NBP2-24891	Rabbit IgG Isotype Control

Limitations

This product is for research use only and is not approved for use in humans or in clinical diagnosis. Primary Antibodies are guaranteed for 1 year from date of receipt.

For more information on our 100% guarantee, please visit www.novusbio.com/guarantee

Earn gift cards/discounts by submitting a review: www.novusbio.com/reviews/submit/NB100-639

Earn gift cards/discounts by submitting a publication using this product:

www.novusbio.com/publications

