

# Product Datasheet

## Cdc20 Antibody NB100-59828

Unit Size: 0.1 ml

Store at 4C. Do not freeze.

[www.novusbio.com](http://www.novusbio.com)



[technical@novusbio.com](mailto:technical@novusbio.com)

### Publications: 7

Protocols, Publications, Related Products, Reviews, Research Tools and Images at:  
[www.novusbio.com/NB100-59828](http://www.novusbio.com/NB100-59828)

Updated 9/9/2025 v.20.1

Earn rewards for product  
reviews and publications.

Submit a publication at [www.novusbio.com/publications](http://www.novusbio.com/publications)

Submit a review at [www.novusbio.com/reviews/destination/NB100-59828](http://www.novusbio.com/reviews/destination/NB100-59828)



**NB100-59828**

## Cdc20 Antibody

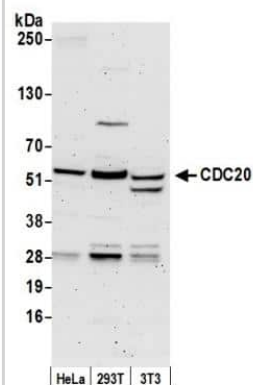
Product Information	
Unit Size	0.1 ml
Concentration	0.2 mg/ml
Storage	Store at 4C. Do not freeze.
Clonality	Polyclonal
Preservative	0.09% Sodium Azide
Isotype	IgG
Purity	Immunogen affinity purified
Buffer	TBS and 0.1% BSA

Product Description	
Description	Novus Biologicals Rabbit Cdc20 Antibody (NB100-59828) is a polyclonal antibody validated for use in IHC, WB and IP. Anti-Cdc20 Antibody: Cited in 7 publications. All Novus Biologicals antibodies are covered by our 100% guarantee.
Host	Rabbit
Gene ID	991
Gene Symbol	CDC20
Species	Human, Mouse
Immunogen	The immunogen recognized by this antibody maps to a region between residue 449 and 499 of human cell division cycle 20 using the numbering given in entry NP_001246.2 (GeneID 991).

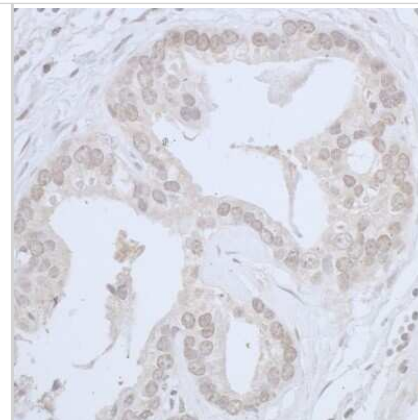
Product Application Details	
Applications	Western Blot, Immunohistochemistry-Paraffin, Immunohistochemistry, Immunoprecipitation
Recommended Dilutions	Western Blot 1:2000-1:10000, Immunohistochemistry 1:500- 1:2000, Immunoprecipitation 2-10 ug/mg lysate, Immunohistochemistry-Paraffin 1:500-1:2000
Application Notes	Epitope retrieval with citrate buffer pH6.0 is recommended for FFPE tissue sections.

**Images**

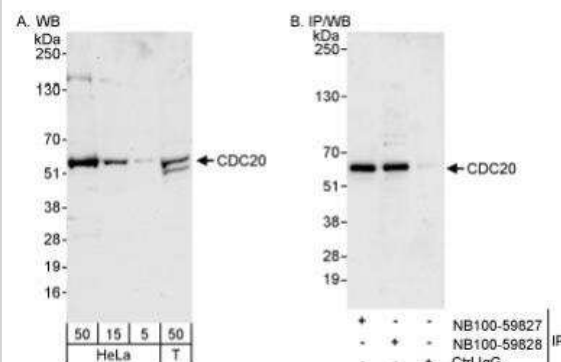
Western Blot: Cdc20 Antibody [NB100-59828] - Detection of Human and Mouse CDC20 by Western Blot. Samples: Whole cell lysate (50 ug) from HeLa, 293T, and mouse NIH3T3 cells prepared using NETN lysis buffer. Antibody: Affinity purified rabbit anti-CDC20 antibody NB100-59828 used for WB at 0.1 ug/ml. Detection: Chemiluminescence with an exposure time of 3 minutes.



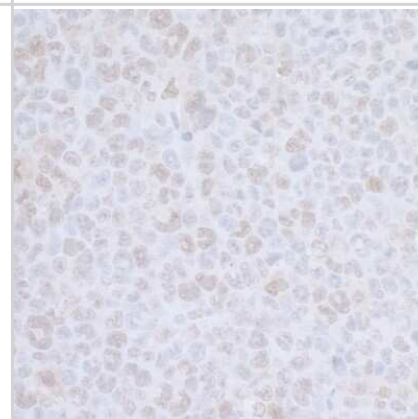
Immunohistochemistry-Paraffin: Cdc20 Antibody [NB100-59828] - Section of human prostate carcinoma. Antibody: Affinity purified rabbit anti-CDC20 used at a dilution of 1:1,000 (0.2ug/ml). Detection: DAB



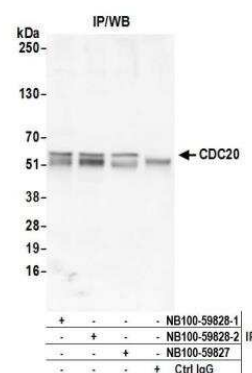
Western Blot: Cdc20 Antibody [NB100-59828] - Detection of Human CDC20 on HeLa whole cell lysate using NB100-59828. CDC20 was also immunoprecipitated by rabbit anti-CDC20 antibody NB100-59827.



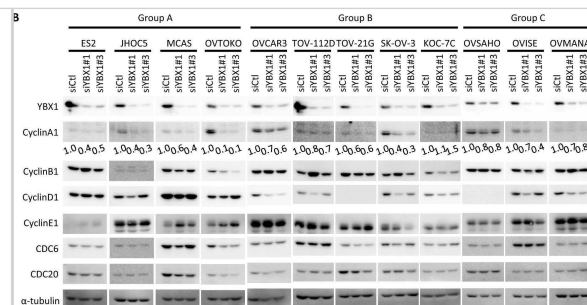
Immunohistochemistry-Paraffin: Cdc20 Antibody [NB100-59828] - Section of mouse plasmacytoma. Antibody: Affinity purified rabbit anti-CDC20 used at a dilution of 1:1,000 (0.2ug/ml). Detection: DAB.



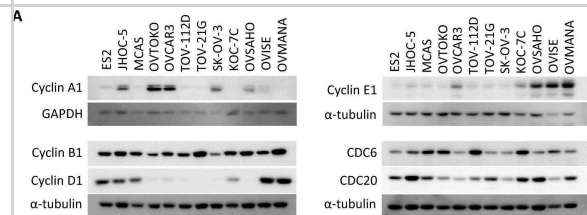
Immunoprecipitation: Cdc20 Antibody [NB100-59828] - Detection of human CDC20 by western blot of immunoprecipitates. Samples: Whole cell lysate (0.5 or 1.0 mg per IP reaction; 20% of IP loaded) from HeLa cells prepared using NETN lysis buffer. Antibodies: Affinity purified rabbit anti-CDC20 antibody NB100-59828 (lot NB100-59828-2) used for IP at 6 ug per reaction. CDC20 was also immunoprecipitated by a previous lot of this antibody (lot NB100-59828-1) and rabbit anti-CDC20 antibody NB100-59827. For blotting immunoprecipitated CDC20, NB100-59828 was used at 1 ug/ml. Detection: Chemiluminescence with an exposure time of 3 minutes.



Effects of YBX1 knockdown by siRNA#1 and siRNA#3 on protein expression of cell cycle-related genes. (A) Expression of cell cycle-related genes as assessed by western blot analysis. (B) Effects of YBX1 siRNAs (siRNA#1 and siRNA#3) on the expression of cell cycle-related genes in cell lines following transfection with YBX1 siRNAs for 3 days.  $\alpha$ -tubulin was used as a loading control. Image collected and cropped by CiteAb from the following open publication (<https://pubmed.ncbi.nlm.nih.gov/39289424>), licensed under a CC-BY license. Not internally tested by Novus Biologicals.



Effects of YBX1 knockdown by siRNA#1 and siRNA#3 on protein expression of cell cycle-related genes. (A) Expression of cell cycle-related genes as assessed by western blot analysis. (B) Effects of YBX1 siRNAs (siRNA#1 and siRNA#3) on the expression of cell cycle-related genes in cell lines following transfection with YBX1 siRNAs for 3 days.  $\alpha$ -tubulin was used as a loading control. Image collected and cropped by CiteAb from the following open publication (<https://pubmed.ncbi.nlm.nih.gov/39289424>), licensed under a CC-BY license. Not internally tested by Novus Biologicals.



## Publications

Minamino M, Tei S, Negishi L, Kanemaki MT et Al. Temporal Regulation of ESCO2 Degradation by the MCM Complex, the CUL4-DDB1-VPRBP Complex, and the Anaphase-Promoting Complex *Curr Biol* 2018-08-14 [PMID: 30100344]

Murakami, Y;Katsuchi, D;Matsumoto, T;Kanazawa, K;Shibata, T;Kawahara, A;Akiba, J;Yanaihara, N;Okamoto, A;Itamochi, H;Sugiyama, T;Terada, A;Nishio, S;Tsuda, N;Kato, K;Ono, M;Kuwano, M; Y-box binding protein 1/cyclin A1 axis specifically promotes cell cycle progression at G2/M phase in ovarian cancer *Scientific reports* 2024-09-17 [PMID: 39289424]

Douglas, P, Ye, R Et al. Nocodazole-Induced Expression and Phosphorylation of Anillin and Other Mitotic Proteins Are Decreased in DNA-Dependent Protein Kinase Catalytic Subunit-Deficient Cells and Rescued by Inhibition of the Anaphase-Promoting Complex/Cyclosome with proTAME but. *Mol Cell Biol* 2020-06-15 [PMID: 32284347] (WB, Mouse)

Zhang X, Chen W, Yin N et al. Regulation of OLC1 protein expression by the anaphase-promoting complex *Oncol Lett* 2019-01-02 [PMID: 30854039] (WB, Human)

Wang R, Li KM, Zhou CH et al. Cdc20 mediates D-box-dependent degradation of Sp100. *Biochem Biophys Res Commun* 2011-12-01 [PMID: 22086178]

Di Fiore B, Pines J. How cyclin A destruction escapes the spindle assembly checkpoint. *J Cell Biol* 2010-08-01 [PMID: 20733051]

Badtke MM, Jambal P, Dye WW et al. Unliganded progesterone receptors attenuate taxane-induced breast cancer cell death by modulating the spindle assembly checkpoint *Breast Cancer Res Treat* 2012-01-01 [PMID: 21340479] (WB, Human)



### **Novus Biologicals USA**

10730 E. Briarwood Avenue  
Centennial, CO 80112  
USA  
Phone: 303.730.1950  
Toll Free: 1.888.506.6887  
Fax: 303.730.1966  
nb-customerservice@bio-techne.com

### **Bio-Techne Canada**

21 Canmotor Ave  
Toronto, ON M8Z 4E6  
Canada  
Phone: 905.827.6400  
Toll Free: 855.668.8722  
Fax: 905.827.6402  
canada.inquires@bio-techne.com

### **Bio-Techne Ltd**

19 Barton Lane  
Abingdon Science Park  
Abingdon, OX14 3NB, United Kingdom  
Phone: (44) (0) 1235 529449  
Free Phone: 0800 37 34 15  
Fax: (44) (0) 1235 533420  
info.EMEA@bio-techne.com

### **General Contact Information**

www.novusbio.com  
Technical Support: nb-technical@bio-techne.com  
Orders: nb-customerservice@bio-techne.com  
General: novus@novusbio.com

### **Products Related to NB100-59828**

---

NBL1-08992	Cdc20 Overexpression Lysate
NBP2-33376H	Blue Marker Antibody (6F4-F6) [HRP]
HAF008	Goat anti-Rabbit IgG Secondary Antibody [HRP]
NB7160	Goat anti-Rabbit IgG (H+L) Secondary Antibody [HRP]
NBP2-24891	Rabbit IgG Isotype Control

---

### **Limitations**

This product is for research use only and is not approved for use in humans or in clinical diagnosis. Primary Antibodies are guaranteed for 1 year from date of receipt.

For more information on our 100% guarantee, please visit [www.novusbio.com/guarantee](http://www.novusbio.com/guarantee)

Earn gift cards/discounts by submitting a review: [www.novusbio.com/reviews/submit/NB100-59828](http://www.novusbio.com/reviews/submit/NB100-59828)

Earn gift cards/discounts by submitting a publication using this product:  
[www.novusbio.com/publications](http://www.novusbio.com/publications)

