

Product Datasheet

SUB1 Antibody NB100-59775

Unit Size: 0.1 ml

Store at 4C. Do not freeze.

www.novusbio.com



technical@novusbio.com

Publications: 2

Protocols, Publications, Related Products, Reviews, Research Tools and Images at:
www.novusbio.com/NB100-59775

Updated 9/9/2025 v.20.1

Earn rewards for product
reviews and publications.

Submit a publication at www.novusbio.com/publications

Submit a review at www.novusbio.com/reviews/destination/NB100-59775



NB100-59775

SUB1 Antibody

Product Information	
Unit Size	0.1 ml
Concentration	0.2 mg/ml
Storage	Store at 4C. Do not freeze.
Clonality	Polyclonal
Preservative	0.09% Sodium Azide
Isotype	IgG
Purity	Immunogen affinity purified
Buffer	TBS and 0.1% BSA

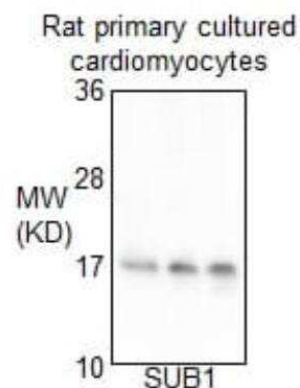
Product Description	
Description	Novus Biologicals Rabbit SUB1 Antibody (NB100-59775) is a polyclonal antibody validated for use in IHC, WB and IP. Anti-SUB1 Antibody: Cited in 2 publications. All Novus Biologicals antibodies are covered by our 100% guarantee.
Host	Rabbit
Gene ID	10923
Gene Symbol	SUB1
Species	Human, Mouse, Rat
Reactivity Notes	Orangutan (100%). Rat reactivity reported from a verified customer review.
Immunogen	The immunogen recognized by this antibody maps to a region between residue 77 and 127 of human positive cofactor 4 using the numbering given in entry NP_006704.2 (GeneID 10923).

Product Application Details	
Applications	Western Blot, Immunohistochemistry-Paraffin, Immunohistochemistry, Immunoprecipitation
Recommended Dilutions	Western Blot 1:2000-1:10000, Immunohistochemistry 1:500 - 1:2000, Immunoprecipitation, Immunohistochemistry-Paraffin 1:100-1:500
Application Notes	Epitope retrieval with citrate buffer pH6.0 is recommended for FFPE tissue sections.

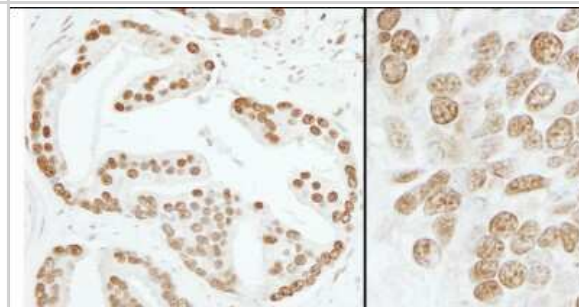


Images

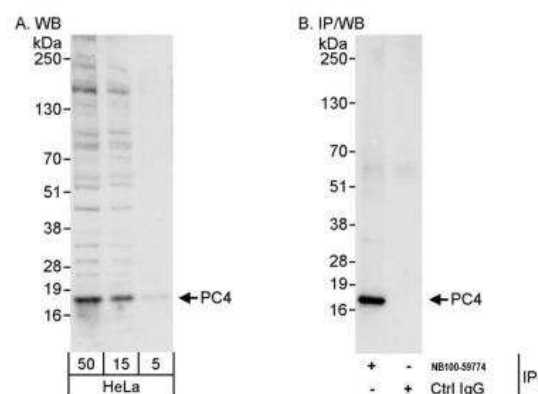
Western Blot: SUB1 Antibody [NB100-59775] - Analysis using rat cardiomyocyte lysate with anti-SUB1 antibody. Image from verified customer review.



Immunohistochemistry-Paraffin: SUB1 Antibody [NB100-59775] - Sample: FFPE section of human prostate carcinoma (left) and mouse teratoma (right). Antibody: Affinity purified rabbit anti- PC4 used at a dilution of 1:200 (1ug/ml) and 1:1,000 (0.2ug/ml). Detection: DAB



Immunoprecipitation: SUB1 Antibody [NB100-59775] - Detection of human SUB1/PC4 by western blot and immunoprecipitation. Samples: Whole cell lysate (5, 15 and 50 ug for WB; 1 mg for IP, 20% of IP loaded) from HeLa cells. Antibodies: Affinity purified rabbit anti-SUB1 antibody NB100-59775 used for WB at 0.04 ug/ml (A) and 0.1 ug/ml (B). SUB1 was immunoprecipitated by rabbit anti-SUB1 antibody NB100-59774, which recognizes an upstream epitope. Detection: Chemiluminescence with exposure times of 10 seconds (A and B).



Publications

Huang R, Hu Z, Chen X Et al. The Transcription Factor SUB1 Is a Master Regulator of the Macrophage TLR Response in Atherosclerosis *Advanced science* (Weinheim, Baden-Wurttemberg, Germany) 2021-08-10 [PMID: 34378353] (Western Blot, Human)

Lin SJ, Chang KP, Hsu CW et al. Low-molecular-mass secretome profiling identifies C-C motif chemokine 5 as a potential plasma biomarker and therapeutic target for nasopharyngeal carcinoma. *J Proteomics* 2013-09-27 [PMID: 24080422] (WB, Human)



Novus Biologicals USA

10730 E. Briarwood Avenue
Centennial, CO 80112
USA
Phone: 303.730.1950
Toll Free: 1.888.506.6887
Fax: 303.730.1966
nb-customerservice@bio-techne.com

Bio-Techne Canada

21 Canmotor Ave
Toronto, ON M8Z 4E6
Canada
Phone: 905.827.6400
Toll Free: 855.668.8722
Fax: 905.827.6402
canada.inquires@bio-techne.com

Bio-Techne Ltd

19 Barton Lane
Abingdon Science Park
Abingdon, OX14 3NB, United Kingdom
Phone: (44) (0) 1235 529449
Free Phone: 0800 37 34 15
Fax: (44) (0) 1235 533420
info.EMEA@bio-techne.com

General Contact Information

www.novusbio.com
Technical Support: nb-technical@bio-techne.com
Orders: nb-customerservice@bio-techne.com
General: novus@novusbio.com

Products Related to NB100-59775

NBL1-16593	SUB1 Overexpression Lysate
NBP2-33376H	Blue Marker Antibody (6F4-F6) [HRP]
HAF008	Goat anti-Rabbit IgG Secondary Antibody [HRP]
NB7160	Goat anti-Rabbit IgG (H+L) Secondary Antibody [HRP]
NBP2-24891	Rabbit IgG Isotype Control

Limitations

This product is for research use only and is not approved for use in humans or in clinical diagnosis. Primary Antibodies are guaranteed for 1 year from date of receipt.

For more information on our 100% guarantee, please visit www.novusbio.com/guarantee

Earn gift cards/discounts by submitting a review: www.novusbio.com/reviews/submit/NB100-59775

Earn gift cards/discounts by submitting a publication using this product:
www.novusbio.com/publications

