

Product Datasheet

PA28 Activator alpha Subunit/PSME1 Antibody NB100-59751

Unit Size: 0.1 mg

Store at -20C. Avoid freeze-thaw cycles.

www.novusbio.com



technical@novusbio.com

Publications: 1

Protocols, Publications, Related Products, Reviews, Research Tools and Images at:
www.novusbio.com/NB100-59751

Updated 9/9/2025 v.20.1

Earn rewards for product
reviews and publications.

Submit a publication at www.novusbio.com/publications

Submit a review at www.novusbio.com/reviews/destination/NB100-59751



NB100-59751**PA28 Activator alpha Subunit/PSME1 Antibody**

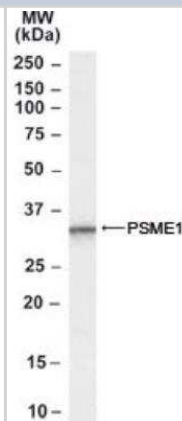
Product Information	
Unit Size	0.1 mg
Concentration	0.5 mg/ml
Storage	Store at -20C. Avoid freeze-thaw cycles.
Clonality	Polyclonal
Preservative	0.02% Sodium Azide
Isotype	IgG
Purity	Immunogen affinity purified
Buffer	Tris saline (20 mM Tris pH 7.3, 150 mM NaCl), 0.5% BSA
Target Molecular Weight	29 kDa

Product Description	
Description	Novus Biologicals Goat PA28 Activator alpha Subunit/PSME1 Antibody (NB100-59751) is a polyclonal antibody validated for use in WB and ELISA. Anti-PA28 Activator alpha Subunit/PSME1 Antibody: Cited in 1 publication. All Novus Biologicals antibodies are covered by our 100% guarantee.
Host	Goat
Gene ID	5720
Gene Symbol	PSME1
Species	Human
Specificity/Sensitivity	This antibody is expected to recognise isoform 1 (NP_006254.1).
Immunogen	Peptide with sequence C-KNFEKLLKPRGETK corresponding to C-Terminus according to NP_006254.1.

Product Application Details	
Applications	Western Blot, Peptide ELISA
Recommended Dilutions	Western Blot 0.3 - 1 ug/ml, Peptide ELISA Detection limit 1:64000
Application Notes	WB: Approx. 30 kDa band observed in human lymph node, spleen, tonsil and peripheral blood mononucleocyte lysates (calculated MW of 28.7 kDa band according to NP_006254.1).

Images

Western Blot: PA28 Activator alpha Subunit/PSME1 Antibody [NB100-59751] - Analysis of PSME1 (isoform 1) using this antibody at 0.3 ug/ml in Human Peripheral Blood Mononucleocyte lysate (35ug protein in RIPA buffer).



Publications

Brychcy M, Kuckelkorn U, Hausdorf G et al. Anti-20S proteasome autoantibodies inhibit proteasome stimulation by proteasome activator PA28. *Arthritis Rheum* 2006-07-01 [PMID: 16802355]





Novus Biologicals USA

10730 E. Briarwood Avenue
Centennial, CO 80112
USA
Phone: 303.730.1950
Toll Free: 1.888.506.6887
Fax: 303.730.1966
nb-customerservice@bio-techne.com

Bio-Techne Canada

21 Canmotor Ave
Toronto, ON M8Z 4E6
Canada
Phone: 905.827.6400
Toll Free: 855.668.8722
Fax: 905.827.6402
canada.inquires@bio-techne.com

Bio-Techne Ltd

19 Barton Lane
Abingdon Science Park
Abingdon, OX14 3NB, United Kingdom
Phone: (44) (0) 1235 529449
Free Phone: 0800 37 34 15
Fax: (44) (0) 1235 533420
info.EMEA@bio-techne.com

General Contact Information

www.novusbio.com
Technical Support: nb-technical@bio-techne.com
Orders: nb-customerservice@bio-techne.com
General: novus@novusbio.com

Products Related to NB100-59751

NBL1-14907	PA28 Activator alpha Subunit/PSME1 Overexpression Lysate
NBP2-33376H	Blue Marker Antibody (6F4-F6) [HRP]
HAF017	Rabbit anti-Goat IgG Secondary Antibody [HRP (Horseradish Peroxidase)]
HAF109	Donkey anti-Goat IgG Secondary Antibody [HRP (Horseradish Peroxidase)]
NB410-28088-1mg	Goat IgG Isotype Control

Limitations

This product is for research use only and is not approved for use in humans or in clinical diagnosis. Primary Antibodies are guaranteed for 1 year from date of receipt.

For more information on our 100% guarantee, please visit www.novusbio.com/guarantee

Earn gift cards/discounts by submitting a review: www.novusbio.com/reviews/submit/NB100-59751

Earn gift cards/discounts by submitting a publication using this product:
www.novusbio.com/publications



