

# Product Datasheet

## Lamin A + C Antibody - BSA Free NB100-56649

Unit Size: 0.2 ml

Store at 4C short term. Aliquot and store at -20C long term. Avoid freeze-thaw cycles.

[www.novusbio.com](http://www.novusbio.com)



[technical@novusbio.com](mailto:technical@novusbio.com)

### Publications: 6

Protocols, Publications, Related Products, Reviews, Research Tools and Images at:  
[www.novusbio.com/NB100-56649](http://www.novusbio.com/NB100-56649)

Updated 9/9/2025 v.20.1

Earn rewards for product  
reviews and publications.

Submit a publication at [www.novusbio.com/publications](http://www.novusbio.com/publications)

Submit a review at [www.novusbio.com/reviews/destination/NB100-56649](http://www.novusbio.com/reviews/destination/NB100-56649)



**NB100-56649**

Lamin A + C Antibody - BSA Free

Product Information	
<b>Unit Size</b>	0.2 ml
<b>Concentration</b>	This product is unpurified. The exact concentration of antibody is not quantifiable.
<b>Storage</b>	Store at 4C short term. Aliquot and store at -20C long term. Avoid freeze-thaw cycles.
<b>Clonality</b>	Polyclonal
<b>Preservative</b>	0.05% Sodium Azide
<b>Isotype</b>	IgG
<b>Purity</b>	Unpurified
<b>Buffer</b>	Whole antisera with PBS and 50% Glycerol

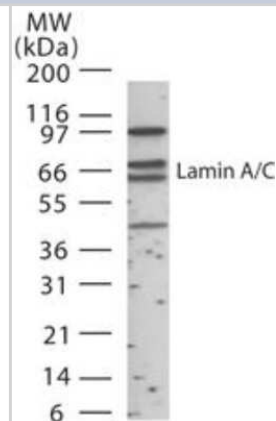
Product Description	
<b>Description</b>	Novus Biologicals Rabbit Lamin A + C Antibody - BSA Free (NB100-56649) is a polyclonal antibody validated for use in WB, Flow and ICC/IF. Anti-Lamin A + C Antibody: Cited in 6 publications. All Novus Biologicals antibodies are covered by our 100% guarantee.
<b>Host</b>	Rabbit
<b>Gene ID</b>	4000
<b>Gene Symbol</b>	LMNA
<b>Species</b>	Human
<b>Marker</b>	Nuclear Envelope Marker
<b>Specificity/Sensitivity</b>	Because of immunogen's 100% homology with Isoforms 1, 4, 5, 6, ADelta10 and C of Prelamin-A/C, this antibody is expected to detect multiple bands in WB.
<b>Immunogen</b>	A synthetic peptide corresponding to amino acids 249-265 CRAQHEDQVEQYKKELEK of Human Lamin A/C was used immunogen.

Product Application Details	
<b>Applications</b>	Western Blot, Flow (Intracellular), Immunocytochemistry/ Immunofluorescence
<b>Recommended Dilutions</b>	Western Blot 1:500 - 1:1000, Immunocytochemistry/ Immunofluorescence 1:100, Flow (Intracellular) 1:500 - 1:1000

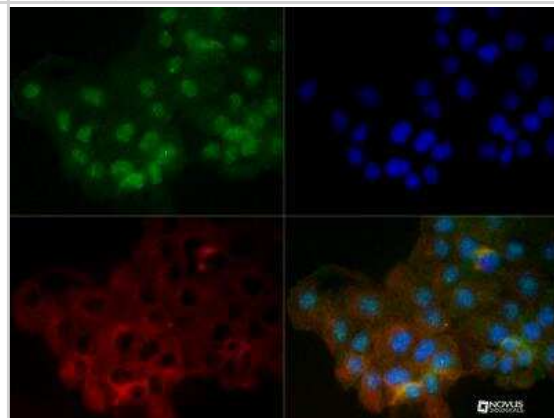


## Images

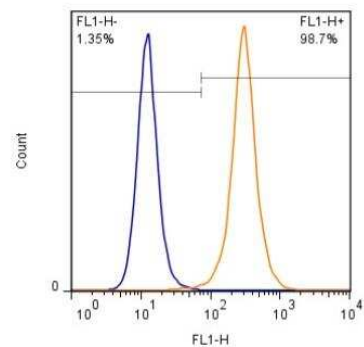
Western Blot: Lamin A + C Antibody [NB100-56649] - Analysis of human Lamin A + C in 15 ug of HeLa cell lysate using NB100-56649 at 1:1000.



Immunocytochemistry/Immunofluorescence: Lamin A + C Antibody [NB100-56649] - Lamin A/C antibody was tested in A431 cells at 1:100 against DyLight 488 (Green). Alpha tubulin and nuclei were counterstained against DyLight 568 (Red) and DAPI (Blue).



Flow (Intracellular): Lamin A + C Antibody [NB100-56649] - Intracellular staining of HeLa cells ( $1 \times 10^6$  cells/mL) with Lamin A+C antibody (orange) stained at 1:1000. Detected with a GtxRb DyLight 488 secondary. Shown with the secondary only control (blue).



**Publications**

Wulff-Fuentes E, Boakye J, Kroenke K et al. O-GlcNAcylation regulates OTX2's proteostasis. *iScience* 2023-10-01 [PMID: 38026167]

Hinte F, van Anken E, Tirosh B, Brune W Proteasomal inhibition triggers viral oncoprotein degradation via autophagy-lysosomal pathway *PLoS Pathog.* 2020-02-01 [PMID: 32092124] (WB, Human)

Kiel T, Busch A, Meyer-Rachner A, Hubner S. Laminopathy-inducing mutations reduce nuclear import of expressed prelamin A. *Int. J. Biochem. Cell Biol.* 2014-06-03 [PMID: 24943589] (WB, Human)

**Details:**

Fig 2D: HeLa cells transfected with various lamin A constructs (Lamin-HeLa). The lamin A/C pAb antibody recognized both endogenous and recombinant lamin A, and detected both pre-lamin A and mature lamin A. The specificity of the Lamin A/C pAb was validated in Lamin-HeLa by WB (Fig 2D).

Nakamura M, Yamada M, Ohsawa T et al. Phosphoproteomic profiling of human SH-SY5Y neuroblastoma cells during response to 6-hydroxydopamine-induced oxidative stress. *Biochim Biophys Acta.* 2006-09-01 [PMID: 16949164]

Lei JX, Liu QY, Sodja C et al. S/MAR-binding properties of Sox2 and its involvement in apoptosis of human NT2 neural precursors. *Cell Death Differ.* 2005-11-01 [PMID: 15920534]

Siripurapu V, Meth J, Kobayashi N, Hamaguchi M. DBC2 significantly influences cell-cycle, apoptosis, cytoskeleton and membrane-trafficking pathways. *J Mol Biol.* 2005-02-11 [PMID: 15663929]





### **Novus Biologicals USA**

10730 E. Briarwood Avenue  
Centennial, CO 80112  
USA  
Phone: 303.730.1950  
Toll Free: 1.888.506.6887  
Fax: 303.730.1966  
nb-customerservice@bio-techne.com

### **Bio-Techne Canada**

21 Canmotor Ave  
Toronto, ON M8Z 4E6  
Canada  
Phone: 905.827.6400  
Toll Free: 855.668.8722  
Fax: 905.827.6402  
canada.inquires@bio-techne.com

### **Bio-Techne Ltd**

19 Barton Lane  
Abingdon Science Park  
Abingdon, OX14 3NB, United Kingdom  
Phone: (44) (0) 1235 529449  
Free Phone: 0800 37 34 15  
Fax: (44) (0) 1235 533420  
info.EMEA@bio-techne.com

### **General Contact Information**

www.novusbio.com  
Technical Support: nb-technical@bio-techne.com  
Orders: nb-customerservice@bio-techne.com  
General: novus@novusbio.com

### **Products Related to NB100-56649**

---

NB800-PC1	HeLa Whole Cell Lysate
NBP2-33376H	Blue Marker Antibody (6F4-F6) [HRP]
HAF008	Goat anti-Rabbit IgG Secondary Antibody [HRP]
NB7160	Goat anti-Rabbit IgG (H+L) Secondary Antibody [HRP]
NBP2-24891	Rabbit IgG Isotype Control

---

### **Limitations**

This product is for research use only and is not approved for use in humans or in clinical diagnosis. Primary Antibodies are guaranteed for 1 year from date of receipt.

For more information on our 100% guarantee, please visit [www.novusbio.com/guarantee](http://www.novusbio.com/guarantee)

Earn gift cards/discounts by submitting a review: [www.novusbio.com/reviews/submit/NB100-56649](http://www.novusbio.com/reviews/submit/NB100-56649)

Earn gift cards/discounts by submitting a publication using this product:  
[www.novusbio.com/publications](http://www.novusbio.com/publications)

