

# Product Datasheet

## APEX2 Antibody - BSA Free

### NB100-56625

Unit Size: 0.2 ml

Store at 4C short term. Aliquot and store at -20C long term. Avoid freeze-thaw cycles.

[www.novusbio.com](http://www.novusbio.com)



[technical@novusbio.com](mailto:technical@novusbio.com)

#### Publications: 2

Protocols, Publications, Related Products, Reviews, Research Tools and Images at:  
[www.novusbio.com/NB100-56625](http://www.novusbio.com/NB100-56625)

Updated 9/9/2025 v.20.1

Earn rewards for product  
reviews and publications.

Submit a publication at [www.novusbio.com/publications](http://www.novusbio.com/publications)

Submit a review at [www.novusbio.com/reviews/destination/NB100-56625](http://www.novusbio.com/reviews/destination/NB100-56625)



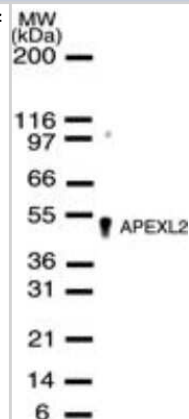
**NB100-56625**

APEX2 Antibody - BSA Free

Product Information	
Unit Size	0.2 ml
Concentration	1.0 mg/ml
Storage	Store at 4C short term. Aliquot and store at -20C long term. Avoid freeze-thaw cycles.
Clonality	Polyclonal
Preservative	0.02% Sodium Azide
Isotype	IgG
Purity	Protein G purified
Buffer	PBS
Target Molecular Weight	57 kDa
Product Description	
Description	Novus Biologicals Rabbit APEX2 Antibody - BSA Free (NB100-56625) is a polyclonal antibody validated for use in WB. Anti-APEX2 Antibody: Cited in 2 publications. All Novus Biologicals antibodies are covered by our 100% guarantee.
Host	Rabbit
Gene ID	27301
Gene Symbol	APEX2
Species	Human
Reactivity Notes	Predicted cross-reactivity based on sequence identity (not validated): Mouse, Rat.
Immunogen	This antibody was generated by immunizing rabbits with EELRALDSEGRALLTQHKI (aa122-140) and GQAKTSEAKDEKELRTSF (aa438-455) peptides of human APEX2.
Product Application Details	
Applications	Western Blot
Recommended Dilutions	Western Blot 1:500-1:1000
Application Notes	In HeLa, a 54 kDa band is observed. The observed molecular weight of the protein may vary from the listed predicted molecular weight due to post translational modifications, post translation cleavages, relative charges, and other experimental factors.

## Images

Western Blot: APEX2 Antibody [NB100-56625] - Western blot analysis of APEXL2 in HeLa cell lysates using NB100-56625 at a dilution of 1:500.



## Publications

Stroik S, Carvajal-Garcia J, Gupta D et al. Stepwise requirements for polymerases  $\gamma$  and  $\delta$  in theta-mediated end joining Nature 2023-11-28 [PMID: 37968395]

Karkhanis V, Wang L, Tae S et al. Protein arginine methyltransferase 7 regulates cellular response to DNA damage by methylating promoter histones H2A and H4 of the polymerase delta catalytic subunit gene, POLD1. J Biol Chem. 2012-08-24 [PMID: 22761421] (WB, Chemotaxis)

### Details:

APEXL2(IMG-466). ChIP: NIH 3T3 cells (Figs 3,5). WB: 3T3-GFP lentiviral infected. knockdown using shRNA (Fig 7). Antibody specificity validated through ChIP assay and western blot knockdown.



### **Novus Biologicals USA**

10730 E. Briarwood Avenue  
Centennial, CO 80112  
USA  
Phone: 303.730.1950  
Toll Free: 1.888.506.6887  
Fax: 303.730.1966  
nb-customerservice@bio-techne.com

### **Bio-Techne Canada**

21 Canmotor Ave  
Toronto, ON M8Z 4E6  
Canada  
Phone: 905.827.6400  
Toll Free: 855.668.8722  
Fax: 905.827.6402  
canada.inquires@bio-techne.com

### **Bio-Techne Ltd**

19 Barton Lane  
Abingdon Science Park  
Abingdon, OX14 3NB, United Kingdom  
Phone: (44) (0) 1235 529449  
Free Phone: 0800 37 34 15  
Fax: (44) (0) 1235 533420  
info.EMEA@bio-techne.com

### **General Contact Information**

www.novusbio.com  
Technical Support: nb-technical@bio-techne.com  
Orders: nb-customerservice@bio-techne.com  
General: novus@novusbio.com

### **Products Related to NB100-56625**

---

NB800-PC1	HeLa Whole Cell Lysate
NBP2-33376H	Blue Marker Antibody (6F4-F6) [HRP]
HAF008	Goat anti-Rabbit IgG Secondary Antibody [HRP]
NB7160	Goat anti-Rabbit IgG (H+L) Secondary Antibody [HRP]
NBP2-24891	Rabbit IgG Isotype Control

---

### **Limitations**

This product is for research use only and is not approved for use in humans or in clinical diagnosis. Primary Antibodies are guaranteed for 1 year from date of receipt.

For more information on our 100% guarantee, please visit [www.novusbio.com/guarantee](http://www.novusbio.com/guarantee)

Earn gift cards/discounts by submitting a review: [www.novusbio.com/reviews/submit/NB100-56625](http://www.novusbio.com/reviews/submit/NB100-56625)

Earn gift cards/discounts by submitting a publication using this product:  
[www.novusbio.com/publications](http://www.novusbio.com/publications)

