

Product Datasheet

TLR4 Antibody (76B357.1) - BSA Free NB100-56566

Unit Size: 0.1 mg

Store at 4C short term. Aliquot and store at -20C long term. Avoid freeze-thaw cycles.

www.novusbio.com



technical@novusbio.com

Reviews: 5 Publications: 148

Protocols, Publications, Related Products, Reviews, Research Tools and Images at:
www.novusbio.com/NB100-56566

Updated 9/9/2025 v.20.1

**Earn rewards for product
reviews and publications.**

Submit a publication at www.novusbio.com/publications

Submit a review at www.novusbio.com/reviews/destination/NB100-56566



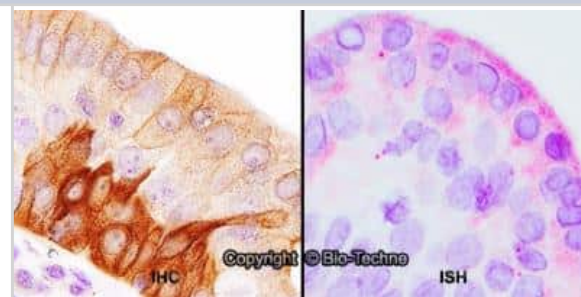
NB100-56566

TLR4 Antibody (76B357.1) - BSA Free

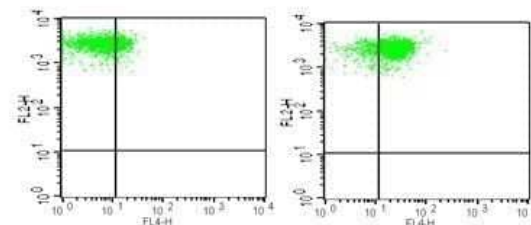
Product Information	
Unit Size	0.1 mg
Concentration	1.0 mg/ml
Storage	Store at 4C short term. Aliquot and store at -20C long term. Avoid freeze-thaw cycles.
Clonality	Monoclonal
Clone	76B357.1
Preservative	0.05% Sodium Azide
Isotype	IgG2b Kappa
Purity	Protein G purified
Buffer	PBS
Target Molecular Weight	95.7 kDa
Product Description	
Description	Novus Biologicals Knockout (KO) Validated Mouse TLR4 Antibody (76B357.1) - BSA Free (NB100-56566) is a monoclonal antibody validated for use in IHC, WB, ELISA, Flow, Dual RNAscope ISH-IHC, ICC/IF, Simple Western and ChIP. Anti-TLR4 Antibody: Cited in 139 publications. All Novus Biologicals antibodies are covered by our 100% guarantee.
Host	Mouse
Gene ID	7099
Gene Symbol	TLR4
Species	Human, Mouse, Rat, Porcine, Bovine, Mammal
Immunogen	This TLR4 Antibody (76B357.1) was developed against a portion of amino acids 100-200 of human TLR4 (NP_612564).
Product Application Details	
Applications	Western Blot, Simple Western, Immunohistochemistry-Paraffin, Dot Blot, ELISA, Flow Cytometry, Flow (Cell Surface), Flow (Intracellular), Immunocytochemistry/Immunofluorescence, Immunohistochemistry, Immunohistochemistry-Frozen, In vitro assay, SDS-Page, Block/Neutralize, Chromatin Immunoprecipitation (ChIP), CyTOF-ready, Dual RNAscope ISH-IHC, ELISA Capture (Matched Antibody Pair), Knockdown Validated, Knockout Validated
Recommended Dilutions	Western Blot 1-3 ug/ml, Simple Western, Flow Cytometry, ELISA, Immunohistochemistry 1:10-1:500, Immunocytochemistry/ Immunofluorescence 1:10-1:500, Immunohistochemistry-Paraffin 5 ug/ml, Immunohistochemistry-Frozen 1:500, In vitro assay, Dot Blot, SDS-Page reported in scientific literature (PMID 33166339), Flow (Cell Surface), Flow (Intracellular), ELISA Capture (Matched Antibody Pair) 0.5 ug, Chromatin Immunoprecipitation (ChIP) 1:10-1:500, CyTOF-ready, Knockout Validated, Knockdown Validated, Block/Neutralize, Dual RNAscope ISH-IHC

Images

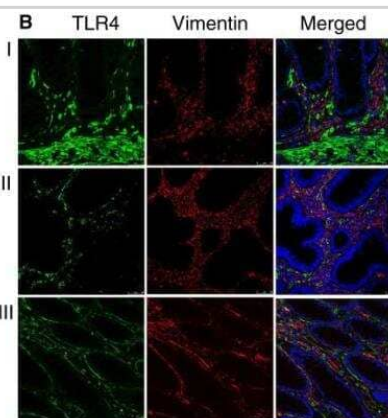
Dual RNAscope ISH-IHC: TLR4 Antibody (76B357.1) [NB100-56566] - FFPE tissue sections of human tonsil were probed for TLR4 mRNA (ACD RNAscope Probe, ACD catalog # 311281; Fast Red chromogen, ACD catalog # 322750). Adjacent tissue section was processed for immunohistochemistry using Mouse Monoclonal (Novus Biologicals catalog # NB100-56566) at 5ug/mL with 1 hour incubation at room temperature followed by incubation with anti-mouse IgG VisUCyte HRP Polymer Antibody (Catalog # VC001) and DAB chromogen (yellow-brown). Tissue was counterstained with hematoxylin (blue). Specific staining was localized to lymphocytes.



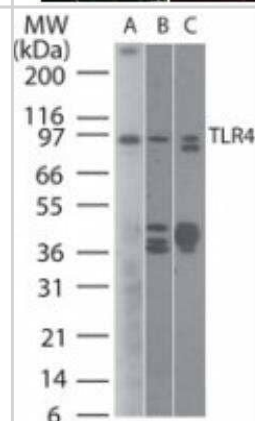
Flow Cytometry: TLR4 Antibody (76B357.1) [NB100-56566] - Analysis using the Alexa Fluor (R) 647 conjugate of NBP2-27149. TLR4 expression on monocytes from human peripheral blood. PBMC were stained in a 2 color flow test, with CD14 PE version of this antibody and 1 ug of either isotype control (left) or TLR4-Alexa Fluor 647 (right). PPI negative, CD14+ cells were gated for analysis.



Immunohistochemistry: TLR4 Antibody (76B357.1) [NB100-56566] - Pericyptal Myofibroblasts are Responsible for Increased TLR4 Expression in a Subset of CRCs. Double-stained immunofluorescence for TLR4 (green) and vimentin (red) in normal (I), adenoma (II), and colon adenocarcinoma (III) (10x). In the stromal compartment of CRCs, immunofluorescent staining for TLR4 localized to the pericyptal myofibroblasts in a subset of samples. Image collected and cropped by CiteAb from the following publication (<https://www.jecr.com/content/33/1/45>), licensed under a CC-BY license.



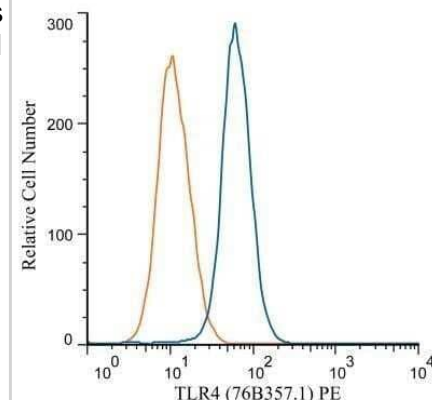
Western Blot: TLR4 Antibody (76B357.1) [NB100-56566] - Analysis using 2 ug/mL on (A) human intestine and 6 ug/mL on (B) mouse intestine and (C) rat intestine lysate.



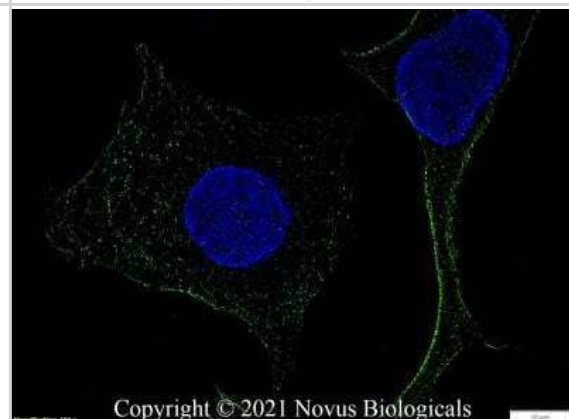
Immunohistochemistry: TLR4 Antibody (76B357.1) [NB100-56566] - Pericryptal Myofibroblasts are Responsible for Increased TLR4 Expression in a Subset of CRCs. IHC staining of colon adenocarcinoma for TLR4, vimentin, and alpha-SMA (40x). Staining co-localizes to the pericryptal space, confirming the signal arises from pericryptal myofibroblasts. Image collected and cropped by CiteAb from the following publication (<https://www.jeccr.com/content/33/1/45>), licensed under a CC-BY license.



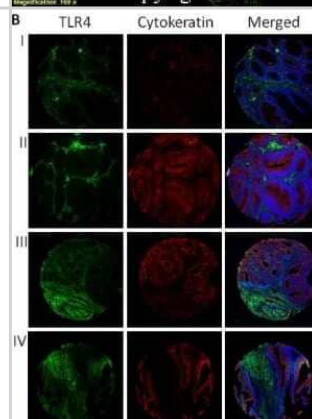
Flow (Intracellular): TLR4 Antibody (76B357.1) [NB100-56566] - Analysis using PE conjugate of NBP2-27149. An intracellular stain was performed on Jurkat cells with TLR4 antibody (76B357.1) NBP2-27149PE (blue) and an isotype control MAB004 (orange). Cells were fixed with 4% PFA and then permeabilized with 0.1% saponin. Cells were incubated in an antibody dilution of 2.5 ug/mL for 30 minutes at room temperature. Both antibodies were conjugated to phycoerythrin.



Immunocytochemistry/Immunofluorescence: TLR4 Antibody (76B357.1) [NB100-56566] - RH-30 cells were fixed in 4% paraformaldehyde for 10 minutes and permeabilized in 0.05% Triton X-100 in PBS for 5 minutes. The cells were incubated with anti-TLR4 Antibody (76B357.1) NB100-56566 at 1 ug/ml overnight at 4C and detected with an anti-mouse Dylight 488 (Green) at a 1:1000 dilution for 60 minutes. Nuclei were counterstained with DAPI (Blue). Cells were imaged using a 100X objective and digitally deconvolved.



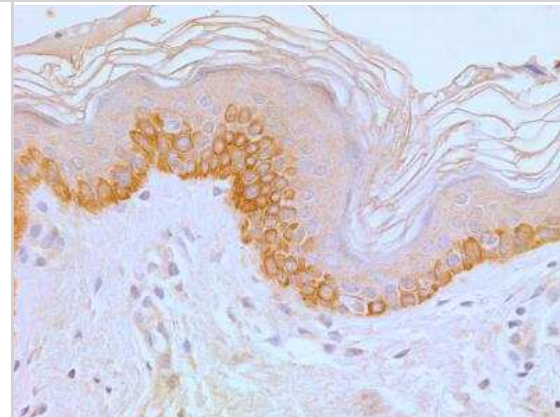
Immunohistochemistry: TLR4 Antibody (76B357.1) [NB100-56566] - Immunofluorescent staining of TMAs. Representative tissue cores from normal (I), adenomatous polyps (II), and CRC (III and IV) are shown. Image collected and cropped by CiteAb from the following publication (<https://www.jeccr.com/content/33/1/45>), licensed under a CC-BY license.



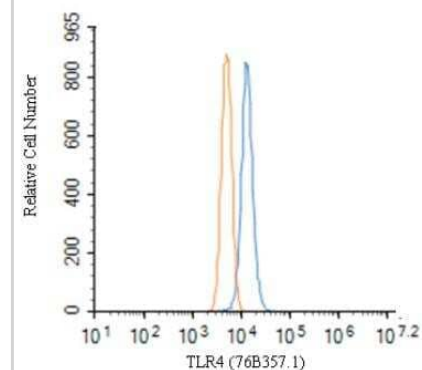
Immunohistochemistry-Paraffin: TLR4 Antibody (76B357.1) [NB100-56566] - Analysis of rat salivary gland tissue section at 1:100 dilution. The antibody generated a membrane-cytoplasmic staining in the tissue with stronger signal in ductal epithelial cells.



Immunohistochemistry-Paraffin: TLR4 Antibody (76B357.1) [NB100-56566] - Tissue section of normal human skin stained with antibody at 5 ug/mL. Membrane-cytoplasmic immunopositivity of TLR4 was primarily observed in the pigmented basal cells and the adjacent keratinocytes in the epidermal layer.



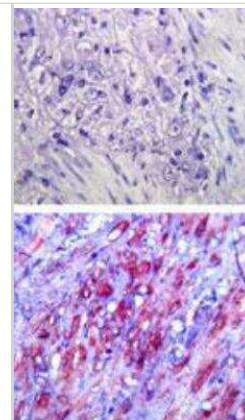
Flow Cytometry: TLR4 Antibody (76B357.1) [NB100-56566] - An intracellular stain was performed on RH30 cells with TLR4 Antibody (76B357.1) NB100-56566 (blue) and a matched mouse IgG2b Kappa isotype control (orange) MAB004. Cells were fixed with 4% PFA and then permeabilized with 0.1% saponin. Cells were incubated in an antibody dilution of 2.5 ug/mL for 30 minutes at room temperature, followed by Mouse IgG (H+L) Cross-Adsorbed Secondary Antibody, Dylight 550 (35503, Thermo Fisher).



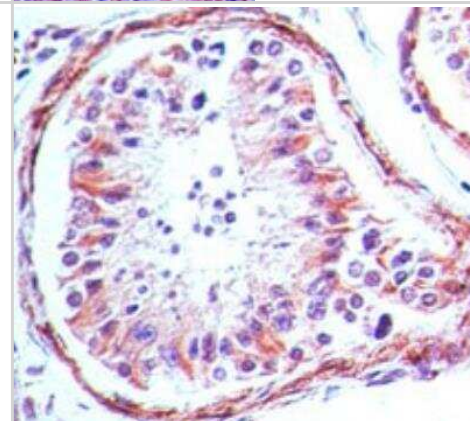
Immunohistochemistry-Paraffin: TLR4 Antibody (76B357.1) [NB100-56566] - Human skin stained with at 5 ug/mL, peroxidase-conjugate and DAB chromogen. Staining of formalin-fixed tissues is enhanced by boiling tissue sections in 10 mM sodium citrate buffer, pH 6.0 for 10-20 min followed by cooling at RT for 20 min.



Immunohistochemistry-Paraffin: TLR4 Antibody (76B357.1) [NB100-56566] - Analysis of TLR4 in FFPE human colon tissue using an isotype control (top) and NB100-56566 (bottom) at 5 ug/mL.



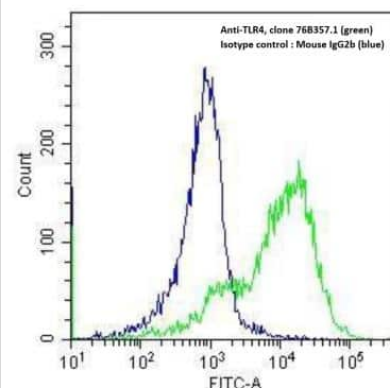
Immunohistochemistry-Paraffin: TLR4 Antibody (76B357.1) [NB100-56566] - Human testis tissue stained with antibody at 5 ug/mL.



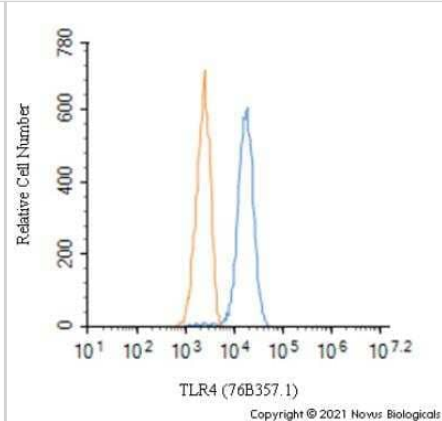
Immunohistochemistry-Frozen: TLR4 Antibody (76B357.1) [NB100-56566] - This image is TLR4(green) and nucleus(blue) at area postrema of the adult male mouse brain, x20 magnification. Primary antibody diluted 1:500. IHC-Fr image submitted by a verified customer review.



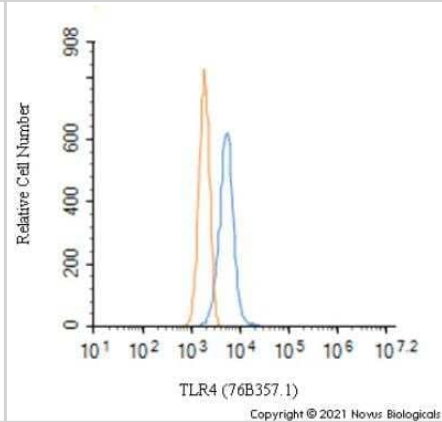
Flow Cytometry: TLR4 Antibody (76B357.1) [NB100-56566] - Analysis of formaldehyde fixed THP-1 cells (human monocytic leukemia cells) using 2 ug/10⁶ cells TLR4 antibody (clone 76B357.1) with detection employing a donkey anti-mouse IgG (H+L) cross adsorbed secondary antibody, (DyLight 488 conjugated). Isotype control samples incubated with mouse IgG2b isotype control antibody were processed in parallel under the same assay conditions.



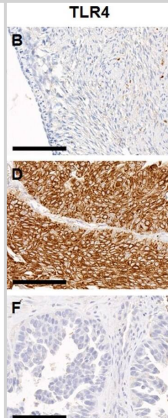
Flow Cytometry: TLR4 Antibody (76B357.1) [NB100-56566] - An intracellular stain was performed on Jurkat cells with TLR4 Antibody (76B357.1) NB100-56566 (blue) and a matched mouse IgG2b Kappa isotype control (orange) MAB004. Cells were fixed with 4% PFA and then permeabilized with 0.1% saponin. Cells were incubated in an antibody dilution of 2.5 ug/mL for 30 minutes at room temperature, followed by Mouse IgG (H+L) Cross-Adsorbed Secondary Antibody, Dylight 550 (35503, Thermo Fisher).



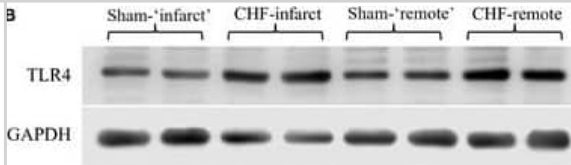
Flow Cytometry: TLR4 Antibody (76B357.1) [NB100-56566] - An intracellular stain was performed on Raw264.7 cells with TLR4 Antibody (76B357.1) NB100-56566 (blue) and a matched mouse IgG2b Kappa isotype control (orange) MAB004. Cells were fixed with 4% PFA and then permeabilized with 0.1% saponin. Cells were incubated in an antibody dilution of 2.5 ug/mL for 30 minutes at room temperature, followed by Mouse IgG (H+L) Cross-Adsorbed Secondary Antibody, Dylight 550 (35503, Thermo Fisher).



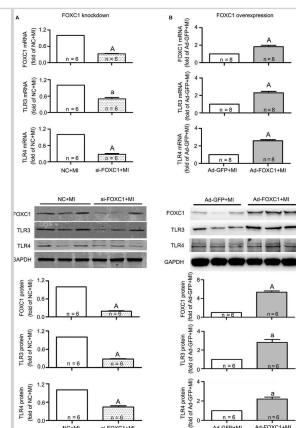
Representative images of immunohistochemical staining of pancreatic adenocarcinoma upregulated factor (PAUF) and toll-like receptor 4 (TLR4) in human ovarian cancer specimens. The top row (A,B) represents normal ovarian tissue, middle row (C,D) shows immunoreactivity of ovarian carcinomas and the bottom row (E,F) indicates immunonegativity of ovarian carcinoma. The stromal cells of normal ovarian tissue show immunonegativity for PAUF and TLR4. The scale bar represents 100 μ m.



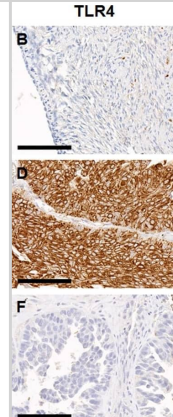
Western Blot: TLR4 Antibody (76B357.1) - BSA Free [NB100-56566] - Increased toll-like receptor 4 (TLR4) expression in the myocardium of chronic heart failure (CHF) rats. (A) TLR4 mRNA levels in infarct & remote myocardium of sham & CHF rats (n = 6/group). (B) Representative Western blot images & (C) quantification of TLR4 proteins in infarct & remote myocardium of sham & CHF rats (n = 4/group). (D) Representative immunohistochemistry images of heart sections stained with TLR4 (green) & CD45 (red). The yellow box indicates the enlarged area shown on the right (data are means \pm SD, *P < 0.05, **P < 0.01 versus respective sham). Image collected & cropped by CiteAb from the following publication (<https://pubmed.ncbi.nlm.nih.gov/26290459>), licensed under a CC-BY license. Not internally tested by Novus Biologicals.



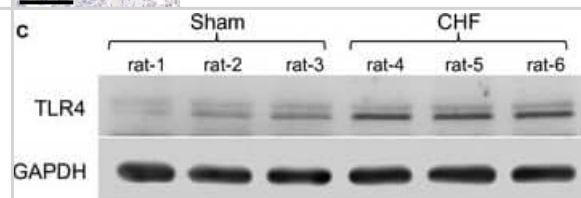
Western Blot: TLR4 Antibody (76B357.1) - BSA Free [NB100-56566] - Regulation of FOXC1 on TLR3/4 expression in mice subjected to myocardial ischaemia (MI). The siRNA against FOXC1 (siFOXC1) or FOXC1 adenovirus (AdFOXC1) was injected into the left ventricle just after LAD ligation to generate FOXC1 knockdown (A) or FOXC1 overexpression (B), & the negative control (NC) siRNA & AdGFP served as control, respectively. The mRNA (upper panel) & protein (middle & lower panel) levels of TLR3/4 were determined after 2 wk. Data are means \pm SEM $aP < .05$, $AP < .01$ vs respective MI Image collected & cropped by CiteAb from the following publication (<https://pubmed.ncbi.nlm.nih.gov/31517441>), licensed under a CC-BY license. Not internally tested by Novus Biologicals.



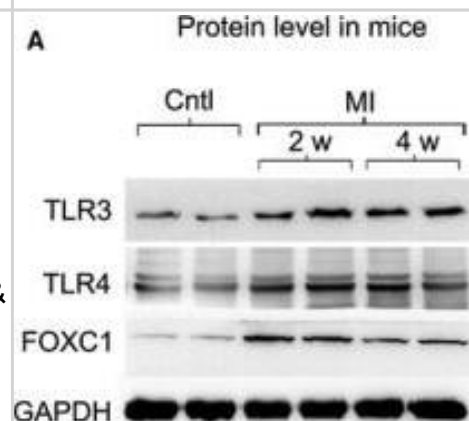
Immunohistochemistry: TLR4 Antibody (76B357.1) - BSA Free [NB100-56566] - Representative images of immunohistochemical staining of pancreatic adenocarcinoma upregulated factor (PAUF) & toll-like receptor 4 (TLR4) in human ovarian cancer specimens. The top row (A,B) represents normal ovarian tissue, middle row (C,D) shows immunoreactivity of ovarian carcinomas & the bottom row (E,F) indicates immunonegativity of ovarian carcinoma. The stromal cells of normal ovarian tissue show immunonegativity for PAUF & TLR4. The scale bar represents 100 μ m. Image collected & cropped by CiteAb from the following publication (<https://pubmed.ncbi.nlm.nih.gov/30111860>), licensed under a CC-BY license. Not internally tested by Novus Biologicals.



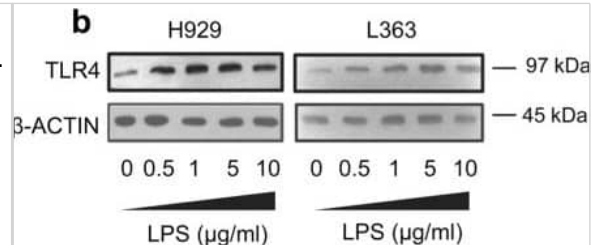
Western Blot: TLR4 Antibody (76B357.1) - BSA Free [NB100-56566] - Increased toll-like receptor 4 (TLR4) expression in the surviving cardiomyocytes of chronic heart failure (CHF) rats. (A) Representative immunofluorescent images of TLR4 in cardiomyocytes isolated from sham & CHF rats. (B) TLR4 mRNA levels in cardiomyocytes isolated from sham & CHF rats. (C) Representative Western blot images & (D) quantification of TLR4 proteins in cardiomyocytes isolated from sham & CHF rats (data are means \pm SD, $n = 6$ /group, $**P < 0.01$ versus sham). Image collected & cropped by CiteAb from the following publication (<https://pubmed.ncbi.nlm.nih.gov/26290459>), licensed under a CC-BY license. Not internally tested by Novus Biologicals.



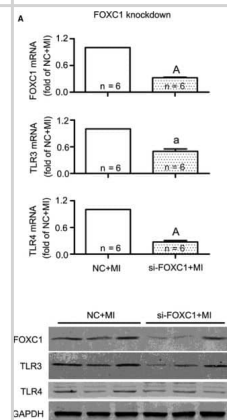
Western Blot: TLR4 Antibody (76B357.1) - BSA Free [NB100-56566] - Up-regulation of FOXC1 & TLR3/4 protein levels under myocardial ischaemia. Representative Western blot images & quantitative data for FOXC1, TLR3 & TLR4 proteins in ischaemia models of mice (A), H9c2 cells (B) & NRVMs (C) are shown herein. Validation data of the antibodies for TLR3 & TLR4 are shown in Figure S1. Data are means \pm SEM. $n = \sim 4-5$ /group. P values from the one-way ANOVAs: 0.018 (TLR3 protein in mice), .002 (TLR4 protein in mice) & 0.006 (FOXC1 protein in mice). $aP < .05$, $AP < .01$ vs control Image collected & cropped by CiteAb from the following publication (<https://pubmed.ncbi.nlm.nih.gov/31517441>), licensed under a CC-BY license. Not internally tested by Novus Biologicals.



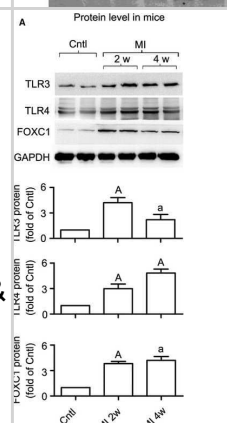
Western Blot: TLR4 Antibody (76B357.1) - BSA Free [NB100-56566] - (a) Cell viability of MM cells exposed to increasing doses of LPS for 24 h. (b) Immunoblotting analysis of TLR4 protein expression levels in H929 & L363 cell lines after incubation with various LPS concentrations. Probing with β -ACTIN was used as total protein loading reference. (c) Flow cytometry analysis for TLR4 expression of MM cell lines before & after exposure to 1 μ g/ml LPS for 24 h. (d) Cell viability of MM cell lines pre-treated with 0.5 μ g/ml TLR4 inhibitor for 24 h before stimulation with LPS for 24 h. (e) Cell viability of H929 & JN3 cell lines exposed to increasing concentrations of TLR4 inhibitor for 48 h. β -ACTIN probing was used as reference for total protein input. Image collected & cropped by CiteAb from the following publication (<https://pubmed.ncbi.nlm.nih.gov/30824741>), licensed under a CC-BY license. Not internally tested by Novus Biologicals.



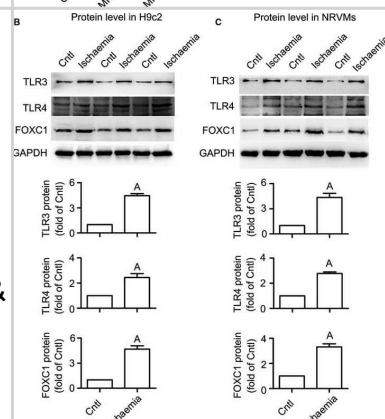
Western Blot: TLR4 Antibody (76B357.1) - BSA Free [NB100-56566] - Regulation of FOXC1 on TLR3/4 expression in mice subjected to myocardial ischaemia (MI). The siRNA against FOXC1 (si-FOXC1) or FOXC1 adenovirus (Ad-FOXC1) was injected into the left ventricle just after LAD ligation to generate FOXC1 knockdown (A) or FOXC1 overexpression (B), & the negative control (NC) siRNA & Ad-GFP served as control, respectively. The mRNA (upper panel) & protein (middle & lower panel) levels of TLR3/4 were determined after 2 wk. Data are means \pm SEM $aP < .05$, $AP < .01$ vs respective MI Image collected & cropped by CiteAb from the following publication (<https://pubmed.ncbi.nlm.nih.gov/31517441>), licensed under a CC-BY license. Not internally tested by Novus Biologicals.



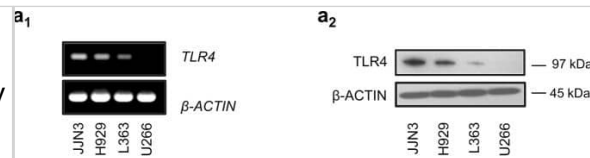
Western Blot: TLR4 Antibody (76B357.1) - BSA Free [NB100-56566] - Up-regulation of FOXC1 & TLR3/4 protein levels under myocardial ischaemia. Representative Western blot images & quantitative data for FOXC1, TLR3 & TLR4 proteins in ischaemia models of mice (A), H9c2 cells (B) & NRVMs (C) are shown herein. Validation data of the antibodies for TLR3 & TLR4 are shown in Figure S1. Data are means \pm SEM. $n = \sim 4-5$ /group. P values from the one-way ANOVAs: 0.018 (TLR3 protein in mice), .002 (TLR4 protein in mice) & 0.006 (FOXC1 protein in mice). $aP < .05$, $AP < .01$ vs control Image collected & cropped by CiteAb from the following publication (<https://pubmed.ncbi.nlm.nih.gov/31517441>), licensed under a CC-BY license. Not internally tested by Novus Biologicals.



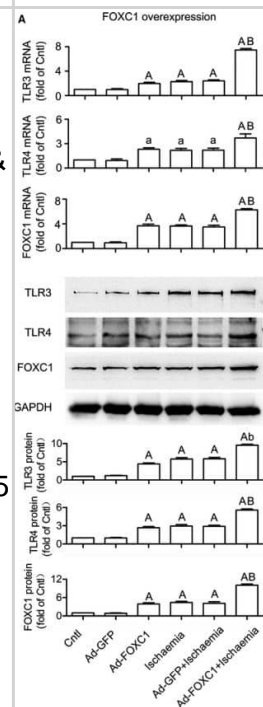
Western Blot: TLR4 Antibody (76B357.1) - BSA Free [NB100-56566] - Up-regulation of FOXC1 & TLR3/4 protein levels under myocardial ischaemia. Representative Western blot images & quantitative data for FOXC1, TLR3 & TLR4 proteins in ischaemia models of mice (A), H9c2 cells (B) & NRVMs (C) are shown herein. Validation data of the antibodies for TLR3 & TLR4 are shown in Figure S1. Data are means \pm SEM. $n = \sim 4-5$ /group. P values from the one-way ANOVAs: 0.018 (TLR3 protein in mice), .002 (TLR4 protein in mice) & 0.006 (FOXC1 protein in mice). $aP < .05$, $AP < .01$ vs control Image collected & cropped by CiteAb from the following publication (<https://pubmed.ncbi.nlm.nih.gov/31517441>), licensed under a CC-BY license. Not internally tested by Novus Biologicals.



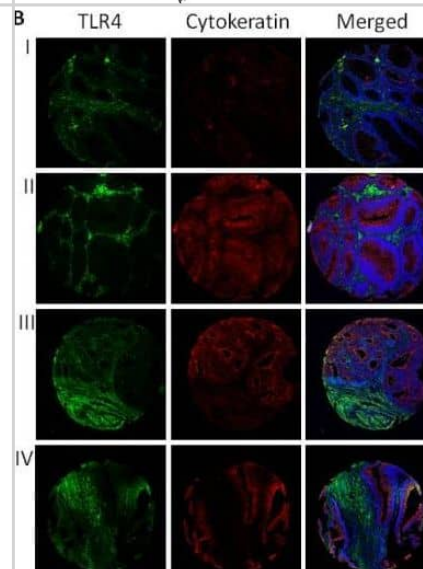
Western Blot: TLR4 Antibody (76B357.1) - BSA Free [NB100-56566] - TLR4 mRNA (a1) & protein (a2) expression in MM cell lines. (b) TLR4 mRNA expression of 16 CD138+ selected MM patients as determined by PCR & agarose gel electrophoresis. Probing with β -ACTIN was used as total protein loading reference, whereas β -ACTIN gene expression was used as reference for RNA input. β -ACTIN probing & β -ACTIN mRNA expression were used as reference for total protein & mRNA input, respectively. Image collected & cropped by CiteAb from the following publication (<https://pubmed.ncbi.nlm.nih.gov/30824741>), licensed under a CC-BY license. Not internally tested by Novus Biologicals.



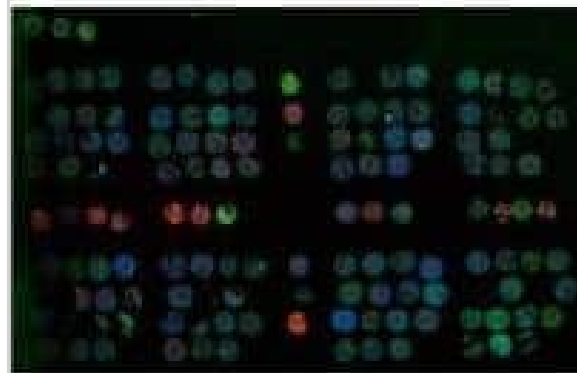
Western Blot: TLR4 Antibody (76B357.1) - BSA Free [NB100-56566] - Regulation of FOXC1 on TLR expression. H9c2 cells were transfected with adenovirus or siRNA to overexpress or knock down FoxC1, with GFP adenovirus (Ad-GFP) & negative control (NC) siRNA serving as control, respectively. A, FoxC1 overexpression increased Tlr3/4 mRNA & protein levels, under both control & ischaemic conditions. P values from the one-way ANOVAs: <.001 (TLR3 mRNA), .002 (TLR4 mRNA), <.001 (FOXC1 mRNA), <.001 (TLR3 protein), <0.001 (TLR4 protein) & <.001 (FOXC1 protein). B, FoxC1 knockdown decreased Tlr3/4 mRNA & protein levels. P values from the one-way ANOVAs: .001 (TLR3 mRNA), <.001 (TLR4 mRNA), <.001 (FOXC1 mRNA), .002 (TLR3 protein), <.001 (TLR4 protein) & <.001 (FOXC1 protein). C, FoxC1 overexpression up-regulated the mRNA expression of multiple Tlr subtypes. P values from the one-way ANOVAs: .022 (TLR1 mRNA), .047 (TLR2 mRNA), .002 (TLR3 mRNA), .013 (TLR4 mRNA), .039 (TLR5 mRNA), .003 (TLR6 mRNA), .203 (TLR7 mRNA), .078 (TLR8 mRNA) & .009 (TLR9 mRNA). Data are means \pm SEM of 4 independent experiments. aP < .05, AP < .01 vs. control; bP < .05, BP < 0.01 vs. ischaemia Image collected & cropped by CiteAb from the following publication (<https://pubmed.ncbi.nlm.nih.gov/31517441>), licensed under a CC-BY license. Not internally tested by Novus Biologicals.



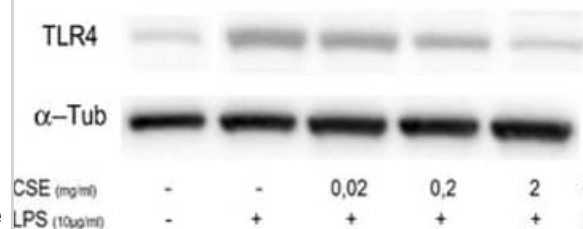
Immunocytochemistry/ Immunofluorescence: TLR4 Antibody (76B357.1) - BSA Free [NB100-56566] - Immunofluorescent staining of TMAs. A) Low power (10x) view of NCI TMA slide stained for TLR4 (green), intestinal epithelium/pan-cytokeratin (red), & nucleus/DAPI (blue). B) Representative tissue cores from normal (I), adenomatous polyps (II), & CRC (III & IV) are shown. C & D) TLR4 staining score by tissue type & tissue compartment (stroma vs epithelium) are shown. C) TLR4 staining in the tumor stroma had a significantly higher average intensity score for stages 3 & 4 CRC when compared to stage 1. D) TLR4 staining in the tumor epithelium had a significantly higher average intensity score for stages 2 & 3 when compared to stage 1. E) TLR4 staining by compartment broken down by stage (controlling for grade) & grade (controlling for stage). Image collected & cropped by CiteAb from the following publication (<https://jccr.biomedcentral.com/articles/10.1186/1756-9966-33-45>), licensed under a CC-BY license. Not internally tested by Novus Biologicals.



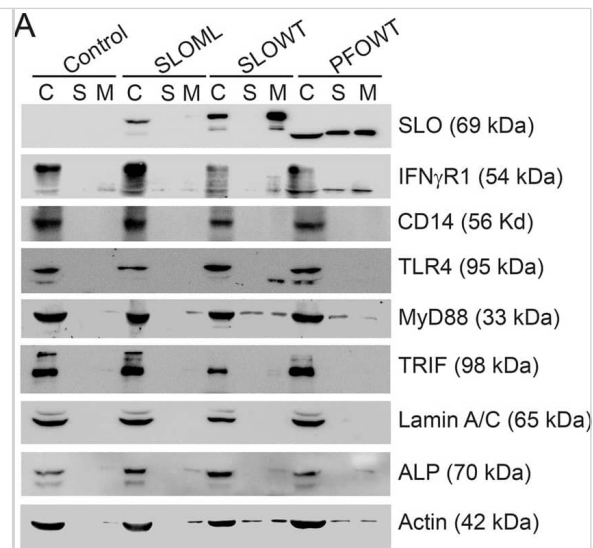
Immunocytochemistry/ Immunofluorescence: TLR4 Antibody (76B357.1) - BSA Free [NB100-56566] - Immunofluorescent staining of TMAs. A) Low power (10x) view of NCI TMA slide stained for TLR4 (green), intestinal epithelium/pan-cytokeratin (red), & nucleus/DAPI (blue). B) Representative tissue cores from normal (I), adenomatous polyps (II), & CRC (III & IV) are shown. C & D) TLR4 staining score by tissue type & tissue compartment (stroma vs epithelium) are shown. C) TLR4 staining in the tumor stroma had a significantly higher average intensity score for stages 3 & 4 CRC when compared to stage 1. D) TLR4 staining in the tumor epithelium had a significantly higher average intensity score for stages 2 & 3 when compared to stage 1. E) TLR4 staining by compartment broken down by stage (controlling for grade) & grade (controlling for stage). Image collected & cropped by CiteAb from the following publication (<https://jeccr.biomedcentral.com/articles/10.1186/1756-9966-33-45>), licensed under a CC-BY license. Not internally tested by Novus Biologicals.

A

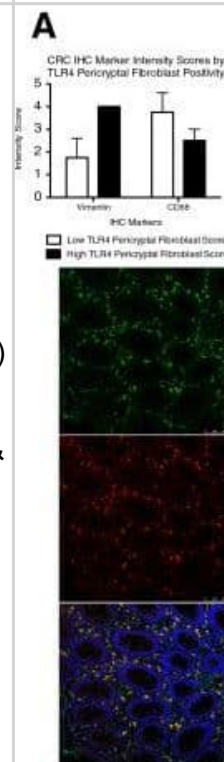
Western Blot: TLR4 Antibody (76B357.1) - BSA Free [NB100-56566] - Effect of Cucumis sativus L. extract (CSE) on LPS induced TLR4 expression. a Expression of TLR4 mRNA in pAECs treated with LPS (10 µg/ml) for different time (1, 7, 24 h) in the presence or absence of increasing doses of CSE (0.02; 0.2; 2 mg/ml). mRNA expression of TLR4 is determined by quantitative PCR; relative expression was calculated as fold of change in respect to the control cells & error bar represents the range of relative expression. Different letters above the bars indicate significant differences. b Representative Western Blot of TLR4 & relative housekeeping α-tubulin were reported. c Expression of TLR4 protein in pAECs treated with LPS (10 µg/ml) in the presence or absence of increasing doses CSE (0.02; 0.2; 2 mg/ml); data shown are representative of at least three independent experiments & represent the mean ± SEM. Different letters above the bars indicate significant differences (p < 0.05 ANOVA post hoc Tukey's test) Image collected & cropped by CiteAb from the following publication (<https://bmccomplementalternmed.biomedcentral.com/articles/10.1186/s12906-018-2254-1>), licensed under a CC-BY license. Not internally tested by Novus Biologicals.

b

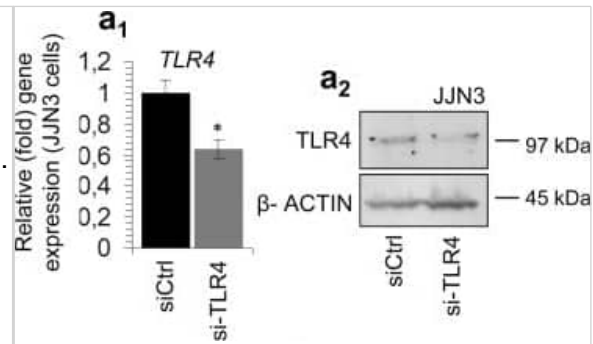
Western Blot: TLR4 Antibody (76B357.1) - BSA Free [NB100-56566] - Activation receptors are shed during intrinsic repair. (A) BMDM were unchallenged (control) or challenged with 500 HU/mL SLO WT, PFO or an equivalent mass of SLO ML for 10 min at 37 °C & centrifuged at 2000 × g for 5 min to yield cell pellet (C). Supernatants were spun at 100,000xg for 40 min at 4 °C to collect the high speed supernatant (S) & microvesicle pellet (M). Samples were solubilized at 95 °C in SDS-sample buffer, resolved by SDS-PAGE & transferred to nitrocellulose. Portions of the blot were probed with 6D11 anti-SLO, anti-IFN γ R1, 4B4F12 anti-CD14, 76B357.1 anti-TLR4, O91B8 anti-MyD88, 1H4B01 anti-Trif, EPR4477 anti-Alkaline Phosphatase, MANLAC-4A7 anti-Lamin A/C, & AC-15 anti- β -Actin antibodies followed by relevant secondary antibodies & ECL. Full-length blots are presented in Supplementary Figure S1. (B) BMDM were challenged with 500 HU/mL SLO WT or SLO N402C, SLO ML at equivalent mass to SLO WT, or SLO N402E at equivalent mass to SLO N402C for 10 min. Cell pellets (C), high speed supernatants (S) & microvesicles (M) were isolated as in (A) & probed with 6D11 anti-Streptolysin O, 76B357.1 anti-TLR4, O91B8 anti-MyD88, 1H4B01 anti-Trif, EPR4477 anti-Alkaline Phosphatase, MANLAC-4A7 anti-Lamin A/C, & AC-15 anti- β -Actin antibodies. Full-length blots are presented in Supplementary Figure S2. The blots are representative of at least 3 independent experiments. Image collected & cropped by CiteAb from the following publication (<https://www.nature.com/articles/s41598-018-24955-2>), licensed under a CC-BY license. Not internally tested by Novus Biologicals.



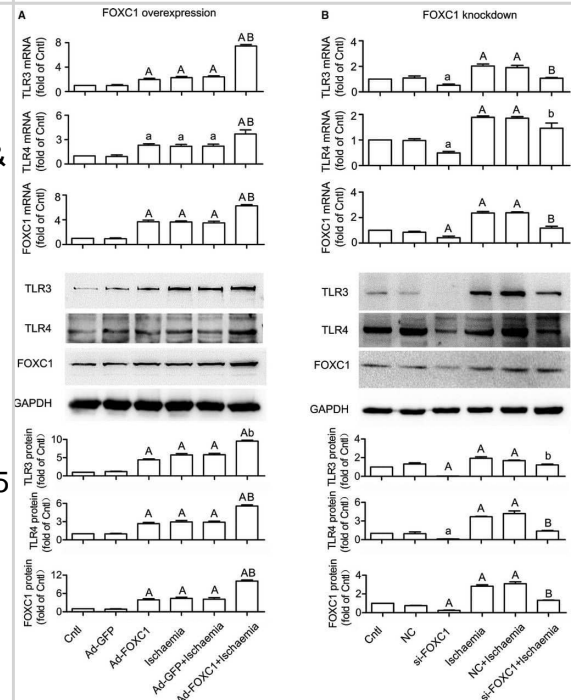
Immunocytochemistry/ Immunofluorescence: TLR4 Antibody (76B357.1) - BSA Free [NB100-56566] - Pericyptal Myofibroblasts are Responsible for Increased TLR4 Expression in a Subset of CRCs. A) CRCs were separated into two groups representing low- & high- stromal expression of TLR4 by IHC staining. In normal tissue, stromal TLR4 expression is mainly due to macrophages (Green: TLR4, Red: CD68, Merge: TLR4 + CD68 + DAPI (blue)). Conversely, in CRCs increased vimentin & decreased CD68 staining in the pericyptal space confirm that this signal was due to pericyptal myofibroblasts & not related to tumor-associated macrophages. B) Double-stained immunofluorescence for TLR4 (green) & vimentin (red) in normal (I), adenoma (II), & colon adenocarcinoma (III) (10 \times). In the stromal compartment of CRCs, immunofluorescent staining for TLR4 localized to the pericyptal myofibroblasts in a subset of samples. C) IHC staining of colon adenocarcinoma for TLR4, vimentin, & α -SMA (40 \times). Staining co-localizes to the pericyptal space, confirming the signal arises from pericyptal myofibroblasts. D, E, & F) An increase in IHC staining for α -SMA & vimentin was noted in CRCs when compared to normal or low grade dysplasia. A decrease in staining for CD68 positive macrophages was observed with higher degrees of dysplasia. Image collected & cropped by CiteAb from the following publication (<https://jeccr.biomedcentral.com/articles/10.1186/1756-9966-33-45>), licensed under a CC-BY license. Not internally tested by Novus Biologicals.



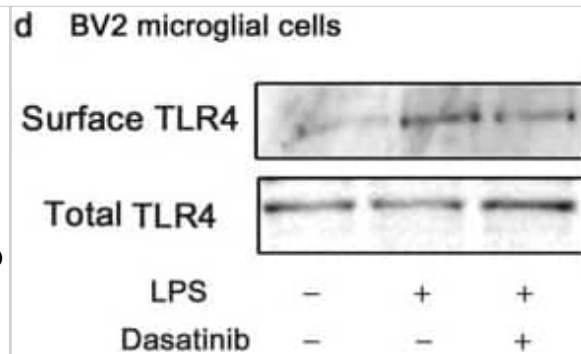
Western Blot: TLR4 Antibody (76B357.1) - BSA Free [NB100-56566] - (a1) Q-PCR assay of TLR4 mRNA expression levels after transfecting JLN3 cell line with TLR4 RNAi oligonucleotides or a non-targeting pool (siCtrl) for 48 h. (a2) Representative immunoblotting analyses of protein samples probed with an antibody against TLR4 after TLR4 RNAi for 48 h. (b1) % cell viability & (b2) % proliferation of JLN3 cells after TLR4 RNAi for 48 h. (c,d1) Q-PCR expression analyses of TLR4 mRNA expression levels after transfecting H929 (c) & U266 (d1) cell lines with the pCMV6-TLR4 construct or a pCMV6 empty vector for 48 h. (d2) Immunoblotting analyses of U266 cells transfected with pCMV6-TLR4 or pCMV6 vector for 48 h; protein samples were probed with an antibody against TLR4. (e1) % cell viability & (e2) % proliferation of H929 & U266 cells after transfection with the pCMV6-TLR4 construct or with the empty pCMV6 vector for 48 h. β -ACTIN probing & β -ACTIN mRNA expression were used as reference for total protein & mRNA input, respectively. Cells transfected with the pCMV6-TLR4 construct are labelled as TLR4 OE (TLR4 overexpression), whereas cells transfected with the pCMV6 empty vector are labelled as Con (control). Image collected & cropped by CiteAb from the following publication (<https://pubmed.ncbi.nlm.nih.gov/30824741>), licensed under a CC-BY license. Not internally tested by Novus Biologicals.



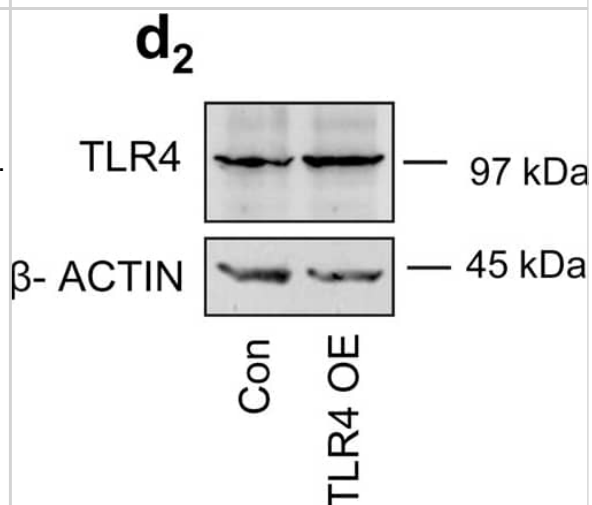
Western Blot: TLR4 Antibody (76B357.1) - BSA Free [NB100-56566] - Regulation of FOXC1 on TLR expression. H9c2 cells were transfected with adenovirus or siRNA to overexpress or knock down FoxC1, with GFP adenovirus (Ad-GFP) & negative control (NC) siRNA serving as control, respectively. A, FoxC1 overexpression increased Tlr3/4 mRNA & protein levels, under both control & ischaemic conditions. P values from the one-way ANOVAs: <.001 (TLR3 mRNA), .002 (TLR4 mRNA), <.001 (FOXC1 mRNA), <.001 (TLR3 protein), <0.001 (TLR4 protein) & <.001 (FOXC1 protein). B, FoxC1 knockdown decreased Tlr3/4 mRNA & protein levels. P values from the one-way ANOVAs: .001 (TLR3 mRNA), <.001 (TLR4 mRNA), <.001 (FOXC1 mRNA), .002 (TLR3 protein), <.001 (TLR4 protein) & <.001 (FOXC1 protein). C, FoxC1 overexpression up-regulated the mRNA expression of multiple Tlr subtypes. P values from the one-way ANOVAs: .022 (TLR1 mRNA), .047 (TLR2 mRNA), .002 (TLR3 mRNA), .013 (TLR4 mRNA), .039 (TLR5 mRNA), .003 (TLR6 mRNA), .203 (TLR7 mRNA), .078 (TLR8 mRNA) & .009 (TLR9 mRNA). Data are means \pm SEM of 4 independent experiments. aP < .05, AP < .01 vs. control; bP < .05, BP < 0.01 vs. ischaemia Image collected & cropped by CiteAb from the following publication (<https://pubmed.ncbi.nlm.nih.gov/31517441>), licensed under a CC-BY license. Not internally tested by Novus Biologicals.



Western Blot: TLR4 Antibody (76B357.1) - BSA Free [NB100-56566] - Dasatinib affects TLR4 signaling to regulate LPS-induced proinflammatory cytokine levels in BV2 microglial cells. a BV2 microglial cells were pretreated with TAK-242 (a TLR4 receptor inhibitor, 500 nM) or vehicle (1% DMSO) for 30 min, treated with dasatinib (250 nM) or vehicle (1% DMSO) for 30 min, & treated with LPS (1 µg/ml) or PBS for 5 h. The mRNA levels of COX-2 & IL-6 were analyzed by RT-PCR. b, c Quantification of the data in a (COX-2: con, n = 10; LPS, n = 10; dasatinib+LPS, n = 10; TAK-242+LPS, n = 10; TAK-242+dasatinib+LPS, n = 10; & IL-6: con, n = 14; LPS, n = 14; dasatinib+LPS, n = 14; TAK-242+LPS, n = 14; TAK-242+ dasatinib+LPS, n = 14). d BV2 microglial cells were treated with dasatinib (250 nM) or vehicle (1% DMSO) for 30 min followed by LPS (1 µg/ml) or PBS for 5.5 h, & cell surface biotinylation was conducted. e, f Quantification of the data in d (Surface TLR4: con, n = 11; LPS, n = 11; dasatinib+LPS, n = 11; Total TLR4: con, n = 16; LPS, n = 16; dasatinib+LPS, n = 16). One-way ANOVA with Tukey's post hoc test was used to analyze significant differences. **p < 0.01, ***p < 0.001 Image collected & cropped by CiteAb from the following publication (<https://pubmed.ncbi.nlm.nih.gov/31655606>), licensed under a CC-BY license. Not internally tested by Novus Biologicals.



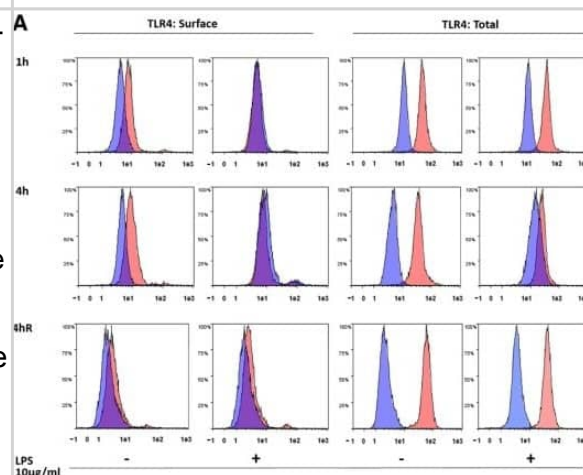
Western Blot: TLR4 Antibody (76B357.1) - BSA Free [NB100-56566] - (a1) Q-PCR assay of TLR4 mRNA expression levels after transfecting JN3 cell line with TLR4 RNAi oligonucleotides or a non-targeting pool (siCtrl) for 48 h. (a2) Representative immunoblotting analyses of protein samples probed with an antibody against TLR4 after TLR4 RNAi for 48 h. (b1) % cell viability & (b2) % proliferation of JN3 cells after TLR4 RNAi for 48 h. (c,d1) Q-PCR expression analyses of TLR4 mRNA expression levels after transfecting H929 (c) & U266 (d1) cell lines with the pCMV6-TLR4 construct or a pCMV6 empty vector for 48 h. (d2) Immunoblotting analyses of U266 cells transfected with pCMV6-TLR4 or pCMV6 vector for 48 h; protein samples were probed with an antibody against TLR4. (e1) % cell viability & (e2) % proliferation of H929 & U266 cells after transfection with the pCMV6-TLR4 construct or with the empty pCMV6 vector for 48 h. β -ACTIN probing & β -ACTIN mRNA expression were used as reference for total protein & mRNA input, respectively. Cells transfected with the pCMV6-TLR4 construct are labelled as TLR4 OE (TLR4 overexpression), whereas cells transfected with the pCMV6 empty vector are labelled as Con (control). Image collected & cropped by CiteAb from the following publication (<https://pubmed.ncbi.nlm.nih.gov/30824741>), licensed under a CC-BY license. Not internally tested by Novus Biologicals.



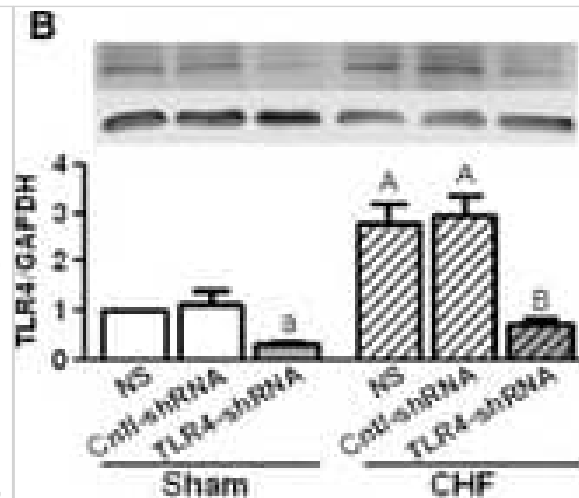
Western Blot: TLR4 Antibody (76B357.1) - BSA Free [NB100-56566] - TLR4 expression in pVW-MSCs cultured with or without LPS (10 $\mu\text{g/ml}$) for 1 & 4 h & after additional 24 h of recovery after LPS removal (4hR). a: flow cytometry analysis were performed in not fixed & not permeabilized cells for TLR4 surface expression determination (TLR4: Surface) & in fixed & permeabilized cells to measure the overall TLR4 amount (TLR4: Total). Red histograms: stained cells; blue histograms: control cells. b: representative Western Blot of TLR4 & housekeeping β -tubulin & relative quantification were presented. c: representative images of TLR4 immunostaining of pVW-MSCs cultured with or without LPS (10 $\mu\text{g/ml}$) for 4 h. pVW-MSCs nuclei were stained with Hoechst 33258 (blue). Scale bar = 10 μm . Data shown represent the mean \pm SD of three biological replicates, each experiment is repeated three times. Data were analysed using one-way ANOVA followed by the Tukey's post hoc comparison test. Different letters above the bars indicate significant differences ($p < 0.05$). (AU = Arbitrary Units) Image collected & cropped by CiteAb from the following publication (<https://pubmed.ncbi.nlm.nih.gov/31029157>), licensed under a CC-BY license. Not internally tested by Novus Biologicals.



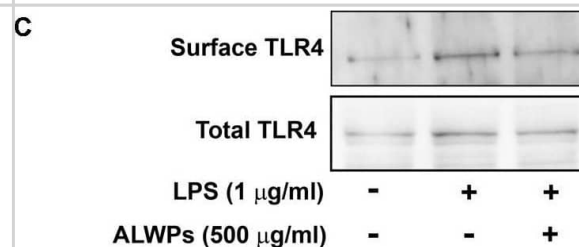
Flow Cytometry: TLR4 Antibody (76B357.1) - BSA Free [NB100-56566] - TLR4 expression in pVW-MSCs cultured with or without LPS (10 $\mu\text{g/ml}$) for 1 & 4 h & after additional 24 h of recovery after LPS removal (4hR). a: flow cytometry analysis were performed in not fixed & not permeabilized cells for TLR4 surface expression determination (TLR4: Surface) & in fixed & permeabilized cells to measure the overall TLR4 amount (TLR4: Total). Red histograms: stained cells; blue histograms: control cells. b: representative Western Blot of TLR4 & housekeeping β -tubulin & relative quantification were presented. c: representative images of TLR4 immunostaining of pVW-MSCs cultured with or without LPS (10 $\mu\text{g/ml}$) for 4 h. pVW-MSCs nuclei were stained with Hoechst 33258 (blue). Scale bar = 10 μm . Data shown represent the mean \pm SD of three biological replicates, each experiment is repeated three times. Data were analysed using one-way ANOVA followed by the Tukey's post hoc comparison test. Different letters above the bars indicate significant differences ($p < 0.05$). (AU = Arbitrary Units) Image collected & cropped by CiteAb from the following publication (<https://pubmed.ncbi.nlm.nih.gov/31029157>), licensed under a CC-BY license. Not internally tested by Novus Biologicals.



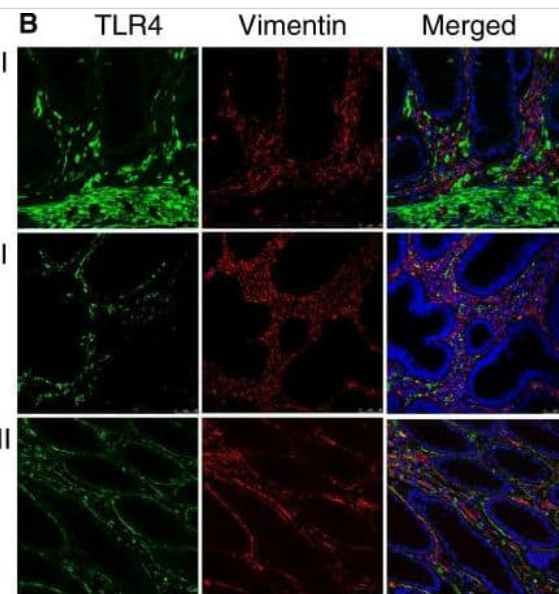
Western Blot: TLR4 Antibody (76B357.1) - BSA Free [NB100-56566] - Toll-like receptor 4 (TLR4) shRNA lentivirus reduced myocardial inflammation & improved heart function after myocardial infarction (MI). The rats received intra-myocardial injection of normal saline (NS), control shRNA lentivirus or TLR4 shRNA lentivirus (1×10^9 TU/ml, 100 μ l/heart) just after left anterior descending coronary artery (LAD) ligation or sham operation. All examinations were performed after 4 weeks of MI. (A) Expression of green fluorescent protein (GFP; green), the marker gene carried by TLR4 shRNA lentivirus, in the myocardium. The nuclei were counter-stained with Hoechst 33258 (blue). (B) Representative Western blot images & quantification of TLR4 proteins in sham & chronic heart failure (CHF) myocardium. (C) tumour necrosis factor (TNF) α & interleukin (IL) 6 protein contents in infarct & remote myocardium. (D) Representative images of Masson's trichrome staining (upper panel) & quantification (lower panel) of post-infarct failing hearts, showing that TLR4 shRNA lentivirus reduced cardiac fibrosis. Cross-sections were cut at the midhorizontal plane of the fixed paraffin-embedded heart, & stained with Masson's trichrome reagents. (E) Infarct size of post-infarct failing hearts. (F) Fractional shortening (%) of the left ventricle (data are means \pm SD, $n = 4$ /group, $aP < 0.05$, $AP < 0.01$ versus respective sham-NS; $BP < 0.01$ versus respective CHF-NS). Image collected & cropped by CiteAb from the following publication (<https://pubmed.ncbi.nlm.nih.gov/26290459>), licensed under a CC-BY license. Not internally tested by Novus Biologicals.



Western Blot: TLR4 Antibody (76B357.1) - BSA Free [NB100-56566] - ALWPs significantly reduced LPS-induced cell-surface levels of TLR4. (A) BV2 microglial cells were pretreated with TAK-242 (a TLR4 inhibitor, 500 nM) for 30 min, followed by treatment with ALWPs (500 μ g/ml) or PBS for 30 min & finally LPS (1 μ g/ml) or PBS for 5 h. Total RNA was isolated, & IL-1 β mRNA levels were measured by RT-PCR. (B) Quantification of the data from (A) (con, $n = 20$; LPS, $n = 20$; ALWPs + LPS, $n = 20$; TAK-242 + LPS, $n = 20$; TAK-242 + ALWPs + LPS, $n = 20$). (C) BV2 microglial cells were pretreated with ALWPs (500 μ g/ml) or PBS for 30 min, followed by treatment with LPS (1 μ g/ml) or PBS for 5.5 h. Cell-surface biotinylation was then conducted with a TLR4 antibody recognizing the N-terminal region of TLR4. (D) Quantification of the data from (C) (Surface TLR4: con, $n = 10$; LPS, $n = 10$; ALWPs + LPS, $n = 10$; Total TLR4: con, $n = 4$; LPS, $n = 4$; ALWPs + LPS, $n = 4$). $\square p < 0.05$, $\square\square p < 0.01$, $\square\square\square p < 0.001$. Image collected & cropped by CiteAb from the following publication (<https://pubmed.ncbi.nlm.nih.gov/30319390>), licensed under a CC-BY license. Not internally tested by Novus Biologicals.



Immunocytochemistry/ Immunofluorescence: TLR4 Antibody (76B357.1) - BSA Free [NB100-56566] - Pericyptal Myofibroblasts are Responsible for Increased TLR4 Expression in a Subset of CRCs. A) CRCs were separated into two groups representing low- & high- stromal expression of TLR4 by IHC staining. In normal tissue, stromal TLR4 expression is mainly due to macrophages (Green: TLR4, Red: CD68, Merge: TLR4 + CD68 + DAPI (blue)). Conversely, in CRCs increased vimentin & decreased CD68 staining in the pericyptal space confirm that this signal was due to pericyptal myofibroblasts & not related to tumor-associated macrophages. B) Double-stained immunofluorescence for TLR4 (green) & vimentin (red) in normal (I), adenoma (II), & colon adenocarcinoma (III) (10 \times). In the stromal compartment of CRCs, immunofluorescent staining for TLR4 localized to the pericyptal myofibroblasts in a subset of samples. C) IHC staining of colon adenocarcinoma for TLR4, vimentin, & α -SMA (40 \times). Staining co-localizes to the pericyptal space, confirming the signal arises from pericyptal myofibroblasts. D, E, & F) An increase in IHC staining for α -SMA & vimentin was noted in CRCs when compared to normal or low grade dysplasia. A decrease in staining for CD68 positive macrophages was observed with higher degrees of dysplasia. Image collected & cropped by CiteAb from the following publication (<https://jeccr.biomedcentral.com/articles/10.1186/1756-9966-33-45>), licensed under a CC-BY license. Not internally tested by Novus Biologicals.



Publications

Ding K, Xie R, Han B et al. Histone methyltransferase SMYD2 regulates the activation of hepatic stellate cells by activating TLR4 signaling. *Scientific Reports* 2025-04-16 [PMID: 40240419]

Ikemoto M, Kotani T, Okada K et al. A hybrid protein is a functional molecule to reduce the cytokine storm caused by excessively activated macrophages. *Immunology and Cell Biology* 2025-05-07 [PMID: 39953927]

Yang C, Yue Y, Wang Y et al. Dulaglutide markedly prevents peritoneal fibrosis in a rodent model of chronic kidney disease: Insights into the pathogenesis. *International Journal of Molecular Medicine* 2025-07-25 [PMID: 40709382]

Niu F, Liao K, Hu G et al. HIV Tat-Mediated Induction of Monocyte Transmigration Across the Blood-Brain Barrier: Role of Chemokine Receptor CXCR3 *Frontiers in Cell and Developmental Biology* 2021-08-30 [PMID: 34527676] (Western Blot)

Prigent A, Gonzales J, Durand T et al. Acute inflammation down-regulates alpha-synuclein expression in enteric neurons *Journal of Neurochemistry* 2019-03-01 [PMID: 30589944] (Western Blot)

Zhang C, Wang X, Wang C et al. Qingwenzhike Prescription Alleviates Acute Lung Injury Induced by LPS via Inhibiting TLR4/NF- κ B Pathway and NLRP3 Inflammasome Activation *Frontiers in Pharmacology* 2021-12-23 [PMID: 35002723] (Western Blot)

Chivero ET, Liao K, Niu F et al. Engineered Extracellular Vesicles Loaded With miR-124 Attenuate Cocaine-Mediated Activation of Microglia *Frontiers in Cell and Developmental Biology* 2020-07-30 [PMID: 32850781] (Western Blot)

Z Shi, Y Mori-Akiya, W Du, R Fultz, Y Zhao, W Ruan, S Venable, MA Engevik, J Versalovic Loss of H2R signaling disrupts neutrophil homeostasis and promotes inflammation-associated colonic tumorigenesis in mice *Cellular and Molecular Gastroenterology and Hepatology*, 2021-11-13;0(0):. 2021-11-13 [PMID: 34781022] (Western Blot)

Zhou M, Pang F, Liao D et al. Electroacupuncture at Fengchi(GB20) and Yanglingquan(GB34) Ameliorates Paralgnesia through Microglia-Mediated Neuroinflammation in a Rat Model of Migraine *Brain Sciences* 2023-03-24 [PMID: 37190506] (Western Blot)

Markarian M, Krattli RP Jr, Baddour JD et al. Glia-Selective Deletion of Complement C1q Prevents Radiation-Induced Cognitive Deficits and Neuroinflammation *Cancer Research* 2021-04-01 [PMID: 33323383] (Western Blot)

Lu B, Xing L, Zhu XY, Tang H et Al. Tumor necrosis factor-stimulated gene-6 inhibits endoplasmic reticulum stress in the ischemic mouse kidney *iScience* 2024-12-24 [PMID: 39717095]

Beloosesky R, Gutzeit O, Ginsberg Y et Al. Intestine and brain TLR-4 modulation following N-acetyl-cysteine treatment in NEC rodent model *Sci Rep* 2023-05-22 [PMID: 37217588]

More publications at <http://www.novusbio.com/NB100-56566>

Procedures

Western Blot protocol for TLR4 Antibody (NB100-56566)

Western Blot Protocol

1. Perform SDS-PAGE on samples to be analyzed, loading 10-25 ug of total protein per lane.
2. Transfer proteins to PVDF membrane according to the instructions provided by the manufacturer of the membrane and transfer apparatus.
3. Stain the membrane with Ponceau S (or similar product) to assess transfer success, and mark molecular weight standards where appropriate.
4. Rinse the blot TBS -0.05% Tween 20 (TBST).
5. Block the membrane in 5% Non-fat milk in TBST (blocking buffer) for at least 1 hour.
6. Wash the membrane in TBST three times for 10 minutes each.
7. Dilute anti-TLR4 primary antibody in blocking buffer and incubate overnight at 4C with gentle rocking.
8. Wash the membrane in TBST three times for 10 minutes each.
9. Incubate the membrane in diluted HRP conjugated secondary antibody in blocking buffer (as per manufacturer's instructions) for 1 hour at room temperature.
10. Wash the blot in TBST three times for 10 minutes each (this step can be repeated as required to reduce background).
11. Apply the detection reagent of choice in accordance with the manufacturers instructions.



Flow (Intracellular) protocol for TLR4 Antibody (NB100-56566)

Protocol for Flow Cytometry Intracellular Staining

Sample Preparation.

1. Grow cells to 60-85% confluency. Flow cytometry requires between 2×10^5 and 1×10^6 cells for optimal performance.
2. If cells are adherent, harvest gently by washing once with staining buffer and then scraping. Avoid using trypsin as this can disrupt certain epitopes of interest. If enzymatic harvest is required, use Accutase, Collagenase, or TrypLE Express for a less damaging option.
3. Reserve 100 μ L for counting, then transfer cell volume into a 50 mL conical tube and centrifuge for 8 minutes at 400 RCF.
 - a. Count cells using a hemocytometer and a 1:1 trypan blue exclusion stain to determine cell viability before starting the flow protocol. If cells appear blue, do not proceed.
4. Re-suspend cells to a concentration of 1×10^6 cells/mL in staining buffer (NBP2-26247).
5. Aliquot out 100 μ L samples in accordance with your experimental samples.

Tip: When cell surface and intracellular staining are required in the same sample, it is advisable that the cell surface staining be performed first since the fixation and permeabilization steps might reduce the availability of surface antigens.

Intracellular Staining.

Tip: When performing intracellular staining, it is important to use appropriate fixation and permeabilization reagents based upon the target and its subcellular location. Generally, our Intracellular Flow Assay Kit (NBP2-29450) is a good place to start as it contains an optimized combination of reagents for intracellular staining as well as an inhibitor of intracellular protein transport (necessary if staining secreted proteins). Certain targets may require more gentle or transient permeabilization protocols such as the commonly employed methanol or saponin-based methods.

Protocol for Cytoplasmic Targets:

1. Fix the cells by adding 100 μ L fixation solution (such as 4% PFA) to each sample for 10-15 minutes.
2. Permeabilize cells by adding 100 μ L of a permeabilization buffer to every 1×10^6 cells present in the sample. Mix well and incubate at room temperature for 15 minutes.
 - a. For cytoplasmic targets, use a gentle permeabilization solution such as 1X PBS + 0.5% Saponin or 1X PBS + 0.5% Tween-20.
 - b. To maintain the permeabilized state throughout your experiment, use staining buffer + 0.1% of the permeabilization reagent (i.e. 0.1% Tween-20 or 0.1% Saponin).
3. Following the 15 minute incubation, add 2 mL of the staining buffer + 0.1% permeabilizer to each sample.
4. Centrifuge for 1 minute at 400 RCF.
5. Discard supernatant and re-suspend in 100 μ L of staining buffer + 0.1% permeabilizer.
6. Add appropriate amount of each antibody (eg. 1 test or 1 μ g per sample, as experimentally determined).
7. Mix well and incubate at room temperature for 30 minutes- 1 hour. Gently mix samples every 10-15 minutes.
8. Following the primary/conjugate incubation, add 1-2 mL/sample of staining buffer +0.1% permeabilizer and centrifuge for 1 minute at 400 RCF.
9. Wash twice by re-suspending cells in staining buffer (2 mL for tubes or 200 μ L for wells) and centrifuging at 400 RCF for 5 minutes. Discard supernatant.
10. Add appropriate amount of secondary antibody (as experimentally determined) to each sample.
11. Incubate at room temperature in dark for 20 minutes.
12. Add 1-2 mL of staining buffer and centrifuge at 400 RCF for 1 minute and discard supernatant.
13. Wash twice by re-suspending cells in staining buffer (2 mL for tubes or 200 μ L for wells) and centrifuging at 400 RCF for 5 minutes. Discard supernatant.
14. Resuspend in an appropriate volume of staining buffer (usually 500 μ L per sample) and proceed with analysis on your flow cytometer.

Immunohistochemistry-Paraffin Protocol for TLR4 Antibody (NB100-56566)

Immunohistochemistry-Paraffin Embedded Sections

Antigen Unmasking:

Bring slides to a boil in 10 mM sodium citrate buffer (pH 6.0) then maintain at a sub-boiling temperature for 10 minutes. Cool slides on bench-top for 30 minutes (keep slides in the sodium citrate buffer all the time).

Staining:

1. Wash sections in deionized water three times for 5 minutes each.
2. Wash sections in PBS for 5 minutes.
3. Block each section with 100-400 ul blocking solution (1% BSA in PBS) for 1 hour at room temperature.
4. Remove blocking solution and add 100-400 ul diluted primary antibody. Incubate overnight at 4 C.
5. Remove antibody solution and wash sections in wash buffer three times for 5 minutes each.
6. Add 100-400 ul HRP polymer conjugated secondary antibody. Incubate 30 minutes at room temperature.
7. Wash sections three times in wash buffer for 5 minutes each.
8. Add 100-400 ul DAB substrate to each section and monitor staining closely.
9. As soon as the sections develop, immerse slides in deionized water.
10. Counterstain sections in hematoxylin.
11. Wash sections in deionized water two times for 5 minutes each.
12. Dehydrate sections.
13. Mount coverslips.

Immunocytochemistry/Immunofluorescence Protocol for TLR4 Antibody (NB100-56566)

Immunocytochemistry Protocol

Culture cells to appropriate density in 35 mm culture dishes or 6-well plates.

1. Remove culture medium and wash the cells briefly in PBS. Add 10% formalin to the dish and fix at room temperature for 10 minutes.
2. Remove the formalin and wash the cells in PBS.
3. Permeablize the cells with 0.1% Triton X100 or other suitable detergent for 10 min.
4. Remove the permeablization buffer and wash three times for 10 minutes each in PBS. Be sure to not let the specimen dry out.
5. To block nonspecific antibody binding, incubate in 10% normal goat serum from 1 hour to overnight at room temperature.
6. Add primary antibody at appropriate dilution and incubate overnight at 4C.
7. Remove primary antibody and replace with PBS. Wash three times for 10 minutes each.
8. Add secondary antibody at appropriate dilution. Incubate for 1 hour at room temperature.
9. Remove secondary antibody and replace with PBS. Wash three times for 10 minutes each.
10. Counter stain DNA with DAPI if required.



Novus Biologicals USA

10730 E. Briarwood Avenue
Centennial, CO 80112
USA
Phone: 303.730.1950
Toll Free: 1.888.506.6887
Fax: 303.730.1966
nb-customerservice@bio-techne.com

Bio-Techne Canada

21 Canmotor Ave
Toronto, ON M8Z 4E6
Canada
Phone: 905.827.6400
Toll Free: 855.668.8722
Fax: 905.827.6402
canada.inquires@bio-techne.com

Bio-Techne Ltd

19 Barton Lane
Abingdon Science Park
Abingdon, OX14 3NB, United Kingdom
Phone: (44) (0) 1235 529449
Free Phone: 0800 37 34 15
Fax: (44) (0) 1235 533420
info.EMEA@bio-techne.com

General Contact Information

www.novusbio.com
Technical Support: nb-technical@bio-techne.com
Orders: nb-customerservice@bio-techne.com
General: novus@novusbio.com

Products Related to NB100-56566

NBP2-25295-1.0mg	LPS from E. Coli, TLR4 ligand
NBP2-26244	TLR4 Inhibitor Peptide Set
NBP2-33376H	Blue Marker Antibody (6F4-F6) [HRP]
HAF007	Goat anti-Mouse IgG Secondary Antibody [HRP]
NB7539	Goat anti-Mouse IgG (H+L) Secondary Antibody [HRP]
NBP1-43317-0.5mg	Mouse IgG2b Kappa Light Chain Isotype Control (MG2b)

Limitations

This product is for research use only and is not approved for use in humans or in clinical diagnosis. Primary Antibodies are guaranteed for 1 year from date of receipt.

For more information on our 100% guarantee, please visit www.novusbio.com/guarantee

Earn gift cards/discounts by submitting a review: www.novusbio.com/reviews/submit/NB100-56566

Earn gift cards/discounts by submitting a publication using this product:
www.novusbio.com/publications



