

Product Datasheet

D4-GDI/RhoGDI2 Antibody (10D774) - BSA Free NB100-56556

Unit Size: 0.1 mg

Store at 4C short term. Aliquot and store at -20C long term. Avoid freeze-thaw cycles.

www.novusbio.com



technical@novusbio.com

Publications: 3

Protocols, Publications, Related Products, Reviews, Research Tools and Images at:
www.novusbio.com/NB100-56556

Updated 9/9/2025 v.20.1

Earn rewards for product
reviews and publications.

Submit a publication at www.novusbio.com/publications

Submit a review at www.novusbio.com/reviews/destination/NB100-56556

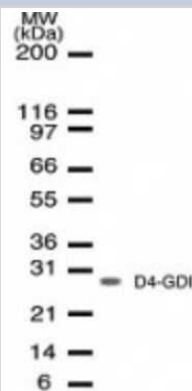


NB100-56556**D4-GDI/RhoGDI2 Antibody (10D774) - BSA Free**

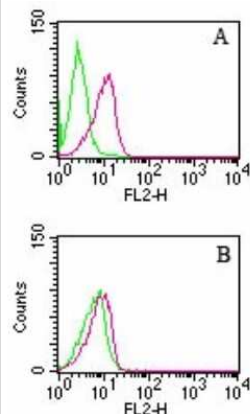
Product Information	
Unit Size	0.1 mg
Concentration	1.0 mg/ml
Storage	Store at 4C short term. Aliquot and store at -20C long term. Avoid freeze-thaw cycles.
Clonality	Monoclonal
Clone	10D774
Preservative	0.02% Sodium Azide
Isotype	IgG
Purity	Protein G purified
Buffer	PBS and 0.02% Gelatin
Product Description	
Description	Novus Biologicals Mouse D4-GDI/RhoGDI2 Antibody (10D774) - BSA Free (NB100-56556) is a monoclonal antibody validated for use in WB, Flow and ICC/IF. Anti-D4-GDI/RhoGDI2 Antibody: Cited in 3 publications. All Novus Biologicals antibodies are covered by our 100% guarantee.
Host	Mouse
Gene ID	397
Gene Symbol	ARHGDIB
Species	Human
Immunogen	A synthetic peptide corresponding to human D4-GDI/RhoGDI2 was used as the immunogen.
Product Application Details	
Applications	Western Blot, Flow Cytometry, Immunocytochemistry/ Immunofluorescence
Recommended Dilutions	Western Blot 1-2 ug/ml, Flow Cytometry, Immunocytochemistry/ Immunofluorescence reported in scientific literature (PMID 25623267)
Application Notes	A 28 kDa band is observed.

Images

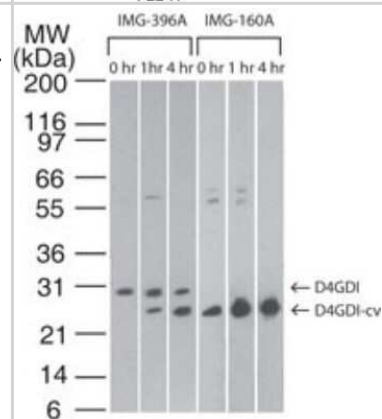
Western Blot: D4-GDI/RhoGDI2 Antibody (10D774) [NB100-56556] - Western blot analysis of NB100-56556 in whole Jurkat cell lysate.



Flow Cytometry: D4-GDI/RhoGDI2 Antibody (10D774) [NB100-56556] - HL60 cells were left untreated (green) or treated with camptothecin to induce apoptosis (red). Cells were analyzed by intracellular flow cytometry using either the NB100-56725 or NB100-56556 D4-GDI antibodies (0.5 ug antibody/test/1 million cells) and Intracellular Staining Flow Assay Kit. A: NB100-56725 which recognizes only cleaved D4-GDI. B: NB100-56556 which recognizes both full-length and cleaved D4-GDI.



Western Blot: D4-GDI/RhoGDI2 Antibody (10D774) [NB100-56556] - Analysis of D4GDI in Jurkat cells using NB100-56556 at 2 ug/ml and D4-GDI (cleavage specific) at 0.1 ug/ml. Cells were treated with 2 uM staurosporine for different time periods. NB100-56556 detects both the full-length and cleaved forms of D4GDI while D4-GDI (cleavage specific) specifically detects only the cleaved form of the protein.



Publications

Lee SH, Lee JW, Kim HS et al. Immunohistochemical analysis of Omi/HtrA2 expression in stomach cancer *APMIS* 2003-05-01 [PMID: 12887511]

Details:

This citation used the Biotin version of this antibody.

Barbati C, Alessandri C, Vomero M et al. Autoantibodies specific to D4GDI modulate Rho GTPase mediated cytoskeleton remodeling and induce autophagy in T lymphocytes *J. Autoimmun.* 2015-01-23 [PMID: 25623267] (ICC/IF, FLOW, WB, Human)

Details:

D4-GDI/RhoGDI2 /mAb anti D4GDI antibody used for ICC-IF and FLOW in experiments involving T lymphocytes from patients with Systemic Lupus Erythematosus/SLE disease. For FLOW naive subset/CD45RA+CD62L+, central memory subset/CD45RA-CD62L+, and effector memory subset/CD45RA+CD62L- and CD45RA-CD62L- cells were immunostained with D4GDI antibody, human IgG purified from sera of patients, and IVIG/intravenous immunoglobulin (negative control) - each used at 1 ug /1 x 10(6) cells concentration followed by detection via FITC-conjugated secondary antibodies and 50,000 events/sample on FACSCalibur cytometer (Fig. 2A, Fig. 3C, Supplemental Fig 1). Antibody also used for WB and FLOW on Jurkat cells that were treated or not with siRNA-D4GDI for knockdown of D4GDI protein (Fig. 5). For ICC-IF, peripheral blood T lymphocytes were fixed in 4% PFA-PBS for 30 minutes at 4C, blocked in 2% BSA-PBS-5% glycerol-0.2% Tween 20 for 1 hour at 4C, incubated with primary antibody at 0.1 ug/uL in PBS-1% BSA for 1 hour at 4C followed by FITC conjugated secondary for 30 minutes at 4C and analysis using Olympus U RFL microscope (Fig. 2B, 3D).

Brown MG, Huang YY, Marshall JS et al. Dramatic caspase-dependent apoptosis in antibody-enhanced dengue virus infection of human mast cells. *J Leukoc Biol.* 2009-01-01 [PMID: 18809735] (WB, Human)

Details:

WB (human KU812 cells), Fig. 8.





Novus Biologicals USA

10730 E. Briarwood Avenue
Centennial, CO 80112
USA
Phone: 303.730.1950
Toll Free: 1.888.506.6887
Fax: 303.730.1966
nb-customerservice@bio-techne.com

Bio-Techne Canada

21 Canmotor Ave
Toronto, ON M8Z 4E6
Canada
Phone: 905.827.6400
Toll Free: 855.668.8722
Fax: 905.827.6402
canada.inquires@bio-techne.com

Bio-Techne Ltd

19 Barton Lane
Abingdon Science Park
Abingdon, OX14 3NB, United Kingdom
Phone: (44) (0) 1235 529449
Free Phone: 0800 37 34 15
Fax: (44) (0) 1235 533420
info.EMEA@bio-techne.com

General Contact Information

www.novusbio.com
Technical Support: nb-technical@bio-techne.com
Orders: nb-customerservice@bio-techne.com
General: novus@novusbio.com

Products Related to NB100-56556

NBL1-07674	D4-GDI/RhoGDI2 Overexpression Lysate
NBP2-33376H	Blue Marker Antibody (6F4-F6) [HRP]
HAF007	Goat anti-Mouse IgG Secondary Antibody [HRP]
NB7539	Goat anti-Mouse IgG (H+L) Secondary Antibody [HRP]
NBP1-97019-5mg	Mouse IgG Isotype Control

Limitations

This product is for research use only and is not approved for use in humans or in clinical diagnosis. Primary Antibodies are guaranteed for 1 year from date of receipt.

For more information on our 100% guarantee, please visit www.novusbio.com/guarantee

Earn gift cards/discounts by submitting a review: www.novusbio.com/reviews/submit/NB100-56556

Earn gift cards/discounts by submitting a publication using this product:
www.novusbio.com/publications

