

Product Datasheet

Cytochrome c Antibody (7H8.2C12) [Alexa Fluor® 488] NB100-56503AF488

Unit Size: 0.1 ml

Store at 4C in the dark.

www.novusbio.com



technical@novusbio.com

Protocols, Publications, Related Products, Reviews, Research Tools and Images at:
www.novusbio.com/NB100-56503AF488

Updated 10/23/2024 v.20.1

Earn rewards for product
reviews and publications.

Submit a publication at www.novusbio.com/publications

Submit a review at www.novusbio.com/reviews/destination/NB100-56503AF488



NB100-56503AF488

Cytochrome c Antibody (7H8.2C12) [Alexa Fluor® 488]

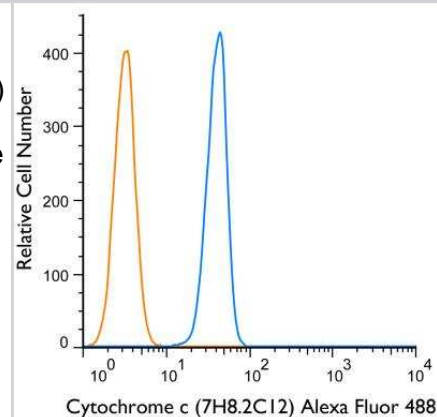
Product Information	
Unit Size	0.1 ml
Concentration	Please see the vial label for concentration. If unlisted please contact technical services.
Storage	Store at 4C in the dark.
Clonality	Monoclonal
Clone	7H8.2C12
Preservative	0.05% Sodium Azide
Isotype	IgG2b Kappa
Conjugate	Alexa Fluor 488
Purity	Protein G purified
Buffer	50mM Sodium Borate
Product Description	
Host	Mouse
Gene ID	54205
Gene Symbol	CYCS
Species	Human, Mouse, Rat, Drosophila, Rabbit
Marker	Mitochondria Marker
Specificity/Sensitivity	This antibody recognizes total cytochrome C which includes both apocytochrome (i.e. cytochrome in the cytosol without heme attached) and holocytochrome (i.e. cytochrome in the mitochondria with heme attached).
Immunogen	Synthetic peptides corresponding to amino acids 1-80, 81-104 and 66-104 of pigeon CYT were used as the immunogen (Jemmerson et al. 1991). The antibody recognizes an epitope within amino acids 93-104 of pigeon cytochrome C based on competitive ELISA results (Jemmerson et al. 1991).
Notes	Alexa Fluor (R) products are provided under an intellectual property license from Life Technologies Corporation. The purchase of this product conveys to the buyer the non-transferable right to use the purchased product and components of the product only in research conducted by the buyer (whether the buyer is an academic or for-profit entity). The sale of this product is expressly conditioned on the buyer not using the product or its components, or any materials made using the product or its components, in any activity to generate revenue, which may include, but is not limited to use of the product or its components: (i) in manufacturing; (ii) to provide a service, information, or data in return for payment; (iii) for therapeutic, diagnostic or prophylactic purposes; or (iv) for resale, regardless of whether they are resold for use in research. For information on purchasing a license to this product for purposes other than as described above, contact Life Technologies Corporation, 5791 Van Allen Way, Carlsbad, CA 92008 USA or outlicensing@lifetech.com . This conjugate is made on demand. Actual recovery may vary from the stated volume of this product. The volume will be greater than or equal to the unit size stated on the datasheet.
Product Application Details	



Applications	Western Blot, Flow Cytometry, Flow (Cell Surface), Flow (Intracellular), Immunoblotting, Immunocytochemistry/ Immunofluorescence, Immunohistochemistry, Immunohistochemistry-Paraffin
Recommended Dilutions	Western Blot, Flow Cytometry, Immunohistochemistry, Immunocytochemistry/ Immunofluorescence, Immunohistochemistry-Paraffin, Immunoblotting, Flow (Cell Surface), Flow (Intracellular)
Application Notes	Optimal dilution of this antibody should be experimentally determined.

Images

Flow Cytometry: Cytochrome c Antibody (7H8.2C12) [Alexa Fluor 488] [NB100-56503AF488] - An intracellular stain was performed on HeLa cells with Cytochrome c (7H8.2C12) antibody NB100-56503AF488 (blue) and a matched isotype control NBP2-27231AF488 (orange). Cells were fixed with 4% PFA and then permeabilized with 0.1% saponin. Cells were incubated in an antibody dilution of 10 ug/mL for 30 minutes at room temperature. Both antibodies were conjugated to Alexa Fluor 488.





Novus Biologicals USA

10730 E. Briarwood Avenue
Centennial, CO 80112
USA
Phone: 303.730.1950
Toll Free: 1.888.506.6887
Fax: 303.730.1966
nb-customerservice@bio-techne.com

Bio-Techne Canada

21 Canmotor Ave
Toronto, ON M8Z 4E6
Canada
Phone: 905.827.6400
Toll Free: 855.668.8722
Fax: 905.827.6402
canada.inquires@bio-techne.com

Bio-Techne Ltd

19 Barton Lane
Abingdon Science Park
Abingdon, OX14 3NB, United Kingdom
Phone: (44) (0) 1235 529449
Free Phone: 0800 37 34 15
Fax: (44) (0) 1235 533420
info.EMEA@bio-techne.com

General Contact Information

www.novusbio.com
Technical Support: nb-technical@bio-techne.com
Orders: nb-customerservice@bio-techne.com
General: novus@novusbio.com

Products Related to NB100-56503AF488

NBP1-43317AF488	Mouse IgG2b Kappa Light Chain Isotype Control (MG2b) [Alexa Fluor® 488]
NB100-56503AF647	Cytochrome c Antibody (7H8.2C12) [Alexa Fluor® 647]
210-TA-005	TNF-alpha [Unconjugated]
MCTC0	Cytochrome c [HRP]

Limitations

This product is for research use only and is not approved for use in humans or in clinical diagnosis. Primary Antibodies are guaranteed for 1 year from date of receipt.

For more information on our 100% guarantee, please visit www.novusbio.com/guarantee

Earn gift cards/discounts by submitting a review: www.novusbio.com/reviews/submit/NB100-56503AF488

Earn gift cards/discounts by submitting a publication using this product:
www.novusbio.com/publications

