

Product Datasheet

CRHR2/CRF2 Antibody - BSA Free NB100-56485

Unit Size: 0.1 mg

Store at 4C short term. Aliquot and store at -20C long term. Avoid freeze-thaw cycles.

www.novusbio.com



technical@novusbio.com

Reviews: 1 Publications: 5

Protocols, Publications, Related Products, Reviews, Research Tools and Images at:
www.novusbio.com/NB100-56485

Updated 9/9/2025 v.20.1

**Earn rewards for product
reviews and publications.**

Submit a publication at www.novusbio.com/publications

Submit a review at www.novusbio.com/reviews/destination/NB100-56485



NB100-56485

CRHR2/CRF2 Antibody - BSA Free

Product Information	
Unit Size	0.1 mg
Concentration	1.0 mg/ml
Storage	Store at 4C short term. Aliquot and store at -20C long term. Avoid freeze-thaw cycles.
Clonality	Polyclonal
Preservative	0.05% Sodium Azide
Isotype	IgG
Purity	Protein G purified
Buffer	PBS

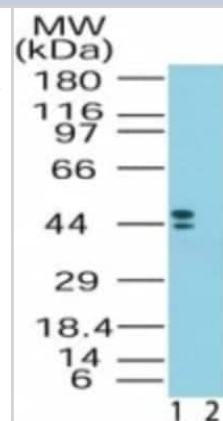
Product Description	
Description	Novus Biologicals Rabbit CRHR2/CRF2 Antibody - BSA Free (NB100-56485) is a polyclonal antibody validated for use in WB, ICC/IF and Simple Western. Anti-CRHR2/CRF2 Antibody: Cited in 5 publications. All Novus Biologicals antibodies are covered by our 100% guarantee.
Host	Rabbit
Gene ID	1395
Gene Symbol	CRHR2
Species	Human, Mouse, Rat, Bovine, Canine, Chicken, Mammal
Reactivity Notes	Mammal reactivity reported in scientific literature (PMID:33344730) 94% sequence identity with Rhesus monkey
Specificity/Sensitivity	There are three isoforms of CRHR2 in human: alpha is 411 amino acids, beta is 438 amino acids, and gamma is 397 amino acids.
Immunogen	A portion of amino acids 75-125 of human CRHR2 was used as the immunogen.

Product Application Details	
Applications	Western Blot, Simple Western, Immunocytochemistry/ Immunofluorescence
Recommended Dilutions	Western Blot 0.5-2 ug/ml, Simple Western 1:200, Immunocytochemistry/ Immunofluorescence
Application Notes	See Simple Western Antibody Database for Simple Western validation: Tested in Human Brain lysate 0.5 mg/mL, separated by Size, antibody dilution of 1:50, apparent MW was 49 kDa

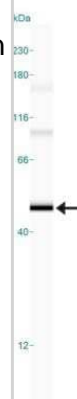


Images

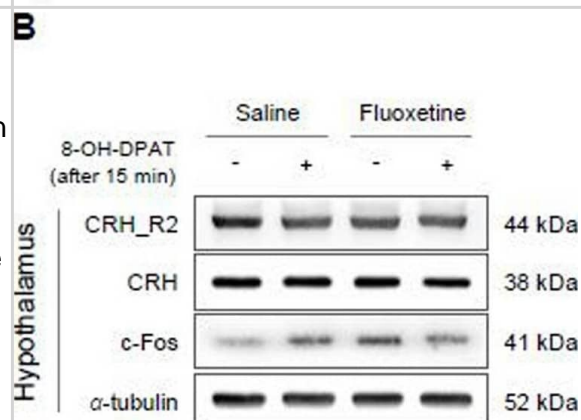
Western Blot: CRHR2/CRF2 Antibody [NB100-56485] - Analysis of CRHR2 in human brain lysate in the 1) absence and 2) presence of immunizing peptide using this antibody. Both of the isoforms detected by this antibody.



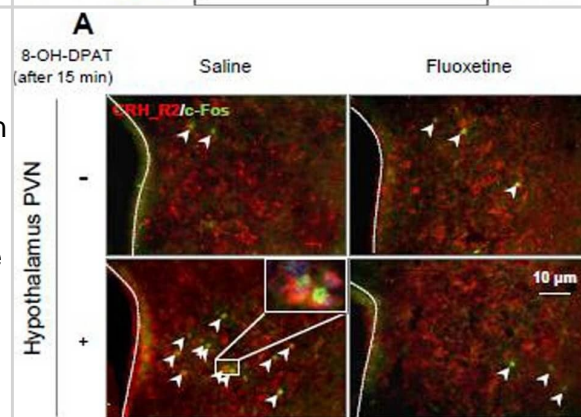
Simple Western: CRHR2/CRF2 Antibody [NB100-56485] - Shows a specific band for Corticotropin Releasing Factor 2 in 0.5 mg/ml of Human Brain lysate. This experiment was performed under reducing conditions using the 12-230 kDa separation system.



Hypothalamic neuronal activity under 5-HT1A receptor agonist treatment. After fluoxetine injection for 4 weeks, hypothalamic CRH neuronal activity (CRH, CRH_R2 and c-Fos) before and after challenge with 8-OH-DPAT was evaluated by immunofluorescent staining (A) and western blotting (B) analysis. In the hypothalamic plasma membrane, the protein expression levels of the 5-HT1A receptors, GIRK1 and GIRK2 were measured (C). The protein expression levels of BDNF, phosphorylated ERK1/2 and CREB in whole hypothalamic lysate were analyzed (D). The data are expressed as the mean \pm SD ($n = 4$ /group) Image collected and cropped by CiteAb from the following open publication (<https://pubmed.ncbi.nlm.nih.gov/38191373>), licensed under a CC-BY license. Not internally tested by Novus Biologicals.



Hypothalamic neuronal activity under 5-HT1A receptor agonist treatment. After fluoxetine injection for 4 weeks, hypothalamic CRH neuronal activity (CRH, CRH_R2 and c-Fos) before and after challenge with 8-OH-DPAT was evaluated by immunofluorescent staining (A) and western blotting (B) analysis. In the hypothalamic plasma membrane, the protein expression levels of the 5-HT1A receptors, GIRK1 and GIRK2 were measured (C). The protein expression levels of BDNF, phosphorylated ERK1/2 and CREB in whole hypothalamic lysate were analyzed (D). The data are expressed as the mean \pm SD ($n = 4$ /group) Image collected and cropped by CiteAb from the following open publication (<https://pubmed.ncbi.nlm.nih.gov/38191373>), licensed under a CC-BY license. Not internally tested by Novus Biologicals.



Publications

Lee, JS;Kang, JY;Park, SY;Hwang, SJ;Bae, SJ;Son, CG; Central 5-HTergic hyperactivity induces myalgic encephalomyelitis/chronic fatigue syndrome (ME/CFS)-like pathophysiology Journal of translational medicine 2024-01-08 [PMID: 38191373]

M D, Cs M, Gn P et al. Social isolation alters behavior, the gut-immune-brain axis, and neurochemical circuits in male and female prairie voles Neurobiology of Stress 2020-11-01 [PMID: 33344730] (WB, Mammal)

Details:

Prairie vole brain proteins were analyzed by Western blot analysis.

D'Costa S, Ayyadurai S, Gibson AJ et al. Mast Cell CRF2 Suppresses Mast Cell Degranulation and Limits the Severity of Anaphylaxis and Stress-Induced Intestinal Permeability. J. Allergy Clin. Immunol. 2018-11-12 [PMID: 30439403] (ICC/IF, Mouse)

Roh J, Shin SJ, Lee AN et al. RGS1 expression is associated with poor prognosis in multiple myeloma. J Clin Pathol 2016-07-21 [PMID: 27445341] (WB, Mouse)

Huang M, Kempuraj D, Papadopoulou N et al. Urocortin induces interleukin-6 release from rat cardiomyocytes through p38 MAP kinase, ERK and NF-kappaB activation. J Mol Endocrinol. 2009-05-01 [PMID: 19211730] (WB, Rat)

Details:

WB (rat cardiomyocytes, cortex and cerebellum), Fig. 2c.





Novus Biologicals USA

10730 E. Briarwood Avenue
Centennial, CO 80112
USA
Phone: 303.730.1950
Toll Free: 1.888.506.6887
Fax: 303.730.1966
nb-customerservice@bio-techne.com

Bio-Techne Canada

21 Canmotor Ave
Toronto, ON M8Z 4E6
Canada
Phone: 905.827.6400
Toll Free: 855.668.8722
Fax: 905.827.6402
canada.inquires@bio-techne.com

Bio-Techne Ltd

19 Barton Lane
Abingdon Science Park
Abingdon, OX14 3NB, United Kingdom
Phone: (44) (0) 1235 529449
Free Phone: 0800 37 34 15
Fax: (44) (0) 1235 533420
info.EMEA@bio-techne.com

General Contact Information

www.novusbio.com
Technical Support: nb-technical@bio-techne.com
Orders: nb-customerservice@bio-techne.com
General: novus@novusbio.com

Products Related to NB100-56485

NB820-59177	Human Brain Whole Tissue Lysate (Adult Whole Normal)
NBP2-33376H	Blue Marker Antibody (6F4-F6) [HRP]
HAF008	Goat anti-Rabbit IgG Secondary Antibody [HRP]
NB7160	Goat anti-Rabbit IgG (H+L) Secondary Antibody [HRP]
NBP2-24891	Rabbit IgG Isotype Control

Limitations

This product is for research use only and is not approved for use in humans or in clinical diagnosis. Primary Antibodies are guaranteed for 1 year from date of receipt.

For more information on our 100% guarantee, please visit www.novusbio.com/guarantee

Earn gift cards/discounts by submitting a review: www.novusbio.com/reviews/submit/NB100-56485

Earn gift cards/discounts by submitting a publication using this product:
www.novusbio.com/publications

