

# Product Datasheet

## Sin1/MAPKAP1 Antibody - BSA Free NB100-56482

Unit Size: 0.1 mg

Store at 4C short term. Aliquot and store at -20C long term. Avoid freeze-thaw cycles.

[www.novusbio.com](http://www.novusbio.com)



[technical@novusbio.com](mailto:technical@novusbio.com)

Protocols, Publications, Related Products, Reviews, Research Tools and Images at:  
[www.novusbio.com/NB100-56482](http://www.novusbio.com/NB100-56482)

Updated 9/9/2025 v.20.1

Earn rewards for product  
reviews and publications.

Submit a publication at [www.novusbio.com/publications](http://www.novusbio.com/publications)

Submit a review at [www.novusbio.com/reviews/destination/NB100-56482](http://www.novusbio.com/reviews/destination/NB100-56482)



**NB100-56482**

Sin1/MAPKAP1 Antibody - BSA Free

**Product Information**

<b>Unit Size</b>	0.1 mg
<b>Concentration</b>	0.5 mg/ml
<b>Storage</b>	Store at 4C short term. Aliquot and store at -20C long term. Avoid freeze-thaw cycles.
<b>Clonality</b>	Polyclonal
<b>Preservative</b>	0.05% Sodium Azide
<b>Isotype</b>	IgG
<b>Purity</b>	Protein G purified
<b>Buffer</b>	PBS containing 0.2% gelatin

**Product Description**

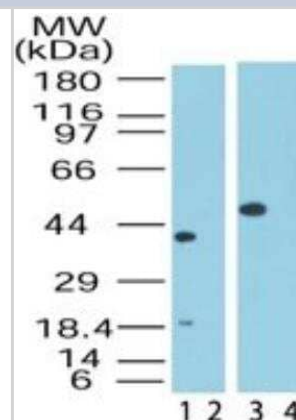
<b>Description</b>	Novus Biologicals Rabbit Sin1/MAPKAP1 Antibody - BSA Free (NB100-56482) is a polyclonal antibody validated for use in WB. All Novus Biologicals antibodies are covered by our 100% guarantee.
<b>Host</b>	Rabbit
<b>Gene ID</b>	79109
<b>Gene Symbol</b>	MAPKAP1
<b>Species</b>	Human, Mouse, Rat, Avian, Bovine, Canine, Chicken, Zebrafish
<b>Specificity/Sensitivity</b>	There are multiple isoforms of this protein, ranging from approximately 310 amino acids to approximately 522 amino acids. Isoform distribution varies with tissue type.
<b>Immunogen</b>	A portion of amino acids 85-102 (NTAQRLELRKERQNQIK) of human Mip1 was used as the immunogen.

**Product Application Details**

<b>Applications</b>	Western Blot
<b>Recommended Dilutions</b>	Western Blot 0.5-2 ug/ml

**Images**

Western Blot: Sin1/MAPKAP1 Antibody [NB100-56482] - Analysis of Mip1 in human heart lysate in the 1) absence and 2) presence of immunizing peptide and in human skeletal muscle lysate in the 3) absence and 4) presence of immunizing peptide using this antibody. 5 ug/ml.





### **Novus Biologicals USA**

10730 E. Briarwood Avenue  
Centennial, CO 80112  
USA  
Phone: 303.730.1950  
Toll Free: 1.888.506.6887  
Fax: 303.730.1966  
nb-customerservice@bio-techne.com

### **Bio-Techne Canada**

21 Canmotor Ave  
Toronto, ON M8Z 4E6  
Canada  
Phone: 905.827.6400  
Toll Free: 855.668.8722  
Fax: 905.827.6402  
canada.inquires@bio-techne.com

### **Bio-Techne Ltd**

19 Barton Lane  
Abingdon Science Park  
Abingdon, OX14 3NB, United Kingdom  
Phone: (44) (0) 1235 529449  
Free Phone: 0800 37 34 15  
Fax: (44) (0) 1235 533420  
info.EMEA@bio-techne.com

### **General Contact Information**

www.novusbio.com  
Technical Support: nb-technical@bio-techne.com  
Orders: nb-customerservice@bio-techne.com  
General: novus@novusbio.com

### **Products Related to NB100-56482**

---

NB820-59217	Human Heart Whole Tissue Lysate (Adult Whole Normal)
HAF008	Goat anti-Rabbit IgG Secondary Antibody [HRP]
NB7160	Goat anti-Rabbit IgG (H+L) Secondary Antibody [HRP]
NBP2-24891	Rabbit IgG Isotype Control

---

### **Limitations**

This product is for research use only and is not approved for use in humans or in clinical diagnosis. Primary Antibodies are guaranteed for 1 year from date of receipt.

For more information on our 100% guarantee, please visit [www.novusbio.com/guarantee](http://www.novusbio.com/guarantee)

Earn gift cards/discounts by submitting a review: [www.novusbio.com/reviews/submit/NB100-56482](http://www.novusbio.com/reviews/submit/NB100-56482)

Earn gift cards/discounts by submitting a publication using this product:  
[www.novusbio.com/publications](http://www.novusbio.com/publications)

