

Product Datasheet

beta Tubulin Antibody - BSA Free NB100-56459

Unit Size: 0.1 mg

Store at 4C short term. Aliquot and store at -20C long term. Avoid freeze-thaw cycles.

www.novusbio.com



technical@novusbio.com

Publications: 11

Protocols, Publications, Related Products, Reviews, Research Tools and Images at:
www.novusbio.com/NB100-56459

Updated 9/9/2025 v.20.1

Earn rewards for product
reviews and publications.

Submit a publication at www.novusbio.com/publications

Submit a review at www.novusbio.com/reviews/destination/NB100-56459



NB100-56459

beta Tubulin Antibody - BSA Free

| Product Information | |
|---------------------|--|
| Unit Size | 0.1 mg |
| Concentration | 1.0 mg/ml |
| Storage | Store at 4C short term. Aliquot and store at -20C long term. Avoid freeze-thaw cycles. |
| Clonality | Polyclonal |
| Preservative | 0.05% Sodium Azide |
| Isotype | IgG |
| Purity | Protein G purified |
| Buffer | PBS |

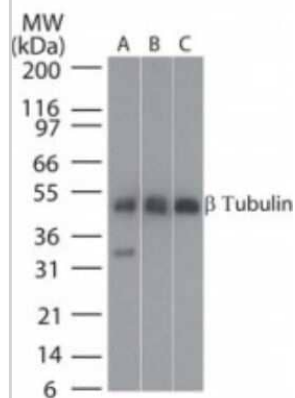
| Product Description | |
|-------------------------|---|
| Description | Novus Biologicals Rabbit beta Tubulin Antibody - BSA Free (NB100-56459) is a polyclonal antibody validated for use in IHC, WB and Simple Western. Anti-beta Tubulin Antibody: Cited in 11 publications. All Novus Biologicals antibodies are covered by our 100% guarantee. |
| Host | Rabbit |
| Gene ID | 203068 |
| Gene Symbol | TUBB |
| Species | Human, Mouse, Rat, Bovine, Canine, Chicken, Feline, Monkey, Primate, Xenopus |
| Reactivity Notes | Feline reactivity reported in scientific literature (PMID: 25668772). |
| Specificity/Sensitivity | The amino acid sequence used as immunogen has 100% identity in beta I and beta II tubulin. |
| Immunogen | A synthetic peptide corresponding to a portion of amino acids 400-450 of human b-tubulin was used as immunogen for this antibody, GenBank no. gi 27227551 gb AAN85571.1 . |

| Product Application Details | |
|-----------------------------|--|
| Applications | Western Blot, Simple Western, Immunohistochemistry-Paraffin, Immunohistochemistry |
| Recommended Dilutions | Western Blot 0.1 - 1 ug/mL, Simple Western 1:50, Immunohistochemistry 1:100 - 1:1000, Immunohistochemistry-Paraffin 5 - 10 ug/mL |
| Application Notes | In Simple Western only 10 - 15 uL of the recommended dilution is used per data point. See Simple Western Antibody Database for Simple Western validation: Tested in Human Brain lysate 0.5 mg/mL, separated by Size, antibody dilution of 1:50, apparent MW was 55 kDa. |



Images

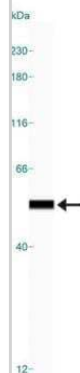
Western Blot: beta Tubulin Antibody [NB100-56459] - Analysis of beta-Tubulin in A: human brain, B: mouse brain and C: rat brain tissue lysates using the this antibody at 25 ug/mL.



Immunohistochemistry-Paraffin: beta Tubulin Antibody [NB100-56459] - Human kidney tubules stained with beta-Tubulin antibody at 10 ug/mL. Staining of formalin-fixed tissues is enhanced by boiling tissue sections in 10 mM sodium citrate buffer, pH 6.0 for 10-20 min followed by cooling at RT for 20 min.



Simple Western: beta Tubulin Antibody [NB100-56459] - Image shows a specific band for beta Tubulin in 0.5 mg/mL of Human Brain lysate. This experiment was performed under reducing conditions using the 12-230 kDa separation system.



Publications

Cheramangalam RN, Anand T, Pandey P et al. Bendless is essential for PINK1-Park mediated Mitofusins degradation under mitochondrial stress caused by loss of LRPPRC PLoS genetics 2023-04-01 [PMID: 37098042] (WB, Drosophila)

Lima C, Andrade-Barros AI, Bernardo JTG et al. Natterin-Induced Neutrophilia Is Dependent on cGAS/STING Activation via Type I IFN Signaling Pathway International journal of molecular sciences [PMID: 35408954] (WB, Mouse)

Krisko TI, Nicholls HT, Bare CJ et al. Dissociation of Adaptive Thermogenesis from Glucose Homeostasis in Microbiome-Deficient Mice Cell Metab. 2020-02-12 [PMID: 32084379]

R Goulet C, Bernard G, Tremblay S et al. Exosomes Induce Fibroblast Differentiation into Cancer-associated Fibroblasts through TGF β Signaling. Mol. Cancer Res. 2018-04-10 [PMID: 29636362] (WB)

Chen M, Arumugam TV, Leanage G et al. Disease-modifying effect of intravenous immunoglobulin in an experimental model of epilepsy Sci Rep. 2017-01-11 [PMID: 28074934] (WB, Mouse)

Williams K, Balsor JL, Beshara S et al. Experience-dependent central vision deficits: Neurobiology and visual acuity Vision Res. 2015-02-07 [PMID: 25668772] (WB, Feline)

Details:

beta-Tubulin antibody used at 1:4000 dilution in WB application for analysing 25ug lysates of the central, peripheral, and monocular regions of visual cortex /V1 section obtained from the brain tissues of 5 week old Feline/Cats which were subjected to 6 hours to 7 days of monocular deprivation (Fig. 1).

Murphy KM, Balsor J, Beshara S et al. A high-throughput semi-automated preparation for filtered synaptoneurosomes J. Neurosci. Methods. 2014-07-02 [PMID: 24997341] (WB, Canine, Rat)

Details:

beta Tubulin antibody used at 1:4000 dilution in WB on whole homogenate and synaptoneurosomes from somatosensory cortex of Long Evans rats and adult cat/feline frontal cortex.

Kamal A, Sreekanth K, Kumar PP et al. Synthesis and potential cytotoxic activity of new phenanthrylphenol-pyrrolobenzodiazepines. Eur J Med Chem. 2010-06-01 [PMID: 20171761]

Details:

Products cited for western blot: 1. PARP (IMG-401A): MCF-7 cells treated with numerous compounds, Fig 7. 2. B-Tubulin (IMG-5180A): MCF-7 cells treated with PP-PBDs, Fig 6 and Fig 7. 3. Cytochrome C (IMG-101A): MCF-7 cells treated with numerous compounds,

Boniface K, Diveu C, Morel F et al. Oncostatin M secreted by skin infiltrating T lymphocytes is a potent keratinocyte activator involved in skin inflammation. J Immunol. 2007-04-01 [PMID: 17372020]

Li R, Guan H, Yang K. Neuropeptide Y potentiates beta-adrenergic stimulation of lipolysis in 3T3-L1 adipocytes. Regul Pept. 2012-10-10 [PMID: 22750277]

Saha T. LAMP2A overexpression in breast tumors promotes cancer cell survival via chaperone-mediated autophagy. Autophagy. 2012-11-01 [PMID: 22874552]



Novus Biologicals USA

10730 E. Briarwood Avenue
Centennial, CO 80112
USA
Phone: 303.730.1950
Toll Free: 1.888.506.6887
Fax: 303.730.1966
nb-customerservice@bio-techne.com

Bio-Techne Canada

21 Canmotor Ave
Toronto, ON M8Z 4E6
Canada
Phone: 905.827.6400
Toll Free: 855.668.8722
Fax: 905.827.6402
canada.inquires@bio-techne.com

Bio-Techne Ltd

19 Barton Lane
Abingdon Science Park
Abingdon, OX14 3NB, United Kingdom
Phone: (44) (0) 1235 529449
Free Phone: 0800 37 34 15
Fax: (44) (0) 1235 533420
info.EMEA@bio-techne.com

General Contact Information

www.novusbio.com
Technical Support: nb-technical@bio-techne.com
Orders: nb-customerservice@bio-techne.com
General: novus@novusbio.com

Products Related to NB100-56459

| | |
|-------------|--|
| NB820-59177 | Human Brain Whole Tissue Lysate (Adult Whole Normal) |
| NBP2-33376H | Blue Marker Antibody (6F4-F6) [HRP] |
| HAF008 | Goat anti-Rabbit IgG Secondary Antibody [HRP] |
| NB7160 | Goat anti-Rabbit IgG (H+L) Secondary Antibody [HRP] |
| NBP2-24891 | Rabbit IgG Isotype Control |

Limitations

This product is for research use only and is not approved for use in humans or in clinical diagnosis. Primary Antibodies are guaranteed for 1 year from date of receipt.

For more information on our 100% guarantee, please visit www.novusbio.com/guarantee

Earn gift cards/discounts by submitting a review: www.novusbio.com/reviews/submit/NB100-56459

Earn gift cards/discounts by submitting a publication using this product:
www.novusbio.com/publications

