

# Product Datasheet

## IL-18 R beta/IL-1 R7/ACPL Antibody NB100-56433

Unit Size: 0.1 mg

Store at 4C short term. Aliquot and store at -20C long term. Avoid freeze-thaw cycles.

[www.novusbio.com](http://www.novusbio.com)



[technical@novusbio.com](mailto:technical@novusbio.com)

### Publications: 1

Protocols, Publications, Related Products, Reviews, Research Tools and Images at:  
[www.novusbio.com/NB100-56433](http://www.novusbio.com/NB100-56433)

Updated 9/9/2025 v.20.1

Earn rewards for product  
reviews and publications.

Submit a publication at [www.novusbio.com/publications](http://www.novusbio.com/publications)

Submit a review at [www.novusbio.com/reviews/destination/NB100-56433](http://www.novusbio.com/reviews/destination/NB100-56433)



**NB100-56433****IL-18 R beta/IL-1 R7/ACPL Antibody**

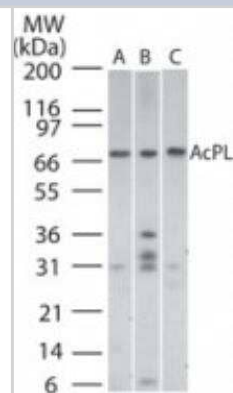
Product Information	
Unit Size	0.1 mg
Concentration	0.5 mg/ml
Storage	Store at 4C short term. Aliquot and store at -20C long term. Avoid freeze-thaw cycles.
Clonality	Polyclonal
Preservative	0.05% Sodium Azide
Isotype	IgG
Purity	Protein G purified
Buffer	PBS containing 0.05% BSA

Product Description	
Description	Novus Biologicals Rabbit IL-18 R beta/IL-1 R7/ACPL Antibody (NB100-56433) is a polyclonal antibody validated for use in WB. Anti-IL-18 R beta/IL-1 R7/ACPL Antibody: Cited in 1 publication. All Novus Biologicals antibodies are covered by our 100% guarantee.
Host	Rabbit
Gene ID	8807
Gene Symbol	IL18RAP
Species	Human, Mouse
Immunogen	A synthetic peptide corresponding to a region within amino acids 50-150 of human IL-18 Receptor accessory protein/IL-18 RA/AcPL was used immunogen.

Product Application Details	
Applications	Western Blot
Recommended Dilutions	Western Blot 1-3 ug/ml

**Images**

Western Blot: IL-18 R beta/IL-1 R7/ACPL Antibody [NB100-56433] - Analysis of IL-18 R beta/IL-1 R7/ACPL in A) Human spleen, B) Mouse spleen, and C) Mouse RAW cell lysate using this antibody.

**Publications**

Ho Lien H, Ohno Tatsukuni, Oboki Keisuke et al. IL-33 induces IL-13 production by mouse mast cells independently of IgE-FcepsilonRI signals. *J Leukoc Biol.* 2007-12-01 [PMID: 17881510] (Mouse)



### **Novus Biologicals USA**

10730 E. Briarwood Avenue  
Centennial, CO 80112  
USA  
Phone: 303.730.1950  
Toll Free: 1.888.506.6887  
Fax: 303.730.1966  
nb-customerservice@bio-techne.com

### **Bio-Techne Canada**

21 Canmotor Ave  
Toronto, ON M8Z 4E6  
Canada  
Phone: 905.827.6400  
Toll Free: 855.668.8722  
Fax: 905.827.6402  
canada.inquires@bio-techne.com

### **Bio-Techne Ltd**

19 Barton Lane  
Abingdon Science Park  
Abingdon, OX14 3NB, United Kingdom  
Phone: (44) (0) 1235 529449  
Free Phone: 0800 37 34 15  
Fax: (44) (0) 1235 533420  
info.EMEA@bio-techne.com

### **General Contact Information**

www.novusbio.com  
Technical Support: nb-technical@bio-techne.com  
Orders: nb-customerservice@bio-techne.com  
General: novus@novusbio.com

### **Products Related to NB100-56433**

---

NBP2-33376H	Blue Marker Antibody (6F4-F6) [HRP]
HAF008	Goat anti-Rabbit IgG Secondary Antibody [HRP]
NB7160	Goat anti-Rabbit IgG (H+L) Secondary Antibody [HRP]
NBP2-24891	Rabbit IgG Isotype Control

---

### **Limitations**

This product is for research use only and is not approved for use in humans or in clinical diagnosis. Primary Antibodies are guaranteed for 1 year from date of receipt.

For more information on our 100% guarantee, please visit [www.novusbio.com/guarantee](http://www.novusbio.com/guarantee)

Earn gift cards/discounts by submitting a review: [www.novusbio.com/reviews/submit/NB100-56433](http://www.novusbio.com/reviews/submit/NB100-56433)

Earn gift cards/discounts by submitting a publication using this product:  
[www.novusbio.com/publications](http://www.novusbio.com/publications)

