

# Product Datasheet

## Carm1 Antibody NB100-56374

Unit Size: 0.1 mg

Store at 4C short term. Aliquot and store at -20C long term. Avoid freeze-thaw cycles.

[www.novusbio.com](http://www.novusbio.com)



[technical@novusbio.com](mailto:technical@novusbio.com)

### Publications: 1

Protocols, Publications, Related Products, Reviews, Research Tools and Images at:  
[www.novusbio.com/NB100-56374](http://www.novusbio.com/NB100-56374)

Updated 9/9/2025 v.20.1

Earn rewards for product  
reviews and publications.

Submit a publication at [www.novusbio.com/publications](http://www.novusbio.com/publications)

Submit a review at [www.novusbio.com/reviews/destination/NB100-56374](http://www.novusbio.com/reviews/destination/NB100-56374)



**NB100-56374**

Carm1 Antibody

Product Information	
Unit Size	0.1 mg
Concentration	0.5 mg/ml
Storage	Store at 4C short term. Aliquot and store at -20C long term. Avoid freeze-thaw cycles.
Clonality	Polyclonal
Preservative	0.05% Sodium Azide
Isotype	IgG
Purity	Protein G purified
Buffer	PBS containing 0.05% BSA

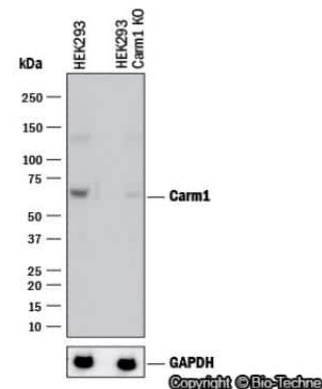
Product Description	
Description	Novus Biologicals Knockout (KO) Validated Rabbit Carm1 Antibody (NB100-56374) is a polyclonal antibody validated for use in IHC, WB and ICC/IF. Anti-Carm1 Antibody: Cited in 1 publication. All Novus Biologicals antibodies are covered by our 100% guarantee.
Host	Rabbit
Gene ID	10498
Gene Symbol	CARM1
Species	Human
Immunogen	This antibody was developed against a mixture of synthetic peptides containing amino acids 45-69 and 595-608 of human PRMT4.

Product Application Details	
Applications	Western Blot, Immunohistochemistry-Paraffin, Immunocytochemistry/Immunofluorescence, Immunohistochemistry, Knockout Validated
Recommended Dilutions	Western Blot 0.5-2 ug/ml, Immunohistochemistry, Immunocytochemistry/Immunofluorescence 2-5 ug/ml, Immunohistochemistry-Paraffin, Knockout Validated

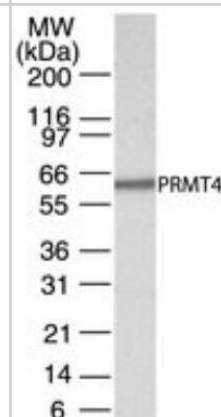


## Images

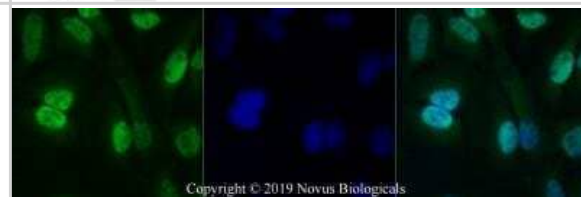
**Western Blot: Carm1 Antibody [NB100-56374]** - Western blot shows lysates of HEK293T human embryonic kidney parental cell line and Carm1 knockout (KO) HEK293T cell line. PVDF membrane was probed with 0.5 ug/ml of Rabbit Anti-Human Carm1 Polyclonal Antibody (Catalog # NB100-56374) followed by HRP-conjugated Anti-Rabbit IgG Secondary Antibody (Catalog #HAF008). Specific band was detected for Carm1 at approximately 65 kDa (as indicated) in the parental HEK293T cell line, but is not detectable in the knockout HEK293T cell line. This experiment was conducted under reducing conditions.



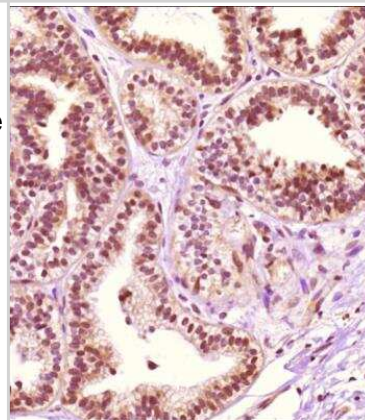
**Western Blot: Carm1 Antibody [NB100-56374]** - Analysis of PRMT4 in cell lysates from HeLa cells using this antibody. 5 ug/ml. Twenty ug of HeLa cell lysate was loaded per well of mini gel.



**Immunocytochemistry/Immunofluorescence: Carm1 Antibody [NB100-56374]** - HeLa cells were fixed for 10 minutes using 10% formalin and then permeabilized for 5 minutes using 1X PBS + 0.5% Triton-X100. The cells were incubated with anti-Carm1 at 5 ug/ml overnight at 4C and detected with an anti-rabbit Dylight 488 (Green) at a 1:500 dilution. Nuclei were counterstained with DAPI (Blue). Cells were imaged using a 40X objective.



**Immunohistochemistry-Paraffin: Carm1 Antibody [NB100-56374]** - Analysis of a FFPE tissue section of the human breast carcinoma using 1:200 dilution of Carm1 antibody (NB100-56374). The signal was developed using HRP-DAB method which followed counterstaining of the cells with hematoxylin. The antibody generated nuclear and cytoplasmic staining.



## Publications

Herrmann F, Pably P, Eckerich C et al. Human protein arginine methyltransferases in vivo--distinct properties of eight canonical members of the PRMT family. J Cell Sci. 2009-03-01 [PMID: 19208762] (WB)

### Details:

1. IMG-496 (PRMT4): WB (HEk 293 cells), Fig. 1C,B. 2. IMG-506 (PRMT6): WB (HEk 293 cells), Fig. 1C,B.





### **Novus Biologicals USA**

10730 E. Briarwood Avenue  
Centennial, CO 80112  
USA  
Phone: 303.730.1950  
Toll Free: 1.888.506.6887  
Fax: 303.730.1966  
nb-customerservice@bio-techne.com

### **Bio-Techne Canada**

21 Canmotor Ave  
Toronto, ON M8Z 4E6  
Canada  
Phone: 905.827.6400  
Toll Free: 855.668.8722  
Fax: 905.827.6402  
canada.inquires@bio-techne.com

### **Bio-Techne Ltd**

19 Barton Lane  
Abingdon Science Park  
Abingdon, OX14 3NB, United Kingdom  
Phone: (44) (0) 1235 529449  
Free Phone: 0800 37 34 15  
Fax: (44) (0) 1235 533420  
info.EMEA@bio-techne.com

### **General Contact Information**

www.novusbio.com  
Technical Support: nb-technical@bio-techne.com  
Orders: nb-customerservice@bio-techne.com  
General: novus@novusbio.com

### **Products Related to NB100-56374**

---

NB800-PC1	HeLa Whole Cell Lysate
NBP2-33376H	Blue Marker Antibody (6F4-F6) [HRP]
HAF008	Goat anti-Rabbit IgG Secondary Antibody [HRP]
NB7160	Goat anti-Rabbit IgG (H+L) Secondary Antibody [HRP]
NBP2-24891	Rabbit IgG Isotype Control

---

### **Limitations**

This product is for research use only and is not approved for use in humans or in clinical diagnosis. Primary Antibodies are guaranteed for 1 year from date of receipt.

For more information on our 100% guarantee, please visit [www.novusbio.com/guarantee](http://www.novusbio.com/guarantee)

Earn gift cards/discounts by submitting a review: [www.novusbio.com/reviews/submit/NB100-56374](http://www.novusbio.com/reviews/submit/NB100-56374)

Earn gift cards/discounts by submitting a publication using this product:  
[www.novusbio.com/publications](http://www.novusbio.com/publications)

