

Product Datasheet

MBD1 Antibody - BSA Free NB100-56330

Unit Size: 0.1 mg

Store at 4C short term. Aliquot and store at -20C long term. Avoid freeze-thaw cycles.

www.novusbio.com



technical@novusbio.com

Protocols, Publications, Related Products, Reviews, Research Tools and Images at:
www.novusbio.com/NB100-56330

Updated 9/9/2025 v.20.1

Earn rewards for product
reviews and publications.

Submit a publication at www.novusbio.com/publications

Submit a review at www.novusbio.com/reviews/destination/NB100-56330



NB100-56330

MBD1 Antibody - BSA Free

Product Information	
Unit Size	0.1 mg
Concentration	0.5 mg/ml
Storage	Store at 4C short term. Aliquot and store at -20C long term. Avoid freeze-thaw cycles.
Clonality	Polyclonal
Preservative	0.02% Sodium Azide
Isotype	IgG
Purity	Protein G purified
Buffer	PBS

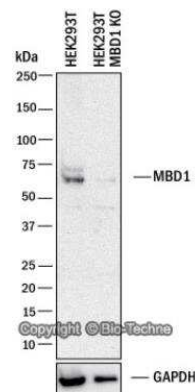
Product Description	
Description	Novus Biologicals Rabbit MBD1 Antibody - BSA Free (NB100-56330) is a polyclonal antibody validated for use in WB. All Novus Biologicals antibodies are covered by our 100% guarantee.
Host	Rabbit
Gene ID	4152
Gene Symbol	MBD1
Species	Human
Immunogen	This antibody was developed by immunizing rabbits with a mixture of synthetic peptides corresponding to amino acids 98-113 (RQVGPQSGEVRKEAPR) and 391-405 (SESEDGAGSPPPYRR) of human MBD1.

Product Application Details	
Applications	Western Blot, Knockdown Validated
Recommended Dilutions	Western Blot 2 ug/ml, Knockdown Validated

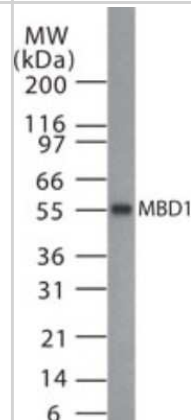


Images

Western Blot: MBD1 Antibody [NB100-56330] - Western blot shows lysates of HEK293T human embryonic kidney parental cell line and MBD1 knockout (KO) HEK293T cell line. PVDF membrane was probed with 2.0 ug/ml of Rabbit Anti-Human MBD1 Polyclonal Antibody (Catalog # NB100-56330) followed by HRP-conjugated Anti-Rabbit IgG Secondary Antibody (Catalog #HAF008). Specific band was detected for MBD1 at approximately 60 kDa (as indicated) in the parental HEK293T cell line, but is not detectable in the knockout HEK293T cell line. This experiment was conducted under reducing conditions.



Western Blot: MBD1 Antibody [NB100-56330] - Analysis of MBD1 in HeLa cell lysate with this antibody. A protein band with an approximate molecular weight of 55 kDa was detected.





Novus Biologicals USA

10730 E. Briarwood Avenue
Centennial, CO 80112
USA
Phone: 303.730.1950
Toll Free: 1.888.506.6887
Fax: 303.730.1966
nb-customerservice@bio-techne.com

Bio-Techne Canada

21 Canmotor Ave
Toronto, ON M8Z 4E6
Canada
Phone: 905.827.6400
Toll Free: 855.668.8722
Fax: 905.827.6402
canada.inquires@bio-techne.com

Bio-Techne Ltd

19 Barton Lane
Abingdon Science Park
Abingdon, OX14 3NB, United Kingdom
Phone: (44) (0) 1235 529449
Free Phone: 0800 37 34 15
Fax: (44) (0) 1235 533420
info.EMEA@bio-techne.com

General Contact Information

www.novusbio.com
Technical Support: nb-technical@bio-techne.com
Orders: nb-customerservice@bio-techne.com
General: novus@novusbio.com

Products Related to NB100-56330

NB800-PC1	HeLa Whole Cell Lysate
NBP2-33376H	Blue Marker Antibody (6F4-F6) [HRP]
HAF008	Goat anti-Rabbit IgG Secondary Antibody [HRP]
NB7160	Goat anti-Rabbit IgG (H+L) Secondary Antibody [HRP]
NBP2-24891	Rabbit IgG Isotype Control

Limitations

This product is for research use only and is not approved for use in humans or in clinical diagnosis. Primary Antibodies are guaranteed for 1 year from date of receipt.

For more information on our 100% guarantee, please visit www.novusbio.com/guarantee

Earn gift cards/discounts by submitting a review: www.novusbio.com/reviews/submit/NB100-56330

Earn gift cards/discounts by submitting a publication using this product:
www.novusbio.com/publications

