

Product Datasheet

MAD2L1 Antibody - BSA Free NB100-563

Unit Size: 100 ul

Store at 4C. Do not freeze.

www.novusbio.com



technical@novusbio.com

Reviews: 1 **Publications: 14**

Protocols, Publications, Related Products, Reviews, Research Tools and Images at:
www.novusbio.com/NB100-563

Updated 9/9/2025 v.20.1

Earn rewards for product
reviews and publications.

Submit a publication at www.novusbio.com/publications

Submit a review at www.novusbio.com/reviews/destination/NB100-563



NB100-563

MAD2L1 Antibody - BSA Free

Product Information	
Unit Size	100 ul
Concentration	1.0 mg/ml
Storage	Store at 4C. Do not freeze.
Clonality	Polyclonal
Preservative	0.09% Sodium Azide
Isotype	IgG
Purity	Immunogen affinity purified
Buffer	Tris-Citrate/Phosphate (pH 7.0 - 8.0)
Target Molecular Weight	23 kDa

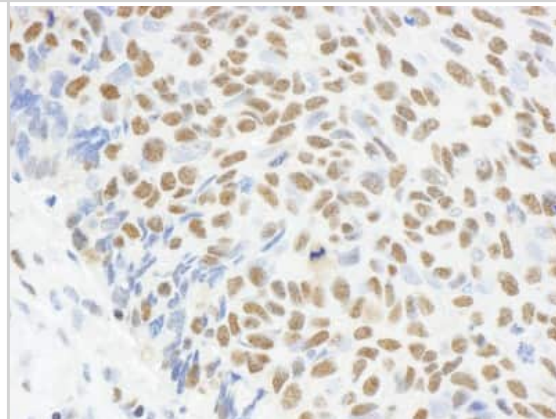
Product Description	
Description	Novus Biologicals Rabbit MAD2L1 Antibody - BSA Free (NB100-563) is a polyclonal antibody validated for use in IHC, WB, ICC/IF and IP. Anti-MAD2L1 Antibody: Cited in 14 publications. All Novus Biologicals antibodies are covered by our 100% guarantee.
Host	Rabbit
Gene ID	4085
Gene Symbol	MAD2L1
Species	Human
Immunogen	The immunogen recognized by this antibody maps to a region between residues 100 and 150 of human Mitotic Arrest Deficient 2 using the numbering given in SwissProt entry Q13257 (GeneID 4085).

Product Application Details	
Applications	Western Blot, Immunohistochemistry-Paraffin, Immunocytochemistry/Immunofluorescence, Immunohistochemistry, Immunoprecipitation
Recommended Dilutions	Western Blot 1:100-1:2000, Immunohistochemistry 1:1000-1:5000, Immunocytochemistry/ Immunofluorescence, Immunoprecipitation 2-4 ug/mg lysate, Immunohistochemistry-Paraffin 1:1000-1:5000
Application Notes	Epitope retrieval with Tris-EDTA pH9.0 is recommended for FFPE tissue sections. Use in ICC/IF was reported in scientific literature (PMID: 29497093).

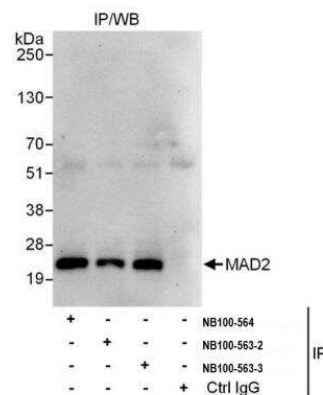


Images

Immunohistochemistry: MAD2L1 Antibody [NB100-563] - Sample: FFPE section of human lung carcinoma. Antibody: Affinity purified rabbit anti-MAD2 used at a dilution of 1:1,000 (1ug/ml). Detection: DAB



Immunoprecipitation: MAD2L1 Antibody [NB100-563] - Detection of human MAD2L1 by western blot of immunoprecipitates. Samples: Whole cell lysate (1 mg for IP, 20% of IP loaded) from HeLa cells. Antibodies: Affinity purified rabbit anti-MAD2L1 antibody NB100-563 (lot 3) used for IP at 3 ug/mg lysate. MAD2L1 was also immunoprecipitated by a previous lot (lot 2) and by rabbit anti-MAD2L1 antibody NB100-564. Detection: Chemiluminescence with an exposure time of 30 seconds.



Publications

Itoh Go, Ikeda Masanori, Iemura Kenji et al. Lateral attachment of kinetochores to microtubules is enriched in prometaphase rosette and facilitates chromosome alignment and bi-orientation establishment. *Medicine* 2018-03-01 [PMID: 29497093] (ICC/IF, Human)

Ikeda M, Tanaka K. Plk1 bound to Bub1 contributes to spindle assembly checkpoint activity during mitosis *Sci Rep* 2017-08-18 [PMID: 28821799] (WB, Human)

Guccini S, Lombardi S, Pisani A et al. Effects of spindle poisons in peripheral human lymphocytes by the in vitro cytokinesis-block micronucleus assay. *Mutagenesis* 2012-11-01 [PMID: 22952150]

Matson DR, Demirel PB, Stukenberg PT, Burke DJ. A conserved role for COMA/CENP-H/I/N kinetochore proteins in the spindle checkpoint. *FEBS J.* 2012-03-16 [PMID: 22426531]

McHedlishvili N, Wieser S, Holtackers R et al. Kinetochores accelerate centrosome separation to ensure faithful chromosome segregation. *J Cell Sci* 2012-02-01 [PMID: 22399803]

Klebig C, Korinth D, Meraldi P et al. Bub1 regulates chromosome segregation in a kinetochore-independent manner. *J Cell Biol* 2009-06-01 [PMID: 19487456]

Chan YW, Fava LL, Uldschmid A et al. Mitotic control of kinetochore-associated dynein and spindle orientation by human Spindly. *J Cell Biol.* 2009-06-01 [PMID: 19468067]

Yun M, Han YH, Yoon SH et al. p31^{comet} induces cellular senescence through p21 accumulation and Mad2 disruption. *Mol Cancer Res* 2009-03-01 [PMID: 19276188]

Lince-Faria M, Maffini S, Orr B et al. Spatiotemporal control of mitosis by the conserved spindle matrix protein Megator. *J Cell Biol* 2009-03-01 [PMID: 19273613]

Vader G, Crujisen CW, van Harn T et al. The chromosomal passenger complex controls spindle checkpoint function independent from its role in correcting microtubule kinetochore interactions. *Mol Biol Cell* 2007-11-01 [PMID: 17699588]

Santamaria A, Neef R, Eberspacher U et al. Use of the novel Plk1 inhibitor ZK-thiazolidinone to elucidate functions of Plk1 in early and late stages of mitosis. *Mol Biol Cell* 2007-10-01 [PMID: 17671160]

Agoston AT, Argani P, De Marzo AM et al. Retinoblastoma pathway dysregulation causes DNA methyltransferase 1 overexpression in cancer via MAD2-mediated inhibition of the anaphase-promoting complex. *Am J Pathol* 2007-05-01 [PMID: 17456764]

More publications at <http://www.novusbio.com/NB100-563>





Novus Biologicals USA

10730 E. Briarwood Avenue
Centennial, CO 80112
USA
Phone: 303.730.1950
Toll Free: 1.888.506.6887
Fax: 303.730.1966
nb-customerservice@bio-techne.com

Bio-Techne Canada

21 Canmotor Ave
Toronto, ON M8Z 4E6
Canada
Phone: 905.827.6400
Toll Free: 855.668.8722
Fax: 905.827.6402
canada.inquires@bio-techne.com

Bio-Techne Ltd

19 Barton Lane
Abingdon Science Park
Abingdon, OX14 3NB, United Kingdom
Phone: (44) (0) 1235 529449
Free Phone: 0800 37 34 15
Fax: (44) (0) 1235 533420
info.EMEA@bio-techne.com

General Contact Information

www.novusbio.com
Technical Support: nb-technical@bio-techne.com
Orders: nb-customerservice@bio-techne.com
General: novus@novusbio.com

Products Related to NB100-563

NB800-PC1	HeLa Whole Cell Lysate
NBP2-33376H	Blue Marker Antibody (6F4-F6) [HRP]
HAF008	Goat anti-Rabbit IgG Secondary Antibody [HRP]
NB7160	Goat anti-Rabbit IgG (H+L) Secondary Antibody [HRP]
NBP2-24891	Rabbit IgG Isotype Control

Limitations

This product is for research use only and is not approved for use in humans or in clinical diagnosis. Primary Antibodies are guaranteed for 1 year from date of receipt.

For more information on our 100% guarantee, please visit www.novusbio.com/guarantee

Earn gift cards/discounts by submitting a review: www.novusbio.com/reviews/submit/NB100-563

Earn gift cards/discounts by submitting a publication using this product:
www.novusbio.com/publications

