

Product Datasheet

XRCC1 [p Ser485, p Thr488] Antibody - BSA Free NB100-541

Unit Size: 100 ul

Store at 4C. Do not freeze.

www.novusbio.com



technical@novusbio.com

Protocols, Publications, Related Products, Reviews, Research Tools and Images at:
www.novusbio.com/NB100-541

Updated 9/9/2025 v.20.1

Earn rewards for product
reviews and publications.

Submit a publication at www.novusbio.com/publications

Submit a review at www.novusbio.com/reviews/destination/NB100-541



NB100-541

XRCC1 [p Ser485, p Thr488] Antibody - BSA Free

Product Information	
Unit Size	100 ul
Concentration	1.0 mg/ml
Storage	Store at 4C. Do not freeze.
Clonality	Polyclonal
Preservative	0.09% Sodium Azide
Isotype	IgG
Purity	Immunogen affinity purified
Buffer	Tris-Citrate/Phosphate (pH 7.0 - 8.0)

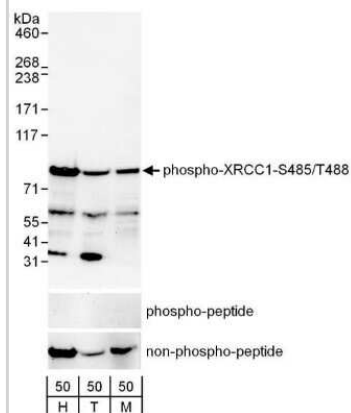
Product Description	
Description	Novus Biologicals Rabbit XRCC1 [p Ser485, p Thr488] Antibody - BSA Free (NB100-541) is a polyclonal antibody validated for use in IHC and WB. All Novus Biologicals antibodies are covered by our 100% guarantee.
Host	Rabbit
Gene ID	7515
Gene Symbol	XRCC1
Species	Human, Mouse
Specificity/Sensitivity	NB100-541 is specific for human phospho-XRCC1 protein.
Immunogen	The immunogen recognized by this antibody maps to a region of surrounding residues Ser 485 and Thr 488 of human X-ray Repair Complementing protein 1 using the numbering given in SwissProt entry P18887 (GeneID 7515).

Product Application Details	
Applications	Western Blot, Immunohistochemistry-Paraffin, Immunohistochemistry
Recommended Dilutions	Western Blot 1:1000-1:5000, Immunohistochemistry 1:2000 - 1:10000, Immunohistochemistry-Paraffin 1:10-1:500
Application Notes	Optimal working dilutions should be determined experimentally by the investigator. Epitope retrieval with citrate buffer pH 6.0 is recommended for FFPE tissue sections.

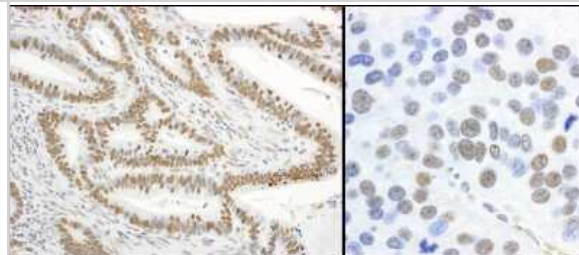


Images

Western Blot: XRCC1 [p Ser485, p Thr488] Antibody [NB100-541] - Whole cell lysate (50 ug) from asynchronously growing HeLa (H), 293T (T) and mouse NIH-3T3 (M) cells. Antibody used at 0.1 ug/ml. The binding of the antibody was blocked by pre-incubation with the phospho-peptide but was not blocked by pre-incubation with



Immunohistochemistry-Paraffin: XRCC1 [p Ser485, p Thr488] Antibody [NB100-541] - Sample: FFPE sections of human stomach carcinoma (left) and mouse renal cell carcinoma (right). Antibody: Affinity purified rabbit anti- Phospho-XRCC1-S485/T488 used at a dilution of 1:5,000 (0.2ug/ml). Detection: DAB





Novus Biologicals USA

10730 E. Briarwood Avenue
Centennial, CO 80112
USA
Phone: 303.730.1950
Toll Free: 1.888.506.6887
Fax: 303.730.1966
nb-customerservice@bio-techne.com

Bio-Techne Canada

21 Canmotor Ave
Toronto, ON M8Z 4E6
Canada
Phone: 905.827.6400
Toll Free: 855.668.8722
Fax: 905.827.6402
canada.inquires@bio-techne.com

Bio-Techne Ltd

19 Barton Lane
Abingdon Science Park
Abingdon, OX14 3NB, United Kingdom
Phone: (44) (0) 1235 529449
Free Phone: 0800 37 34 15
Fax: (44) (0) 1235 533420
info.EMEA@bio-techne.com

General Contact Information

www.novusbio.com
Technical Support: nb-technical@bio-techne.com
Orders: nb-customerservice@bio-techne.com
General: novus@novusbio.com

Products Related to NB100-541

NBL1-17913	XRCC1 Overexpression Lysate
NBP2-33376H	Blue Marker Antibody (6F4-F6) [HRP]
HAF008	Goat anti-Rabbit IgG Secondary Antibody [HRP]
NB7160	Goat anti-Rabbit IgG (H+L) Secondary Antibody [HRP]
NBP2-24891	Rabbit IgG Isotype Control

Limitations

This product is for research use only and is not approved for use in humans or in clinical diagnosis. Primary Antibodies are guaranteed for 1 year from date of receipt.

For more information on our 100% guarantee, please visit www.novusbio.com/guarantee

Earn gift cards/discounts by submitting a review: www.novusbio.com/reviews/submit/NB100-541

Earn gift cards/discounts by submitting a publication using this product:
www.novusbio.com/publications

