

Product Datasheet

GLUT10 Antibody - BSA Free NB100-490

Unit Size: 0.1 mg

Store at 4C short term. Aliquot and store at -20C long term. Avoid freeze-thaw cycles.

www.novusbio.com



technical@novusbio.com

Protocols, Publications, Related Products, Reviews, Research Tools and Images at:
www.novusbio.com/NB100-490

Updated 9/9/2025 v.20.1

Earn rewards for product
reviews and publications.

Submit a publication at www.novusbio.com/publications

Submit a review at www.novusbio.com/reviews/destination/NB100-490



NB100-490

GLUT10 Antibody - BSA Free

Product Information	
Unit Size	0.1 mg
Concentration	1 mg/ml
Storage	Store at 4C short term. Aliquot and store at -20C long term. Avoid freeze-thaw cycles.
Clonality	Polyclonal
Preservative	0.02% Sodium Azide
Isotype	IgG
Purity	Immunogen affinity purified
Buffer	PBS
Target Molecular Weight	52 kDa
Product Description	
Description	Novus Biologicals Rabbit GLUT10 Antibody - BSA Free (NB100-490) is a polyclonal antibody validated for use in WB and ICC/IF. All Novus Biologicals antibodies are covered by our 100% guarantee.
Host	Rabbit
Gene ID	81031
Gene Symbol	SLC2A10
Species	Human, Mouse
Reactivity Notes	Human and mouse. Other species have not been tested.
Specificity/Sensitivity	Human GLUT10 protein.
Immunogen	A synthetic peptide containing residues 367-385 (ILSTAKKTKPHPRSGDPSA) of the human GLUT10 protein.
Product Application Details	
Applications	Western Blot, Immunocytochemistry/ Immunofluorescence
Recommended Dilutions	Western Blot 1:500-1:1000, Immunocytochemistry/ Immunofluorescence 1:10-1:2000
Application Notes	This antibody has been tested in Western blot and immunofluorescence. No other applications have been tested. Western blot - Use at 1:500 to 1:1,000 dilution. *The investigator should determine the optimal dilution. The observed molecular weight of the protein may vary from the listed predicted molecular weight due to post translational modifications, post translation cleavages, relative charges, and other experimental factors.



Images

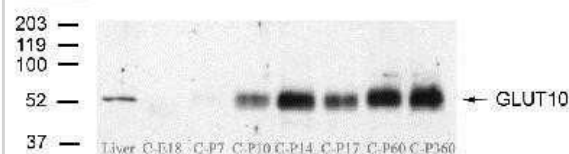
Western Blot: GLUT10 Antibody [NB100-490] - NCI-H1299 non-small cell lung tumor cells were transfected with the eukaryotic expression vectors pcDNA3.1/V5 (lanes 1,2), pCMV-GLUT10 (lanes 3,4), and pCMV-GLUT1 (lanes 5,6). GLUT10 was detected using NB100-490.



Immunocytochemistry/Immunofluorescence: GLUT10 Antibody [NB100-490] - Dissected inner ear tissues from mice immersed in 20% sucrose PBS solution (pH7.4) followed by being embedded in OCT. Tissues snap frozen in liquid nitrogen & 7um sections were cut by cryostat. Cochlear sections from organ of Corti were dissected & rinsed by 0.1% Triton in PBS (pH7.4,PBST) for 30min. Sections were blocked with 5% goat serum in PBST at RT 1hr. NB100-490 was used at 1:200 to label the cochlear sections at 4C. Sections were incubated with secondary (anti-rabbit Cy3, 1:400) RT 1 hr. Slides mounted with fluoromont G and examined under a confocal microscope. Strong immunoreactivity (red) is observed in the inner and outer hair cells and basilar membrane. Spiral ganglion neurons display moderate staining.



Western Blot: GLUT10 Antibody [NB100-490] - Cochlea from embryonic mice and mice up to 1 yr old were removed and the pure membrane fraction loaded on 4-20% SDS gel. Following electrophoresis, transfer and blocking, the blot was incubated overnight at 4C with NB100-490 at 1:500 dilution followed by incubation with secondary Ab at 1:3,000 dilution for 1h at room temp. Protein bands were visualized on x-ray film with SuperSignal west femto ECL substrate. Lane 1:10ug of protein from liver Lane 2:10ug of protein from cochlea (E18) Lane 3:10ug of protein from cochlea (P7) Lane 4:10ug of protein from cochlea (P10) Lane 5:10ug of protein from cochlea (P14) Lane 6:10ug of protein from cochlea (P17) Lane 7:10ug of protein from cochlea (P60) Lane 8:10ug of protein from cochlea (1 Year)





Novus Biologicals USA

10730 E. Briarwood Avenue
Centennial, CO 80112
USA
Phone: 303.730.1950
Toll Free: 1.888.506.6887
Fax: 303.730.1966
nb-customerservice@bio-techne.com

Bio-Techne Canada

21 Canmotor Ave
Toronto, ON M8Z 4E6
Canada
Phone: 905.827.6400
Toll Free: 855.668.8722
Fax: 905.827.6402
canada.inquires@bio-techne.com

Bio-Techne Ltd

19 Barton Lane
Abingdon Science Park
Abingdon, OX14 3NB, United Kingdom
Phone: (44) (0) 1235 529449
Free Phone: 0800 37 34 15
Fax: (44) (0) 1235 533420
info.EMEA@bio-techne.com

General Contact Information

www.novusbio.com
Technical Support: nb-technical@bio-techne.com
Orders: nb-customerservice@bio-techne.com
General: novus@novusbio.com

Products Related to NB100-490

NBP2-33376H	Blue Marker Antibody (6F4-F6) [HRP]
HAF008	Goat anti-Rabbit IgG Secondary Antibody [HRP]
NB7160	Goat anti-Rabbit IgG (H+L) Secondary Antibody [HRP]
NBP2-24891	Rabbit IgG Isotype Control

Limitations

This product is for research use only and is not approved for use in humans or in clinical diagnosis. Primary Antibodies are guaranteed for 1 year from date of receipt.

For more information on our 100% guarantee, please visit www.novusbio.com/guarantee

Earn gift cards/discounts by submitting a review: www.novusbio.com/reviews/submit/NB100-490

Earn gift cards/discounts by submitting a publication using this product:
www.novusbio.com/publications

