

Product Datasheet

HIF-1 alpha Antibody NB100-449

Unit Size: 0.1 ml

Store at 4C. Do not freeze.

www.novusbio.com



technical@novusbio.com

Reviews: 28 Publications: 324

Protocols, Publications, Related Products, Reviews, Research Tools and Images at:
www.novusbio.com/NB100-449

Updated 9/9/2025 v.20.1

**Earn rewards for product
reviews and publications.**

Submit a publication at www.novusbio.com/publications

Submit a review at www.novusbio.com/reviews/destination/NB100-449



NB100-449

HIF-1 alpha Antibody

Product Information	
Unit Size	0.1 ml
Concentration	0.2 mg/ml
Storage	Store at 4C. Do not freeze.
Clonality	Polyclonal
Preservative	0.09% Sodium Azide
Isotype	IgG
Purity	Immunogen affinity purified
Buffer	TBS, 0.1% BSA
Target Molecular Weight	93 kDa

Product Description	
Description	Novus Biologicals Knockout (KO) Validated Rabbit HIF-1 alpha Antibody (NB100-449) is a polyclonal antibody validated for use in IHC, WB, ELISA, Flow, ICC/IF, Simple Western, IP and ChIP. Anti-HIF-1 alpha Antibody: Cited in 310 publications. All Novus Biologicals antibodies are covered by our 100% guarantee.
Host	Rabbit
Gene ID	3091
Gene Symbol	HIF1A
Species	Human, Mouse, Rat, Canine, Chicken, Goat, Primate, Monkey
Reactivity Notes	Monkey (COS-7) and Rat reactivities were reported in customer review feedback. Detection of HIF1 alpha in both Mouse and Human tissue by IHC. Chicken reactivity was reported in scientific literature (PMID: 25632022). Canine reactivity reported in scientific literature (PMID: 28701694). Reactivity with Goat is reported in PMID: 21599540.
Immunogen	The immunogen recognized by this HIF-1 alpha Antibody maps to a region between residues 775 and the C-terminus (residue 826) of human hypoxia-inducible factor 1 [Uniprot# Q16665].

Product Application Details	
Applications	Western Blot, Simple Western, Immunohistochemistry-Paraffin, ELISA, Flow Cytometry, Flow (Intracellular), Immunocytochemistry/ Immunofluorescence, Immunohistochemistry, Immunohistochemistry-Frozen, Immunoprecipitation, Chromatin Immunoprecipitation (ChIP), Knockdown Validated, Knockout Validated
Recommended Dilutions	Western Blot 1:2000 - 1:10000, Simple Western 1:200, Flow Cytometry 0.125 ug per 1 million cells in a 150 mcl reaction, ELISA 1:100-1:2000, Immunohistochemistry 1:100 - 1:500, Immunocytochemistry/ Immunofluorescence 1:10-1:500, Immunoprecipitation 2-5 ug/mg lysate, Immunohistochemistry-Paraffin 1:50-1:200, Immunohistochemistry-Frozen 1:50-1:200, Flow (Intracellular), Chromatin Immunoprecipitation (ChIP) 1:10-1:500, Knockout Validated, Knockdown Validated

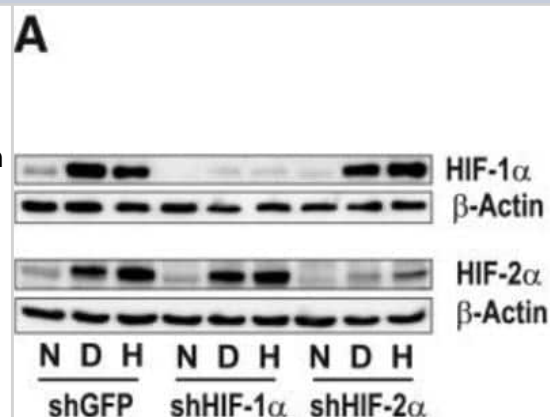


Application Notes

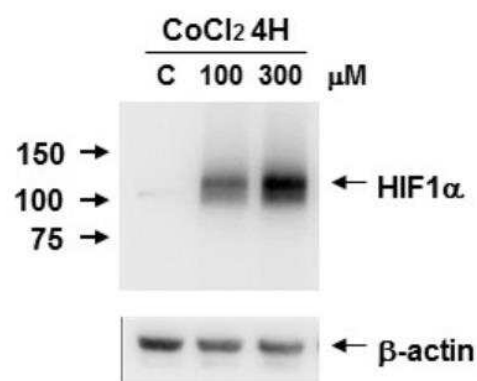
ChIP usage was reported in scientific literature (PMID: 25557133). In Simple Western only 10 - 15 μ L of the recommended dilution is used per data point. See [Simple Western Antibody Database](#) for Simple Western validation: Tested in Hypoxic HeLa lysate 0.5 mg/mL, separated by Size, antibody dilution of 1:200, apparent MW was 115 kDa. For IHC-P, Tris-EDTA pH 9.0 buffer is recommended for the heat induced epitope retrieval. ELISA (PMID: 17556599 and 16966370). Knockout data (PMID: 31793879). Use in Flow-intracellular reported in scientific literature (PMID:31722203).

Images

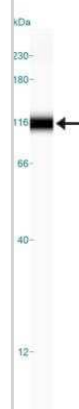
Western Blot: HIF-1 alpha Antibody [NB100-449] - Morphological alterations induced by DMOG are HIF-1alpha dependent. gIEND.2 cells were stably transfected with shGFP, shHIF-1alpha or shHIF-2alpha. The clones were cultured under normoxic (N) or hypoxic (H, 1% O₂) conditions, or treated with DMOG for 6 h. 30 μ g protein of cellular protein were loaded for the detection of HIF-1alpha, and nuclear extracts (20 μ g protein) were used for the detection of HIF-2alpha. Image collected and cropped by CiteAb from the following publication (<https://biosignaling.biomedcentral.com/articles/10.1186/1478-811X-11-80>) licensed under a CC-BY license.



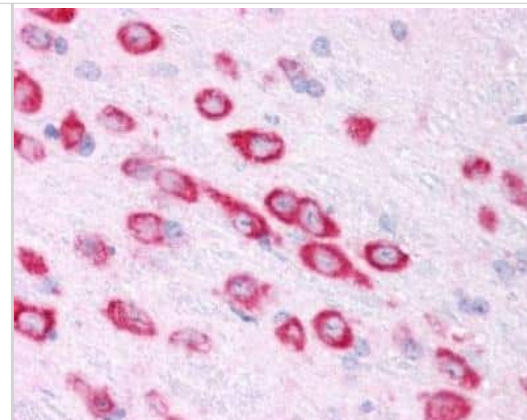
Western Blot: HIF-1 alpha Antibody [NB100-449] - HIF-1 alpha induction on Caki-1 cell lysate using CoCl₂. Image from verified customer review.



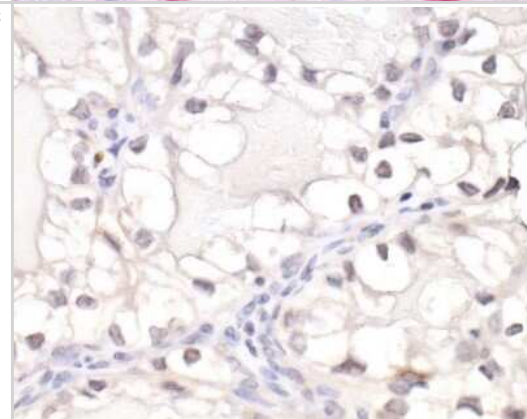
Simple Western: HIF-1 alpha Antibody [NB100-449] - Simple Western lane view shows a specific band for HIF-1 alpha in 0.5 mg/ml of hypoxic HeLa lysate. This experiment was performed under reducing conditions using the 12-230 kDa separation system.



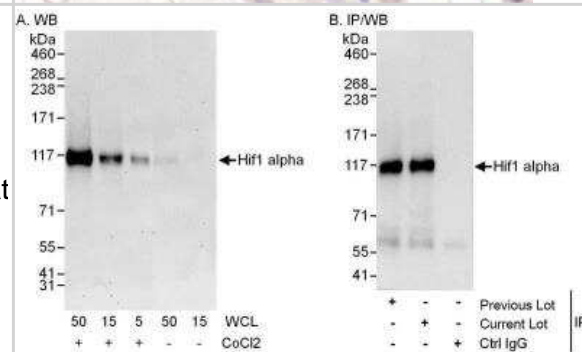
Immunohistochemistry: HIF-1 alpha Antibody [NB100-449] - Mouse Brain, Neurons 40X



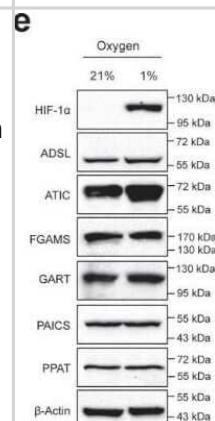
Immunohistochemistry: HIF-1 alpha Antibody [NB100-449] - Detection of human HIF1-alpha by immunohistochemistry. Sample: FFPE section of renal cell carcinoma. Antibody: Affinity purified rabbit anti-HIF1-alpha antibody (NB110-58773). Detection: DAB



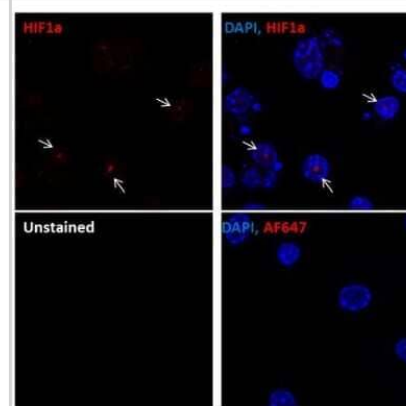
Western Blot: HIF-1 alpha Antibody [NB100-449] - Detection of Human HIF-1 alpha by Western Blot and Immunoprecipitation. Samples: Whole cell lysate (5, 15 and 50 ug for WB; 1 mg for IP, 20% of IP loaded) from HeLa cells that were either treated with cobalt chloride (+; 200 uM) or mock treated (-). Antibodies: Affinity purified rabbit anti-HIF1 alpha antibody used for WB at 0.1 ug/mL(A) and 1 ug/mL (B) and used for IP at 3 ug/mg lysate. HIF-1 alpha was also immunoprecipitated by a previous lot of this antibody. Detection: Chemiluminescence with exposure times of 30 seconds (A) and 10 seconds (B).



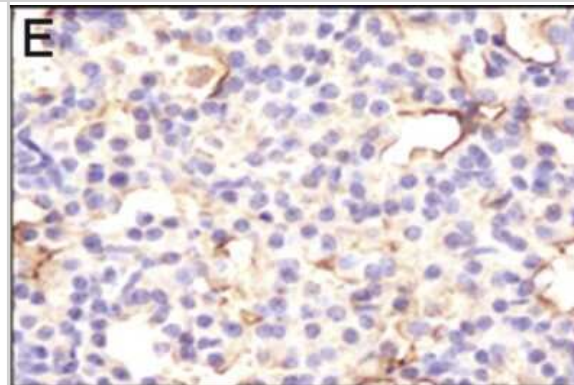
Western Blot: HIF-1 alpha Antibody [NB100-449] - Blot showing the effect of hypoxia on the protein expression levels of the purine biosynthetic enzymes. HIF-1 alpha is stabilized in hypoxia as expected, and no significant increase in the purine enzymes was detected between normoxic (21% oxygen) and hypoxic (1% oxygen) growth conditions. The positions of molecular markers surrounding each band of interest are shown for each blot. ADSL (NBP2-03107), ATIC (NBP2-01941), FGAMS (NBP1-84691), GART (H00002618-M01), HIF-1a (NB100-449), PAICS (NBP2-02817), PPAT (NBP2-02056). Image collected and cropped by CiteAb from the following publication (<https://pubmed.ncbi.nlm.nih.gov/32439803/>) licensed under a CC-BY license.



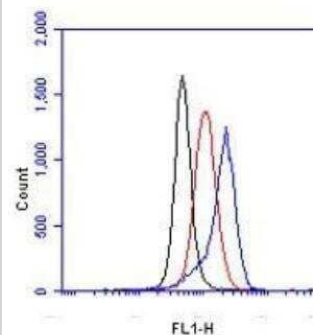
Immunocytochemistry/Immunofluorescence: HIF-1 alpha Antibody [NB100-449] - Murine primary bone marrow derived macrophages stained with HIF1-alpha antibody (red). Nuclei were counterstained with DAPI (blue). Image from verified customer review.



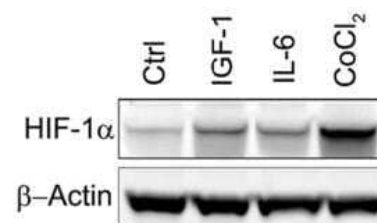
Immunohistochemistry-Paraffin: HIF-1 alpha Antibody [NB100-449] - Analysis of microvascular density and HIF-1alpha activity. Low, homogenous expression of HIF-1alpha was detected in the tumors of NNK treated mice (40X, scale bar = 25 um). Image collected and cropped by CiteAb from the following publication (<https://molecular-cancer.biomedcentral.com/articles/10.1186/1476-4598-11-4>), licensed under a CC-BY license.



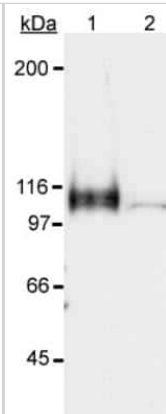
Flow Cytometry: HIF-1 alpha Antibody [NB100-449] - HeLa cells were treated for 15 hrs with 200 uM CoCl₂, fixed in PFA, and permeabilized in 90% MeOH. 1 X 10⁶ cells were stained with 0.125 ug anti-HIF-1 alpha and secondary FITC-conjugated goat anti-rabbit (in a 150 uL reaction). Black: treated, anti-KLH control IgG; Red: untreated, anti-HIF-1 alpha; Blue: treated, anti-HIF-1 alpha.



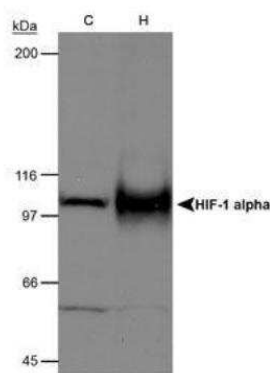
Western Blot: HIF-1 alpha Antibody [NB100-449] - Analysis of HIF-1 alpha in human myeloma cell lysate using anti-HIF-1 alpha. Cells were untreated or treated with IGF-1, IL-6 or CoCl₂. Image from verified customer review.



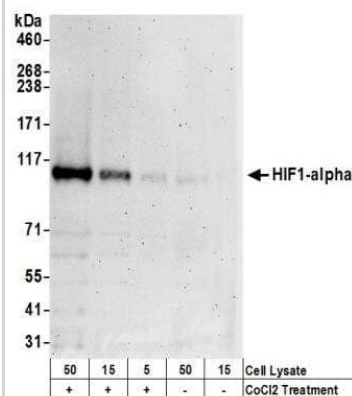
Western Blot: HIF-1 alpha Antibody [NB100-449] - Detection of HIF-1 alpha in a hypoxic sample. Lane 1: CoCl₂ treated Cos-7 nuclear extract (hypoxic). Lane 2: Untreated Cos-7 nuclear extract (normoxic).



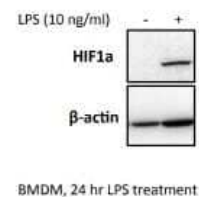
Western Blot: HIF-1 alpha Antibody [NB100-449] - Detection of mouse HIF-1 alpha on hypoxia treated MEFs



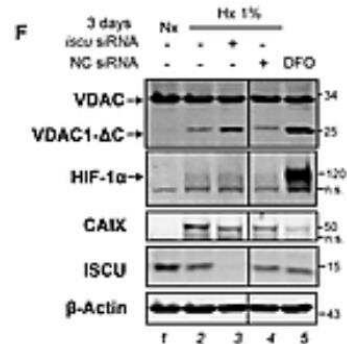
Western Blot: HIF-1 alpha Antibody [NB100-449] - Samples: Whole cell lysate (5, 15 and 50 ug) from HeLa cells that were treated with cobalt chloride (+; 200 uM) or mock treated (-). Antibodies: Affinity purified rabbit anti-HIF1 alpha antibody NB100-449 used for WB at 0.1 ug/ml. Detection: Chemiluminescence with exposure times of 30 seconds.



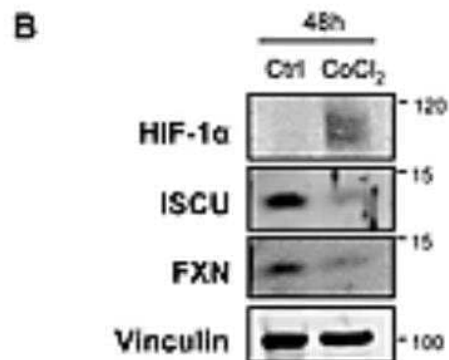
Western Blot: HIF-1 alpha Antibody [NB100-449] - BMDM were seeded at 0.5×10^6 overnight. Cells were treated with 10 ng/ml LPS for 24 hrs. Image from verified customer review.



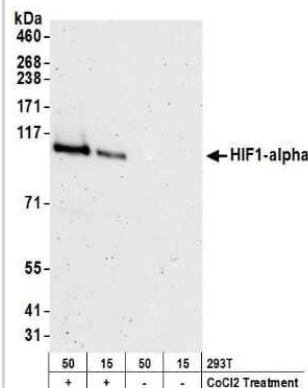
Western Blot: HIF-1 alpha Antibody [NB100-449] - Analysis of total protein using anti-HIF-1 alpha, -CAIX, -ISCU antibodies and VDACs antibody (PMID: 29596470).



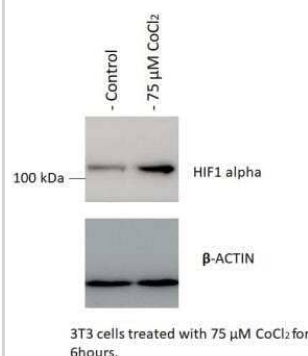
Western Blot: HIF-1 alpha Antibody [NB100-449] - Analysis of total protein using anti-HIF-1 alpha, -ISCU, -FXN antibodies. CoCl₂ was used to treat or not HeLa cells for 2 days (PMID: 29596470).



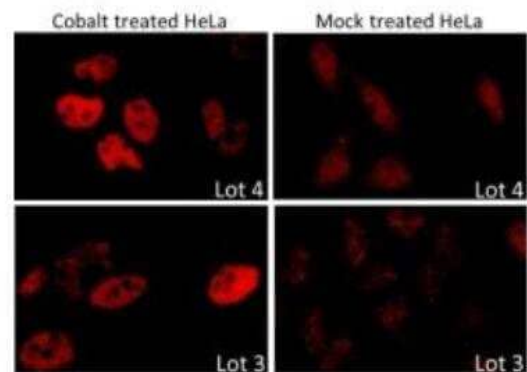
Western Blot: HIF-1 alpha Antibody [NB100-449] - Detection of human HIF1 alpha by western blot. Samples: Whole cell lysate (15 and 50 ug) from HEK293T cells that were either treated with 200 uM cobalt chloride (+) or mock treated (-). Antibodies: Affinity purified rabbit anti-HIF1 alpha antibody NB100-449 used for WB at 0.1 ug/ml. Detection: Chemiluminescence with exposure times of 3 minutes.



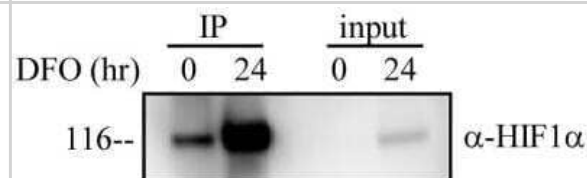
Western Blot: HIF-1 alpha Antibody [NB100-449] - 3T3-L1 mouse embryonic fibroblast adipose-like cell line. Antibody at 1:2000. WB image submitted by a verified customer review.



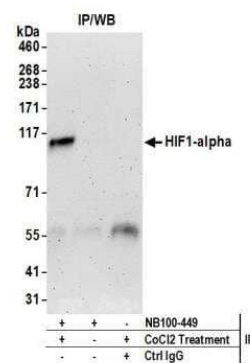
Immunocytochemistry/Immunofluorescence: HIF-1 alpha Antibody [NB100-449] - Formaldehyde-fixed asynchronous HeLa cells.



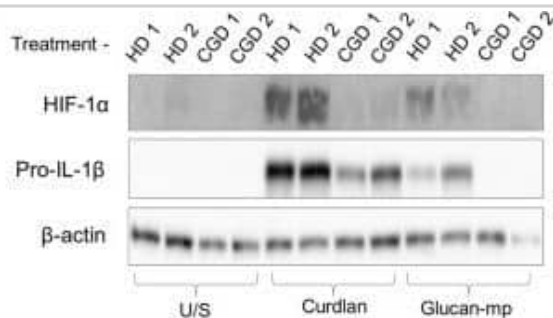
Immunoprecipitation: HIF-1 alpha Antibody [NB100-449] - HIF-1 alpha analysis in HEK293 cells. Image from verified customer review.



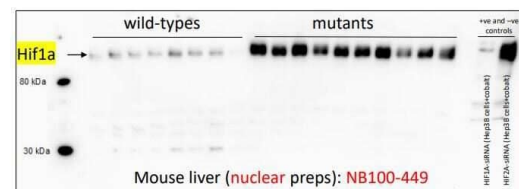
Immunoprecipitation: HIF-1 alpha Antibody [NB100-449] - Detection of human HIF1 alpha by western blot of immunoprecipitates. Samples: Whole cell lysate (1 mg for IP, 20% of IP loaded) from HEK293T cells that were treated with 200 uM cobalt chloride. Antibodies: Affinity purified rabbit anti-HIF1 alpha antibody NB100-449 used for WB at 1 ug/ml and for IP at 6 ug/mg lysate. Detection: Chemiluminescence with exposure times of 3 minutes.



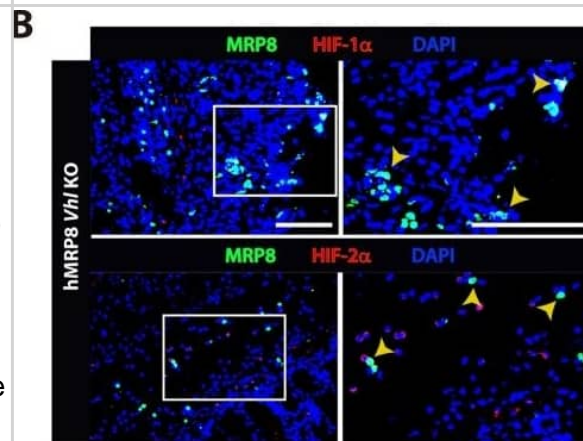
β -Glucan size affects the requirement for reactive oxygen species (ROS) in IL-1 β induction.(B) Human mDCs from healthy donors or chronic granulomatous disease (CGD) patients were stimulated with curdlan or glucan-mp for 8 h. HIF-1 α and pro-IL-1 β protein expression measured by immunoblot (n = 2 donors).



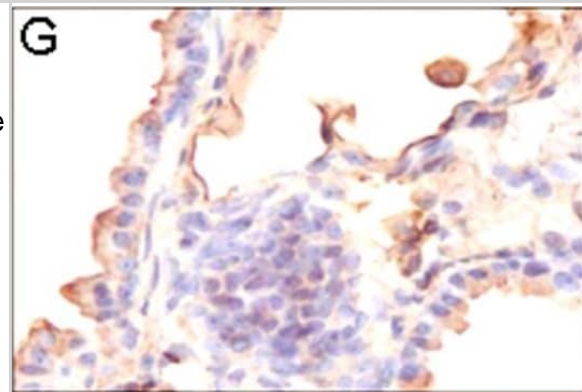
Western Blot: Rabbit Polyclonal HIF-1 alpha Antibody - Analysis of HIF-1 alpha antibody on mouse liver nuclear extracts. Image from a verified customer review.



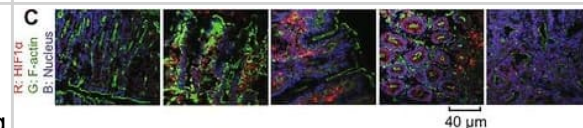
HIF-1α/2α expression in myeloid-specific KO mice targeting the HIF pathway. (A) Images of the colon of wild-type (WT), myeloid-specific Hif-1a KO (hMRP8 Hif-1a KO) or von Hippel Lindau (Vhl) KO (hMRP8 Vhl KO) mice, immunostained for MRP8 (green) & the DNA-binding regions of Hif-1a mRNA (red). Mice were fed with 5% DSS for 4 days prior to immunostaining analyses. Note that there were no MRP8-positive cells that were positive for Hif-1a mRNA in hMRP8 Hif-1a KO (middle column) mice, but we observed many cells that were double positive for MRP8 & Hif-1a mRNA in hMRP8 Vhl KO mice (right column). (B) Images of the colon of hMRP8 Vhl KO mice fed with 5% DSS as in A, immunostained for MRP8 (green) & HIF-1α (red, upper row) or HIF-2α (red, bottom row). DAPI-stained nuclei are shown in blue. White boxes in A & B indicate the regions magnified in the lower or right images, respectively. Yellow arrowheads in A & B indicate cells positive for both markers. Scale bars: 100 μm. Image collected & cropped by CiteAb from the following publication (<https://pubmed.ncbi.nlm.nih.gov/29967068>), licensed under a CC-BY license. Not internally tested by Novus Biologicals.



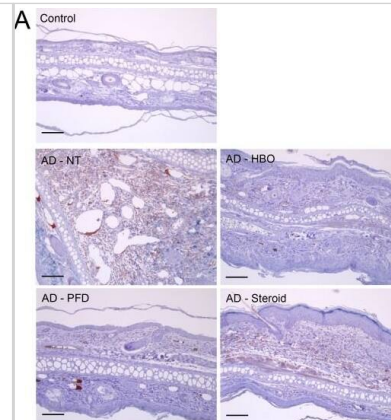
Immunohistochemistry: HIF-1 alpha Antibody [NB100-449] - Analysis of microvascular density & HIF-1α activity. Microvascular density of pulmonary tumors was significantly higher in hyperplastic (B) & tumoral lesions (D) of NNK/NTHi treated mice compared to the NNK treated mice (A, & C) detected by CD105 immunostaining (10X, scale bar = 100 μm). HIF-1α immunostaining after NNK/NTHi combined treatment showed hot-spots of high stromal expression in tumors (F), & high expression in perivascular-peribronchiolar lymphocytes (H). In contrast, low, homogenous expression of HIF-1α was detected in the tumors (E) & perivascular-peribronchiolar lymphocytes (G) of NNK treated mice (40X, scale bar = 25 μm). Image collected & cropped by CiteAb from the following publication (<https://molecular-cancer.biomedcentral.com/articles/10.1186/1476-4598-11-4>), licensed under a CC-BY license. Not internally tested by Novus Biologicals.



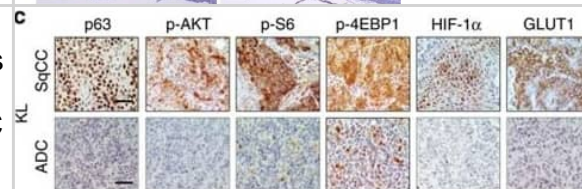
Immunocytochemistry/ Immunofluorescence: HIF-1 alpha Antibody [NB100-449] - Chronic ethanol feeding enhances tumorigenesis markers during AOM/DSS-induced tumorigenesis. AOM/DSS-induced colonic tumorigenesis was induced with (EF) or without (PF) 4 % ethanol feeding as described in Methods section. Cryosections of distal colon were stained for VEGF (a) pSmad (b), or HIF1α (c), & co-stained for F-actin & nucleus. Images presented are representative of n of 5 for each group. Image collected & cropped by CiteAb from the following publication (<https://pubmed.ncbi.nlm.nih.gov/26951793>), licensed under a CC-BY license. Not internally tested by Novus Biologicals.



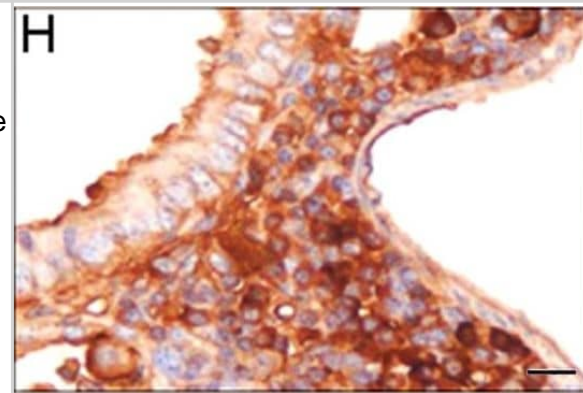
Immunohistochemistry-Paraffin: HIF-1 alpha Antibody [NB100-449] - Treatment with HBOT or PFD decreased HIF-1 α expression in the AD lesions. IHC for HIF-1 α (A). Scale bar is 100 μ m. HIF-1 α + area was measured in five fields chosen at random by using image analysis software (B). RT-PCR for HIF-1 α (C). NT, not treated. Data are expressed as the mean \pm SD (n=12). *P<0.05, compared with the control group; ††P<0.05, compared with the AD-NT group; §, P<0.05, compared with the AD-Steroid group. Image collected & cropped by CiteAb from the following publication (<https://pubmed.ncbi.nlm.nih.gov/25275529>), licensed under a CC-BY license. Not internally tested by Novus Biologicals.



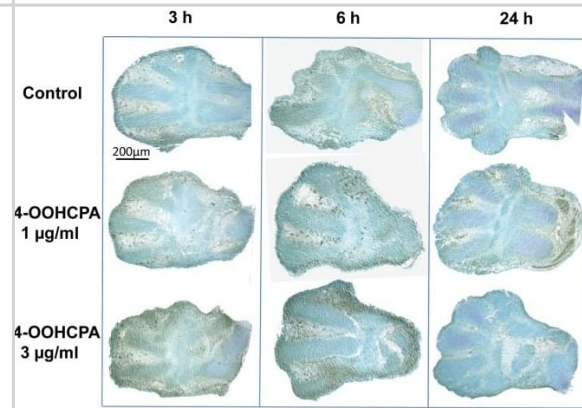
Immunohistochemistry-Paraffin: HIF-1 alpha Antibody [NB100-449] - Elevated PIK3/AKT/HIF-1 α pathways in KL SqCC tumours. (a,b) Analysis of TCGA gene expression (normalized TPM) & PIK3CA (a) & PTEN (b) genomic copy number alteration profiles. Each dot represents one SqCC patient (n=501). Boxes represent the interquartile range & whiskers are drawn to the minimum & maximum. Kruskal-Wallis non-parametric ANOVA, ****P<0.0001, ***P<0.001, **P<0.01. (c) IHC analysis (top) & quantification (bottom) of p63, p-AKT, p-S6, p-4EBP1, HIF-1 α & GLUT1 in KL tumours (n=6 each group). Two-tailed t-test, ****P<0.0001, ***P<0.001, **P<0.01. Scale bar, 50 μ m. (d) Immunoblot analysis of HIF-1 α & GLUT1 in control shGFP & shHIF-1 α knockdown SqCC cell lines, HCC95 & HCC1588. All error bars represent the mean \pm s.e.m. Image collected & cropped by CiteAb from the following publication (<https://pubmed.ncbi.nlm.nih.gov/28548087>), licensed under a CC-BY license. Not internally tested by Novus Biologicals.



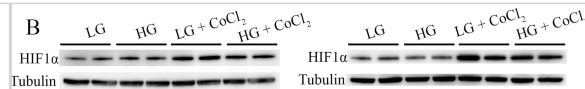
Immunohistochemistry: HIF-1 alpha Antibody [NB100-449] - Analysis of microvascular density & HIF-1 α activity. Microvascular density of pulmonary tumors was significantly higher in hyperplastic (B) & tumoral lesions (D) of NNK/NTHi treated mice compared to the NNK treated mice (A, & C) detected by CD105 immunostaining (10X, scale bar = 100 μ m). HIF-1 α immunostaining after NNK/NTHi combined treatment showed hot-spots of high stromal expression in tumors (F), & high expression in perivascular-peribronchiolar lymphocytes (H). In contrast, low, homogenous expression of HIF-1 α was detected in the tumors (E) & perivascular-peribronchiolar lymphocytes (G) of NNK treated mice (40X, scale bar = 25 μ m). Image collected & cropped by CiteAb from the following publication (<https://molecular-cancer.biomedcentral.com/articles/10.1186/1476-4598-11-4>), licensed under a CC-BY license. Not internally tested by Novus Biologicals.



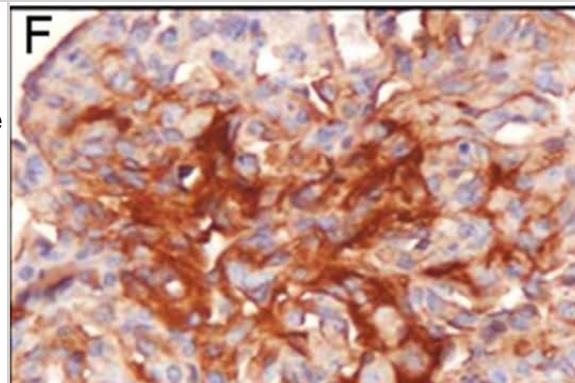
Immunohistochemistry: HIF-1 alpha Antibody [NB100-449] - Immunolocalization of HIF1A in limbs. Immunoreactivity was detected in control limbs in the apical ectodermal ridge & interdigital regions (I.R.). The mesenchymal condensations/developing cartilaginous anlagen (Digits) were not immunoreactive. 4-OOHCPA treatment resulted in a concentration- & time-dependent increase in HIF1A immunoreactivity in this area in the 3 & 6 h exposure groups; staining was diminished by 24 h. Four separate replicates were done. Image collected & cropped by CiteAb from the following publication (<https://dx.plos.org/10.1371/journal.pone.0051937>), licensed under a CC-BY license. Not internally tested by Novus Biologicals.



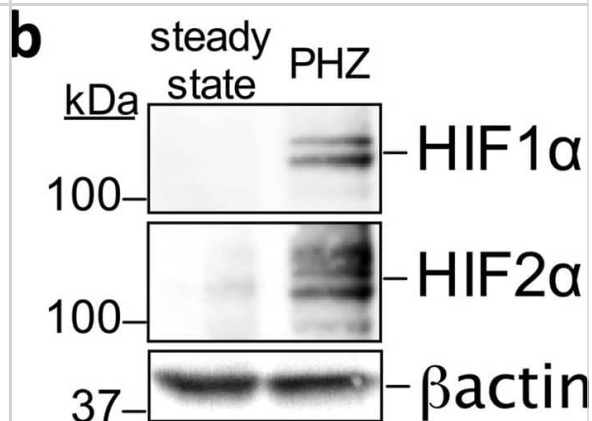
Western Blot: HIF-1 alpha Antibody [NB100-449] - Effects of cell stress on VEGF-A & HIF1 α expression in Müller cells & Y79 photoreceptors. (A) VEGF-A was measured by ELISA using conditioned media collected from MIO-M1 & Y79 cells, $n = 4-5$ /group in Müller cells & $n = 8$ /group in Y79 photoreceptors, $** p < 0.01$; (B) Western blots for HIF1 α using cellular proteins, $n = 4$ /group, $** p < 0.01$. For MIO-M1 Müller cells: Grey bars: 5 mM glucose. Black bars: 25 mM glucose. For Y79 photoreceptors: Grey bars: 11 mM glucose. Black bars: 25 mM glucose. NS, not significant; LG, low glucose; HG, high glucose. Image collected & cropped by CiteAb from the following publication (<http://www.mdpi.com/1422-0067/18/3/533>), licensed under a CC-BY license. Not internally tested by Novus Biologicals.



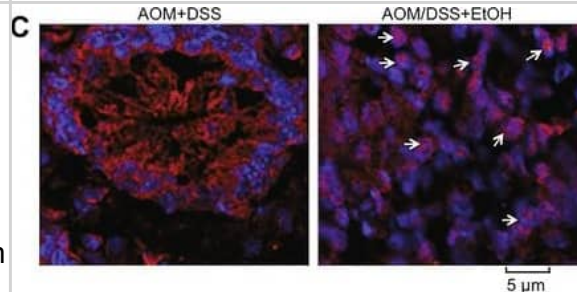
Immunohistochemistry: HIF-1 alpha Antibody [NB100-449] - Analysis of microvascular density & HIF-1 α activity. Microvascular density of pulmonary tumors was significantly higher in hyperplastic (B) & tumoral lesions (D) of NNK/NTHi treated mice compared to the NNK treated mice (A, & C) detected by CD105 immunostaining (10X, scale bar = 100 μ m). HIF-1 α immunostaining after NNK/NTHi combined treatment showed hot-spots of high stromal expression in tumors (F), & high expression in perivascular-peribronchiolar lymphocytes (H). In contrast, low, homogenous expression of HIF-1 α was detected in the tumors (E) & perivascular-peribronchiolar lymphocytes (G) of NNK treated mice (40X, scale bar = 25 μ m). Image collected & cropped by CiteAb from the following publication (<https://molecular-cancer.biomedcentral.com/articles/10.1186/1476-4598-11-4>), licensed under a CC-BY license. Not internally tested by Novus Biologicals.



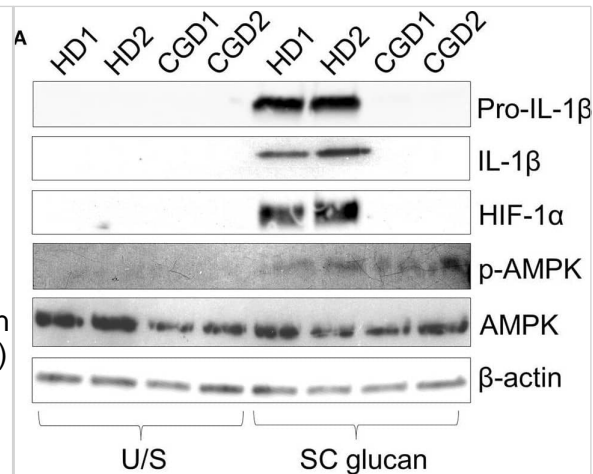
Western Blot: HIF-1 alpha Antibody [NB100-449] - Phenylhydrazine administration results in hypoxia in retinal vessels & in HIF-1 α & HIF-2 α stabilization in peripheral blood leukocytes. (A) 3-dimensional reconstructed imaging of the superficial vascular plexus of flat mounted retinæ of mice (steady state, treated with PHZ & treated with PHZ & peak EIU induction) stained with DAPI, hypoxyprobe & Isolectin B4. (B) Representative analysis of HIFs by western blot: 50ug of protein from total cell lysate of blood leukocytes isolated from mice treated with PHZ compared to untreated; (C) relative densitometry quantification of HIF western blots from PBMC showing mean, $n = 3$, error bar showing SD, unpaired t test, $***P < 0.001$. Image collected & cropped by CiteAb from the following publication (<https://pubmed.ncbi.nlm.nih.gov/28112274>), licensed under a CC-BY license. Not internally tested by Novus Biologicals.



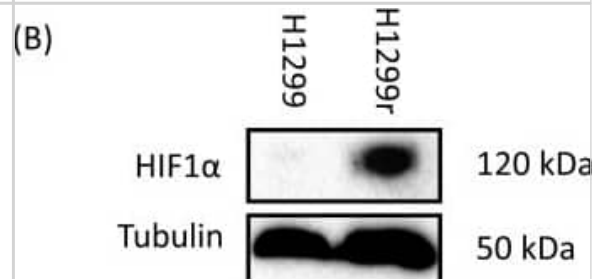
Immunohistochemistry-Frozen: HIF-1 alpha Antibody [NB100-449] - Ethanol elevates tumorigenic markers & nuclear localization of HIF1 α in colonic crypts during AOM/DSS-induced tumorigenesis: AOM/DSS-induced colonic tumorigenesis was induced with or without 4 % ethanol feeding as described in Methods section. a & b Colonic mucosal extracts were immunoblotted for pSmad & VEGF (a), & the band density evaluated using Image J software (b). Values are mean \pm SE ($n = 3$). Asterisks indicate the values that are significantly different ($p < 0.05$) from corresponding values for AOM/DSS group. c Cryosections of colon were stained for HIF1 α (red) & nucleus (blue). Sections of the images from Fig. 2c are enlarged to show the detailed localization of HIF1 α in the nucleus. While arrows indicate nuclear co-localization of HIF1 α Image collected & cropped by CiteAb from the following publication (<https://pubmed.ncbi.nlm.nih.gov/26951793>), licensed under a CC-BY license. Not internally tested by Novus Biologicals.



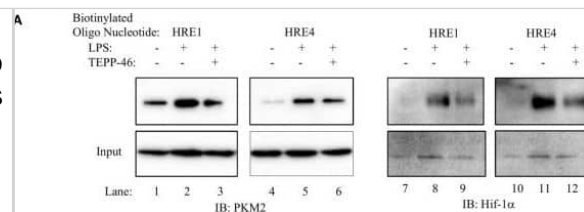
Western Blot: HIF-1 alpha Antibody [NB100-449] - Dectin-1-induced NADPH oxidase-derived ROS is required for augmented IL-1 β during TSLPR inhibition. (A) Human mDC derived from healthy donors (HD) or CGD patients were stimulated with SC glucan for 8 h (n = 2 representative donors presented, three separate experiments performed). Pro-IL-1 β , IL-1 β , HIF-1 α , phospho-AMPK, AMPK & β -actin were measured by immunoblot. (B–E) Densitometry of cumulative data was performed using Image Studio Lite software with pro-IL-1 β , IL-1 β & HIF-1 α normalized to β -actin & phospho-AMPK normalized to total AMPK. Data is reported as percentage of maximal signal observed within each donor (n = 3 independent donors, presented as pooled data). (F–H) Human mDC derived from HD or CGD patients were stimulated with SC glucan, CA glucan or heat killed *C. albicans* hyphae with anti-TSLPR or IgG isotype control antibodies for 24 h (n = 3 independent donors, presented as pooled data). IL-1 β was measured in 24-h cell culture supernatants by ELISA. Cumulative data displayed as mean +SEM. Statistical analysis calculated using one-way ANOVA with Bonferroni post-tests (**p = 0.001, *p = 0.05). Image collected & cropped by CiteAb from the following publication (<https://pubmed.ncbi.nlm.nih.gov/31139177>), licensed under a CC-BY license. Not internally tested by Novus Biologicals.



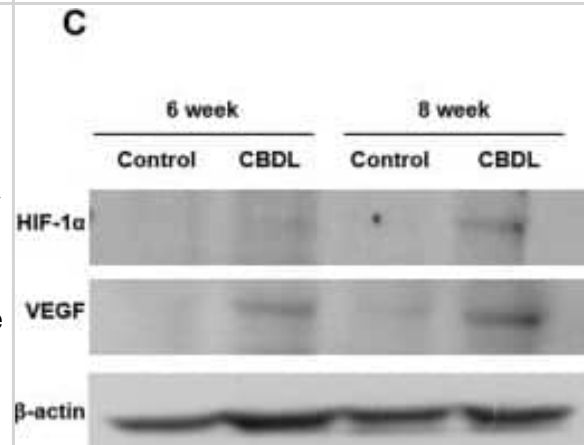
Western Blot: HIF-1 alpha Antibody [NB100-449] - Reactive oxygen species production & expression of stabilized HIF1 α & AMPK subunit α 2 & in H1299 & H1299r cells (A) H1299, H1299r, P31 & P31r cell were seeded at a density of 250,000 cells/well & left for 24 h. The cells were then stained with 10 μ mol/L dichloro-dihydro-fluorescein diacetate (DCFH-DA). Fluorescence was analysed for 10,000 events. Whole cell lysates were prepared from confluent cultures of H1299, H1299r cells. Proteins (90 μ g) were resolved in 10% SDS-PAGE gels & transferred to a PVDF membrane. (B) Representative blot of HIF1 α protein expression. (C) Representative blot of AMPK subunit α 2 protein expression from four independent experiments. (D) Bar chart of AMPK subunit α 2 mean for four separate measurements. Statistical analyses was carried out using the student t-test. ** = p<0.01, * = p<0.05. Image collected & cropped by CiteAb from the following publication (<https://www.oncotarget.com/lookup/doi/10.18632/oncotarget.21885>), licensed under a CC-BY license. Not internally tested by Novus Biologicals.



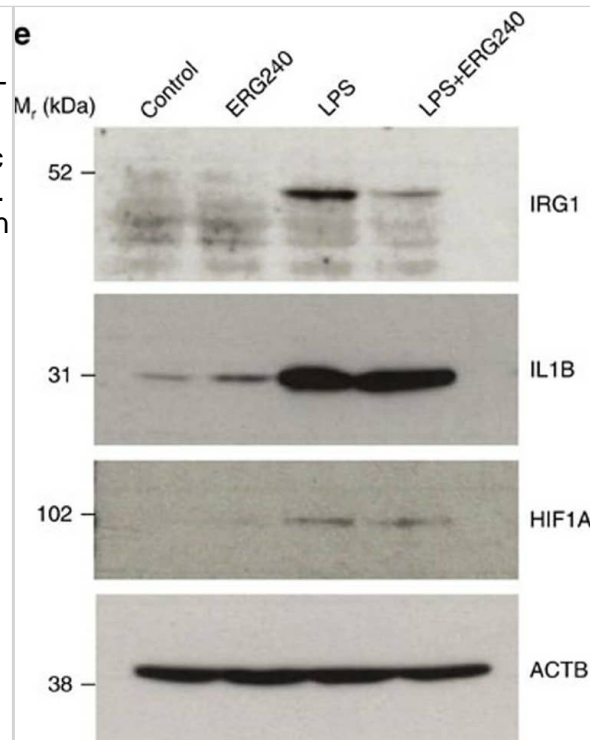
Western Blot: HIF-1 alpha Antibody [NB100-449] - Pyruvate kinase isoform M2 (PKM2) & hypoxia-inducible factor 1 α (Hif-1 α) bind directly to the promoter region of PDL1 in primary murine BMDM cells. BMDM cells were treated with TEPP-46 at 50 μ M for 1 h prior to stimulation with LPS (100 ng/ml, 24 h) (A). Binding of PKM2 (left) or Hif-1 α (right) to HRE1 or HRE4 of the PD-L1 promoter was detected by incubating cell lysates with biotinylated oligonucleotides spanning the relevant HRE promoter region. Protein-oligonucleotide complexes were isolated using streptavidin agarose beads, & proteins were detected by western blotting. Representative of n = 3. Chromatin immunoprecipitation (ChIP)-PCR (B) using PKM2 & HIF-1 α antibodies & primers specific for three promoter regions of PD-L1 (HRE1, 2-3, & 4) & a known Hif-1 α binding region of vascular endothelial growth factor as a positive control showing binding of Hif-1 α (left) & PKM2 (right) to the PD-L1 promoter in LPS-treated BMDMs (100 ng/ml, 24 h). (C) Sequential ChIP assays measuring simultaneous endogenous binding of PKM2 & Hif-1 α to chromatin in response to LPS (100 ng/ml, 24 h) \pm TEPP-46 (pretreatment using 50 μ M, 60 min). ChIP data are calculated as percent of input, error bar represents mean \pm SEM, & statistics are performed as two-tailed unpaired t-test *P < 0.05, **P < 0.01, & ***P < 0.001. Image collected & cropped by CiteAb from the following publication (<https://pubmed.ncbi.nlm.nih.gov/29081778>), licensed under a CC-BY license. Not internally tested by Novus Biologicals.



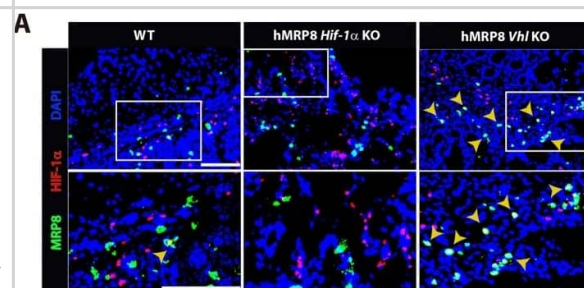
Western Blot: HIF-1 alpha Antibody [NB100-449] - Changes in Hepatic Oxygen Saturation & Hypoxia-related Protein Expression. (A) In the representative case, the hepatic oxygen saturation in the experimental group was lower than that in the control group at four, six, & eight weeks (51.6 vs. 54.5%, 48.4 vs. 53.9%, 32.3 vs. 43.2%, & 31.2 vs. 42.9%). (B) There was significant decrease of oxygen saturation of liver parenchyma in the experimental group compared to those of control group (45.2 vs. 51.9%, 43.0 vs. 49.0%, & 31.3 vs. 49.7%) at the four, six, & eight weeks, respectively (P < 0.001). (C) In the Western blot analysis, the experimental group was relatively higher expression of hypoxia-inducible factor-1 α (HIF-1 α) & vascular endothelial growth factor (VEGF) protein than the control group at eight weeks. The full-length blots with these antibodies were presented in supplementary Figure S1. (D,E) The experimental group showed significantly higher expression of HIF-1 α & VEGF protein than the control group at eight-week (1.47 ± 0.48 vs. 0.19 ± 0.08 & 0.96 ± 0.23 vs. 0.33 ± 0.06 , P = 0.019 & P < 0.018). *P < 0.05. Image collected & cropped by CiteAb from the following publication (<https://pubmed.ncbi.nlm.nih.gov/29079853>), licensed under a CC-BY license. Not internally tested by Novus Biologicals.



Western Blot: HIF-1 alpha Antibody [NB100-449] - BCAT1 expression & inhibition in human macrophages. (a) RNA-sequencing in human monocyte-derived macrophages (hMDMs) shows mRNA copies of BCAT enzymes in normalized counts. $n=14$ healthy donor hMDMs were used for RNA-seq. (b) Chemical structure of ERG240 & leucine. (c) Enzymatic activity of recombinant human BCAT1 & BCAT2 in presence of ERG240. (d) Relative expression of IRG1, HIF1A & IL1B measured by qRT-PCR in control, ERG240-treated (20 mM, 3 h), LPS treated (100 ng ml⁻¹, 3 h), & LPS+ERG240 treated (LPS, 100 ng ml⁻¹; ERG240, 20 mM for 3 h) hMDMs. ns, non-significant. All expression values are normalized to those obtained for HPRT gene expression. $n=3$ healthy donor hMDMs were used in each group. (e) Western blot analysis of IRG1, IL-1 β , HIF-1 α & beta-actin (ACTB) in control (untreated), ERG240-treated (20 mM, 3 h), LPS treated (100 ng ml⁻¹, 3 h) & LPS+ERG240 treated (LPS, 100 ng ml⁻¹; ERG240, 20 mM for 3 h) hMDMs. The experiment is representative of three independent experiments using $n=3$ healthy donor hMDMs each. (f) GC/MS results showing itaconic acid production in hMDMs in presence or absence of ERG240 (20 mM). LPS treatment was for 8 h (100 ng ml⁻¹). GC/MS plot for each donor is shown separately where itaconate abundance denotes arbitrary units. Error bars are s.e.m. Significance was tested using two-tailed Student's t-test or one-way ANOVA. * $P < 10^{-3}$ following two-way ANOVA. Image collected & cropped by CiteAb from the following publication (<https://www.nature.com/articles/ncomms16040>), licensed under a CC-BY license. Not internally tested by Novus Biologicals.

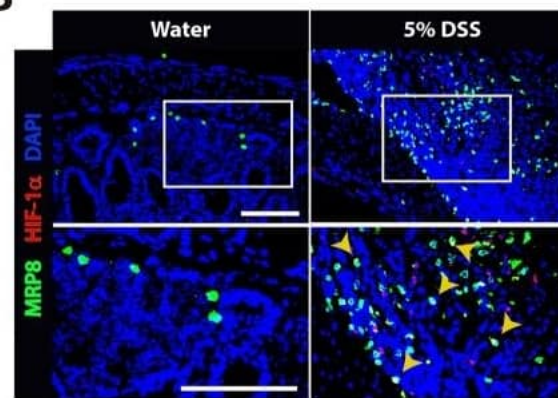


Immunocytochemistry/ Immunofluorescence: HIF-1 alpha Antibody [NB100-449] - HIF-1 α /2 α expression in myeloid-specific KO mice targeting the HIF pathway. (A) Images of the colon of wild-type (WT), myeloid-specific Hif-1a KO (hMRP8 Hif-1a KO) or von Hippel Lindau (Vhl) KO (hMRP8 Vhl KO) mice, immunostained for MRP8 (green) & the DNA-binding regions of Hif-1a mRNA (red). Mice were fed with 5% DSS for 4 days prior to immunostaining analyses. Note that there were no MRP8-positive cells that were positive for Hif-1a mRNA in hMRP8 Hif-1a KO (middle column) mice, but we observed many cells that were double positive for MRP8 & Hif-1a mRNA in hMRP8 Vhl KO mice (right column). (B) Images of the colon of hMRP8 Vhl KO mice fed with 5% DSS as in A, immunostained for MRP8 (green) & HIF-1 α (red, upper row) or HIF-2 α (red, bottom row). DAPI-stained nuclei are shown in blue. White boxes in A & B indicate the regions magnified in the lower or right images, respectively. Yellow arrowheads in A & B indicate cells positive for both markers. Scale bars: 100 μ m. Image collected & cropped by CiteAb from the following publication (<https://pubmed.ncbi.nlm.nih.gov/29967068>), licensed under a CC-BY license. Not internally tested by Novus Biologicals.



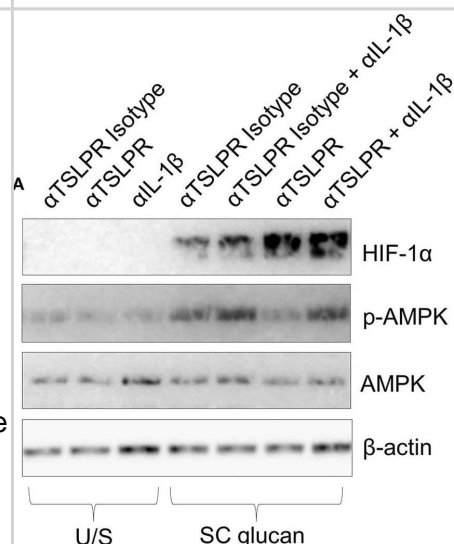
Immunocytochemistry/ Immunofluorescence: HIF-1 alpha Antibody [NB100-449] - Increased infiltration of myeloid cells expressing HIF-1 α in DSS-induced colitis. (A) Western blot analysis of MRP8, F4/80 or actin using the whole colon tissue lysate from mice fed with water or 5% DSS for 4 days. (B) Images of the colon of mice fed with water or 5% DSS, immunostained for myeloid cells using anti-MRP8 (green) or anti-HIF-1 α (red) antibodies. Nuclei were counterstained with DAPI. White rectangles indicate the areas magnified in the images shown below. Yellow arrowheads indicate cells with colocalization of MRP8 & HIF-1 α . Quantification of MRP8-positive cells & percentage of those expressing HIF-1 α are shown as bar graphs on the right-hand side. Data are mean \pm s.e.m. for at least three independent fields examined per mouse ($n \geq 3$ per group). ** $P < 0.01$ & *** $P < 0.001$, assessed by Student's t-test. HPF, high-powered field. (C) Images of the colon of mice fed with 5% DSS, immunostained for MRP8 (red) & CD11b (green). DAPI-stained nuclei are shown in blue & a merged image is also shown. Scale bars: 100 μ m. Image collected & cropped by CiteAb from the following publication (<https://pubmed.ncbi.nlm.nih.gov/29967068>), licensed under a CC-BY license. Not internally tested by Novus Biologicals.

B

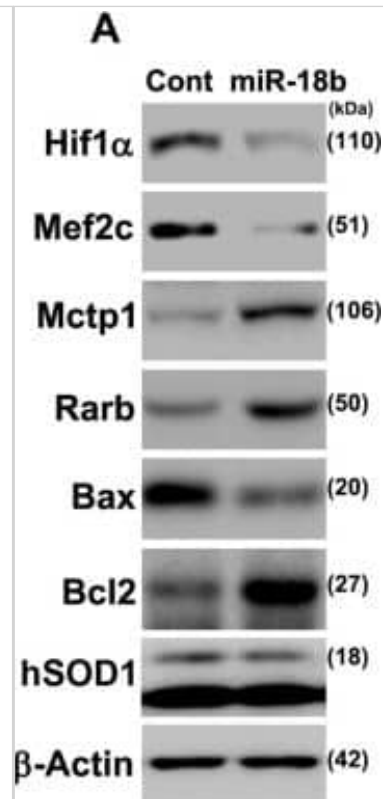


Western Blot: HIF-1 alpha Antibody [NB100-449] - Increased HIF-1 α expression is regulated by TSLPR inhibition & not IL-1 β secretion (A) Human mDC were stimulated with SC glucan with either anti-TSLPR or IgG isotype control antibodies for 8 h in the presence or absence of IL-1 β neutralization antibodies ($n = 1$ representative donor presented, three separate experiments performed). Pro-IL-1 β , IL-1 β , HIF-1 α , phospho-p38 MAPK, p38 MAPK, phospho-AMPK, AMPK & β -actin were measured by immunoblot. (B,C) Densitometry of cumulative data was performed using Image Studio Lite software with HIF-1 α normalized to β -actin & phospho-AMPK normalized to AMPK. Data is reported as percentage of maximal signal observed within each donor ($n = 3$ independent donors, presented as pooled data). Cumulative data displayed as mean \pm SEM. Image collected & cropped by CiteAb from the following publication (<https://pubmed.ncbi.nlm.nih.gov/31139177>), licensed under a CC-BY license. Not internally tested by Novus Biologicals.

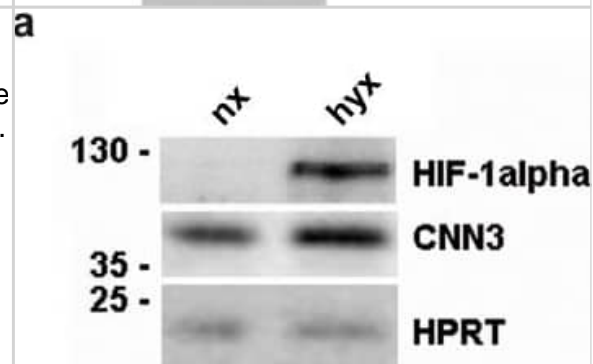
A



Western Blot: HIF-1 alpha Antibody [NB100-449] - miR-18b (miR-18b-5p) regulates Hif1 α & reduces apoptosis in mtNSC-34 cells. a Overexpressed miR-18b (miR-18b-5p) decreased Hif1 α & Mef2c proteins. Both Mctp1 & Rarb expression were increased by miR-18b (miR-18b-5p). Downregulated Bax & upregulated Bcl2 by miR-18b (miR-18b-5p) diminished apoptosis in mtNSC-34 cells. b RT-qPCR analysis showed low expression of Hif1 α & Mef2c mRNAs. c Mctp1 & Rarb transcripts were highly expressed by miR-18b (miR-18b-5p). d Bax mRNAs were decreased & Bcl2 mRNAs were increased by overexpressed miR-18b. e miR-18b (miR-18b-5p) was overexpressed in mtNSC-34 cells. f miR-206 was reduced by miR-18b (miR-18b-5p). g LDH release analysis explained that transfected miR-18b (miR-18b-5p) restores apoptosis. h Luciferases assay with 3' UTR of Hif1 α showed that Hif1 α is target of miR-18b in contNSC-34 cells. i & j Overexpression of miR-18b (miR-18b-5p) enhanced neuronal differentiation (MAP2) & attenuated intracellular Ca²⁺ levels (Cont (0.098) versus miR-18b (miR-18b-5p) (0.051) in fluorescence intensities from baseline 490/525 ratio) in mtNSC-34 cells. Empty vector served as a negative control (Cont). Arrow represents SOD1 aggregation (green). Scale bar, 40 μ m. Significantly different at *, $p < 0.05$; **, $p < 0.005$. The experiments were replicated 5 times Image collected & cropped by CiteAb from the following publication (<https://pubmed.ncbi.nlm.nih.gov/32605607>), licensed under a CC-BY license. Not internally tested by Novus Biologicals.



Western Blot: HIF-1 alpha Antibody [NB100-449] - Hypoxic conditions upregulate CNN3 in BeWo cells. BeWo cells were cultured either under normoxic or under hypoxic conditions for 24(A) Total protein lysates were examined with the Western Blot technique to detect CNN3 protein levels. For normalization, HPRT was stained on the same membrane. As hypoxia marker, HIF-1 alpha was detected as well. (B) Protein bands of CNN3 & HPRT were densitometrically measured on the Western Blot membrane & CNN3/HPRT levels are plotted in the graph (white column: normoxia; black column: hypoxia). $n=3$. (C) BeWo cells were serum starved for 16 h & then treated with either PBS as control or 200 μ M CoCl₂ for 6 h in serum free medium. Then total protein was isolated & a Western Blot was performed. The HIF-1 alpha, CNN3 & HPRT protein was detected on the membrane with specific antibodies. (D) A densitometric analysis was performed to determine CNN3/HPRT levels (white column: normoxia; black column: hypoxia). $n=3$. Image collected & cropped by CiteAb from the following publication (<https://pubmed.ncbi.nlm.nih.gov/25050546>), licensed under a CC-BY license. Not internally tested by Novus Biologicals.

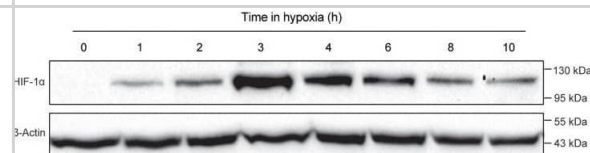
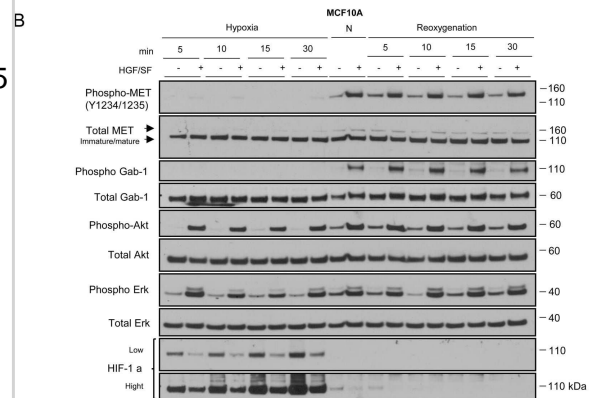
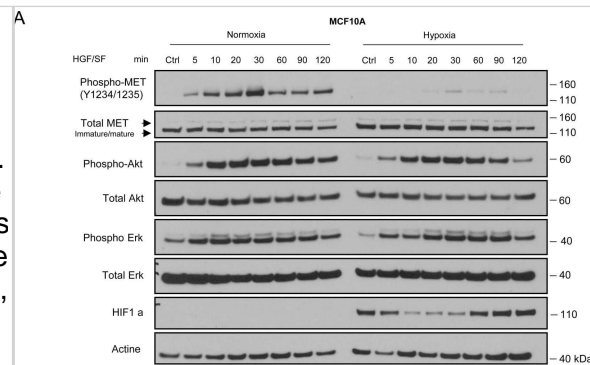


Western Blot: HIF-1 alpha Antibody [NB100-449] - Dynamics of the hypoxia-triggered decrease in MET phosphorylation & its reversal upon reoxygenation(A) MCF10A cells were incubated under normoxia or hypoxia for 1 h. They were then treated, under the same oxygen pressure, with 10 ng/mL HGF/SF for 5, 10, 20, 30, 60, 90 & 120 minutes. A control (Ctrl) without any HGF/SF stimulation was also performed. The same amount of protein was analyzed by western blotting with antibodies directed against: phosphorylated residues in the MET kinase domain, the MET kinase domain, the hypoxia marker HIF1a, phosphorylated Akt, Akt, Erk2, phosphorylated Erk, & actine. The positions of prestained molecular weight markers are indicated. Arrows indicate the positions of precursor & mature full-length MET. (B) MCF10A cells were incubated under hypoxia for 5, 10, 15 or 30 minutes. Another set of cells were incubated under hypoxia for 1 h & then returned to normoxia for 5, 10, 15 or 30 min (re-oxygenation). A control under normoxic (N) conditions was also included. The same amount of protein was analyzed by western blotting as previously described with the addition of GAB1 & its phosphorylated form. (C) MCF10A cells were placed under normoxic or hypoxic conditions for 1 h or hypoxia for 1 h & then normoxia for 10 minutes (reoxygenation). Cells were then treated at the indicated time with 10 ng/mL of HGF/SF. Cell lysates were incubated for AlphaScreen specific phospho-Erk & phospho-Akt quantitation. Error bars represent standard deviations (n = 3; \pm SD). Image collected & cropped by CiteAb from the following publication

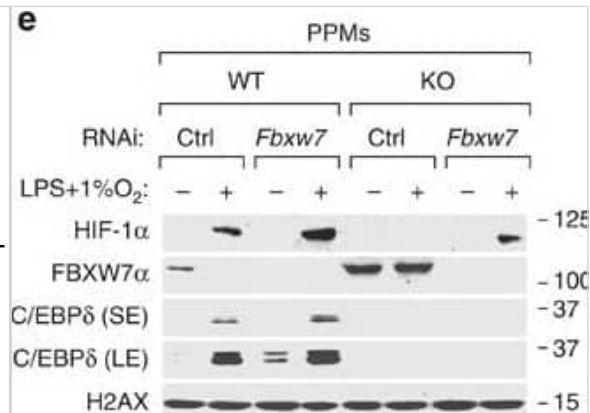
(<https://pubmed.ncbi.nlm.nih.gov/29930749>), licensed under a CC-BY license. Not internally tested by Novus Biologicals.

Western Blot: HIF-1 alpha Antibody [NB100-449] - The role of HIF-1 in purinosome formation.a, quantifying the number of purinosome-containing cells in normoxia or hypoxia (24 h) in purine-rich medium & normoxia in purine-depleted medium (purine -ve), cells in hypoxia transfected with siRNA to HIF-1 α (+ siRNA), & cells in purine-rich medium supplemented with DFX. Data shown are n = 3, mean \pm S.E., total number of cells counted are shown in parentheses. b, time course of purinosome formation in hypoxia shows the number of purinosome-containing cells steadily increases after 3 h in hypoxia. Re-oxygenation of the samples after hypoxic incubation for 10 h reverts the number purinosome-containing cells back to normoxic levels. Data shown is n = 3, mean \pm S.E., total number of cells counted are shown in parentheses. c, time course of HIF-1 α stabilization in hypoxia shows maximum HIF-1 α protein expression levels at 3 h in hypoxia, after which the HIF-1 α expression decreases. The positions of molecular markers are shown for each blot; uncropped blots with overlaid markers are deposited in the raw data files. d, the effect of hypoxia on the transcription of purine biosynthesis enzymes measured by qPCR. Vascular endothelial growth factor (VEGF) & HIF-1 α are controls. Data shown are n = 5, mean \pm S.E. e, the effect of hypoxia on the protein expression levels of the purine biosynthetic enzymes. HIF-1 α is stabilized in hypoxia as expected, & no significant increase in the purine enzymes was detected between normoxic (21% oxygen) & hypoxic (1% oxygen) growth conditions. The positions of molecular markers surrounding each band of interest are shown for each blot; uncropped blots with overlaid markers are deposited in the raw data files. Image collected & cropped by CiteAb from the following publication

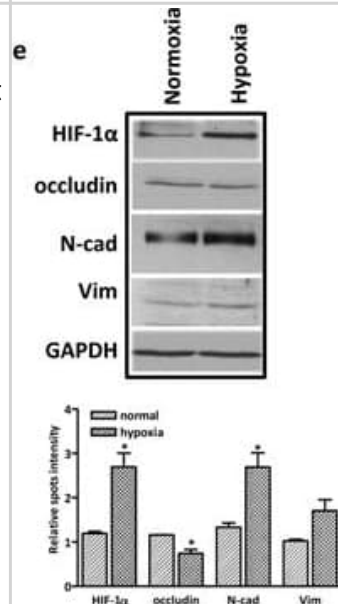
(<https://pubmed.ncbi.nlm.nih.gov/32439803>), licensed under a CC-BY license. Not internally tested by Novus Biologicals.



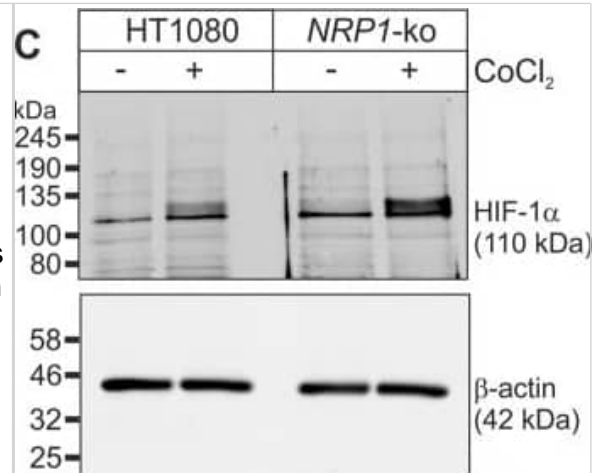
Western Blot: HIF-1 alpha Antibody [NB100-449] - C/EBP δ promotes HIF-1 α expression in macrophages through inhibition of FBXW7 α) RT-PCR analysis of FBXW7 isoform expression from different sources as follows. 1, primary peritoneal macrophages (PPMs); 2, RAW 264.7 cells; 3, MMTV-Neu mammary tumour tissue; 4, primary mouse embryo fibroblasts. Numbers indicate the position of size markers in base pairs. (b) RT-qPCR analysis of Fbxw7 transcript levels in PPMs from WT & Cebp δ ^{-/-} KO mice, cultured +/- LPS (100 ng/ml, 24 h), compared to WT untreated (n=4, *P<0.05; **P<0.001). (c) Western analysis of nuclear extract (NE) from primary human monocytes nucleofected with siRNA oligos (C, control; D, CEBPD; F, FBXW7) & treated with LPS (100 ng/ml) & 1%O₂ (16 h) as indicated. SE, short exposure; LE, long exposure. (d) RT-qPCR analysis of FBXW7 & CEBPD transcripts in primary human monocytes as in panel (c) (n=3, *P<0.05; **P<0.001). (e) Western analysis of NE from PPMs nucleofected with siRNA oligos & treated with LPS (100 ng/ml) & 1%O₂ for 16 h as indicated. SE, short exposure; LE, long exposure. Where applicable, data are mean \pm S.E.M., evaluated by two-tailed unequal variance t-test. Image collected & cropped by CiteAb from the following publication (<https://pubmed.ncbi.nlm.nih.gov/23575666>), licensed under a CC-BY license. Not internally tested by Novus Biologicals.



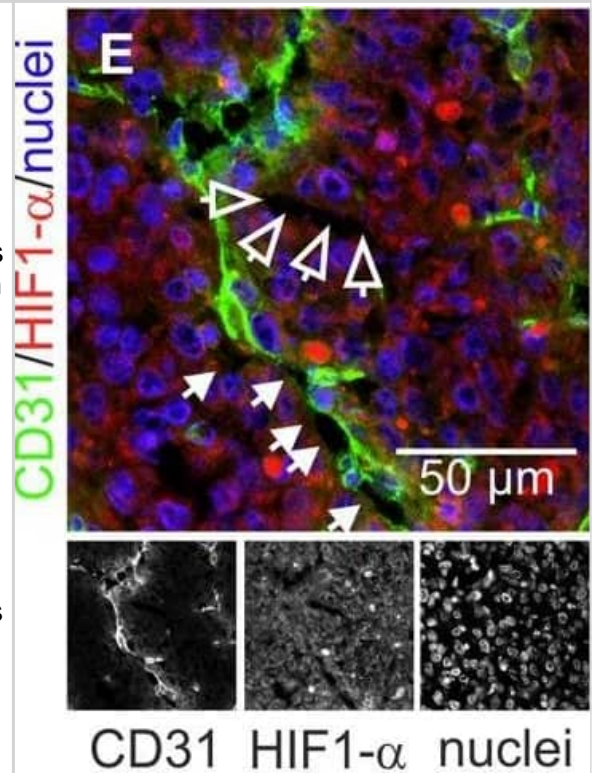
Western Blot: HIF-1 alpha Antibody [NB100-449] - Hypoxia downregulates CFTR expression. (a) Phase-contrast photographs of MDCK cells treated with normoxia & hypoxia conditions; (b) Western blot showing downregulation of CFTR in the MDCK cells by hypoxia (Full-length blot is shown in Supplementary Figure S7b.); (c) Real time-PCR assay showing decreased mRNA expression of CFTR induced by hypoxia in HK-2 cells, *p < 0.05; (d) Western blot showing decreased expression of CFTR induced by hypoxia in HK-2 cells (Full-length blot is shown in Supplementary Figure S7c.); (e) Western blot showing the expression changes of HIF-1 α & EMT markers induced by hypoxia in MDCK cells, quantification analysis is shown in the lower panel, *p < 0.05; (Full-length blot is shown in Supplementary Figure S7d.) (f) Immunofluorescent staining showing dramatically increased HIF-1 α & reduced CFTR protein levels in tubular epithelial cells at inner cortices in UO kidney (arrow). Image collected & cropped by CiteAb from the following publication (<https://pubmed.ncbi.nlm.nih.gov/28701694>), licensed under a CC-BY license. Not internally tested by Novus Biologicals.



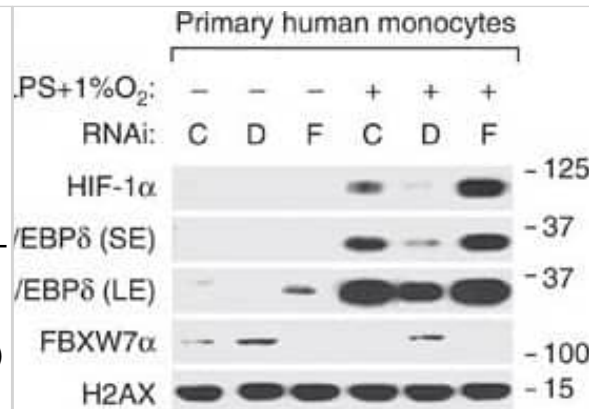
Western Blot: HIF-1 alpha Antibody [NB100-449] - NRP1 & MET on HT1080 cells are accessible for blood-borne rhodocetin- $\alpha\beta$ (A) expression of NRP1 & MET by HT1080 cells was proven by flow cytometry. Gray, isotype-matched controls. (B) flow cytometry of NRP1-knockout HT1080 cells demonstrating their NRP1-deficiency & unaffected MET expression. (C) treatment with CoCl₂, mimicking a hypoxic tumor micro-environment, induced upregulation of HIF-1 α . (D) NRP1, as a downstream target of HIF-1 α , is upregulated in HT1080 cells but not in NRP1-knockout HT1080 cells. β -actin immunoblots show even loading. (E) increased HIF-1 α (red) levels in hypoxic tumor regions, which also contained partly (arrows) or completely (open arrows) EC-deficient VM vessels. ECs are stained green & nuclei blue. (F) immunostaining of NRP1 (red) & MET (blue) showed that both proteins were present on HT1080 cells & ECs in tumor tissue. Note the continuity between EC-lined vasculature & EC marker-deficient vessels (arrows in F'). F', F'', in oblique view, gating of the green CD31 signal also showed an apical absence of NRP1 on ECs in contrast to MET (open arrows). (G) the fluorescence intensity along a traceroute, averaged over a width of 5 pixels, (rectangle in F) through the endothelium revealed that in ECs NRP1, unlike MET, is absent from the apical side & restricted to the basolateral side. In contrast, on ATV/VM-lining cells (F', arrows) both NRP1 & MET are accessible from the bloodstream (H). Vertical gray lines in G & H indicate the position of the apical cell border. Original magnification was 400 \times (E) & 630 \times (F-F''). Representative images are shown. Image collected & cropped by CiteAb from the following publication (<https://www.oncotarget.com/lookup/doi/10.18632/oncotarget.25032>), licensed under a CC-BY license. Not internally tested by Novus Biologicals.



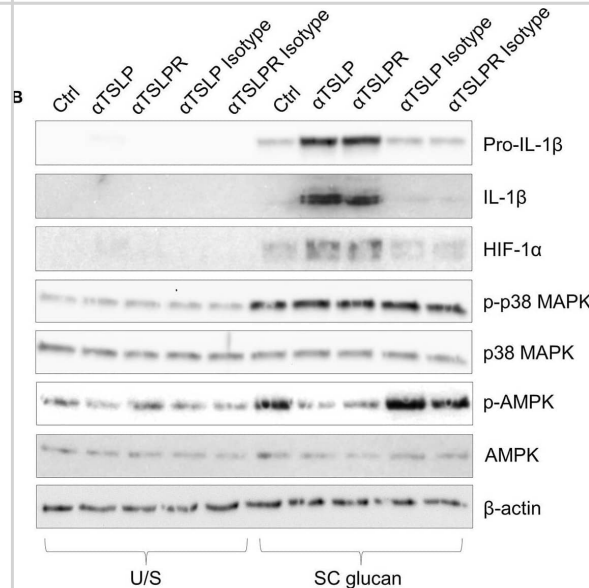
Immunohistochemistry: HIF-1 alpha Antibody [NB100-449] - NRP1 & MET on HT1080 cells are accessible for blood-borne rhodocetin- $\alpha\beta$ (A) expression of NRP1 & MET by HT1080 cells was proven by flow cytometry. Gray, isotype-matched controls. (B) flow cytometry of NRP1-knockout HT1080 cells demonstrating their NRP1-deficiency & unaffected MET expression. (C) treatment with CoCl₂, mimicking a hypoxic tumor micro-environment, induced upregulation of HIF-1 α . (D) NRP1, as a downstream target of HIF-1 α , is upregulated in HT1080 cells but not in NRP1-knockout HT1080 cells. β -actin immunoblots show even loading. (E) increased HIF-1 α (red) levels in hypoxic tumor regions, which also contained partly (arrows) or completely (open arrows) EC-deficient VM vessels. ECs are stained green & nuclei blue. (F) immunostaining of NRP1 (red) & MET (blue) showed that both proteins were present on HT1080 cells & ECs in tumor tissue. Note the continuity between EC-lined vasculature & EC marker-deficient vessels (arrows in F'). F', F'', in oblique view, gating of the green CD31 signal also showed an apical absence of NRP1 on ECs in contrast to MET (open arrows). (G) the fluorescence intensity along a traceroute, averaged over a width of 5 pixels, (rectangle in F) through the endothelium revealed that in ECs NRP1, unlike MET, is absent from the apical side & restricted to the basolateral side. In contrast, on ATV/VM-lining cells (F', arrows) both NRP1 & MET are accessible from the bloodstream (H). Vertical gray lines in G & H indicate the position of the apical cell border. Original magnification was 400 \times (E) & 630 \times (F-F''). Representative images are shown. Image collected & cropped by CiteAb from the following publication (<https://www.oncotarget.com/lookup/doi/10.18632/oncotarget.25032>), licensed under a CC-BY license. Not internally tested by Novus Biologicals.



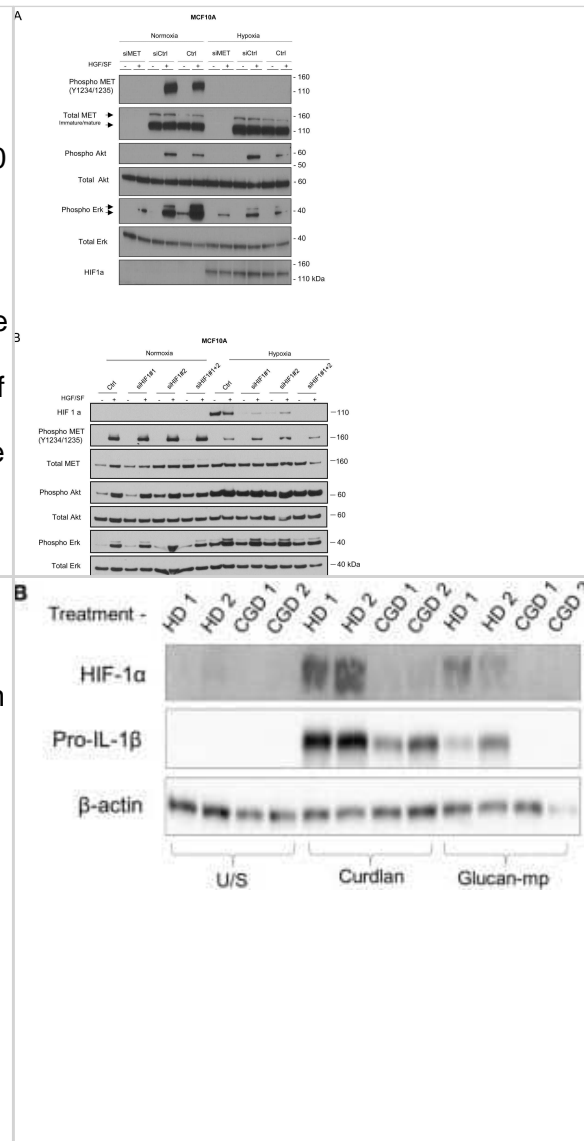
Western Blot: HIF-1 alpha Antibody [NB100-449] - C/EBP δ promotes HIF-1 α expression in macrophages through inhibition of FBXW7 α RT-PCR analysis of FBXW7 isoform expression from different sources as follows. 1, primary peritoneal macrophages (PPMs); 2, RAW 264.7 cells; 3, MMTV-Neu mammary tumour tissue; 4, primary mouse embryo fibroblasts. Numbers indicate the position of size markers in base pairs. (b) RT-qPCR analysis of Fbxw7 transcript levels in PPMs from WT & Cebp δ -/- KO mice, cultured +/- LPS (100 ng/ml, 24 h), compared to WT untreated (n=4, *P<0.05; **P<0.001). (c) Western analysis of nuclear extract (NE) from primary human monocytes nucleofected with siRNA oligos (C, control; D, CEBPD; F, FBXW7) & treated with LPS (100 ng/ml) & 1%O₂ (16 h) as indicated. SE, short exposure; LE, long exposure. (d) RT-qPCR analysis of FBXW7 & CEBPD transcripts in primary human monocytes as in panel (c) (n=3, *P<0.05; **P<0.001). (e) Western analysis of NE from PPMs nucleofected with siRNA oligos & treated with LPS (100 ng/ml) & 1%O₂ for 16 h as indicated. SE, short exposure; LE, long exposure. Where applicable, data are mean \pm S.E.M., evaluated by two-tailed unequal variance t-test. Image collected & cropped by CiteAb from the following publication (<https://pubmed.ncbi.nlm.nih.gov/23575666>), licensed under a CC-BY license. Not internally tested by Novus Biologicals.



Western Blot: HIF-1 alpha Antibody [NB100-449] - Dectin-1-induced TSLP negatively regulates pro-IL-1 β & HIF-1 α . (A) Human mDC were stimulated with SC glucan, CA glucan or heat killed *C. albicans* hyphae with anti-TSLPR antibodies or IgG isotype control for 24 h (n = 6 independent donors, presented as pooled data). Lactate production was measured in cell-culture supernatants using colourmetric L-lactate detection kit. (B) Human mDC were stimulated SC glucan with either anti-TSLP, anti-TSLPR or IgG isotype control antibodies for 8 h (n = 1 representative donor presented, three separate experiments performed). Pro-IL-1 β , IL-1 β , HIF-1 α , phospho-p38 MAPK, p38 MAPK, phospho-AMPK, AMPK & β -actin were measured by immunoblot. (C-G) Densitometry of cumulative data was performed using Image Studio Lite software with pro-IL-1 β , IL-1 β & HIF-1 α normalized to β -actin & phospho-p38 MAPK & phospho-AMPK normalized to total p38 MAPK & AMPK respectively. Data is reported as percentage of maximal signal observed within each donor (n = 3 independent donors, presented as pooled data). Cumulative data displayed as mean +SEM. Statistical analysis calculated using one-way ANOVA with Bonferroni post-tests (**p = 0.001). Image collected & cropped by CiteAb from the following publication (<https://pubmed.ncbi.nlm.nih.gov/31139177>), licensed under a CC-BY license. Not internally tested by Novus Biologicals.



Western Blot: HIF-1 alpha Antibody [NB100-449] - Involvement of MET in Akt & Erk pathway activation under hypoxia MCF10A cells were transfected with a pool of three MET-targeting siRNAs (20 nM) or a control siRNA (siCtrl). A control without siRNA was also included (Ctrl) (A). MCF10A cells were transfected with two HIF1a-targeting siRNAs (20 nM), independently or together, or a control siRNA (siCtrl) (B). The cells were then placed for 1 h under normoxic or hypoxic conditions & treated or not for 10 min with 10 ng/mL HGF/SF. In each experiment, the same amount of protein was analyzed by western blotting with antibodies directed against: phosphorylated residues in the MET kinase domain, the MET kinase domain, phosphorylated Akt, Akt, phosphorylated Erk, Erk2, phosphorylated GAB1, GAB1, or hypoxia marker HIF1a. The positions of prestained molecular weight markers are indicated. Arrows indicate the positions of precursor & mature full-length MET & Erk1/2 proteins. Image collected & cropped by CiteAb from the following publication (<https://pubmed.ncbi.nlm.nih.gov/29930749>), licensed under a CC-BY license. Not internally tested by Novus Biologicals.



Publications

Xing, Y;Wang, MM;Zhang, F;Xin, T;Wang, X;Chen, R;Sui, Z;Dong, Y;Xu, D;Qian, X;Lu, Q;Li, Q;Cai, W;Hu, M;Wang, Y;Cao, JL;Cui, D;Qi, J;Wang, W; Lysosomes finely control macrophage inflammatory function via regulating the release of lysosomal Fe²⁺ through TRPML1 channel Nature communications 2025-01-24 [PMID: 39856099]

Zhang X, Zhao J, Yin X et al. Comprehensive molecular profiling of FH-deficient renal cell carcinoma identifies molecular subtypes and potential therapeutic targets Nature Communications 2025-05-12 [PMID: 40355427]

Boehme J, Datar S, Sun X et al. Mechanotransductive stabilization of HIF-1 α is inhibited by mitochondrial antioxidant therapy in the setting of pulmonary overcirculation. Scientific reports 2025-05-11 [PMID: 40348934]

Vo V, Tran L, Bui T et al. Etoposide-induced protein 2.4 homolog promotes argininosuccinate synthase 1 and cancer cell survival upon arginine deprivation. Cellular & Molecular Biology Letters 2025-04-19 [PMID: 40253325]

Han J, Jeong H, Choi J et al. Bioprinted Patient-Derived Organoid Arrays Capture Intrinsic and Extrinsic Tumor Features for Advanced Personalized Medicine. Advanced science (Weinheim, Baden-Wurtemberg, Germany) 2025-03-28 [PMID: 40151904]

Masi M, Poppi L, Previtali V et al. Investigating synthetic lethality and PARP inhibitor resistance in pancreatic cancer through enantiomer differential activity. Cell Death Discovery 2025-03-16 [PMID: 40091075]

Scantamburlo F, Rubini A, Toffanin M et al. TRAP1 expression elicits pro-tumoral functions in macrophages associated to malignant peripheral nerve sheath tumor cells Journal of Experimental & Clinical Cancer Research : CR 2025-08-28 [PMID: 40877908]

Young H, Lee S, Choi Y et al. Hyperbaric Oxygen Increases Mitochondrial Biogenesis and Function with Oxidative Stress in HL-1 Cardiomyocytes. Journal of applied physiology (Bethesda, Md. : 1985) 2025-05-22 [PMID: 40402925]

Moreno-Loshuertos R, Movilla N, Marco-Brualla J et al. A Mutation in Mouse MT-ATP6 Gene Induces Respiration Defects and Opposed Effects on the Cell Tumorigenic Phenotype International Journal of Molecular Sciences 2023-01-09 [PMID: 36674816] (Western Blot, Human)

Prieto-Fernández E, Egia-Mendikute L, Bosch A et al. Hypoxia Promotes Syndecan-3 Expression in the Tumor Microenvironment Frontiers in Immunology 2020-09-30 [PMID: 33117401] (Western Blot, Human)

Pirkmajer S, Bezjak K, Matkovi? U et al. Ouabain Suppresses IL-6/STAT3 Signaling and Promotes Cytokine Secretion in Cultured Skeletal Muscle Cells Frontiers in Physiology 2020-09-25 [PMID: 33101052] (Western Blot, Human)

Noonan ML, Ni P, Solis E et al. Osteocyte EglN1/Phd2 links oxygen sensing and biomineralization via FGF23 Bone Research 2023-01-18 [PMID: 36650133] (Western Blot, Human)

More publications at <http://www.novusbio.com/NB100-449>



Procedures

Immunohistochemistry Protocols (NB100-449)

IHC - Frozen 7 um mouse frozen sections were used.

Detection system: Vectors Anti-Rabbit Ig ImmPRESS Reagent Kit (cat # MP-7401)

1. Fix in ice cold acetone
2. Block for one hour at room temp. The block is provided by the vector kit; it is 2.5% horse serum.
3. Use NB 100-449 at a 1:100 dilution in PBS and incubate overnight in the fridge.
4. Perform a 15 min peroxidase block and incubated with the ImmPress anti-rabbit for 30 mins at RT.
5. Use DAB to detect staining and counterstained with Vectors Hemotoxylin. PBS washes (3X2 mins) were done in between all steps except in between the block and the primary

IHC-FFPE sections

I. Deparaffinization:

- A. Treat slides with Xylene: 3 changes for 5 minutes each. Drain slides for 10 seconds between changes.
- B. Treat slides with 100% Reagent Alcohol: 3 changes for 5 minutes each. Drain slides for 10 seconds between changes.

II. Quench Endogenous Peroxidase:

To Prepare 200 ml of Quenching Solution:

Add 3 ml of 30% Hydrogen Peroxide to 200 ml of Methanol.

**Use within 4 hours of preparation

- A. Place slides in peroxidase quenching solution: 15-30 minutes.
- B. Place slides in distilled water: 2 changes for 2 minutes each.

III. Retrieve Epitopes:

- A. Preheat Citrate Buffer. Place 200 ml of Citrate Buffer Working Solution into container, cover and place into steamer. Heat to 90-96C.
- B. Place rack of slides into hot Citrate Buffer for 20 minutes. Cover.
- C. Carefully remove container with slides from steamer and cool on bench, uncovered, for 20 minutes.
- D. Slowly add distilled water to further cool for 5 minutes.
- E. Rinse slides with distilled water, 2 changes for 2 minutes each

IV. Immunostaining Procedure:

- A. Remove each slide from rack and circle tissue section with a hydrophobic barrier pen (e.g. Liquid Blocker-Super

Pap Pen).

B. Flood slide with Wash Solution.

Do not allow tissue sections to dry for the rest of the procedure.

C. Drain wash solution and apply 4 drops of Blocking Reagent to each slide and incubate for 15 minutes.

D. Drain Blocking Reagent (do not wash off the Blocking Reagent), apply 200 ul of Primary Antibody solution to each slide, and incubate for 1 hour.

E. Wash slides with Wash Solution: 3 changes for 5 minutes each.

F. Drain wash solution, apply 4 drops of Secondary antibody to each slide and incubate for 1 hour.

G. Wash slides with Wash Solution: 3 changes for 5 minutes each.

H. Drain wash solution, apply 4 drops of DAB Substrate to each slide and develop for 5-10 minutes.

Check development with microscope.

I. Wash slides with Wash Solution: 3 changes for 5 minutes each.

J. Drain wash solution, apply 4 drops of Hematoxylin to each slide and stain for 1-3 minutes. Increase time if darker counterstaining is desired.

K. Wash slides with Wash Solution: 2-3 changes for 2 minutes each.

L. Drain wash solution and apply 4 drops of Bluing Solution to each slide for 1-2 minutes.

M. Rinse slides in distilled water.

N. Soak slides in 70% reagent alcohol: 3 minutes with intermittent agitation.

O. Soak slides in 95% reagent alcohol: 2 changes for 3 minutes each with intermittent agitation.

P. Soak slides in 100% reagent alcohol: 3 changes for 3 minutes each with intermittent agitation. Drain slides for 10 seconds between each change.

Q. Soak slides in Xylene: 3 changes for 3 minutes each with intermittent agitation. Drain slides for 10 seconds between each change.

R. Apply 2-3 drops of non-aqueous mounting media to each slide and mount coverslip.

S. Lay slides on a flat surface to dry prior to viewing under microscope.

NOTES:

-Use treated slides (e.g. HistoBond) to assure adherence of FFPE sections to slide.

-Prior to Deparaffinization, heat slides overnight in a 60C oven.

-All steps in which Xylene is used should be performed in a fume hood.

-For Epitope Retrieval, a microwave or pressure cooker may be substituted for the steamer method. Adjust times as necessary depending on conditions.

-For the initial IHC run with a new primary antibody, test tissues with and without Epitope Retrieval. In some instances, Epitope Retrieval may not be necessary.

-200 ul is the recommended maximum volume to apply to a slide for full coverage. Using more than 200 ul may allow solutions to wick off the slide and create drying artifacts, for small tissue sections less than 200 ul may be used.

-5 minutes of development with DAB Substrate should be sufficient. Do not develop for more than 10 minutes. If 5 minutes of development causes background staining, further dilution of the primary antibody may be necessary.

-Hematoxylin should produce a light nuclear counterstain so as not to obscure the DAB staining. Counterstain for 1-1.5 minutes for nuclear antigens. Counterstain for 2-3 minutes for cytoplasmic and membranous antigens. If darker counterstaining is desired increase time (up to 10 minutes)





Novus Biologicals USA

10730 E. Briarwood Avenue
Centennial, CO 80112
USA
Phone: 303.730.1950
Toll Free: 1.888.506.6887
Fax: 303.730.1966
nb-customerservice@bio-techne.com

Bio-Techne Canada

21 Canmotor Ave
Toronto, ON M8Z 4E6
Canada
Phone: 905.827.6400
Toll Free: 855.668.8722
Fax: 905.827.6402
canada.inquires@bio-techne.com

Bio-Techne Ltd

19 Barton Lane
Abingdon Science Park
Abingdon, OX14 3NB, United Kingdom
Phone: (44) (0) 1235 529449
Free Phone: 0800 37 34 15
Fax: (44) (0) 1235 533420
info.EMEA@bio-techne.com

General Contact Information

www.novusbio.com
Technical Support: nb-technical@bio-techne.com
Orders: nb-customerservice@bio-techne.com
General: novus@novusbio.com

Products Related to NB100-449

NB800-PC26	COS-7 Nuclear Hypoxic Induced Cell Lysate
NBP2-33376H	Blue Marker Antibody (6F4-F6) [HRP]
HAF008	Goat anti-Rabbit IgG Secondary Antibody [HRP]
NB7160	Goat anti-Rabbit IgG (H+L) Secondary Antibody [HRP]
NBP2-24891	Rabbit IgG Isotype Control

Limitations

This product is for research use only and is not approved for use in humans or in clinical diagnosis. Primary Antibodies are guaranteed for 1 year from date of receipt.

For more information on our 100% guarantee, please visit www.novusbio.com/guarantee

Earn gift cards/discounts by submitting a review: www.novusbio.com/reviews/submit/NB100-449

Earn gift cards/discounts by submitting a publication using this product:
www.novusbio.com/publications

